

70-243^{Q&As}

Administering and Deploying System Center 2012 Configuration Manager

Pass Microsoft 70-243 Exam with 100% Guarantee

Free Download Real Questions & Answers **PDF** and **VCE** file from:

<https://www.pass2lead.com/70-243.html>

100% Passing Guarantee
100% Money Back Assurance

Following Questions and Answers are all new published by Microsoft Official Exam Center

- ⚙️ **Instant Download** After Purchase
- ⚙️ **100% Money Back** Guarantee
- ⚙️ **365 Days** Free Update
- ⚙️ **800,000+** Satisfied Customers



QUESTION 1

HOTSPOT

You plan to deploy a System Center 2012 R2 Configuration Manager Service Pack 1 (SP1) stand-alone primary site. The site will use a Microsoft SQL Server 2014 database server.

You need to recommend a high-availability solution to ensure that the site is available if SQL Server or management point fails.

What should you recommend? To answer, select the appropriate options in the answer area.

Hot Area:

Answer Area

SQL Server 2014:

	▼
A single instance on a failover cluster	
Two instances that are replicated by using Always On	
Two instances that are replicated by using database mirroring	
Multiple instances that are replicated by using SQL Server replication	

Management point:

	▼
Two management points	
One management point that uses a database replica	
A single instance of the Management Point role on a failover cluster	
Two Configuration Manager sites that each have one management point	

Correct Answer:

Answer Area

SQL Server 2014:

	▼
A single instance on a failover cluster	
Two instances that are replicated by using Always On	
Two instances that are replicated by using database mirroring	
Multiple instances that are replicated by using SQL Server replication	

Management point:

	▼
Two management points	
One management point that uses a database replica	
A single instance of the Management Point role on a failover cluster	
Two Configuration Manager sites that each have one management point	

Answer Area

SQL Server 2014:

	▼
A single instance on a failover cluster	
Two instances that are replicated by using Always On	
Two instances that are replicated by using database mirroring	
Multiple instances that are replicated by using SQL Server replication	

Management point:

	▼
Two management points	
One management point that uses a database replica	
A single instance of the Management Point role on a failover cluster	
Two Configuration Manager sites that each have one management point	

Box 1: As part of the SQL Server Always On offering, Always On Failover Cluster Instances leverages Windows Server Failover Clustering (WSFC) functionality to provide local high availability through redundancy at the server-instance level

—a failover cluster instance (FCI).

When there is hardware or software failure of a server, the applications or clients connecting to the server will experience downtime. When a SQL Server instance is configured to be an FCI (instead of a standalone instance), the high

availability of that SQL Server instance is protected by the presence of redundant nodes in the FCI.

Box 2: When you install multiple instances of critical site system roles such as the management point and distribution point, you provide redundant points of contact for clients in the event that a specific site system server is off-line.

References:

<https://msdn.microsoft.com/en-us/library/ms189134.aspx>

<https://technet.microsoft.com/en-us/library/hh846246.aspx>

QUESTION 2

HOTSPOT

You have an Active Directory domain named contoso.com. The domain contains three servers named Server1, Server2, and Server3 that run Windows Server 2012 R2. Server1 is a System Center 2012 R2 Configuration Manager Service

Pack 1 (SP1) primary site server.

You plan to install a primary site on Server2.

You need to ensure that Configuration Manager is managed centrally. The solution must minimize administrative effort.

What should you do before you deploy the primary site to Server2? To answer, select the appropriate options in the answer area.

Hot Area:

Answer Area

Component to install on Server3:

	▼
The Central Administration site	
The primary site	
The secondary site	

Component to remove from Server1:

	▼
Configuration Manager 2012 R2 Service Pack 1 (SP1)	
A distribution point	
An Endpoint Protection point	
A management point	

Correct Answer:

Answer Area

Component to install on Server3:

	▼
The Central Administration site	
The primary site	
The secondary site	

Component to remove from Server1:

	▼
Configuration Manager 2012 R2 Service Pack 1 (SP1)	
A distribution point	
An Endpoint Protection point	
A management point	

QUESTION 3

HOTSPOT

Your network contains a single Active Directory named contoso.com. A System Center 2012 R2 Configuration Manager Service Pack 1 (SP1) primary site named S01 is deployed to contoso.com. The Configuration Manager deployment includes the servers configured as shown in the following table.

Server name	Site system role
Server1	Site server
Server2	Management point
Server3	Distribution point
Server4	Enrollment point
Server5	Software update point

The distribution point is configured to require HTTPS for client communications.

You have a domain computer named Computer1 that runs the 64-bit version of Windows 8.1.

You need to install the Configuration Manager client on Computer1 manually.

Which network location should you use to start the installation? To answer, select the appropriate options in the answer area.

Hot Area:

Answer Area

\\Server1.contoso.com\sms_s01\client\	Ccmsetup.cab
\\Server3.contoso.com\sms_s01\client\x64\	Ccmsetup.exe
ftp://server1.contoso.com/sms_s01/client/	Client.msi
ftp://server3.contoso.com/sms_s01/client/x64/	ScepInstall.exe
http://server3.contoso.com/sms_s01/client/	
http://server3.contoso.com/sms_s01/client/x64/	
https://server1.contoso.com/sms_s01/client/	
https://server1.contoso.com/sms_s01/client/x64/	

Correct Answer:

Answer Area

\\Server1.contoso.com\sms_s01\client\	Ccmsetup.cab
\\Server3.contoso.com\sms_s01\client\x64\	Ccmsetup.exe
ftp://server1.contoso.com/sms_s01/client/	Client.msi
ftp://server3.contoso.com/sms_s01/client/x64/	ScepInstall.exe
http://server3.contoso.com/sms_s01/client/	
http://server3.contoso.com/sms_s01/client/x64/	
https://server1.contoso.com/sms_s01/client/	
https://server1.contoso.com/sms_s01/client/x64/	

You can manually install the System Center 2012 Configuration Manager client software on computers in your enterprise by using the CCMSetup.exe program. This program and its supporting files can be found in the Client folder of the System Center 2012 Configuration Manager installation folder on the site server and on management points in your site. This folder is shared to the network as \SMS_Client.

QUESTION 4

DRAG DROP

Your network contains a System Center 2012 Configuration Manager environment. Three users named User1, User2, and User3 will perform the following tasks:

- User1 will review software metering data and inventory reports.
- User2 will deploy Applications and create alerts.
- User3 will create configuration items.

You need to identify which security role must be assigned to which user.

What should you identify?

To answer, drag the appropriate security role to the correct user in the answer area. Each security role may be used once, more than once, or not at all. Additionally, you may need to drag the split bar between panes or scroll to view content.

Select and Place:

Security Role	Answer Area
Application Administrator	User1 Security role
Application Deployment Manager	User2 Security role
Asset Manager	User3 Security role

Correct Answer:

Security Role	Answer Area
	User1 Asset Manager
	User2 Application Deployment Manager
	User3 Application Administrator

*

Asset Manager - A security role that grants permissions to administrative users so that they can manage the Asset Intelligence synchronization point, Asset Intelligence reporting classes, software inventory, hardware inventory, and metering rules.

*

Application Deployment Manager - A security role that grants permissions to administrative users so that they can deploy and monitor applications.

*

Compliance SettingsManager - A security role that grants permissions to administrative users so that they can define and monitor compliance settings.

QUESTION 5

HOTSPOT

Your network contains a System Center 2012 Configuration Manager environment.

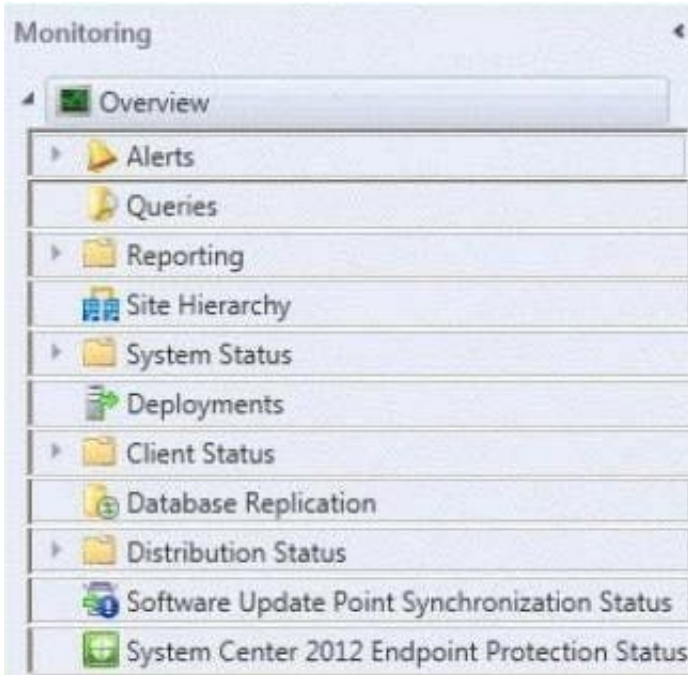
You deploy an application to 1,000 client computers.

You need to identify which client computers are in the process of installing the application.

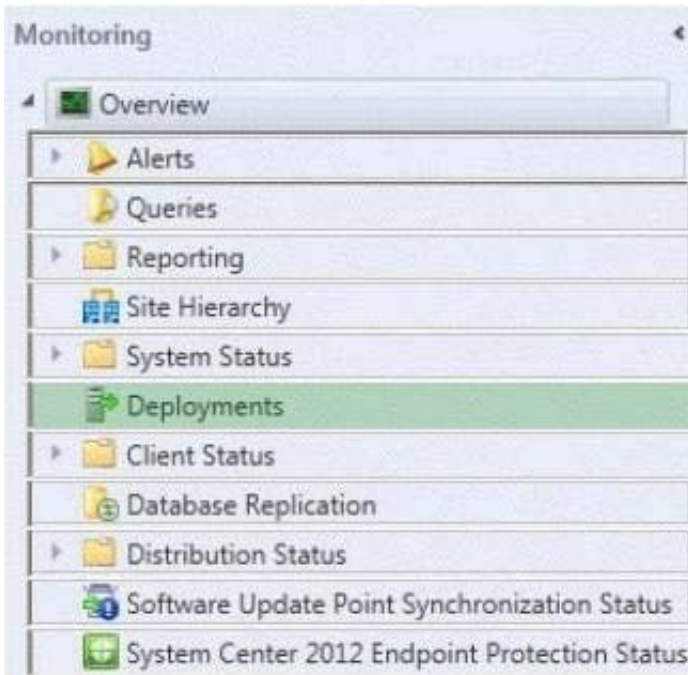
Which node should you select in the Configuration Manager console?

To answer, select the appropriate node in the answer area.

Hot Area:



Correct Answer:



To monitor the state of an application in the Configuration Manager console

1.
In the Configuration Manager console, click Monitoring.
- 2.

In the Monitoring workspace, click Deployments.

[Latest 70-243 Dumps](#)

[70-243 Practice Test](#)

[70-243 Exam Questions](#)