

70-243^{Q&As}

Administering and Deploying System Center 2012 Configuration Manager

Pass Microsoft 70-243 Exam with 100% Guarantee

Free Download Real Questions & Answers **PDF** and **VCE** file from:

<https://www.pass2lead.com/70-243.html>

100% Passing Guarantee
100% Money Back Assurance

Following Questions and Answers are all new published by Microsoft Official Exam Center

- ⚙️ **Instant Download** After Purchase
- ⚙️ **100% Money Back** Guarantee
- ⚙️ **365 Days** Free Update
- ⚙️ **800,000+** Satisfied Customers



QUESTION 1

HOTSPOT

You have a System Center 2012 R2 Configuration Manager Service Pack 1 (SP1) primary site named S01 that includes the servers configured as shown in the following table.

Server name	Configuration
Server1	Configuration Manager
Server2	Microsoft SQL Server 2012 Service Pack 2 (SP2)

You perform regular site backups by using Configuration Manager.

You create a test environment that is isolated completely from the production network. The Active Directory configuration in the test environment and the production environment are identical.

A user named User1 plans to test disaster recovery procedures by using servers in the test environment. The servers are configured as shown in the following table.

Server name	Configuration
ServerA	Member server
ServerB	SQL Server 2012 SP2

User1 is a member of the Administrators group on ServerA and ServerB.

You need to enable User1 to reinstall Configuration Manager manually on ServerA and to use the Recovery Wizard to restore the database on ServerB.

What should you do? To answer, select the appropriate options in the answer area.

Hot Area:

Answer Area

Before User1 reinstalls Configuration Manager, you must:

- Rename ServerA
- Rename ServerB
- Grant ServerA Full Control permissions to the System container
- Grant User1 Full Control permissions to the ServerA computer object

Before you can restore the site database, you must:

- Rename ServerB
- Create an empty database named CM_S01
- Run the Restore-DscConfiguration cmdlet
- Delete the Configuration Manager database

Correct Answer:

Answer Area

Before User1 reinstalls Configuration Manager, you must:

- Rename ServerA
- Rename ServerB
- Grant ServerA Full Control permissions to the System container
- Grant User1 Full Control permissions to the ServerA computer object

Before you can restore the site database, you must:

- Rename ServerB
- Create an empty database named CM_S01
- Run the Restore-DscConfiguration cmdlet
- Delete the Configuration Manager database

* When we have created the system management container, we must grant the site server's computer account the permissions that are required to publish site information to the container. The primary site server computer account must be granted Full Control permissions to the System Management container and all its child objects.

QUESTION 2

DRAG DROP

Your network contains a System Center 2012 Configuration Manager environment.

You create a collection named All Marketing Users.

You need to inventory the desktop settings of the All Marketing Users collection.

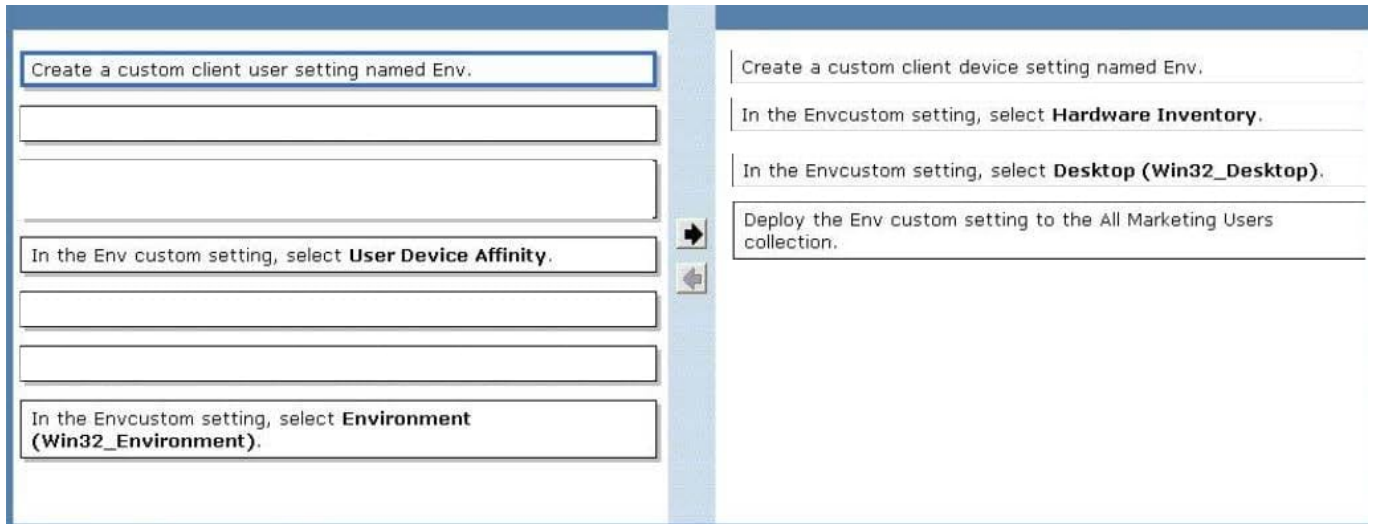
What should you do?

To answer, move the four appropriate actions from the list of actions to the answer area and arrange them in the correct order.

Select and Place:

- Create a custom client user setting named Env.
- Create a custom client device setting named Env.
- Deploy the Env custom setting to the All Marketing Users collection.
- In the Env custom setting, select **User Device Affinity**.
- In the Env custom setting, select **Hardware Inventory**.
- In the Env custom setting, select **Desktop (Win32_Desktop)**.
- In the Env custom setting, select **Environment (Win32_Environment)**.

Correct Answer:



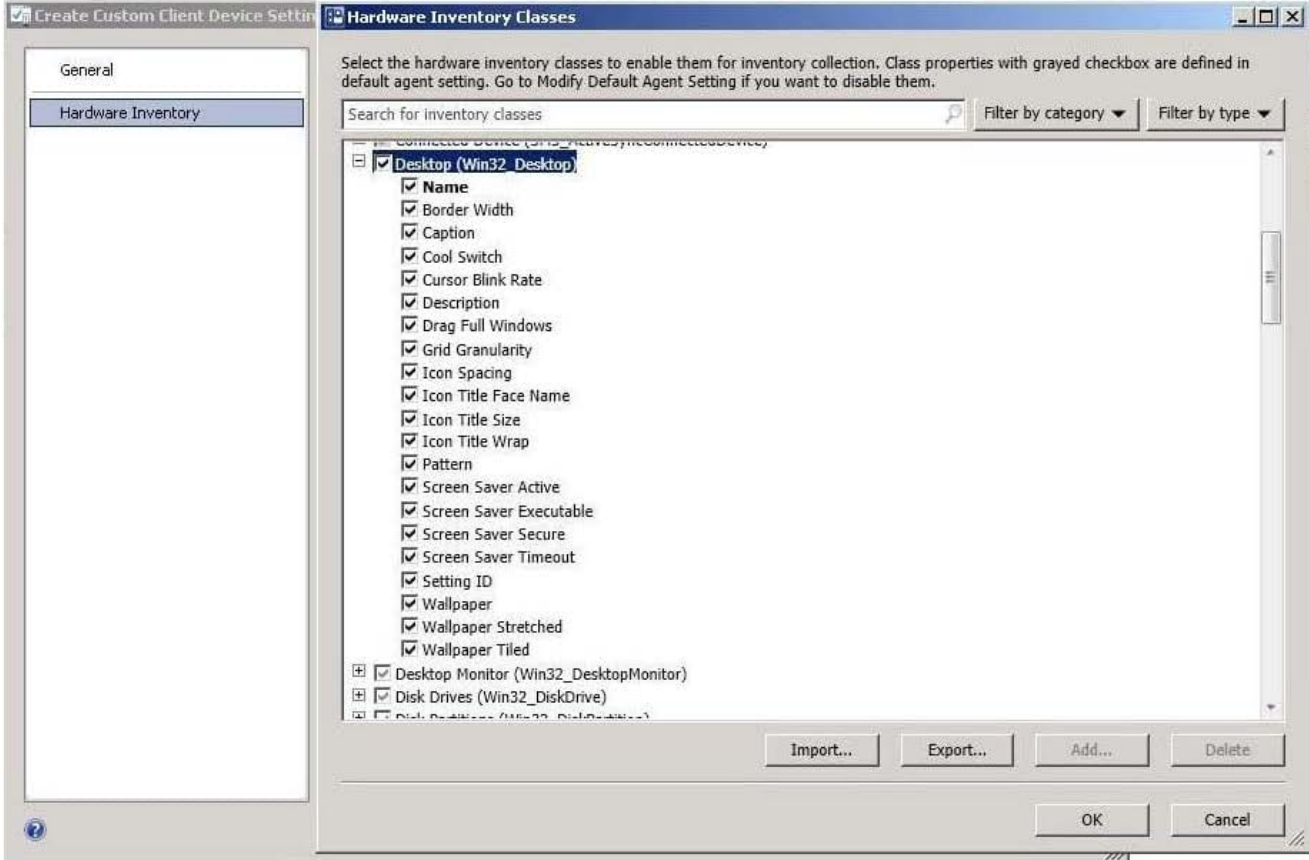
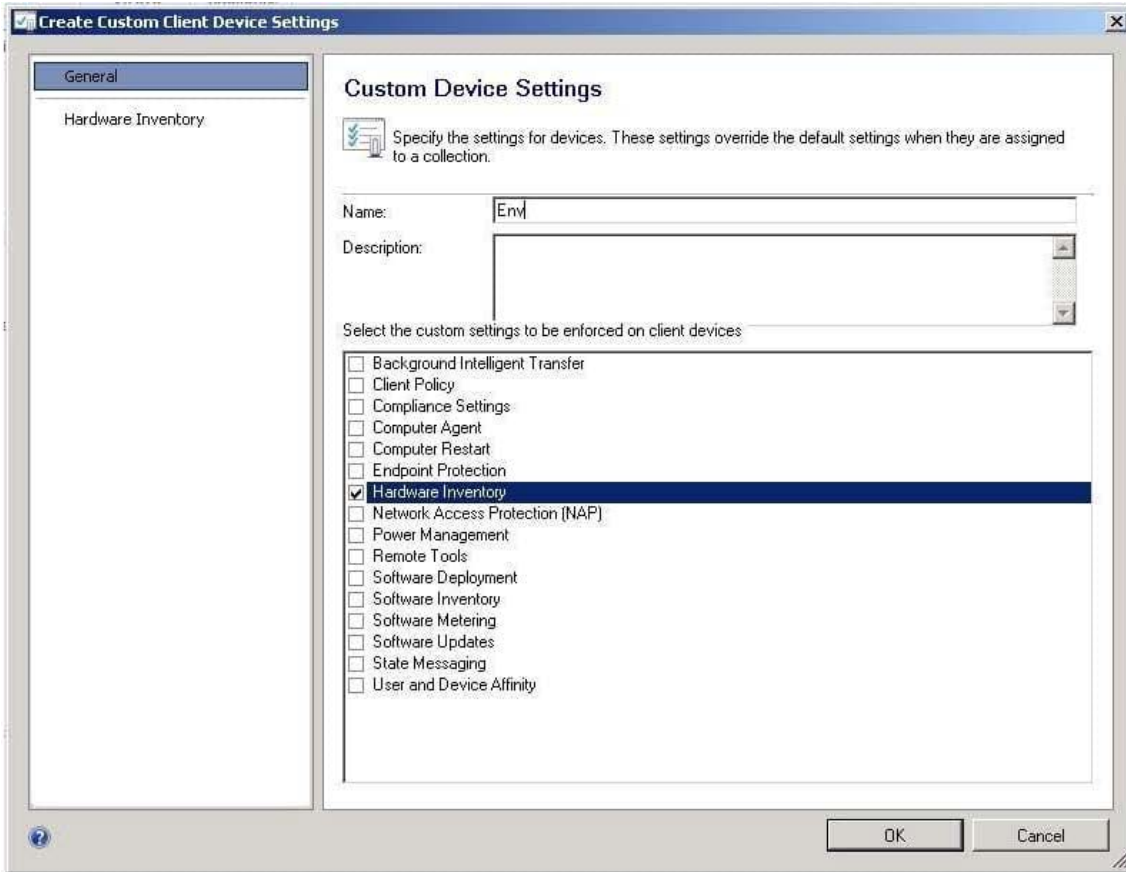
* Win32_Environmentclass (Windows)

The Win32_Environment WMI class represents an environment or system environmentsetting on a Windows computer system. Querying this class returns environment variables found in:

HKEY_LOCAL_MACHINE\System\CurrentControlSet\Control\Sessionmanager\Environment

And HKEY_USERS\Environment

Since we need to inventory WMI information,that means we need Hardware Inventory and you can only do that with a Custom Client Device Setting:



QUESTION 10
DRAG DROP

QUESTION 3

DRAG DROP

Your network contains a System Center 2012 R2 Configuration Manager Service Pack 1 (SP1) environment.

Your company has a security policy that contains mandatory registry settings for all servers.

You have a collection named Servers that contains all of the servers.

You need to identify which servers do not comply with the security policy.

Which four actions should you perform in sequence? To answer, move the appropriate actions from the list of actions to the answer area and arrange them in the correct order.

Select and Place:

The screenshot shows a drag-and-drop interface. On the left, there is a list of six actions in a box:

- Create a new configuration item.
- Create a new configuration baseline.
- Run the Microsoft Baseline Security Analyzer (MBSA).
- Enable Software Inventory for the Servers collection.
- Add the configuration item to the configuration baseline.
- Deploy the configuration baseline to the Servers collection.

On the right, there is an empty answer area. A vertical bar with right and left arrow buttons is positioned between the list and the answer area.

Correct Answer:

The screenshot shows the same drag-and-drop interface as above, but with the correct sequence of four actions placed in the answer area on the right:

- Create a new configuration item.
- Create a new configuration baseline.
- Add the configuration item to the configuration baseline.
- Deploy the configuration baseline to the Servers collection.

The remaining two actions from the original list are still in the source box on the left.

QUESTION 4

HOTSPOT

You have a System Center 2012 R2 Configuration Manager Service Pack 1 (SP1).

You plan to create a device collection named Collection1.

You need to build the membership rule for Collection1. Members of Collection1 must have names that start with the word "Computer", followed by exactly one character.

How should you complete the WQL statement? To answer, select the appropriate options in the answer area.

Hot Area:

Answer Area

Select

```
SMS_R_SYSTEM.ResourceID, SMS_R_SYSTEM.ResourceType, SMS_R_SYSTEM.Name,  
SMS_R_SYSTEM.SMSUniqueIdentifier, SMS_R_SYSTEM.ResourceDomainORWorkgroup,  
SMS_R_SYSTEM.Client from SMS_R_System
```

Where

<input type="text"/>	<input type="text"/>	<input type="text"/>
SMS_G_System_DESKTOP.Name	=	"Computer%"
SMS_R_System.Name	is equal to	"Computer*"
	is like	"Computer?"
		"Computer_"

Correct Answer:

Answer Area

Select

```
SMS_R_SYSTEM.ResourceID, SMS_R_SYSTEM.ResourceType, SMS_R_SYSTEM.Name,  
SMS_R_SYSTEM.SMSUniqueIdentifier, SMS_R_SYSTEM.ResourceDomainORWorkgroup,  
SMS_R_SYSTEM.Client from SMS_R_System
```

Where

<input type="text"/>	<input type="text"/>	<input type="text"/>
SMS_G_System_DESKTOP.Name	=	"Computer%"
SMS_R_System.Name	is equal to	"Computer*"
	is like	"Computer?"
		"Computer_"

Box 1: SMS_R_System.Name

The SMS_R_System Windows Management Instrumentation (WMI) class is an SMS Provider server class, in Configuration Manager, that is generated dynamically at SMS Provider run time and contains discovery data for all discovered system resources.

Box 2: For relational operators that perform LIKE comparisons ("is like" or "is not like"), you can use wildcard characters within the string.

Box 3: Computer_

_ (underscore character)

Any one character.

QUESTION 5

HOTSPOT

Your network contains a System Center 2012 Configuration Manager environment.

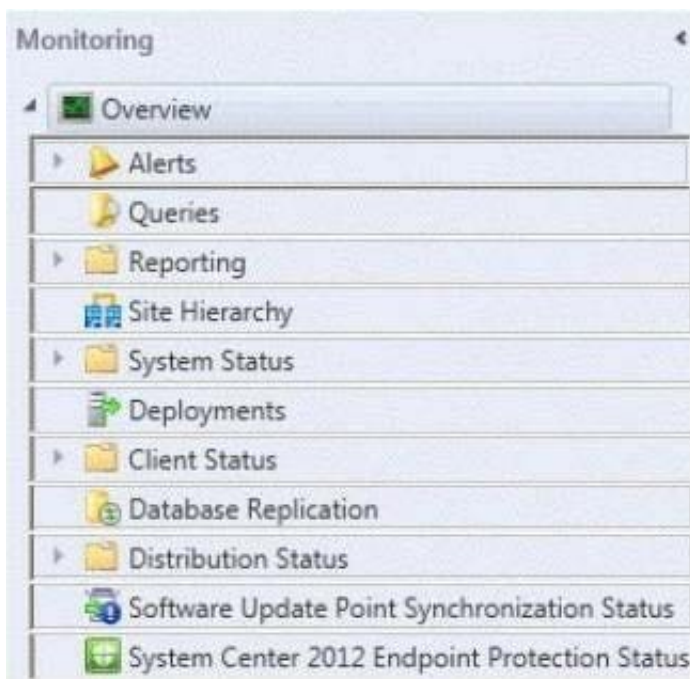
You deploy an application to 1,000 client computers.

You need to identify which client computers are in the process of installing the application.

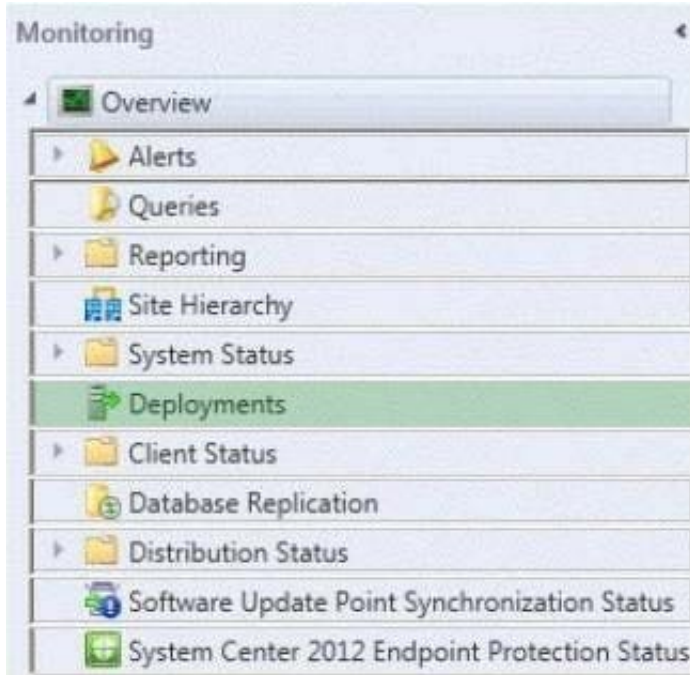
Which node should you select in the Configuration Manager console?

To answer, select the appropriate node in the answer area.

Hot Area:



Correct Answer:



To monitor the state of an application in the Configuration Manager console

1.

In the Configuration Manager console, click Monitoring.

2.

In the Monitoring workspace, click Deployments.

[70-243 PDF Dumps](#)

[70-243 Exam Questions](#)

[70-243 Braindumps](#)