



70-246^{Q&As}

Private Cloud Monitoring and Operations with System Center

Pass Microsoft 70-246 Exam with 100% Guarantee

Free Download Real Questions & Answers **PDF** and **VCE** file from:

<https://www.pass4lead.com/70-246.html>

100% Passing Guarantee
100% Money Back Assurance

Following Questions and Answers are all new published by Microsoft
Official Exam Center

-  **Instant Download** After Purchase
-  **100% Money Back** Guarantee
-  **365 Days** Free Update
-  **800,000+** Satisfied Customers





QUESTION 1

You need to implement the planned reporting changes after the Reporting server in the London office is deployed.

What should you do?

- A. From the Operations Manager console, configure the Security settings.
- B. From the Operations Manager Shell, run the Enable-SCOMOperationalDataReportingcmdlet.
- C. From Microsoft SQL Server Reporting Services (SSRS), upload a report model (.smdl) file and select a data source.
- D. From the Operations Manager console, configure the Reporting settings.

Correct Answer: D

QUESTION 2

You need to recommend changes to the System Center 2012 infrastructure to meet the technical requirements for bare metal recoveries. What should you include in the recommendation? (To answer, select the appropriate actions in the answer area.)

From DPM:

From the Hyper-V hosts:

Hot Area:

From DPM:

Install the DPM agent.	<input type="checkbox"/>
Modify the protection groups.	<input type="checkbox"/>
Modify the end-user recovery options.	<input type="checkbox"/>

From the Hyper-V hosts:

Reinstall the DPM agent.	<input type="checkbox"/>
Install the Enhanced Storage feature.	<input type="checkbox"/>
Install the Windows Server Backup feature.	<input type="checkbox"/>

Correct Answer:



QUESTION 3

Your company has a private cloud that is managed by using a System Center 2012 Operations Manager infrastructure.

The network contains several routers and switches.

You open the Network Devices view and discover that a switch is in a critical state.

You need to identify the availability of the switch during the past seven days. The solution must also ensure that you can review which servers are connected to the switch.

What should you use?

- A. The Network Node Dashboard
- B. A diagram view
- C. The Network Vicinity Dashboard
- D. A state view

Correct Answer: A

<http://www.techrepublic.com/blog/networking/using-the-network-dashboard-views-in-scom-2012/5226> Network Node Dashboard View A node is any device connected to a network. Switches and routers are among the most common kinds of nodes you will discover. The node dashboard provides details on the health of a particular device. The upper portion of the node dashboard consists of the network vicinity view for

that node, as well as "speedometer" gauges for node availability today, yesterday, in the last week, and in the last month.

(Periods of time that were not monitored are counted as "available" in the availability statistics, so newly discovered devices will not appear to have had outages in the gauges.) The lower portion of the node dashboard includes a list of all interfaces on the node that are being monitored.

From this view, you can manually override the automatic selections of which interfaces are monitored by SCOM. Also, by right-clicking on specific interfaces, you can pivot to performance or reporting views that drill down into the near term or long term history of an interface. In Figure B, the Interface Packet Analysis report for "PORT 4 on "switch1 during the previous week appears in a second window.



The screenshot displays the 'Health of Interfaces on this Node' table and the 'Interface Packet Analysis' report. The table lists various interfaces with their states and traffic statistics. The 'Interface Packet Analysis' report shows a line graph for 'PORT-switch1' with a y-axis from 0 to 250 and an x-axis for time. A context menu is open over the 'PORT-4' row, with 'Report Tasks' selected, and a sub-menu is visible showing 'Interface Packet Analysis' as the chosen option.

Interface State	Interface Name	Sent (Bits/sec)	Received (Bits/sec)
✓	PORT-18	21017.5	100144.2
✓	PORT-23	3907.8	278.8
✓	PORT-3	64109.2	117118.8
✓	PORT-14	3696.9	55.8
✓	PORT-16	117710.6	87715.1
✓	PORT-4	1380914.1	954528.8
✓	PORT-17	46863.7	579074.8
○	PORT-12	-	-
○	PORT-10	-	-
○	PORT-24	-	-
○	PORT-13	-	-
○	PORT-7	-	-
○	PORT-21	-	-
○	PORT-6	-	-
○	PORT-22	-	-
○	IF-99	-	-
○	PORT-11	-	-

QUESTION 4

Your company has a datacenter in Los Angeles.

The datacenter contains a private cloud that is managed by a System Center 2012 Virtual Machine Manager (VMM) infrastructure.

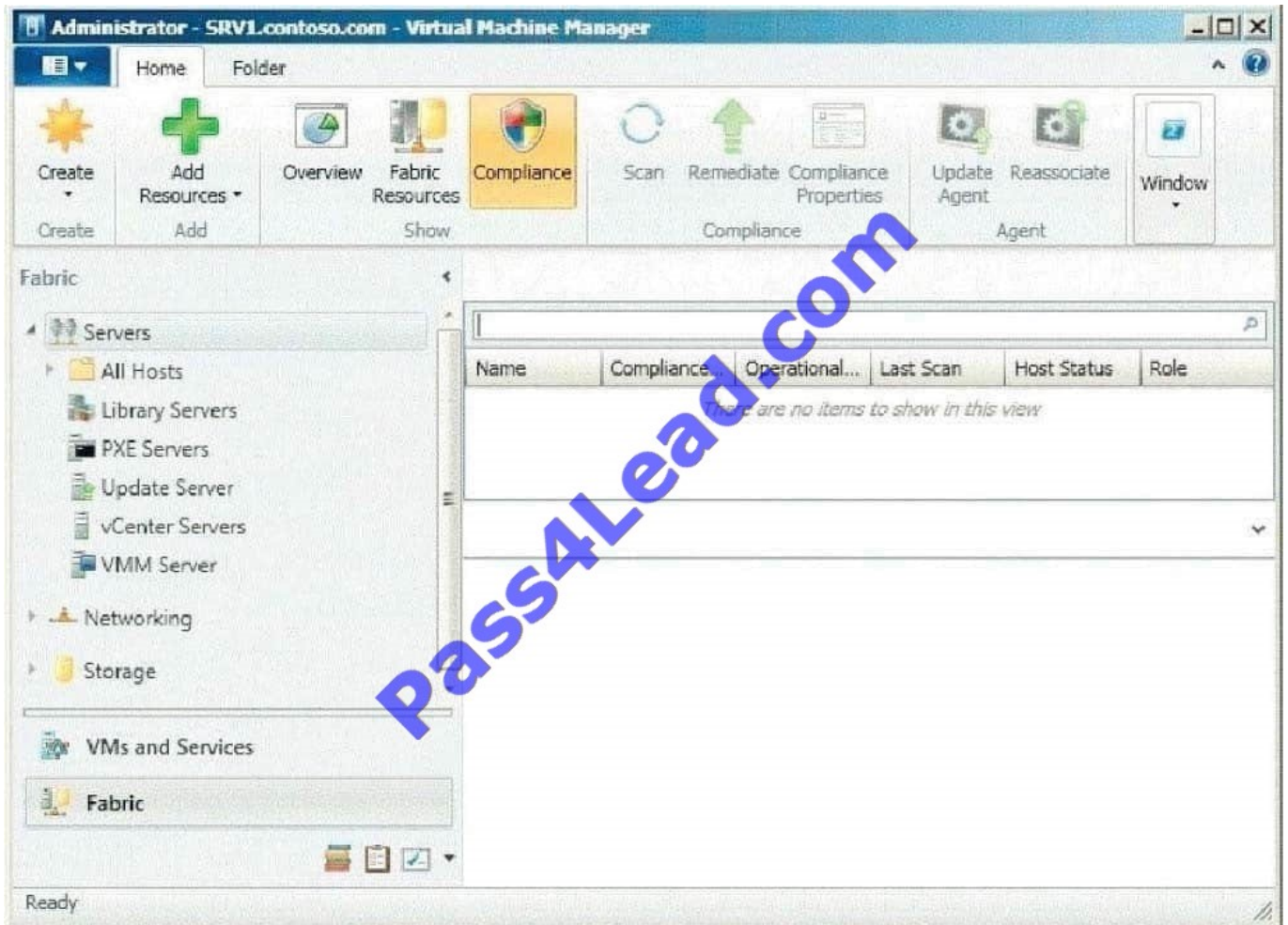
The infrastructure contains two management servers and 10 Hyper-V hosts.

You configure VMM to use an update server and to synchronize the updates by using a windows Server

Update Services (WSUS) server named WSUS1.

You attempt to verify compliance with the Sample Baseline for Security Updates.

You view the console as shown in the exhibit. (Click the Exhibit button.)



You need to ensure that you can verify compliance for all of the Hyper-V hosts. What should you modify?

- A. the update classifications of the update server
- B. the Assignment Scope of the baseline
- C. the default configuration provider
- D. the Network settings of the All Hosts host group

Correct Answer: B

In the VMM console, open the Fabric workspace.

On the Home tab, in the Add group, click Add Resources, and then click Update Server. The Add Windows Server Update Services Server dialog box opens.

In Computer name, enter the fully qualified domain name (FQDN) of the WSUS server (for example, VMMServer01.contoso.com). Specify which TCP/IP port that the WSUS website listens on for connections (for example, port 8530).

Enter credentials for connecting to the WSUS server. The account must have administrator rights on the WSUS server. If necessary, select the Use Secure Socket Layer (SSL) to communicate with the WSUS server and client\\'s check box.



Click Add.

The WSUS server will be added to VMM, followed by initial synchronization of the updates catalog.

Depending on how many update classifications and products you chose when you installed the WSUS server, this operation can take a long time, depending on such factors as network traffic and the load on the WSUS server.

To find out the status of the operation, monitor the status of the Add Update Server and Synchronize Update Server jobs in the Jobs window or in the Jobs workspace.

Note

After you enable update management in VMM, you should manage the WSUS server only through VMM, unless you are using a WSUS server in a Configuration Manager environment. To verify that the WSUS server was added to VMM

successfully:

In the Fabric workspace, on the Fabric pane, expand Servers, and click Update Server.

The results pane should display the WSUS server.

In the Library workspace, on the Library pane, expand Update Catalog and Baselines, and then click Update Catalog.

The results pane should display the updates that were downloaded during WSUS synchronization.

QUESTION 5

You need to recommend a solution to resolve the monitoring issue for the Hyper-V hosts.

Which performance object should you recommend?

- A. Hyper-V Hypervisor Root Virtual Processor
- B. Processor
- C. Hyper-V Hypervisor Virtual Processor
- D. Hyper-V Hypervisor Logical Processor

Correct Answer: D

[70-246 VCE Dumps](#)

[70-246 Practice Test](#)

[70-246 Exam Questions](#)



To Read the [Whole Q&As](#), please purchase the [Complete Version](#) from [Our website](#).

Try our product !

100% Guaranteed Success

100% Money Back Guarantee

365 Days Free Update

Instant Download After Purchase

24x7 Customer Support

Average 99.9% Success Rate

More than 800,000 Satisfied Customers Worldwide

Multi-Platform capabilities - [Windows](#), [Mac](#), [Android](#), [iPhone](#), [iPod](#), [iPad](#), [Kindle](#)

We provide exam PDF and VCE of Cisco, Microsoft, IBM, CompTIA, Oracle and other IT Certifications. You can view Vendor list of All Certification Exams offered:

<https://www.pass4lead.com/allproducts>

Need Help

Please provide as much detail as possible so we can best assist you.

To update a previously submitted ticket:



 <p>One Year Free Update Free update is available within One Year after your purchase. After One Year, you will get 50% discounts for updating. And we are proud to boast a 24/7 efficient Customer Support system via Email.</p>	 <p>Money Back Guarantee To ensure that you are spending on quality products, we provide 100% money back guarantee for 30 days from the date of purchase.</p>	 <p>Security & Privacy We respect customer privacy. We use McAfee's security service to provide you with utmost security for your personal information & peace of mind.</p>
---	---	--

Any charges made through this site will appear as Global Simulators Limited.

All trademarks are the property of their respective owners.

Copyright © pass4lead, All Rights Reserved.