



70-410^{Q&As}

Installing and Configuring Windows Server 2012

Pass Microsoft 70-410 Exam with 100% Guarantee

Free Download Real Questions & Answers **PDF** and **VCE** file from:

<https://www.pass4lead.com/70-410.html>

100% Passing Guarantee
100% Money Back Assurance

Following Questions and Answers are all new published by Microsoft
Official Exam Center

-  **Instant Download** After Purchase
-  **100% Money Back** Guarantee
-  **365 Days** Free Update
-  **800,000+** Satisfied Customers





QUESTION 1

Your network contains several servers that run Windows Server 2012 R2 and client computers that run Windows 8.1.

You download several signed Windows PowerShell scripts from the Internet.

You need to run the PowerShell scripts on all of the servers and all of the client computers.

What should you modify first?

- A. The environment variables on all of the servers
- B. The execution policy on all of the servers
- C. The execution policy on all of the client computers
- D. The environment variables on all client computers

Correct Answer: C

The default execution policy of Windows Server 2012 is RemoteSigned meaning that as long as a valid signature is used on the scripts, they will run. However, the client computers have a default execution policy of restricted meaning that no scripts will run in PowerShell whatsoever, so this would have to be changed before the scripts could be executed on the client computers.

QUESTION 2

Your network contains an Active Directory domain named contoso.com. All client computer accounts are in an organizational unit (OU) named AllComputers. Client computers run either Windows 7 or Windows 8.1.

You create a Group Policy object (GPO) named GP1.

You link GP1 to the AllComputers OU.

You need to ensure that GP1 applies only to computers that have more than 8 GB of memory.

What should you configure?

- A. The Security settings of GP1
- B. The Block Inheritance option for AllComputers
- C. The Security settings of AllComputers
- D. The WMI filter for GP1

Correct Answer: D

Windows Management Instrumentation (WMI) filters allow you to dynamically determine the scope of Group Policy objects (GPOs) based on attributes of the target computer. When a GPO that is linked to a WMI filter is applied on the target computer, the filter is evaluated on the target computer. If the WMI filter evaluates to false, the GPO is not applied (except if the client computer is running Windows Server, in which case the filter is ignored and the GPO is always applied). If the WMI filter evaluates to true, the GPO is applied. WMI filters, like GPOs, are stored on a per-domain



basis. A WMI filter and the GPO it is linked to must be in the same domain.

References: Training Guide: Installing and Configuring Windows Server 2012 R2: Chapter 10: Implementing Group Policy, p.470, 482 <http://technet.microsoft.com/en-us/library/jj134176> WMI filtering using GPMC

QUESTION 3

Your company has a main office and two branch offices. The offices connect to each other by using a WAN link.

In the main office, you have a server named Server1 that runs Windows Server 2012 R2. Server1 is configured to use an IPv4 address only.

You need to assign an IPv6 address to Server1. The IP address must be private and routable.

Which IPv6 address should you assign to Server1?

- A. fe80:ab32:145c::32cc:401b
- B. ff00:3fff:65df:145c:dca8::82a4
- C. 2001:ab32:145c::32cc:401b
- D. fd00:ab32:14:ad88:ac:58:abc2:4

Correct Answer: D

Unique local addresses are IPv6 addresses that are private to an organization in the same way that private addresses such as 10.x.x.x, 192.168.x.x, or 172.16.0.0 172.31.255.255 can be used on an IPv4 network. Unique local addresses,

therefore, are not routable on the IPv6 Internet in the same way that an address like 10.20.100.55 is not routable on the IPv4 Internet. A unique local address is always structured as follows:

The first 8 bits are always 11111101 in binary format. This means that a unique local address always begins with FD and has a prefix identifier of FD00::/8.

QUESTION 4

You have a server named Print1 that runs Windows Server 2012 R2.

On Print1, you share a printer named Printer1.

You need to ensure that only the members of the Server Operators group, the Administrators group, and the Print Operators group can send print jobs to Printer1.

What should you do?

- A. Remove the permissions for the Creator Owner group.
- B. Assign the Print permission to the Server Operators group.
- C. Remove the permissions for the Everyone group.



D. Assign the Print permission to the Administrators group.

Correct Answer: C

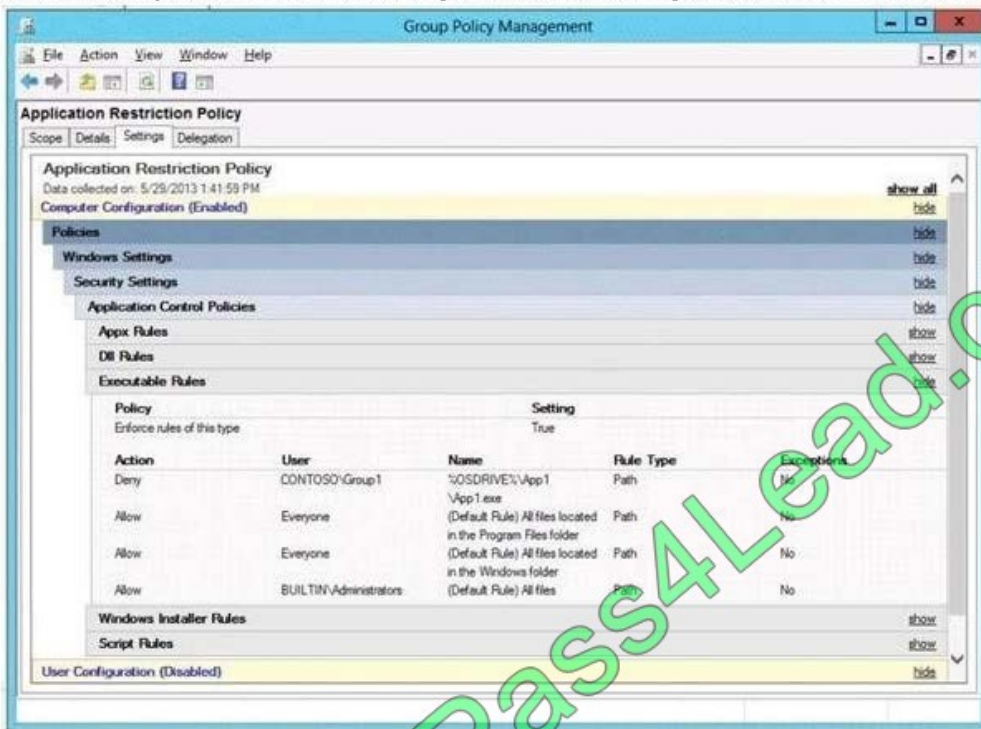
By default Everyone can print. This permissions need to be removed.

QUESTION 5

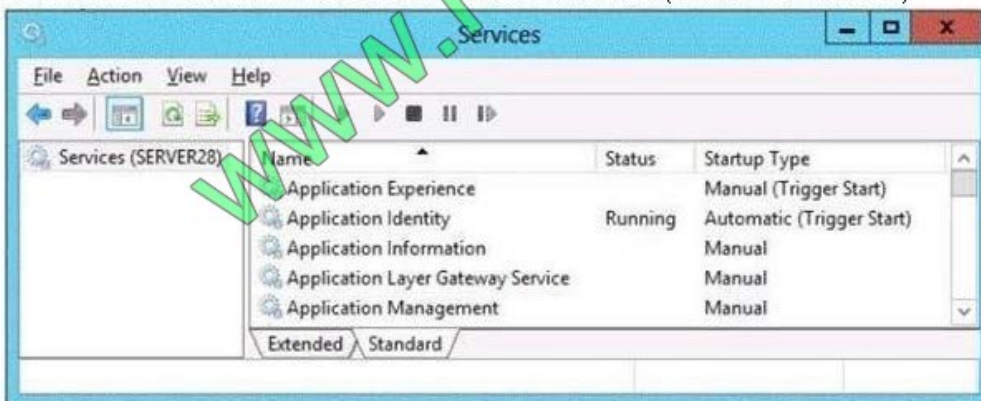
Your network contains an Active Directory domain. The domain contains a server named Server28. The computer account of Server 28 is located in an organizational unit (OU) named OU1. A Group Policy object (GPO) named Application

Restriction Policy is linked to OU1. The settings of the GPO are configured as shown in the GPO Settings exhibit. (Click the Exhibit button.)

Restriction Policy is linked to OU1. The settings of the GPO are configured as shown in the GPO Settings exhibit. (Click the Exhibit button.)



The Services console on Server28 is shown in the Services exhibit. (Click the Exhibit button.)



Select Yes if the statement can be shown to be true based on the available information; otherwise select No. Each



correct selection is worth one point.

Hot Area:

	Yes	No
The members of Group1 will be able to run %programfiles%\app1.exe while they are logged on to Server28.	<input type="checkbox"/>	<input type="checkbox"/>
The members of Group1 will be able to run %systemroot%\system32\regedt32.exe while they are logged on to Server28.	<input type="checkbox"/>	<input type="checkbox"/>
The members of the Administrators group will be able to run %systemroot%\system32\regedt32.exe while they are logged on to Server28.	<input type="checkbox"/>	<input type="checkbox"/>

Correct Answer:

	Yes	No
The members of Group1 will be able to run %programfiles%\app1.exe while they are logged on to Server28.	<input type="checkbox"/>	<input checked="" type="checkbox"/>
The members of Group1 will be able to run %systemroot%\system32\regedt32.exe while they are logged on to Server28.	<input checked="" type="checkbox"/>	<input type="checkbox"/>
The members of the Administrators group will be able to run %systemroot%\system32\regedt32.exe while they are logged on to Server28.	<input checked="" type="checkbox"/>	<input type="checkbox"/>



To Read the [Whole Q&As](#), please purchase the [Complete Version](#) from [Our website](#).

Try our product !

100% Guaranteed Success

100% Money Back Guarantee

365 Days Free Update

Instant Download After Purchase

24x7 Customer Support

Average 99.9% Success Rate

More than 800,000 Satisfied Customers Worldwide

Multi-Platform capabilities - [Windows](#), [Mac](#), [Android](#), [iPhone](#), [iPod](#), [iPad](#), [Kindle](#)

We provide exam PDF and VCE of Cisco, Microsoft, IBM, CompTIA, Oracle and other IT Certifications. You can view Vendor list of All Certification Exams offered:

<https://www.pass4lead.com/allproducts>

Need Help

Please provide as much detail as possible so we can best assist you.

To update a previously submitted ticket:



 <p>One Year Free Update Free update is available within One Year after your purchase. After One Year, you will get 50% discounts for updating. And we are proud to boast a 24/7 efficient Customer Support system via Email.</p>	 <p>Money Back Guarantee To ensure that you are spending on quality products, we provide 100% money back guarantee for 30 days from the date of purchase.</p>	 <p>Security & Privacy We respect customer privacy. We use McAfee's security service to provide you with utmost security for your personal information & peace of mind.</p>
---	---	--

Any charges made through this site will appear as Global Simulators Limited.

All trademarks are the property of their respective owners.

Copyright © pass4lead, All Rights Reserved.