



# 70-411<sup>Q&As</sup>

Administering Windows Server 2012

## Pass Microsoft 70-411 Exam with 100% Guarantee

Free Download Real Questions & Answers **PDF** and **VCE** file from:

<https://www.pass4lead.com/70-411.html>

100% Passing Guarantee  
100% Money Back Assurance

Following Questions and Answers are all new published by Microsoft  
Official Exam Center

-  **Instant Download** After Purchase
-  **100% Money Back** Guarantee
-  **365 Days** Free Update
-  **800,000+** Satisfied Customers





## QUESTION 1

Your network contains an Active Directory domain named contoso.com. All servers run Windows Server 2012 R2.

An organizational unit (OU) named ResearchServers contains the computer accounts of all research servers.

All domain users are configured to have a minimum password length of eight characters.

You need to ensure that the minimum password length of the local user accounts on the research servers in the ResearchServers OU is 10 characters.

What should you do?

- A. Configure a local Group Policy object (GPO) on each research server.
- B. Create and link a Group Policy object (GPO) to the ResearchServers OU.
- C. Create a universal group that contains the research servers. Create a Password Settings object (PSO) and assign the PSO to the group.
- D. Create a global group that contains the research servers. Create a Password Settings object (PSO) and assign the PSO to the group.

Correct Answer: B

For a domain, and you are on a member server or a workstation that is joined to the domain

1.  
Open Microsoft Management Console (MMC).
2.  
On the File menu, click Add/Remove Snap-in, and then click Add.
3.  
Click Group Policy Object Editor, and then click Add.
4.  
In Select Group Policy Object, click Browse.
5.  
In Browse for a Group Policy Object, select a Group Policy object (GPO) in the appropriate domain, site, or organizational unit--or create a new one, click OK, and then click Finish.
6.  
Click Close, and then click OK.
7.  
In the console tree, click Password Policy.



Where?

Group Policy Object [computer name] Policy/Computer Configuration/Windows Settings/Security Settings/Account Policies/Password Policy

8.

In the details pane, right-click the policy setting that you want, and then click Properties.

9.

If you are defining this policy setting for the first time, select the Define this policy setting check box.

10.

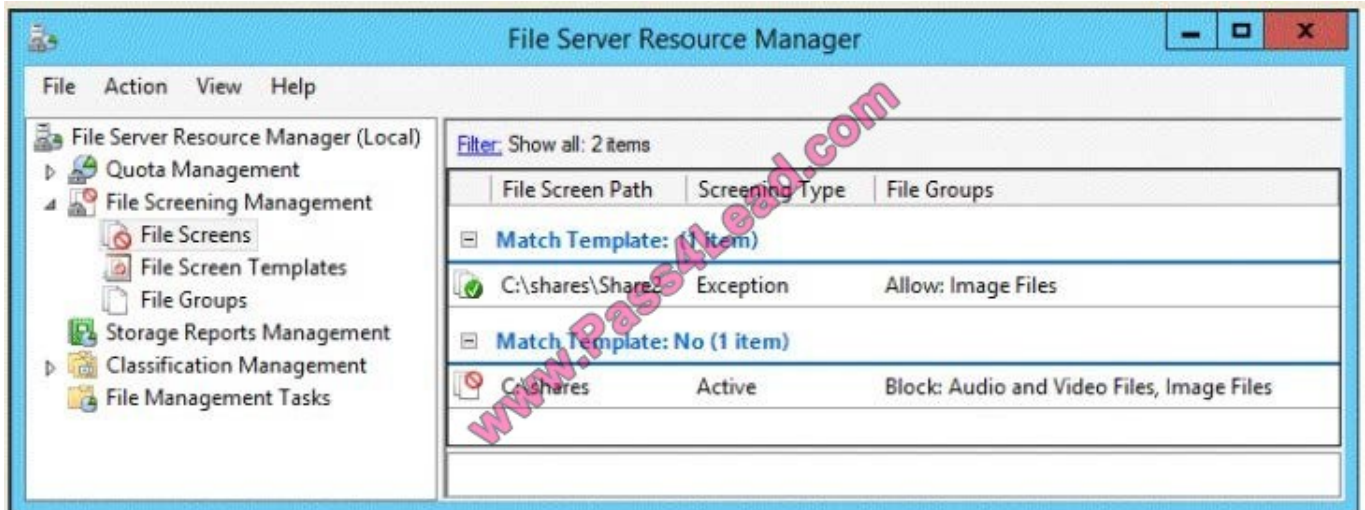
Select the options that you want, and then click OK.

## QUESTION 2

You have a file server named Server1 that runs Windows Server 2012 R2.

A user named User1 is assigned the modify NTFS permission to a folder named C:\shares and all of the subfolders of C:\shares.

On Server1, you open File Server Resource Manager as shown in the exhibit. (Click the Exhibit button.)



To answer, complete each statement according to the information presented in the exhibit. Each correct selection is worth one point.

Hot Area:



Answer Area

User1 can copy a file named ... to C:\shares.

File1.gif
File2.bmp
File3.jpg.zip
File4.mp3

User1 cannot copy a file named ... to a folder named C:\shares\share2.

File1.gif
File2.bmp
File3.jpg.zip
File4.mp3

Correct Answer:

Answer Area

User1 can copy a file named ... to C:\shares.

File1.gif
File2.bmp
File3.jpg.zip
File4.mp3

User1 cannot copy a file named ... to a folder named C:\shares\share2.

File1.gif
File2.bmp
File3.jpg.zip
File4.mp3

**QUESTION 3**

Your network contains an Active Directory domain named contoso.com. The domain contains a server named Server1 that runs Windows Server 2012 R2 and has the Network Policy Server role service installed.

An administrator creates a RADIUS client template named Template1.

You create a RADIUS client named Client1 by using Template 1.

You need to modify the shared secret for Client1.

What should you do first?

- A. Configure the Advanced settings of Template1.
- B. Set the Shared secret setting of Template1 to Manual.



C. Clear Enable this RADIUS client for Client1.

D. Clear Select an existing template for Client1.

Correct Answer: D

Clear checkmark for Select an existing template in the new client wizard.

In New RADIUS Client, in Shared secret, do one of the following:

Bullet Ensure that Manual is selected, and then in Shared secret, type the strong password that is also entered on the RADIUS client. Retype the shared secret in Confirm shared secret.



New RADIUS Client

Settings | Advanced

Enable this RADIUS client

Select an existing template:

Template1

Name and Address

Friendly name:  
Client1

Address (IP or DNS):  
192.168.1.1

Shared Secret

Select an existing Shared Secrets template:  
None

To manually type a shared secret, click Manual. To automatically generate a shared secret, click Generate. You must configure the RADIUS client with the same shared secret entered here. Shared secrets are case-sensitive.

Manual  Generate

Shared secret:  
\*\*\*

Confirm shared secret:  
\*\*\*

OK Cancel

New RADIUS Client

Settings | Advanced

Enable this RADIUS client

Select an existing template:

Template1

Name and Address

Friendly name:  
Client1

Address (IP or DNS):  
192.168.1.1

Shared Secret

Select an existing Shared Secrets template:  
None  
None  
123

To manually type a shared secret, click Manual. To automatically generate a shared secret, click Generate. You must configure the RADIUS client with the same shared secret entered here. Shared secrets are case-sensitive.

Manual  Generate

Shared secret:  
\*\*\*

Confirm shared secret:  
\*\*\*

OK Cancel



#### QUESTION 4

You have a server named Server1 that runs Windows Server 2012 R2. Server1 has the File Server Resource Manager role service installed.

Server1 has a folder named Folder1 that is used by the human resources department.

You need to ensure that an email notification is sent immediately to the human resources manager when a user copies an audio file or a video file to Folder1.

What should you configure on Server1?

- A. a file screen
- B. a file group
- C. a storage report task
- D. a file screen exception

Correct Answer: A

---

#### QUESTION 5

Your network contains an Active Directory domain named contoso.com. The domain contains a server named NPS1 that has the Network Policy Server server role installed. All servers run Windows Server 2012 R2.

You install the Remote Access server role on 10 servers.

You need to ensure that all of the Remote Access servers use the same network policies.

Which two actions should you perform? (Each correct answer presents part of the solution.

Choose two.)

- A. Configure each Remote Access server to use the Routing and Remote Access service (RRAS) to authenticate connection requests.
- B. On NPS1, create a remote RADIUS server group. Add all of the Remote Access servers to the remote RADIUS server group.
- C. On NPS1, create a new connection request policy and add a Tunnel-Type and a Service-Type condition.
- D. Configure each Remote Access server to use a RADIUS server named NPS1.
- E. On NPS1, create a RADIUS client template and use the template to create RADIUS clients.

Correct Answer: CD

Connection request policies are sets of conditions and settings that allow network administrators to designate which RADIUS servers perform the authentication and authorization of connection requests that the server running Network



Policy Server (NPS) receives from RADIUS clients. Connection request policies can be configured to designate which RADIUS servers are used for RADIUS accounting. When you configure Network Policy Server (NPS) as a Remote Authentication Dial-In User Service (RADIUS) proxy, you use NPS to forward connection requests to RADIUS servers that are capable of processing the connection requests because they can perform authentication and authorization in the domain where the user or computer account is located. For example, if you want to forward connection requests to one or more RADIUS servers in untrusted domains, you can configure NPS as a RADIUS proxy to forward the requests to the remote RADIUS servers in the untrusted domain. To configure NPS as a RADIUS proxy, you must create a connection request policy that contains all of the information required for NPS to evaluate which messages to forward and where to send the messages.

Reference: [http://technet.microsoft.com/en-us/library/cc730866\(v=ws.10\).aspx](http://technet.microsoft.com/en-us/library/cc730866(v=ws.10).aspx)

[70-411 Practice Test](#)

[70-411 Exam Questions](#)

[70-411 Braindumps](#)





To Read the [Whole Q&As](#), please purchase the [Complete Version](#) from [Our website](#).

## Try our product !

100% Guaranteed Success

100% Money Back Guarantee

365 Days Free Update

Instant Download After Purchase

24x7 Customer Support

Average 99.9% Success Rate

More than 800,000 Satisfied Customers Worldwide

Multi-Platform capabilities - [Windows](#), [Mac](#), [Android](#), [iPhone](#), [iPod](#), [iPad](#), [Kindle](#)

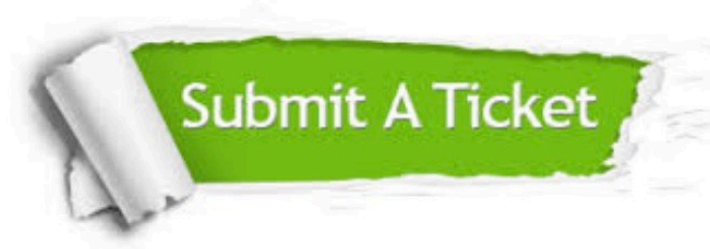
We provide exam PDF and VCE of Cisco, Microsoft, IBM, CompTIA, Oracle and other IT Certifications. You can view Vendor list of All Certification Exams offered:

<https://www.pass4lead.com/allproducts>

## Need Help

Please provide as much detail as possible so we can best assist you.

To update a previously submitted ticket:



 <p><b>One Year Free Update</b> Free update is available within One Year after your purchase. After One Year, you will get 50% discounts for updating. And we are proud to boast a 24/7 efficient Customer Support system via Email.</p>	 <p><b>Money Back Guarantee</b> To ensure that you are spending on quality products, we provide 100% money back guarantee for 30 days from the date of purchase.</p>	 <p><b>Security &amp; Privacy</b> We respect customer privacy. We use McAfee's security service to provide you with utmost security for your personal information &amp; peace of mind.</p>
---	---	--

Any charges made through this site will appear as Global Simulators Limited.

All trademarks are the property of their respective owners.

Copyright © pass4lead, All Rights Reserved.