



# 70-411<sup>Q&As</sup>

Administering Windows Server 2012

## Pass Microsoft 70-411 Exam with 100% Guarantee

Free Download Real Questions & Answers **PDF** and **VCE** file from:

<https://www.pass4lead.com/70-411.html>

100% Passing Guarantee  
100% Money Back Assurance

Following Questions and Answers are all new published by Microsoft  
Official Exam Center

-  **Instant Download** After Purchase
-  **100% Money Back** Guarantee
-  **365 Days** Free Update
-  **800,000+** Satisfied Customers





## QUESTION 1

Your network contains an Active Directory domain named contoso.com. All domain controllers run Windows Server 2012 R2.

On all of the domain controllers, Windows is installed in C:\Windows and the Active Directory database is located in D:\Windows\NTDS\.

All of the domain controllers have a third-party application installed.

The operating system fails to recognize that the application is compatible with domain controller cloning.

You verify with the application vendor that the application supports domain controller cloning.

You need to prepare a domain controller for cloning.

What should you do?

- A. In D:\Windows\NTDS\, create an XML file named DCCloneConfig.xml and add the application information to the file.
- B. In the root of a USB flash drive, add the application information to an XML file named DefaultDCCloneAllowList.xml.
- C. In D:\Windows\NTDS\, create an XML file named CustomDCCloneAllowList.xml and add the application information to the file.
- D. In C:\Windows\System32\Sysprep\Actionfiles\, add the application information to an XML file named Respecialize.xml.

Correct Answer: C

Place the CustomDCCloneAllowList.xml file in the same folder as the Active Directory database (ntds.dit) on the source Domain Controller.

```
Administrator: Windows PowerShell
Windows PowerShell
Copyright (C) 2012 Microsoft Corporation. All rights reserved.

PS C:\Users\Administrator.DC01> Get-ADDCCloningExcludedApplicationList

Name                Type
----                -
WLMS                Service

PS C:\Users\Administrator.DC01> Get-ADDCCloningExcludedApplicationList -GenerateXml
The inclusion list was written to 'C:\Windows\NTDS\CustomDCCloneAllowList.xml'.
PS C:\Users\Administrator.DC01>
```

References: <http://blogs.dirteam.com/blogs/sanderberkouwer/archive/2012/09/10/new-features-in-active-directory-domain-services-in-windows-server-2012-part-13-domain-controller-cloning.aspx> <http://www.thomasmaurer.ch/2012/08/windowsserver-2012-hyper-v-how-to-clone-a-virtual-domain-controller> <http://technet.microsoft.com/en-us/library/hh831734.aspx>

## QUESTION 2

Your network contains a server named Server1 that has the Network Policy and Access Services server role installed.



All of the network access servers forward connection requests to Server1.

You create a new network policy on Server1.

You need to ensure that the new policy applies only to connection requests from the 192.168.0.0/24 subnet.

What should you do?

- A. Set the Client IP4 Address condition to 192.168.0.0/24.
- B. Set the Client IP4 Address condition to 192.168.0.
- C. Set the Called Station ID constraint to 192.168.0.0/24.
- D. Set the Called Station ID constraint to 192.168.0.

Correct Answer: B

RADIUS client properties

Following are the RADIUS client conditions that you can configure in network policy. Calling Station ID: Specifies the network access server telephone number that was dialed by the dial-up access client.

Client Friendly Name: Specifies the name of the RADIUS client that forwarded the connection request to the NPS server.

Client IPv4 Address: Specifies the Internet Protocol (IP) version 4 address of the RADIUS client that forwarded the connection request to the NPS server. Client IPv6 Address: Specifies the Internet Protocol (IP) version 6 address of the

RADIUS client that forwarded the connection request to the NPS server. Client Vendor: Specifies the name of the vendor or manufacturer of the RADIUS client that sends connection requests to the NPS server. MS RAS Vendor: Specifies the

vendor identification number of the network access server that is requesting authentication.

---

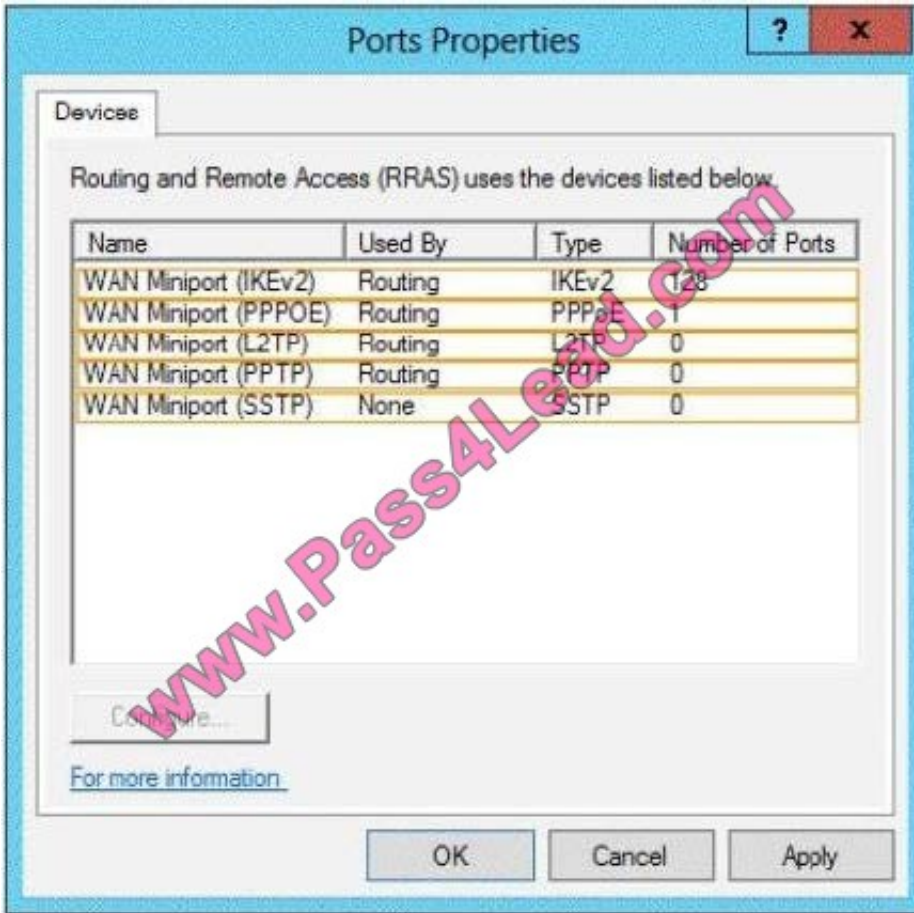
### QUESTION 3

You have a server named Server1 that runs Windows Server 2012 R2. Server1 has the Remote Access server role installed.

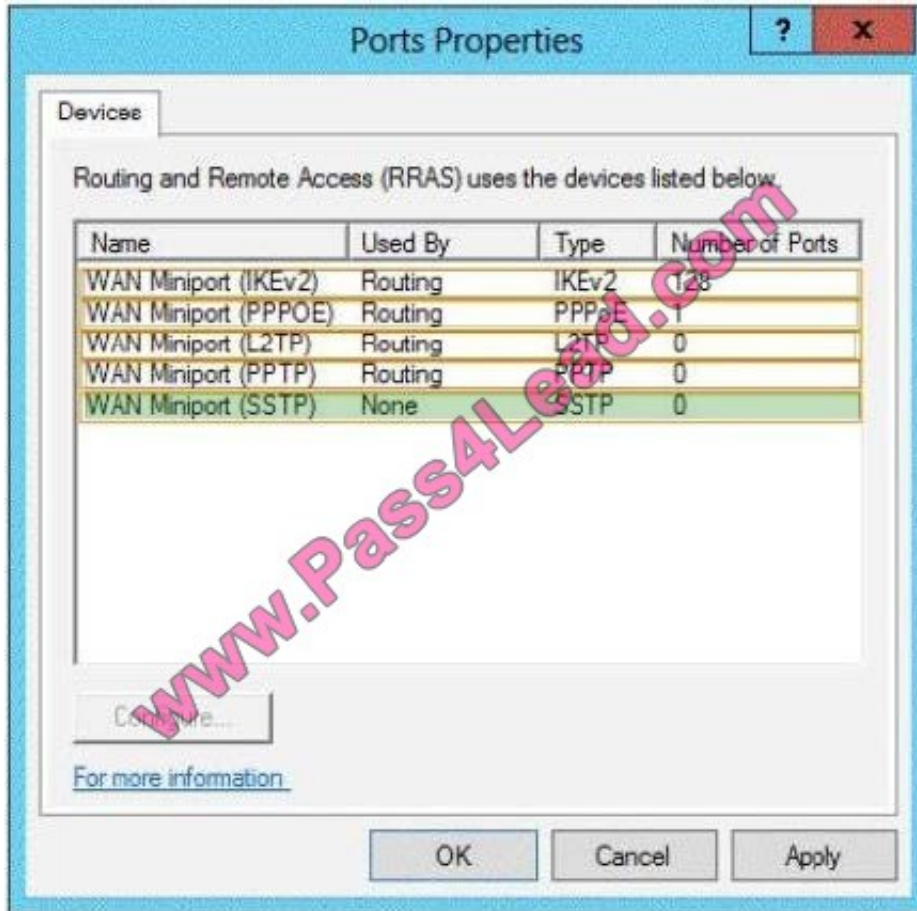
You need to configure the ports on Server1 to ensure that client computers can establish VPN connections to Server1 by using TCP port 443.

What should you modify? To answer, select the appropriate object in the answer area.

Hot Area:



Correct Answer:



**QUESTION 4**

You have a DNS server that runs Windows Server 2012 R2. The server hosts the zone for contoso.com and is accessible from the Internet. You need to create a DNS record for the Sender Policy Framework (SPF) to list the hosts that are authorized to send email for contoso.com. Which type of record should you create?

- A. mail exchanger (MX)
- B. resource record signature (RRSIG)
- C. text (TXT)
- D. name server (NS)

Correct Answer: C

**QUESTION 5**

Your network contains an Active Directory domain named adatum.com. The domain contains a server named Server1 that runs Windows Server 2012 R2. Server1 is configured as a Network Policy Server (NPS) server and as a DHCP



server.

You need to ensure that only computers that send a statement of health are checked for Network Access Protection (NAP) health requirements.

Which two settings should you configure? (Each correct answer presents part of the solution. Choose two.)

- A. The Called Station ID constraints
- B. The MS-Service Class conditions
- C. The Health Policies conditions
- D. The NAS Port Type constraints
- E. The NAP-Capable Computers conditions

Correct Answer: CE

Reference: <http://technet.microsoft.com/en-us/library/cc753603.aspx> [http://technet.microsoft.com/en-us/library/cc731220\(v=ws.10\).aspx](http://technet.microsoft.com/en-us/library/cc731220(v=ws.10).aspx) <http://technet.microsoft.com/en-us/library/cc731560.aspx>

[Latest 70-411 Dumps](#)

[70-411 PDF Dumps](#)

[70-411 Braindumps](#)





To Read the [Whole Q&As](#), please purchase the [Complete Version](#) from [Our website](#).

## Try our product !

100% Guaranteed Success

100% Money Back Guarantee

365 Days Free Update

Instant Download After Purchase

24x7 Customer Support

Average 99.9% Success Rate

More than 800,000 Satisfied Customers Worldwide

Multi-Platform capabilities - [Windows](#), [Mac](#), [Android](#), [iPhone](#), [iPod](#), [iPad](#), [Kindle](#)

We provide exam PDF and VCE of Cisco, Microsoft, IBM, CompTIA, Oracle and other IT Certifications. You can view Vendor list of All Certification Exams offered:

<https://www.pass4lead.com/allproducts>

## Need Help

Please provide as much detail as possible so we can best assist you.

To update a previously submitted ticket:



 <p><b>One Year Free Update</b> Free update is available within One Year after your purchase. After One Year, you will get 50% discounts for updating. And we are proud to boast a 24/7 efficient Customer Support system via Email.</p>	 <p><b>Money Back Guarantee</b> To ensure that you are spending on quality products, we provide 100% money back guarantee for 30 days from the date of purchase.</p>	 <p><b>Security &amp; Privacy</b> We respect customer privacy. We use McAfee's security service to provide you with utmost security for your personal information &amp; peace of mind.</p>
---	---	--

Any charges made through this site will appear as Global Simulators Limited.

All trademarks are the property of their respective owners.

Copyright © pass4lead, All Rights Reserved.