



70-494^{Q&As}

Re for MCSD: Web Applications

Pass Microsoft 70-494 Exam with 100% Guarantee

Free Download Real Questions & Answers **PDF** and **VCE** file from:

<https://www.pass4lead.com/70-494.html>

100% Passing Guarantee
100% Money Back Assurance

Following Questions and Answers are all new published by Microsoft
Official Exam Center

-  **Instant Download** After Purchase
-  **100% Money Back** Guarantee
-  **365 Days** Free Update
-  **800,000+** Satisfied Customers





QUESTION 1

You are developing an ASP.NET MVC application that enables you to edit and save a student object.

The application must not retrieve student objects on an HTTP POST request.

You need to implement the controller.

Which code segment should you use? (Each correct answer presents a complete solution.

Choose all that apply.)



A.

```
public ActionResult EditStudent(int id, Student s)
{
    if (this.HttpContext.Request.RequestType == "GET")
    {
        var s = RetrieveStudent(id);
    }

    if (this.HttpContext.Request.RequestType == "POST")
    {
        SaveStudent(s);
    }
    return View(s);
}
```

B.

```
public ActionResult EditStudent(int id, Student s)
{
    if (this.HttpContext.Request["ActionName"] == "GET")
    {
        var s = RetrieveStudent(id);
    }

    if (this.HttpContext.Request["ActionName"] == "POST")
    {
        SaveStudent(s);
    }
    return View(s);
}
```

C.

```
[HttpGet]
public ActionResult EditStudent(int id)
{
    var s = RetrieveStudent(id);
    return View(s);
}

[HttpPost]
public ActionResult EditStudent(int id, Student s)
{
    SaveStudent(s);
    return View(s);
}
```

D.

```
[ActionName("GET")]
public ActionResult EditStudent(int id)
{
    var s = RetrieveStudent(id);
    return View(s);
}

[ActionName("POST")]
public ActionResult EditStudent(int id, Student s)
{
    SaveStudent(s);
    return View(s);
}
```



- A. Option A
- B. Option B
- C. Option C
- D. Option D

Correct Answer: AC

Reference: Examining the Details and Delete Methods <http://www.asp.net/mvc/overview/getting-started/introduction/examining-the-details-and-delete-methods>

QUESTION 2

You are developing a WCF service.

You need to implement transport security by using NTLM authentication and NetTcpBindings.

Which configuration values should you use? (To answer, drag the appropriate configuration values to the correct location or locations in the answer area. Each configuration value may be used once,

more than once, or not at all. You may need to drag the split bar between panes or scroll to view content.)

Select and Place:

The screenshot shows a configuration editor interface. On the left, there is a list of configuration values to be placed into the XML code on the right. The values are:

- binding="netTcpBinding"
- binding="Transport"
- binding="Ntlm"
- mode="netTcpBinding"
- mode="Transport"
- mode="Ntlm"
- clientCredentialType="netTcpBinding"
- clientCredentialType="Transport"
- clientCredentialType="Ntlm"

The XML code in the 'Answer Area' is as follows:

```
<system.serviceModel>  
  <protocolMapping>  
    <add scheme="https" />  
  </protocolMapping>  
  <bindings>  
    <wsHttpBinding>  
      <binding>  
        <security>  
          <transport>  
            </security>  
          </binding>  
        </wsHttpBinding>  
      </bindings>  
    </system.serviceModel>
```

Correct Answer:



Answer Area

```
<system.serviceModel>
  <protocolMapping>
    <add scheme="https" binding="netTcpBinding" />
  </protocolMapping>
  <bindings>
    <wsHttpBinding>
      <binding>
        <security mode="Transport" />
        <transport clientCredentialType="Ntlm" />
      </binding>
    </wsHttpBinding>
  </bindings>
</system.serviceModel>
```

binding="Transport"
binding="Ntlm"
mode="netTcpBinding"
mode="Ntlm"
clientCredentialType="netTcpBinding"
clientCredentialType="Transport"

www.Pass4Lead.com

QUESTION 3

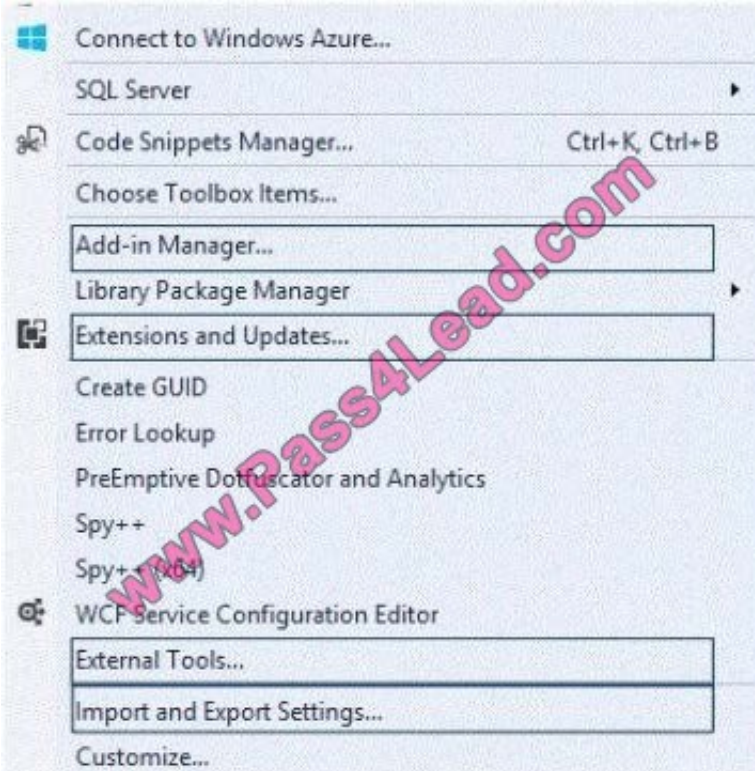
You are supporting an application that uses the ADO.NET Entity Framework to query and access data.

The latest version of a tool will add new templates and wizards that will enhance developer productivity.

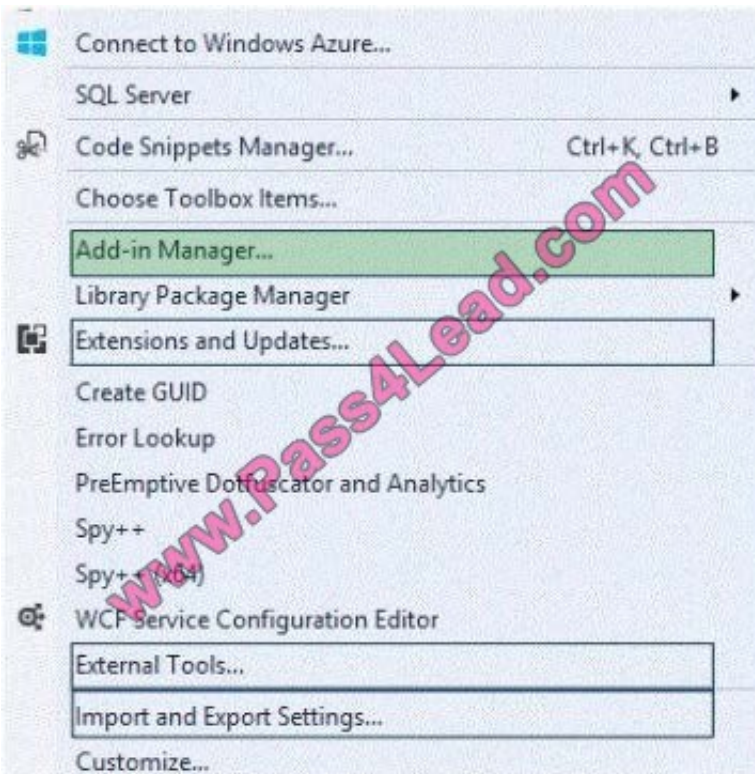
You need to update the tool.

Which Visual Studio 2012 menu item should you choose? (To answer, select the appropriate menu item in the answer area.)

Hot Area:



Correct Answer:





QUESTION 4

You need to implement security according to the business requirements. You have the following code: Which code segments should you include in Target 1, Target 2, Target 3 and Target 4 to modify RunLogController? To answer, drag the appropriate code segment to the correct targets. Each code segment may be used once, more than once, or not at all. You may need to drag the split bar between panes or scroll to view content.

```

Target 1
public class RunLogController : Controller
{
    Target 2
    public ActionResult GetLog()
    ...
    public ActionResult InsertLog()
    ...
    Target 3
    public ActionResult DeleteLog(int id)
    Target 4
    public ActionResult EditLog(int id)
    ...
}
    
```

Select and Place:

Code Segments	Answer area
[Authorize(Roles = "Admin")]	Target 1: Code Segment
[Authorize]	Target 2: Code Segment
[Authorize(Users = "Admin")]	Target 3: Code Segment
[AllowAnonymous]	Target 4: Code Segment
[Authorize(Users = "*")]	

Correct Answer:



Code Segments

```
[Authorize(Roles = "Admin")]  
[Authorize]  
[Authorize(Users = "Admin")]  
[AllowAnonymous]  
[Authorize(Users = "*")]
```

Answer area

Target 1: [Authorize]
Target 2: [AllowAnonymous]
Target 3: [Authorize(Roles = "Admin")]
Target 4: [Authorize(Roles = "Admin")]

QUESTION 5

You are designing a distributed application that runs on the Windows Azure platform.

The application must store a small amount of insecure global information that does not change frequently.

You need to configure the application to meet the requirements.

Which server-side state management option should you use? (Each correct answer presents a complete solution. Choose all that apply.)

- A. Windows Azure application state
- B. SQL Azure
- C. Profile properties of the Windows Azure application
- D. Windows Azure session state

Correct Answer: BD

Explanation: SQL Database provides a relational database management system for Windows Azure and is based on SQL Server technology. With a SQL Database instance, you can easily provision and deploy relational database solutions to the cloud, and take advantage of a distributed data center that provides enterprise-class availability, scalability, and security with the benefits of built-in data protection and self-healing.

Session States in Windows Azure.

If you are a Web developer, you are probably very familiar with managing user state - that is you are familiar with tracking user activity and actions across several request-response exchanges that occur in Web applications. Since HTTP is a stateless protocol, developers over the years have developed all sorts of means to manage state. You'll even find an MSDN page providing alternatives and recommendations for state management here. Cookies, hidden fields, and query strings are some client-side options to tracking user state. When it comes to managing that state on the server-side, most Web developers rely on session objects.



VCE & PDF

Pass4Lead.com

<https://www.pass4lead.com/70-494.html>

2022 Latest pass4lead 70-494 PDF and VCE dumps Download

[70-494 PDF Dumps](#)

[70-494 Practice Test](#)

[70-494 Study Guide](#)



To Read the [Whole Q&As](#), please purchase the [Complete Version](#) from [Our website](#).

Try our product !

100% Guaranteed Success

100% Money Back Guarantee

365 Days Free Update

Instant Download After Purchase

24x7 Customer Support

Average 99.9% Success Rate

More than 800,000 Satisfied Customers Worldwide

Multi-Platform capabilities - [Windows](#), [Mac](#), [Android](#), [iPhone](#), [iPod](#), [iPad](#), [Kindle](#)

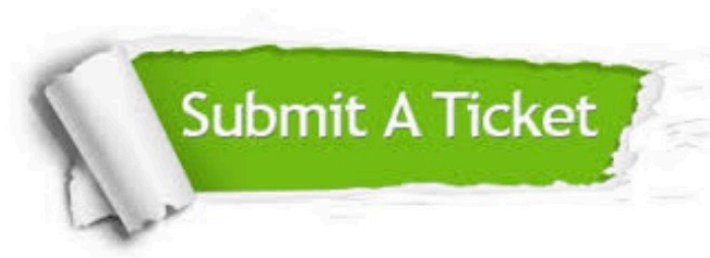
We provide exam PDF and VCE of Cisco, Microsoft, IBM, CompTIA, Oracle and other IT Certifications. You can view Vendor list of All Certification Exams offered:

<https://www.pass4lead.com/allproducts>

Need Help

Please provide as much detail as possible so we can best assist you.

To update a previously submitted ticket:



 <p>One Year Free Update Free update is available within One Year after your purchase. After One Year, you will get 50% discounts for updating. And we are proud to boast a 24/7 efficient Customer Support system via Email.</p>	 <p>Money Back Guarantee To ensure that you are spending on quality products, we provide 100% money back guarantee for 30 days from the date of purchase.</p>	 <p>Security & Privacy We respect customer privacy. We use McAfee's security service to provide you with utmost security for your personal information & peace of mind.</p>
---	---	--

Any charges made through this site will appear as Global Simulators Limited.

All trademarks are the property of their respective owners.

Copyright © pass4lead, All Rights Reserved.