



70-497^{Q&As}

Software Testing with Visual Studio

Pass Microsoft 70-497 Exam with 100% Guarantee

Free Download Real Questions & Answers **PDF** and **VCE** file from:

<https://www.pass4lead.com/70-497.html>

100% Passing Guarantee
100% Money Back Assurance

Following Questions and Answers are all new published by Microsoft
Official Exam Center

-  **Instant Download** After Purchase
-  **100% Money Back** Guarantee
-  **365 Days** Free Update
-  **800,000+** Satisfied Customers





QUESTION 1

You run a manual test on an application by using Microsoft Test Manager (MTM). You have the following testing requirements:

Collect the diagnostic data from the local machine.

Collect the diagnostic data from a remote SQL Server.

You need to identify the components required to configure the test environment to comply with these requirements.

Which two components should you choose? (Each correct answer presents part of the solution. Choose two.)

A.

Configuration variables

B.

Data collectors

C.

Local and remote roles

D.

Build controller

Correct Answer: BC

QUESTION 2

You are using Microsoft Test Manager (MTM) to manage your testing efforts.

You need to produce a list of manual test runs over the past week.

What should you do? (To answer, move the three appropriate actions from the list of actions to the answer area and arrange them in the correct order.)

Select and Place:



Answer Area

In the View list, click **Manual runs**.

Drag the **Created Date** header into the Group by region.

Navigate to the Analyze Test Runs view.

In the Start date range list, click **Last 7 days**.

Correct Answer:

Answer Area

Navigate to the Analyze Test Runs view.

In the View list, click **Manual runs**.

In the Start date range list, click **Last 7 days**.

Drag the **Created Date** header into the Group by region.

Note:

Select the Analyze Test Runs link and select the Show Manual Runs button to view the historical test runs for the current test plan. You may need to change the Start date range to All in order to see some test runs.

ID	State	Owner	Run title	Build number	Created date
21	Completed	Abu Obeida Bakhach (Dev)	7: As a customer I sh...	Tailspin Toys - Iteration 2...	3/18/2010 8:16:40 AM
20	Completed	Abu Obeida Bakhach (Dev)	7: As a customer I sh...	Tailspin Toys - Iteration 2...	3/18/2010 8:15:23 AM
19	Completed	Abu Obeida Bakhach (Dev)	7: As a customer I sh...	Tailspin Toys - Iteration 2...	3/18/2010 8:10:57 AM

QUESTION 3

You are using Microsoft Test Manager (MTM). You are using the Microsoft Solution Framework (MSF) for Agile Software Development process template.

SharePoint integration and reporting are enabled.

You want to assess your team's testing effort.



To do this, you need to:

Identify how much testing has the team completed,

Determine whether the team is likely to finish the testing on time,

Identify how many tests have passed, failed, or blocked, and

Identify how many tests are left to be run. What should you do?

A.

From the team portal, open the Test Activity Excel Report.

B.

From the team portal, open the Test Plan Progress Report.

C.

From the team portal, open the Test Case Readiness Excel Report.

D.

Open the Test Results view in MTM.

Correct Answer: B

After the team creates test plans and starts to run tests by using Microsoft Test Manager, you can use the Test Plan Progress report to track the team's progress in testing the product. You can use this report to answer the following questions:

How much testing has the team completed?

Is the team likely to finish the testing on time?

How many tests are left to be run?

How many tests are passing?

How many tests are failing?

How many tests are blocked?

Reference: Test Plan Progress Report

QUESTION 4

You are a test developer using Microsoft Test Manager (MTM).

You are editing a test plan for a product.

You need to supply a new custom configuration variable in the configuration setting for one of the test cases.

In which order should you perform the actions in MTM? To answer, move all actions from the list of actions to the



answer area and arrange them in the correct order.

Select and Place:

Actions	Answer Area
Select the specific test case in the Test Plan Details pane, and click Configurations in the Test Plan Details pane toolbar.	www.Pass4Lead.com
Modify the test plan configuration by clicking the appropriate configuration.	
Add a new configuration variable by clicking Manage Configuration Variables from the Test Configuration Manager pane.	
Create a new test configuration by using the Configuration Manager page.	

Correct Answer:

Actions	Answer Area
	Add a new configuration variable by clicking Manage Configuration Variables from the Test Configuration Manager pane.
	Create a new test configuration by using the Configuration Manager page.
	Select the specific test case in the Test Plan Details pane, and click Configurations in the Test Plan Details pane toolbar.
	Modify the test plan configuration by clicking the appropriate configuration.

* Step 1-Step 2:

Create new configurations for your team project

A few configurations are already defined for you, but you'll probably want to add your own.

A test configuration is a combination of configuration variable values. Your configuration variables could be, for example, operating system, browser, CPU type, database. A configuration might be "Windows 7 +32-bit CPU" or "Windows 8 +

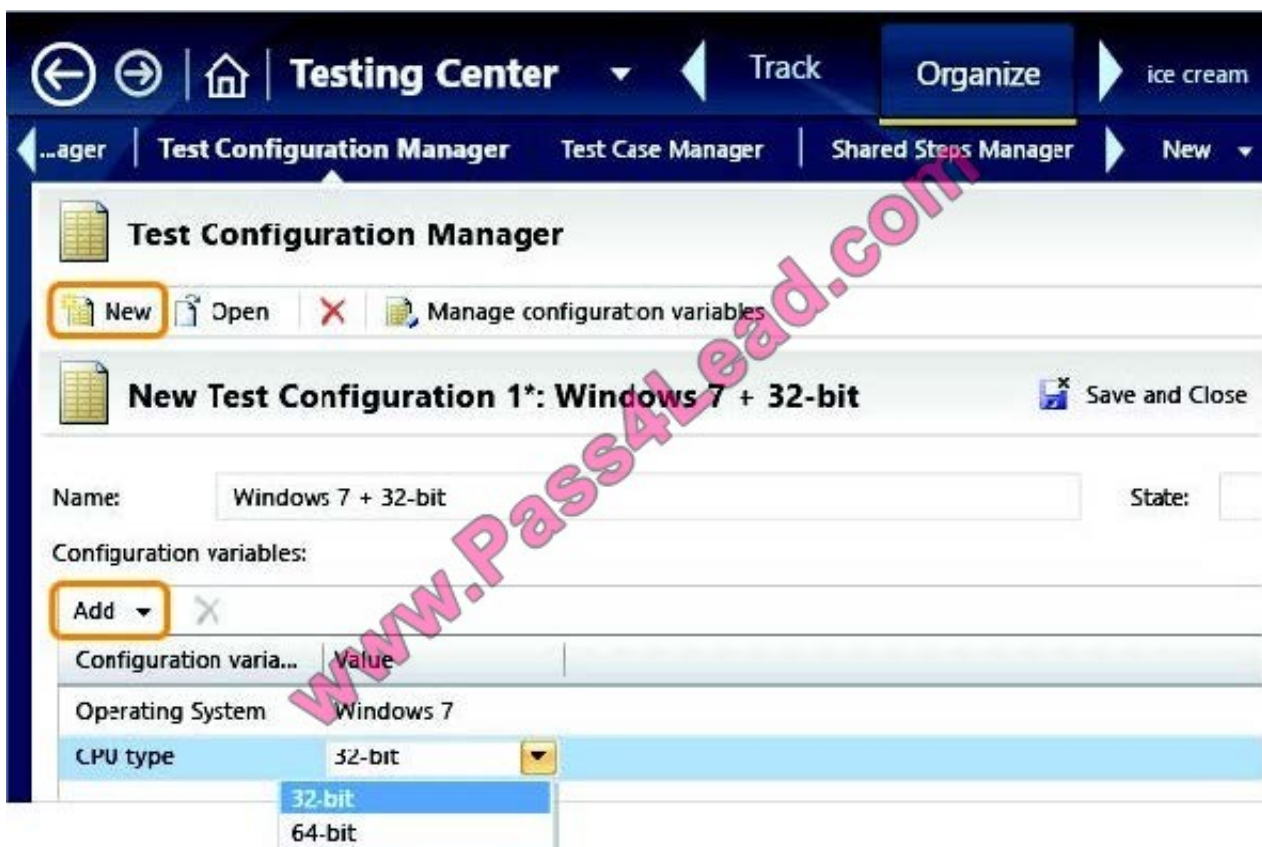
64-bit CPU."

Step 1: Choose Testing Center, Organize, Test Configuration Manager.

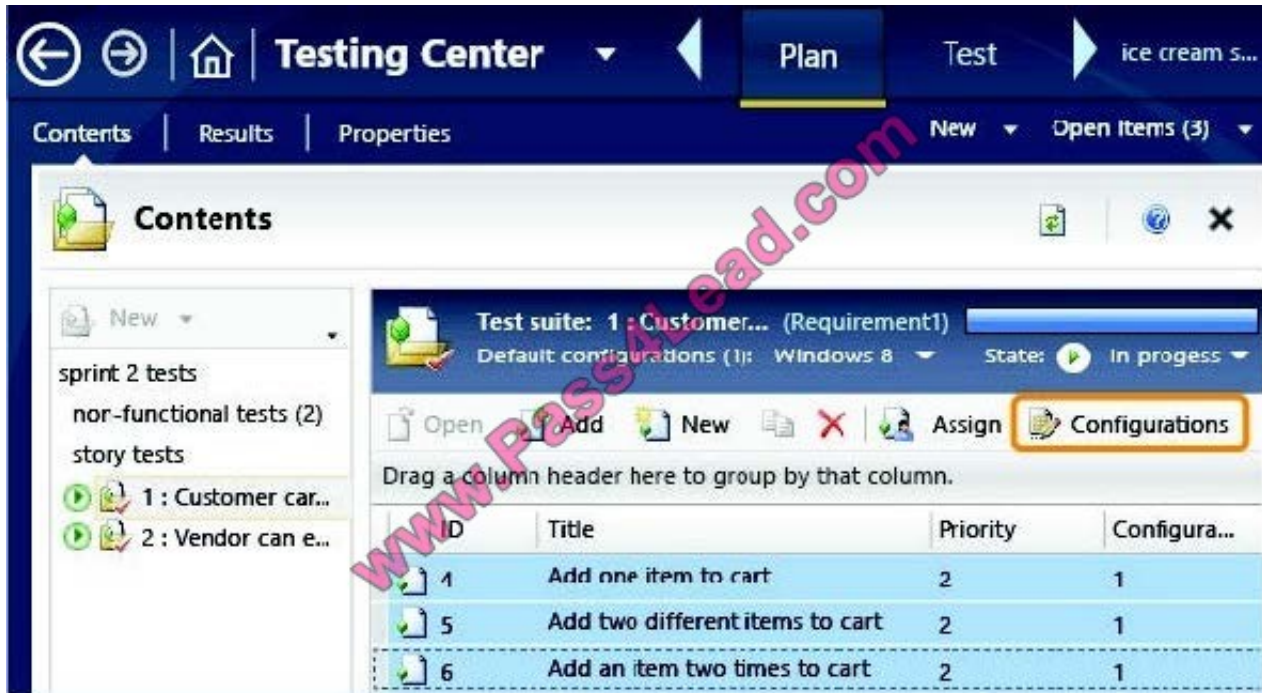
To add your own configuration variables and values, choose Manage configuration variables:



Step 2: Create new configurations that your tests can use:



* Step 3-step4: Open your test plan by opening Testing Center, Plan, Contents. Select one or more tests, then choose Configurations.



Reference: Test configurations: specifying test platforms

QUESTION 5

You are using Microsoft Test Manager (MTM).

Your company would like to support the Windows Server 2008 operating system for the application being tested.

You need to add Windows Server 2008 as a new value to the operating system configuration variable.

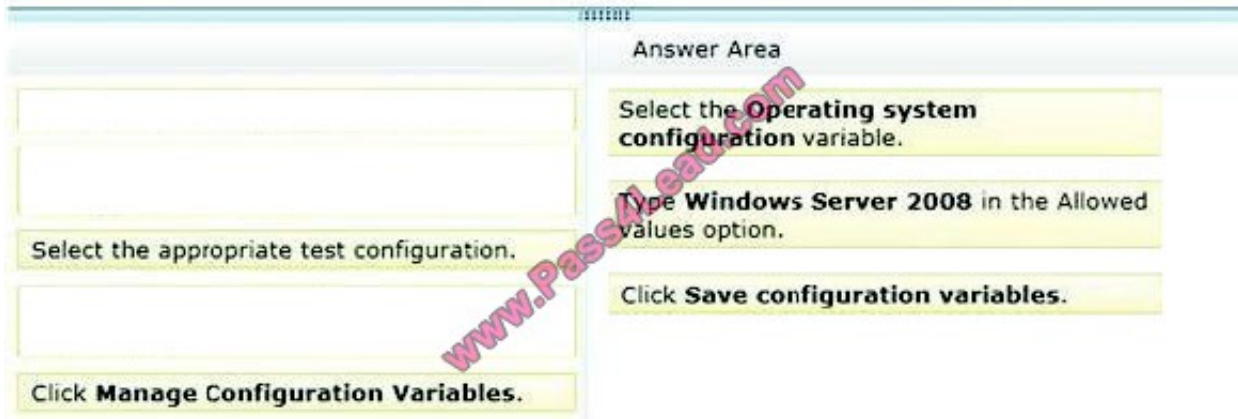
What should you do? (To answer, move the four appropriate actions from the list of actions to the answer area and arrange them in the correct order.)

Select and Place:

The screenshot shows the 'Answer Area' in Microsoft Test Manager. It contains a list of five actions to be selected and placed in the correct order:

- Click **Save configuration variables**.
- Select the **Operating system configuration** variable.
- Select the appropriate test configuration.
- Type **Windows Server 2008** in the Allowed values option.
- Click **Manage Configuration Variables**.

Correct Answer:



Note:

To update the existing configuration variable for a test plan

1. Open Microsoft Test Manager.

To display the Microsoft Test Manager window, click Start, and then click All Programs. Point to Microsoft Visual Studio 2010 and then click Microsoft Test Manager 2010.

2. To display the Test Configuration Manager window, follow these steps:

a. From the Testing Center, click Plan and then click Contents.

The Contents pane is displayed.

b. Click the drop-down arrow next to Default Configurations in the test suite details pane.

The Default configurations for new test cases dialog box is displayed.

c. Click Manage.

– or –

From the Testing Center, click Organize and then click Test Configuration Manager.

The Test Configuration Manager pane is displayed.

3. Select the configuration that has the configuration variable that you want to update.

4. Click Manage configuration variable.

The Manage Configuration Variables box is displayed.

5. On the left pane, select the variable that you want to update.

6. A list of allowed values for the selected variable is displayed on the right side pane.

7. From the list of the allowed values, select the value that you want to update.

8. Type the new value.

9. Click Save configuration variables.



Reference: How to: Update Test Configurations

[70-497 VCE Dumps](#)

[70-497 Study Guide](#)

[70-497 Braindumps](#)



To Read the [Whole Q&As](#), please purchase the [Complete Version](#) from [Our website](#).

Try our product !

100% Guaranteed Success

100% Money Back Guarantee

365 Days Free Update

Instant Download After Purchase

24x7 Customer Support

Average 99.9% Success Rate

More than 800,000 Satisfied Customers Worldwide

Multi-Platform capabilities - [Windows](#), [Mac](#), [Android](#), [iPhone](#), [iPod](#), [iPad](#), [Kindle](#)

We provide exam PDF and VCE of Cisco, Microsoft, IBM, CompTIA, Oracle and other IT Certifications. You can view Vendor list of All Certification Exams offered:

<https://www.pass4lead.com/allproducts>

Need Help

Please provide as much detail as possible so we can best assist you.

To update a previously submitted ticket:



 <p>One Year Free Update Free update is available within One Year after your purchase. After One Year, you will get 50% discounts for updating. And we are proud to boast a 24/7 efficient Customer Support system via Email.</p>	 <p>Money Back Guarantee To ensure that you are spending on quality products, we provide 100% money back guarantee for 30 days from the date of purchase.</p>	 <p>Security & Privacy We respect customer privacy. We use McAfee's security service to provide you with utmost security for your personal information & peace of mind.</p>
---	---	--

Any charges made through this site will appear as Global Simulators Limited.

All trademarks are the property of their respective owners.

Copyright © pass4lead, All Rights Reserved.