



70-497^{Q&As}

Software Testing with Visual Studio

Pass Microsoft 70-497 Exam with 100% Guarantee

Free Download Real Questions & Answers **PDF** and **VCE** file from:

<https://www.pass4lead.com/70-497.html>

100% Passing Guarantee
100% Money Back Assurance

Following Questions and Answers are all new published by Microsoft
Official Exam Center

-  **Instant Download** After Purchase
-  **100% Money Back** Guarantee
-  **365 Days** Free Update
-  **800,000+** Satisfied Customers





QUESTION 1

Your company's test team is working through their bug backlog and tracking their progress on the Bugs dashboard.

The bug backlog continues to grow, but the reports that appear on the Bugs dashboard are neither accurate nor useful.

You need to establish a best practice that will ensure the reports on the Bugs dashboard are accurate and useful.

Which four actions should you perform in sequence? To answer, move the appropriate actions from the list of actions to the answer area and arrange them in the correct order. More than one order of answer choices may be correct. You will receive credit for any of the correct orders you select.

Select and Place:

Actions	Answer Area
Assign a Priority and Severity to each bug.	
List the recent changesets associated with the bugs.	
Update the status of each bug as the development team fixes, verifies, and checks it in.	
Assign each bug to the developer who is working to resolve it.	
Update the status of recent builds.	
Define the bugs, and specify the Sprint and Area/Subarea Paths.	

Correct Answer:

Actions	Answer Area
	Define the bugs, and specify the Sprint and Area/Subarea Paths.
List the recent changesets associated with the bugs.	Assign each bug to the developer who is working to resolve it.
	Assign a Priority and Severity to each bug.
Update the status of recent builds.	Update the status of each bug as the development team fixes, verifies, and checks it in.

Note:

Required activities for tracking bugs



For the reports that appear in the Bugs dashboard to be useful and accurate, the team must perform the following activities:

- * Define Bugs, and specify their Iteration and Area paths.
- * Assign each Bug to the team member who is working to resolve or close it.
- * Specify the Priority of each Bug.
- * Update the State of each Bug as the team fixes, verifies, and closes it.

Reference: Bugs dashboard

QUESTION 2

Your team uses Microsoft Test Manager (MTM) to manage test cases.

You are creating manual test cases so that your team can run the tests as part of the test process.

You need to ensure that testers have to specify whether a test step passes or fails before they finish running the test case.

Which three actions should you perform in sequence? To answer, move the appropriate actions from the list of actions to the answer area and arrange them in the correct order.

Select and Place:

Actions	Answer Area
Add test steps in the Steps tab by entering step information in the Action column.	
From the test suite details pane in MTM, click on the New button to start creating a new test case.	
Click on the Add Verification Test Steps button in the Steps tab, and add the steps that should be marked as passed or failed.	
Add Expected Results for the test steps that you want marked as passed or failed.	
Check the Must Verify check box on each step that should be marked as passed or failed.	

Correct Answer:



Actions	Answer Area
Select the test suite that you want to change in the Test Suite Hierarchy pane.	
Select the default configuration that you want to add from the Default Configurations drop-down menu.	
From Testing Center, click Plan, and then click Contents	
Right-click on the test suite, and select Set Default Configuration.	
Select all test cases in the suite.	

Correct Answer:

Actions	Answer Area
	From Testing Center, click Plan, and then click Contents.
	Select the test suite that you want to change in the Test Suite Hierarchy pane.
	Select the default configuration that you want to add from the Default Configurations drop-down menu.
Right-click on the test suite, and select Set Default Configuration.	
Select all test cases in the suite.	

Update Configurations for Specific Test Cases You can update the default assignments of test configurations to test cases in each suite. You can remove pairings that you do not want to test and add other combinations. This gives you the flexibility to specify in your plan only those pairings of configurations and test cases that you really want to test as shown in the following illustration.



Reference: Creating and Defining a Test Plan

QUESTION 4

You plan to conduct a test for a multi-tier ASP.NET website using Microsoft Test Manager (MTM). You have created a test plan named QA Release 1.0. You also have created a test setting for the QA Release 1.0 test plan with the Database, Web Client, and Web Server roles.

The QA Release 1.0 test plan must specify that test runs:

Collect specific diagnostic trace information to help analyze bugs that are difficult to reproduce, and

Collect information about which methods of your applications code were used when a test case was run.

You need to configure the QA Release 1.0 test plan to meet these requirements.

What should you do?

A. Enable and configure the IntelliTrace, ASP.NET Client Proxy for IntelliTrace and Test Impact diagnostic data adapter



settings.

B. Enable and configure the IntelliTrace, ASP.NET profiler, and Event log diagnostic data adapter settings.

C. Enable and configure the IntelliTrace, ASP.NET Client Proxy for IntelliTrace and Test Impact, and ASP.NET profiler diagnostic data adapter settings.

D. Enable and configure the ASP.NET profiler, Code coverage, and IntelliTrace diagnostic data adapter settings.

Correct Answer: A

Test Settings: Data and Diagnostics

*

(needed) IntelliTrace : You can configure the diagnostic data adapter for IntelliTrace to collect specific diagnostic trace information to help isolate bugs that are difficult to reproduce

*

(needed for Web Client Web Server traffic) ASP.NET Client Proxy for IntelliTrace and Test Impact: This proxy allows you to collect information about the http calls from a client to a Web server for the IntelliTrace and Test Impact diagnostic data adapters.

*

(needed) Test impact : You can collect information about which methods of your applications code were used when a test case was running. This information can be used together with changes to the application code made by developers to determine which tests were impacted by those development changes.

Reference: Specifying Test Settings for Visual Studio Tests

QUESTION 5

You are using Microsoft Test Manager (MTM) to create a test plan for testing an ASP.NET website.

Your test plan needs to validate a set of critical business functionalities for the current sprint. All business functionalities are documented in the requirements document published to the project portal.

You need to associate your test plan with the requirements document.

What should you do?

A. Add a link to the requirements document in the Links section of the Properties view of the test plan.

B. Click Copy Link in the Properties view of the test plan to link the requirements document on the project portal to the test plan.

C. In the Area path drop-down list in the Properties view of the test plan, right-click the test plan area path node relevant to the requirements being tested. Select Add link to associate the requirements document link on the project portal with the area path node.

D. Click Link next to the Description box in the Properties view of the test plan to link the requirements document on the project portal to the test plan.



E. Click Link next to the Name box in the Properties view of the test plan to link the requirements document on the project portal to the test plan.

Correct Answer: A

We would typically add all requirements in the sprint to the test plan to associate the acceptance tests with the corresponding requirement. The figure below shows how we use a work item query matching the Requirement Category and Sprint 1 to find the requirements that we now can add to our plan.

Adding requirements for Sprint 1 to our test plan

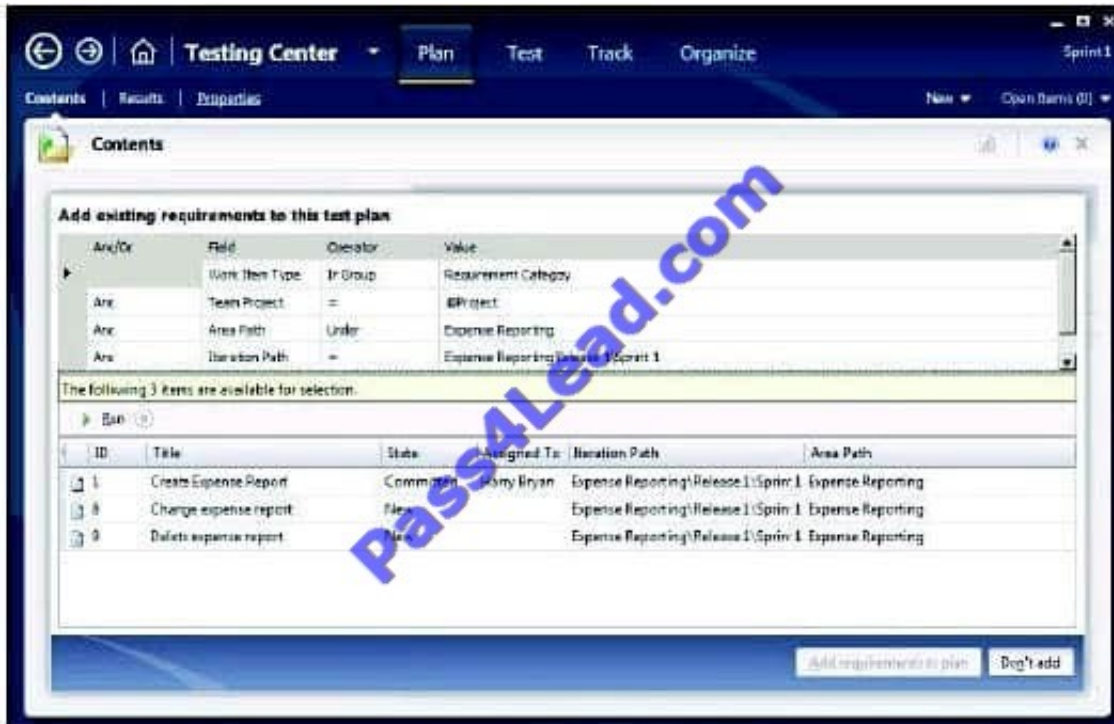
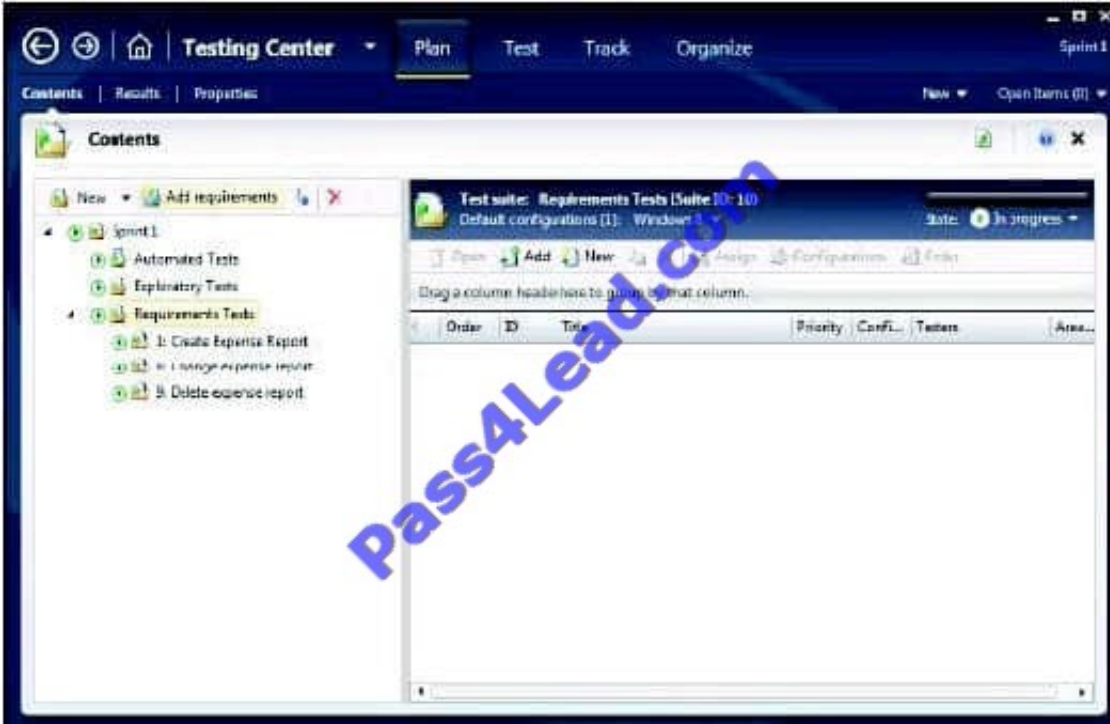


Figure 2, Complete structure for the Sprint 1 test plan



[70-497 PDF Dumps](#)

[70-497 Exam Questions](#)

[70-497 Braindumps](#)



To Read the [Whole Q&As](#), please purchase the [Complete Version](#) from [Our website](#).

Try our product !

100% Guaranteed Success

100% Money Back Guarantee

365 Days Free Update

Instant Download After Purchase

24x7 Customer Support

Average 99.9% Success Rate

More than 800,000 Satisfied Customers Worldwide

Multi-Platform capabilities - [Windows](#), [Mac](#), [Android](#), [iPhone](#), [iPod](#), [iPad](#), [Kindle](#)

We provide exam PDF and VCE of Cisco, Microsoft, IBM, CompTIA, Oracle and other IT Certifications. You can view Vendor list of All Certification Exams offered:

<https://www.pass4lead.com/allproducts>

Need Help

Please provide as much detail as possible so we can best assist you.

To update a previously submitted ticket:



 <p>One Year Free Update Free update is available within One Year after your purchase. After One Year, you will get 50% discounts for updating. And we are proud to boast a 24/7 efficient Customer Support system via Email.</p>	 <p>Money Back Guarantee To ensure that you are spending on quality products, we provide 100% money back guarantee for 30 days from the date of purchase.</p>	 <p>Security & Privacy We respect customer privacy. We use McAfee's security service to provide you with utmost security for your personal information & peace of mind.</p>
---	---	--

Any charges made through this site will appear as Global Simulators Limited.

All trademarks are the property of their respective owners.

Copyright © pass4lead, All Rights Reserved.