



# 70-497<sup>Q&As</sup>

Software Testing with Visual Studio

## Pass Microsoft 70-497 Exam with 100% Guarantee

Free Download Real Questions & Answers **PDF** and **VCE** file from:

<https://www.pass4lead.com/70-497.html>

100% Passing Guarantee  
100% Money Back Assurance

Following Questions and Answers are all new published by Microsoft  
Official Exam Center

-  **Instant Download** After Purchase
-  **100% Money Back** Guarantee
-  **365 Days** Free Update
-  **800,000+** Satisfied Customers





### QUESTION 1

You are part of a test team that uses Microsoft Test Manager (MTM) on a project. The project uses the Microsoft Visual Studio Scrum 2013 process template.

Your test team constantly adds new test cases.

You need to create a test suite that automatically includes all test cases related to the Accounting section of the application.

What should you do?

- A. Create a requirements-based test suite that includes all requirements with an Area Path of Accounting.
- B. Create a query-based test suite that selects all test cases with an Area Path of Accounting.
- C. Create a static suite that includes all test cases, and use the Filter option to only show accounting-related test cases.
- D. Create a new query for all test cases with an Area Path of Accounting, and then copy the resulting test cases into a new test suite.

Correct Answer: A

Requirements-based suites are derived from Product Backlog Items, User Stories, or other requirements. The suite contains all the test cases that are linked to its requirement. This type helps you track how well each requirement has been tested.

Note: By using Microsoft Test Manager, you can organize test cases into a hierarchy of test suites inside test plans. You can run all of the test cases in a suite one after another, and you can set the state of a suite to indicate whether it is planned, in progress, or completed.

Reference: Organizing Test Cases Using Test Suites

---

### QUESTION 2

You are using Microsoft Test Manager (MTM) to run a test case. During the previous run of the same test case, a bug was filed. The developer could not reproduce the bug. The test settings assigned to the test plan do not include an adapter

to collect IntelliTrace data.

You have created a test setting that includes the IntelliTrace data adapter.

You need to re-run the test with the settings that have the IntelliTrace data adapter.

What should you do?

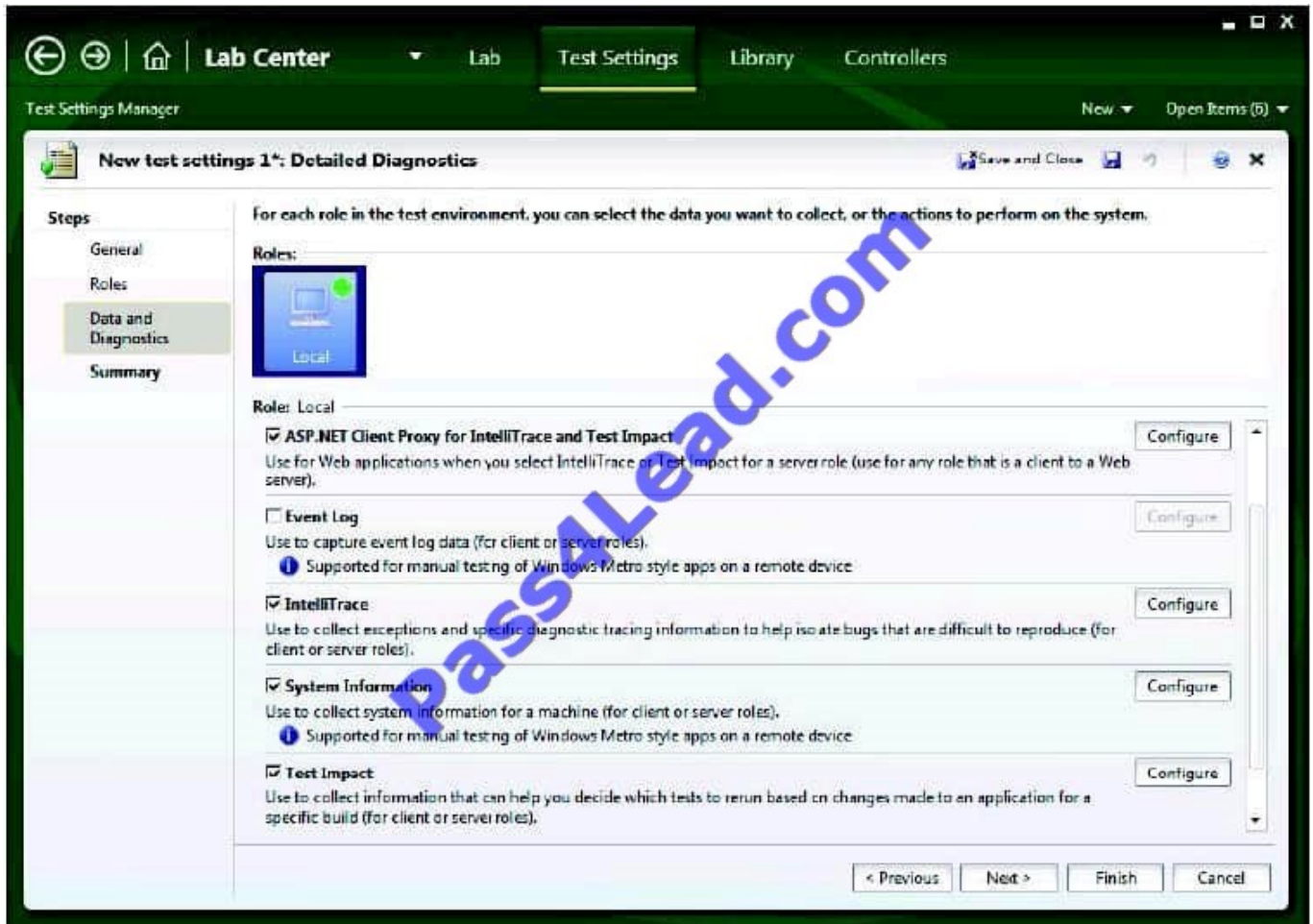
- A. Select the test case. Select the Run with option. Select the test setting that collects IntelliTrace information.
- B. Select the test suite that contains the test case. Click Settings, then right-click IntelliTrace to enable it.
- C. Open the test case. Click Settings to select the settings that have the IntelliTrace data adapter.



D. Run the test case with its default settings. Click View Results and locate the IntelliTrace file that was created when the test case was executed.

Correct Answer: A

\* Creating a new Test Settings



The built-in data adapters in MTM 2012 include:

IntelliTrace: Used to collect run-time and exception information from the system under test that can be used by developers to speed up the time it takes to understand the cause of a problem.

\* When we want to use the test settings we either assign it to the test plan or choose the test setting when we start a test run by selecting Run Options



### QUESTION 3

You are a test developer using Microsoft Test Manager (MTM).

An application that you are testing has gone through a design change. The test case now has five test steps that contain obsolete parameters.

You need to completely remove these parameters, their data values, and their names, but keep the test steps intact.

What should you do?

- A. Delete all of the data value iterations for the obsolete parameters by clicking Delete iteration in the Parameter Values pane.
- B. Delete the obsolete parameters from the test case by clicking Rename parameter in the Parameter Values pane and replace the name with a blank replacement value.
- C. Delete the test steps with the old parameters and insert a new test step in their place.
- D. Delete the obsolete parameters from the test case by clicking Delete parameter in the Parameter Values pane and remove the parameter name from the test steps.

Correct Answer: D

To delete a parameter from your test case, click the parameter in one of the rows in Parameter Values and then click Delete parameter. The Delete parameter dialog box is displayed. You can replace the parameter with a fixed value or just remove it from your steps.



Parameters are preceded by @ symbol

Insert a parameter into the action or expected result for a test step

Steps	Summary	Tested Work Items	Other Links	Attachments	Associated Automation
Insert step		Insert shared steps		@ Insert parameter	
Action	Expected Result				
1. Go to order entry					
2. Enter @Quantity					
3. Override price @Price					
4. Click update	Check total amount is @Total				
Click here to add a step					
Parameter Values:					
Delete iteration	Rename parameter	Delete parameter			
Quantity	Price	Total			
3	4.51	13.53			
10	8.24	82.40			

When you run your test, each row of parameter values is an iteration of your test

Rename a parameter in the test case

Delete a parameter in the test case

Reference: How to: Add Parameters to a Manual Test Case To Run Multiple Times with Different Data

#### QUESTION 4

You are a QA tester on a development team. You are responsible for a large number of test cases on your current project.

You need to bulk edit test steps in a large group of test cases.

Which tool should you use?

- A. Web Test case Management
- B. Microsoft Excel
- C. Microsoft Visual Studio
- D. Microsoft Test Manager

Correct Answer: B

You can modify multiple work items at the same time, a process known as bulk editing. The process is different depending on which client you use.

\*



Team Web Access: Bulk modify work items

\*

Microsoft Excel: Bulk add or modify work items with Excel

\*

Microsoft Project: Create your schedule, backlog, and tasks using Microsoft Project Reference: Modify multiple work items at a time

---

## QUESTION 5

Your company uses Lab Center during manual- and automated-testing processes for different types of testing environments.

Development operations is standardizing their processes. They want to document their best practices for environment setup.

You need to verify your setup of a standard environment, which consists of physical servers that match your production environment. However, you are unable to connect to your new lab environment.

Which action in Lab Center should you perform in order to troubleshoot the problem?

- A. Repair
- B. Manage
- C. Connect
- D. open

Correct Answer: A

Q: The status of my lab environment is Not Ready. What should I do?

A: On the context menu of the environment, choose Repair. The repair will take a few minutes. This status means that the test agent is not installed and correctly configured on one of the machines in the environment. The repair operation logs into the machines and installs and configures the agent.

Incorrect:

Not C: It is stated that the problem is that we are unable to connect. Choosing to connect again would not help.

Reference: Standard lab environments

[70-497 Practice Test](#)

[70-497 Exam Questions](#)

[70-497 Braindumps](#)





To Read the [Whole Q&As](#), please purchase the [Complete Version](#) from [Our website](#).

## Try our product !

100% Guaranteed Success

100% Money Back Guarantee

365 Days Free Update

Instant Download After Purchase

24x7 Customer Support

Average 99.9% Success Rate

More than 800,000 Satisfied Customers Worldwide

Multi-Platform capabilities - [Windows](#), [Mac](#), [Android](#), [iPhone](#), [iPod](#), [iPad](#), [Kindle](#)

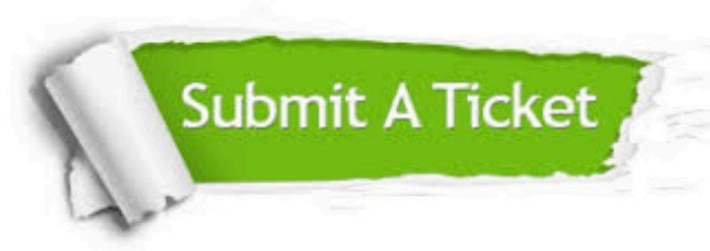
We provide exam PDF and VCE of Cisco, Microsoft, IBM, CompTIA, Oracle and other IT Certifications. You can view Vendor list of All Certification Exams offered:

<https://www.pass4lead.com/allproducts>

## Need Help

Please provide as much detail as possible so we can best assist you.

To update a previously submitted ticket:



 <p><b>One Year Free Update</b> Free update is available within One Year after your purchase. After One Year, you will get 50% discounts for updating. And we are proud to boast a 24/7 efficient Customer Support system via Email.</p>	 <p><b>Money Back Guarantee</b> To ensure that you are spending on quality products, we provide 100% money back guarantee for 30 days from the date of purchase.</p>	 <p><b>Security &amp; Privacy</b> We respect customer privacy. We use McAfee's security service to provide you with utmost security for your personal information &amp; peace of mind.</p>
---	---	--

Any charges made through this site will appear as Global Simulators Limited.

All trademarks are the property of their respective owners.

Copyright © pass4lead, All Rights Reserved.