



# 70-643<sup>Q&As</sup>

Windows Server 2008 Applications Infrastructure, Configuring

## Pass Microsoft 70-643 Exam with 100% Guarantee

Free Download Real Questions & Answers **PDF** and **VCE** file from:

<https://www.pass4lead.com/70-643.html>

100% Passing Guarantee  
100% Money Back Assurance

Following Questions and Answers are all new published by Microsoft  
Official Exam Center

-  **Instant Download** After Purchase
-  **100% Money Back** Guarantee
-  **365 Days** Free Update
-  **800,000+** Satisfied Customers



**QUESTION 1**

Your network contains an Active Directory domain named contoso.com. The domain contains five Remote Desktop Session Host (RD Session Host) servers and one Remote Desktop license server.

You need to ensure that all of the RD Session Host servers use Per User licensing mode.

What should you do? (Each correct answer presents a complete solution. Choose two.)

- A. On the Remote Desktop license server, modify the discovery scope.
- B. On each RD Session Host, modify the license settings.
- C. On the Remote Desktop license server, modify the connection method.
- D. On each RD Session Host, modify the user logon mode setting.
- E. From a Group Policy object (GPO), enable the Set the Remote Desktop licensing mode setting.

Correct Answer: BE

---

**QUESTION 2**

You manage a member server that runs Windows Server 2008 R2. The member server has the Web Server (IIS) server role installed. The server hosts a Web site that is only accessible to the executives of your company.

The company policy states that the executives must access the confidential Web content by using user certificates.

You need to ensure that the executives can only access the secure Web site by using their installed certificates.

What should you do?

- A. Configure the SSL settings to Require 128-bit SSL on the confidential Web site.
- B. Configure the Client Certificates settings to Accept on the SSL settings for the confidential Web site.
- C. Configure the Client Certificates settings to Require on the SSL settings for the confidential Web site.
- D. Configure a Certificate Trust list to include the executives\' certification authority (CA) certificate.

Correct Answer: C

---



## SSL Settings

This page lets you modify the SSL settings for the content of a Web site or application.

Require SSL

Client certificates:

- Ignore
- Accept
- Require



## SSL Settings

This page lets you modify the SSL settings for the content of a Web site or application.

Require SSL

Client certificates:

- Ignore
- Accept
- Require

---

### QUESTION 3

Your network contains an Active Directory domain named adatum.com. The domain contains a server named Server5 that has the Remote Desktop Services (RDS) server role installed and all of the RDS role services installed. Server5 is configured as a file server and a Remote Desktop Services client access licences (RDS CALS) on Server5.

Which tool should you use?

- A. Regedit
- B. Remote Desktop Gateway Manager
- C. Dism
- D. Rdpstsign
- E. Netsh
- F. Remote Desktop Services Manager
- G. Windows System Resource Manager (WSRM)
- H. Rdpinit
- I. Mstsc
- J. Remote Desktop Connection Manager
- K. Remote Desktop Session Host Configuration



Correct Answer: F

---

#### QUESTION 4

Your network contains an Active Directory domain named adatum.com.

You publish a RemoteApp named WebApp5. The Remote Desktop Connection (.rdp) file for WebApp5 is unsigned.

When a user named User5 runs WebApp5 from the Remote Desktop Web Access (RD Web Access) website, Users is prompted for credentials.

You need to prevent users from being prompted for credentials when they run WebApp5.

What should you do?

- A. Enable form-based authentication for the Remote Desktop Web Access Website.
- B. Enable the Assign a default domain for logon Group Policy setting.
- C. Modify the Authentication Settings for the RDWeb virtual directory.
- D. Enable the Allow Delegating Default credentials Group Policy setting.
- E. Configure the SSL Settings for the RDWeb virtual directory.

Correct Answer: D

When applied to Terminal Services, Single Sign-On means using the credentials of the currently logged on user (also called default credentials) to log on to a remote computer. If you use the same user name and password logging on to your local computer and connecting to a Terminal Server, enabling Single Sign-On will allow you to do it seamlessly, without having to type in your password again. Locally logged on credentials are used for connecting to TS Web Access, however, they cannot be shared across TS Web Access and TS or TS Gateway. Thus you will need to enable the Group Policy settings described below in order to use locally logged on credentials for TS or TS Gateway connections.

How to enable Single Sign-On?

Single sign-On can be enabled using domain or local group policy.

1.

Log on to your local machine as an administrator.

2.

Start Group Policy Editor - "gpedit.msc".

3.

Navigate to "Computer Configuration\Administrative Templates\System\Credentials Delegation".

4.



Double-click the "Allow Delegating Default Credentials" policy.

5.

Enable the policy and then click on the "Show" button to get to the server list.

6.

Add "TERMSRV/" to the server list. You can add one or more server names. Using one wildcard (\*) in a name is allowed. For example to enable Single Sign-On to all servers in "MyDomain.com" you can type "TERMSRV/\*.MyDomain.com". (Notice the "Concatenate OS defaults with input above" checkbox on the picture above. When this checkbox is selected your servers are added to the list of servers enabled by OS by default. For Single Sign-On this default list is empty, so the checkbox has no effect.)

7.

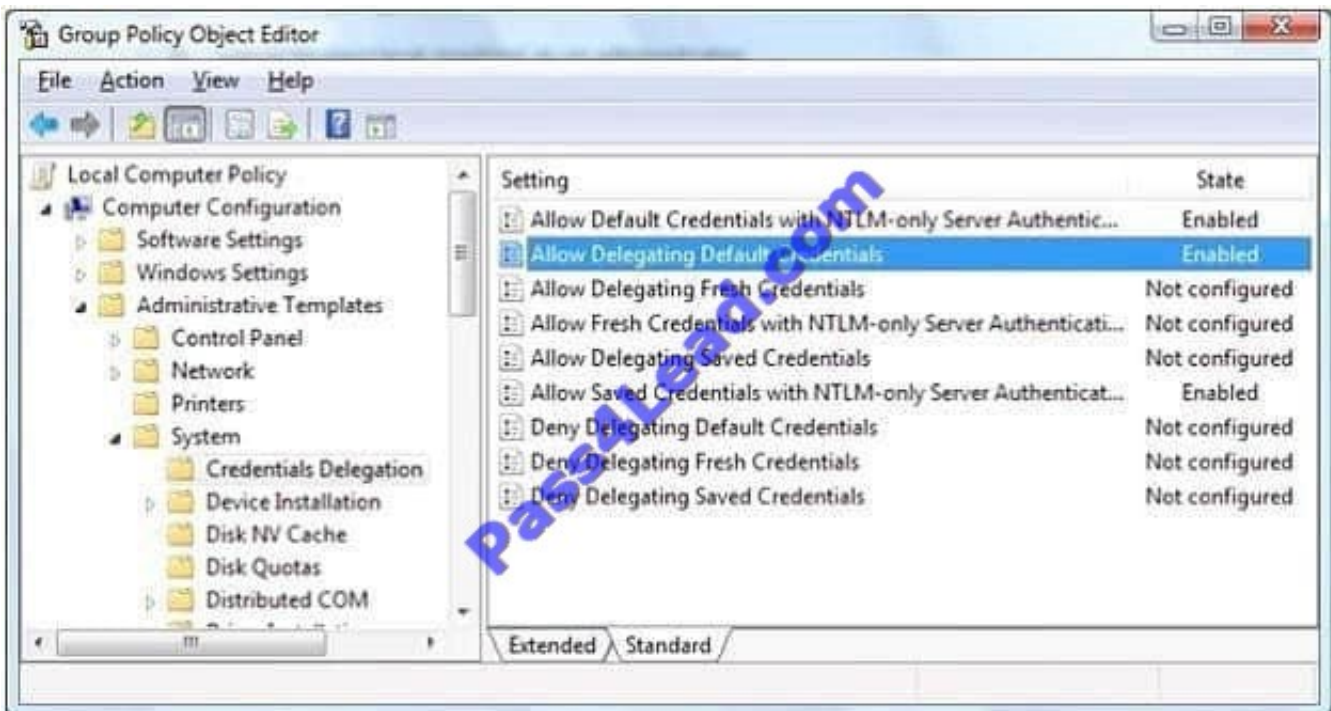
Confirm the changes by clicking on the "OK" button until you return back to the main Group Policy Object Editor dialog.

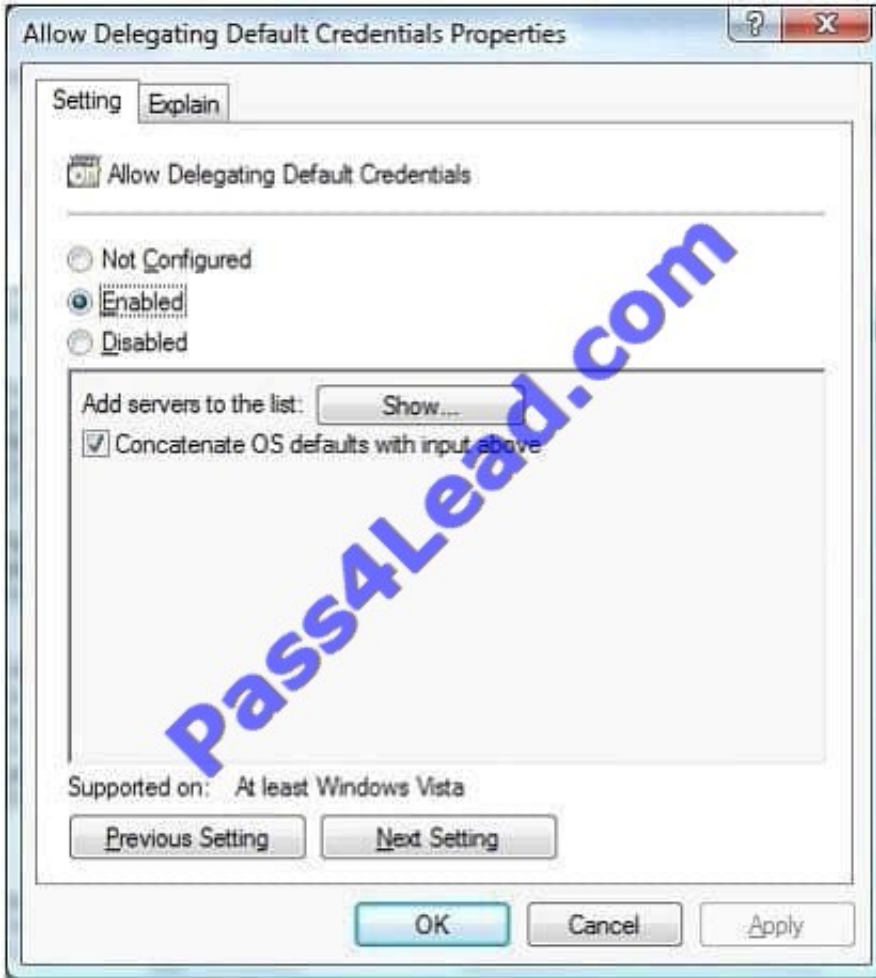
8.

At a command prompt, run "gpupdate" to force the policy to be refreshed immediately on the local machine.

9.

Once the policy is enabled you will not be asked for credentials when connecting to the specified servers.





<http://blogs.msdn.com/b/rds/archive/2007/04/19/how-to-enable-single-sign-on-for-my-terminal-serverconnections.aspx>



### QUESTION 5

You have a Terminal Server that runs Windows Server 2008. You need to configure the server to end any sessions that are inactive for more than one hour. What should you do?

- A. From Terminal Services Manager, create a new group.
- B. From Terminal Services Manager, delete the inactive sessions.
- C. From Terminal Services Configuration, modify the RDP-Tcp settings.
- D. From Terminal Services Configuration, modify the User logon mode setting.

Correct Answer: C

To configure the Terminal Server to end any sessions that are inactive for more than one hour, you need to modify the RDP-Tcp settings from Terminal Services Configuration. You can configure the properties of the terminal server's RDP-TCP connection to provide better protection. You can set session time limits that help to ensure that sessions are not left unattended and active for long periods Reference: How Secure are Windows Terminal Services? / Securing the RDP-TCP Connection [http://www.windowsecurity.com/articles/Windows\\_Terminal\\_Services.html](http://www.windowsecurity.com/articles/Windows_Terminal_Services.html)

[70-643 PDF Dumps](#)

[70-643 VCE Dumps](#)

[70-643 Exam Questions](#)



To Read the [Whole Q&As](#), please purchase the [Complete Version](#) from [Our website](#).

## Try our product !

100% Guaranteed Success

100% Money Back Guarantee

365 Days Free Update

Instant Download After Purchase

24x7 Customer Support

Average 99.9% Success Rate

More than 800,000 Satisfied Customers Worldwide

Multi-Platform capabilities - [Windows](#), [Mac](#), [Android](#), [iPhone](#), [iPod](#), [iPad](#), [Kindle](#)

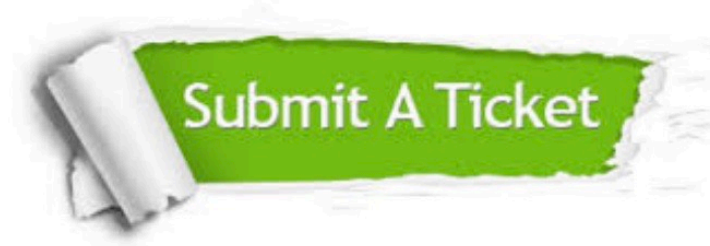
We provide exam PDF and VCE of Cisco, Microsoft, IBM, CompTIA, Oracle and other IT Certifications. You can view Vendor list of All Certification Exams offered:

<https://www.pass4lead.com/allproducts>

## Need Help

Please provide as much detail as possible so we can best assist you.

To update a previously submitted ticket:



 <p><b>One Year Free Update</b> Free update is available within One Year after your purchase. After One Year, you will get 50% discounts for updating. And we are proud to boast a 24/7 efficient Customer Support system via Email.</p>	 <p><b>Money Back Guarantee</b> To ensure that you are spending on quality products, we provide 100% money back guarantee for 30 days from the date of purchase.</p>	 <p><b>Security &amp; Privacy</b> We respect customer privacy. We use McAfee's security service to provide you with utmost security for your personal information &amp; peace of mind.</p>
---	---	--

Any charges made through this site will appear as Global Simulators Limited.

All trademarks are the property of their respective owners.

Copyright © pass4lead, All Rights Reserved.