



70-643^{Q&As}

Windows Server 2008 Applications Infrastructure, Configuring

Pass Microsoft 70-643 Exam with 100% Guarantee

Free Download Real Questions & Answers **PDF** and **VCE** file from:

<https://www.pass4lead.com/70-643.html>

100% Passing Guarantee
100% Money Back Assurance

Following Questions and Answers are all new published by Microsoft
Official Exam Center

-  **Instant Download** After Purchase
-  **100% Money Back** Guarantee
-  **365 Days** Free Update
-  **800,000+** Satisfied Customers





QUESTION 1

Your company has an Active Directory domain. A server named Server1 runs Windows Server 2008 R2. The Remote Desktop Services server role and the RD Web Access role service are installed on Server1.

You install the RD Gateway role service on Server1. You create the Remote Desktop connection authorization policy. Users report that they cannot connect to Server1.

You need to ensure that users can connect to Server1.

What should you do?

- A. Configure Network Access Protection (NAP) on Server1.
- B. Configure the Remote Desktop Resource Authorization Policy (RD RAP) on Server1.
- C. Create a Remote Desktop Group Policy object (GPO). Enable the Allow log on through Remote Desktop Services setting on the GPO. Link the GPO to the domain.
- D. Create a Remote Desktop Group Policy object (GPO). Enable the Set path for Remote Desktop Services Roaming User Profile setting on the GPO. Create an organization unit (OU) named RDSUsers. Link the GPO to the RDSUsers OU.

Correct Answer: B

Remote Desktop resource authorization policies (RD RAPs) allow you to specify the internal network resources (computers) that remote users can connect to through an RD Gateway server. Remote users connecting to the network through an RD Gateway server are granted access to computers on the internal network if they meet the conditions specified in at least one RD CAP and one RD RAP.

Source: <http://technet.microsoft.com/en-us/library/cc772397.aspx>

QUESTION 2

Your network contains a Network Load Balancing (NLB) cluster named NLB01. NLB01 contains two servers named Node1 and Node2 that run Windows Server 2008 R2. Node1 and Node2 are configured as shown in the following table:

Server setting	Server configuration
Initial host state	Started
Retain suspended state after computer starts	Enabled

You need to install Windows updates on Node1 to meet the following requirements:

Prevent new connections to Node1 while the updates are installed. Provide connected users with the ability to complete their session on Node1 before the updates are installed.

What should you do first?

- A. From Network Load Balancing Manager, right-click Model and click Drainstop.
- B. From Network Load Balancing Manager, right-click Node1 and click Suspend.

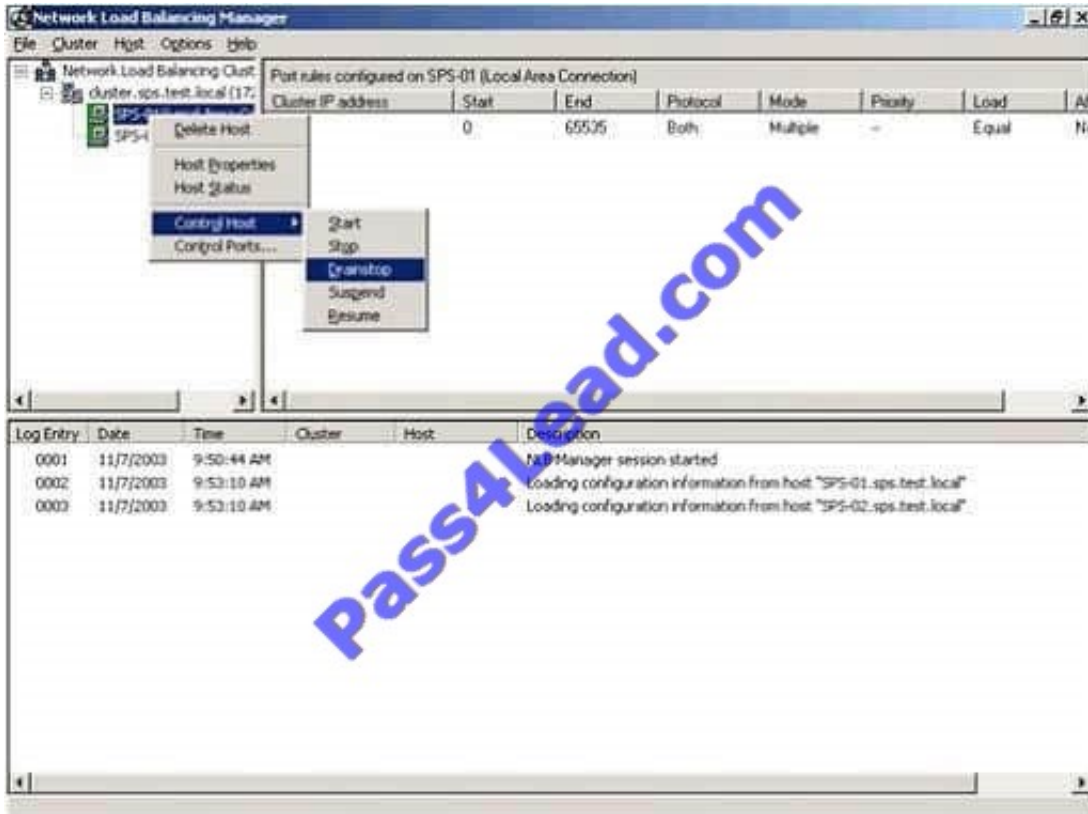


C. From the Services console, right-click Workstation and click Pause.

D. From the Services console, right-click Server and click Pause.

Correct Answer: A

Drainstopping is used to tell the server to continue processing existing requests but not accept any new requests, thus gracefully taking the server down.



<http://office.microsoft.com/download/afile.aspx?AssetID=AM102437081033>

QUESTION 3

Your company has a new server that runs Windows Server 2008. The Web Server (IIS) role is installed.

Your company hosts a public Web site. You notice unusually high traffic volume on the Web site.

You need to identify the source of the traffic.

What should you do?

- A. Enable the Web scripting option.
- B. Run the netstat Can command on the server.
- C. Create a custom view in Event Viewer to filter information from the security log.
- D. Enable Web site logging in the IIS Server Manager and filter the logs for the source IP address.



Correct Answer: D

To find the source of unexpected source of traffic, you should open the IIS server manager and enable website logging which will filter the logs for the source IP address. It will list the IP addresses of the people visiting the website and a lot more information.

QUESTION 4

You have two servers that run Windows Server 2008 R2 Enterprise. Both servers have the Failover Clustering feature installed. You configure the servers as a two-node cluster. The cluster nodes are named NODE1 and NODE2.

You have an application named PrintService that includes a print spooler resource. You need to configure the cluster to automatically return the PrintService application to NODE1 after a failover.

Which two actions should you perform? (Each correct answer presents part of the solution. Choose two.)

- A. Set the Period (hours) option to 0 in the properties of the print spooler resource.
- B. Move NODE1 to the top of the list of preferred owners for the PrintService application.
- C. Enable the Allow Failback and Immediate options for the PrintService application.
- D. Disable the If restart is unsuccessful, failover all resources in this server or application option in the properties of the print spooler resource.

Correct Answer: BC

Preferred nodes list defined If you define a complete preferred nodes list for a group (that is, one listing all the nodes in the cluster), then the Cluster service uses this defined list as its internal list. However, if you define a partial preferred nodes list for a group, then the Cluster service uses this defined list as its internal list and appends any other installed nodes not on the preferred list, ordered by their node IDs. For example, if you created a 5-node cluster (installing the nodes in the order Node1, Node2, Node3, Node4, and Node5) and defined Node3, Node4, and Node5 as preferred owners for the resource group, PRINTGR1, the Cluster service would maintain this ordered list for PRINTGR1: Node3, Node4, Node5, Node1, Node2. How the Cluster service uses this list depends on whether the resource group move is due to a resource/node failure or a manual move group request.

Preferred lists and resource or node failures For resource group or node failures, the group fails over to the node next to the current owner on the preferred nodes list. In the example above, if the resource up PRINTGR1 on Node3 fails, then the Cluster service would fail that group over to the next node on the list, Node4. If you allow failback for that group, then when Node3 comes up again, the Cluster service will fail back PRINTGR1 to that node.

Source: <http://technet.microsoft.com/en-us/library/cc737785.aspx>

QUESTION 5

Your network contains a server named Server1 that runs Windows Server 2008 R2. Server1 has the Remote Desktop Session Host (RD Session Host) role service installed. Server1 hosts RemoteApp programs.

Two hundred users connect to Server1 to run the RemoteApp programs.

You need to use Performance Monitor to view the CPU usage of each RemoteApp program.

Which Performance Monitor object should you monitor?



- A. Process
- B. Processor
- C. Terminal Services
- D. Terminal Services Session

Correct Answer: A

[70-643 PDF Dumps](#)

[70-643 Practice Test](#)

[70-643 Exam Questions](#)



To Read the [Whole Q&As](#), please purchase the [Complete Version](#) from [Our website](#).

Try our product !

100% Guaranteed Success

100% Money Back Guarantee

365 Days Free Update

Instant Download After Purchase

24x7 Customer Support

Average 99.9% Success Rate

More than 800,000 Satisfied Customers Worldwide

Multi-Platform capabilities - [Windows](#), [Mac](#), [Android](#), [iPhone](#), [iPod](#), [iPad](#), [Kindle](#)

We provide exam PDF and VCE of Cisco, Microsoft, IBM, CompTIA, Oracle and other IT Certifications. You can view Vendor list of All Certification Exams offered:

<https://www.pass4lead.com/allproducts>

Need Help

Please provide as much detail as possible so we can best assist you.

To update a previously submitted ticket:



 <p>One Year Free Update Free update is available within One Year after your purchase. After One Year, you will get 50% discounts for updating. And we are proud to boast a 24/7 efficient Customer Support system via Email.</p>	 <p>Money Back Guarantee To ensure that you are spending on quality products, we provide 100% money back guarantee for 30 days from the date of purchase.</p>	 <p>Security & Privacy We respect customer privacy. We use McAfee's security service to provide you with utmost security for your personal information & peace of mind.</p>
---	---	--

Any charges made through this site will appear as Global Simulators Limited.

All trademarks are the property of their respective owners.

Copyright © pass4lead, All Rights Reserved.