



70-647^{Q&As}

Windows Server 2008, Enterprise Administrator

Pass Microsoft 70-647 Exam with 100% Guarantee

Free Download Real Questions & Answers **PDF** and **VCE** file from:

<https://www.pass4lead.com/70-647.html>

100% Passing Guarantee
100% Money Back Assurance

Following Questions and Answers are all new published by Microsoft
Official Exam Center

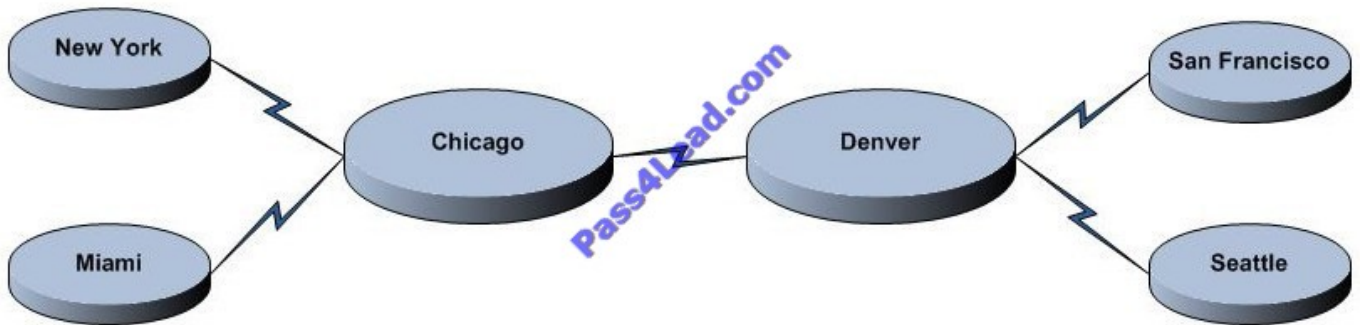
-  **Instant Download** After Purchase
-  **100% Money Back** Guarantee
-  **365 Days** Free Update
-  **800,000+** Satisfied Customers





QUESTION 1

Your company has two main offices in Denver and Chicago and four branch offices in New York, Miami, Seattle, and San Francisco. Each office is configured as an Active Directory site. Site links are configured as shown in the exhibit. (Click the Exhibit button.)



The network consists of one Active Directory forest. All domain controllers run Windows Server 2003. Each main office has four domain controllers. Each branch office has one domain controller. The Bridge all site links option is disabled. You need to prepare the environment to install a read-only domain controller (RODC) in each branch office. The solution must be achieved by upgrading the minimum number of domain controllers.

What should you do?

- A. Upgrade one domain controller in the Chicago office and one domain controller in the Denver office to Windows Server 2008.
- B. Upgrade one domain controllers in the Chicago office to Windows Server 2008. Create a site link that connects the Seattle and San Francisco office sites to the Chicago office site.
- C. Configure a site link to connect all branch office sites. Upgrade one domain controller in the Denver office to Windows Server 2008.
- D. Configure a site link to connect the Chicago office site and the San Francisco and Seattle office sites. Upgrade one domain controller in the Denver office to Windows Server 2008.

Correct Answer: B

To install a read-only domain controller (RODC) in each branch office to ensure that only minimum numbers of domain controllers are upgraded, you need to upgrade a single domain controller in both the New York office and Seattle office to Windows Server 2008.

This is because RODCs cannot be a source domain controller for any other domain controller because they cannot perform outbound replication. The placement of an RODC and writable domain controllers running Windows Server 2008 might be affected by the site topology and network constraints. Reference: Active Directory Replication Considerations <http://technet2.microsoft.com/windowsserver2008/en/library/e7caabff-3795-49fa-8338-bbe56e49eae41033.msp?mfr=true>

QUESTION 2

Your network consists of one Active Directory domain. You have a single site.



You deploy a new Active Directory-integrated application on a server that runs Windows Server 2008. The application sends a large number of LDAP queries to the domain controllers.

You plan to install a new domain controller to respond to the LDAP queries.

You need to reduce the number of authentication requests client computers send to the new domain controller.

What should you do?

- A. Create a new site and disable the Bridge all site links option.
- B. Create a new site. Move the application server and the new domain controller to the new site.
- C. Create a new organizational unit (OU). Move the application server and the new domain controller to the new OU.
- D. Create two new sites. Move the application server to one site and the new domain controller to another site. Create a new site link that connects the two sites.

Correct Answer: B

When the client receives the SRV records, it performs a quick LDAP ping to all of them by sending out a bind query to UDP port 389. The first domain controller to respond is selected as the primary LDAP server by the client.

You cannot configure a preferred domain controller for a client. If you have a large LAN and you want to compartmentalize your clients based on their area of a campus LAN or MAN (metropolitan area network), you must structure your replication topology around multiple sites. Therefore to reduce the number of authentication requests that the client computers would send to the new domain controller, you need to create a new site in the domain and then move the server on which application is installed and the new domain controller to the new site

Reference: Understanding Active Directory Services <http://www.windowsitlibrary.com/Content/716/06/5.html>

QUESTION 3

Your network consists of one Active Directory domain. The domain contains servers that run Windows Server 2008. The servers are configured as shown in the following table. (Click the Exhibit)

Server name	Server role
Server1	Network Policy and Access Services (NPAS)
Server2	Microsoft Windows SharePoint Services (WSS)
Server3	File Services

All client computers run Windows Vista Service Pack 1 (SP1). Remote domain users at a customer site report that they can access Server2 from the Internet by using the URL <https://portal.contoso.com>. They also report that a firewall at the customer site prevents all other outbound connections.

You need to implement a solution to enable remote users to access files on Server3 from a VPN connection.

Which connection should you enable on Server1?

- A. IPsec tunnel mode



- B. L2TP
- C. PPTP
- D. Secure Socket Tunneling Protocol (SSTP)

Correct Answer: D

To plan a solution that would allow the remote users using firewall on their remote locations to access files on Server3 through a VPN connection, you need to configure Secure Socket Tunneling Protocol (SSTP) connection. Before Windows Server 2008, all kinds of VPN connections such as PPTP L2TP, and IPsec had problems with firewalls, NATs, and Web proxies. To prevent problems, firewalls must be configured to allow connections. If your VPN client

computer is behind a NAT, both the VPN client and the VPN server must support IPsec NAT-Traversal (NAT-T). Besides, VPN server can't be located behind a NAT, and that L2TP/IPsec traffic can't flow through a Web proxy.

With the advent of SSTP in Windows Server 2008 all the VPN connectivity problems such as firewalls, NATs, and Web proxies are solved. The SSTP connection allows the use of HTTP over secure sockets layer (SSL). SSTP uses an HTTPover-SSL session between VPN clients and servers to exchange encapsulated IPv4 or IPv6 packets. Reference: The Cable Guy: The Secure Socket Tunneling Protocol / The New VPN Solution <http://technet.microsoft.com/en-us/magazine/cc162322.aspx>

QUESTION 4

Your network consists of one Active Directory forest that contains one root domain and 10 child domains.

Administrators of the child domains frequently modify the records for authoritative DNS servers for the child domain DNS zones. You need to recommend a solution to minimize the amount of manual configuration steps required to maintain

name resolution on the network.

What should you recommend?

- A. On the child domain DNS servers, create stub zones for the root domain zone.
- B. On the child domain DNS servers, configure conditional forwarders for the parent domain.
- C. On the root domain DNS servers, create stub zones for the child domain zones.
- D. On the root domain DNS servers, configure delegation subdomain records for the child domains.

Correct Answer: C

To implement a solution that would minimize the effort required to maintain name resolution on the network, you need to create stub zones for the child domain zones on the root domain DNS servers. Stub zones can help reduce the amount of DNS traffic on your network by streamlining name resolution and zone replication. The Stub zone should be configured for the child domain zones on the root domain DNS servers and not vice versa because a stub zone is like a secondary zone that obtains its resource records from other name servers (one or more master name servers).

Reference: DNS Stub Zones in Windows Server 2003
http://www.windowsnetworking.com/articles_tutorials/DNS_Stub_Zones.html



QUESTION 5

You need to recommend a technology to transition the company from IPv4 to IPv6. The technology must meet the company's technical requirements. Which transition technology should you recommend?

- A. 6 to 4
- B. Network Address Translation64 (NAT64)
- C. Intra-Site Automatic Tunnel Addressing Protocol (ISATAP)
- D. PortProxy

Correct Answer: C

[Latest 70-647 Dumps](#)

[70-647 Practice Test](#)

[70-647 Exam Questions](#)



To Read the [Whole Q&As](#), please purchase the [Complete Version](#) from [Our website](#).

Try our product !

100% Guaranteed Success

100% Money Back Guarantee

365 Days Free Update

Instant Download After Purchase

24x7 Customer Support

Average 99.9% Success Rate

More than 800,000 Satisfied Customers Worldwide

Multi-Platform capabilities - [Windows](#), [Mac](#), [Android](#), [iPhone](#), [iPod](#), [iPad](#), [Kindle](#)

We provide exam PDF and VCE of Cisco, Microsoft, IBM, CompTIA, Oracle and other IT Certifications. You can view Vendor list of All Certification Exams offered:

<https://www.pass4lead.com/allproducts>

Need Help

Please provide as much detail as possible so we can best assist you.

To update a previously submitted ticket:



 <p>One Year Free Update Free update is available within One Year after your purchase. After One Year, you will get 50% discounts for updating. And we are proud to boast a 24/7 efficient Customer Support system via Email.</p>	 <p>Money Back Guarantee To ensure that you are spending on quality products, we provide 100% money back guarantee for 30 days from the date of purchase.</p>	 <p>Security & Privacy We respect customer privacy. We use McAfee's security service to provide you with utmost security for your personal information & peace of mind.</p>
---	---	--

Any charges made through this site will appear as Global Simulators Limited.

All trademarks are the property of their respective owners.

Copyright © pass4lead, All Rights Reserved.