



70-649^{Q&As}

TS: Upgrading Your MCSE on Windows Server 2003 to Windows Server 2008, Technology Specialist

Pass Microsoft 70-649 Exam with 100% Guarantee

Free Download Real Questions & Answers **PDF** and **VCE** file from:

<https://www.pass4lead.com/70-649.html>

100% Passing Guarantee
100% Money Back Assurance

Following Questions and Answers are all new published by Microsoft Official Exam Center

-  **Instant Download** After Purchase
-  **100% Money Back** Guarantee
-  **365 Days** Free Update
-  **800,000+** Satisfied Customers





QUESTION 1

Your network contains an Active Directory domain named contoso.com. The network has DirectAccess deployed.

You deploy a new server named Server1 that hosts a management application.

You need to ensure that Server1 can initiate connections to DirectAccess client computers.

Which settings should you modify from the DirectAccess Setup console?

- A. Application Servers
- B. DirectAccess Server
- C. Infrastructure Servers
- D. Remote Clients

Correct Answer: C

Read the guide here: <http://blog.concurrency.com/infrastructure/uag-directaccess-infrastructure-servers-wizard/>

QUESTION 2

Your company uses Network Access Protection (NAP) to enforce policies on client computers that connect to the network.

Client computers run Windows 7. A Group Policy is used to configure client computers to obtain updates from Windows Server Update Services (WSUS).

Company policy requires that updates labeled Important and Critical must be applied before client computers can access network resources.

You need to ensure that client computers meet the company policy requirement.

What should you do?

- A. Enable automatic updates on each client.
- B. Enable the Security Center on each client.
- C. Quarantine clients that do not have all available security updates installed.
- D. Disconnect the connection until the required updates are installed.

Correct Answer: C

QUESTION 3

Your company has a main office and five branch offices. The branch offices connect to the main office by using a WAN link.



Each branch office has 100 client computers that run Windows XP or Windows Vista. All servers run Windows Server 2008 R2.

The main office has a Windows Server Update Services (WSUS) server.

You need to minimize the amount of WAN traffic used to download updates from the WSUS server.

What should you do?

- A. From a Group Policy, enable Allow BITS Peercaching.
- B. From Windows Explorer, enable Offline Files.
- C. From a Group Policy, enable the Set BranchCache Hosted Cache mode setting.
- D. From a Group Policy, enable the Set BranchCache Distributed Cache mode setting.

Correct Answer: A

Windows Update and Microsoft Update use the Background Intelligent Transfer Service (BITS) to download updates. You can optimize download performance by configuring BITS through Group Policy.

Peer caching is a feature of BITS that enables peer computers to share files. Peer computers are computers that have the peer caching feature enabled and that are located in the same subnet. If peer caching is enabled on a computer, Automatic Updates instructs BITS to make downloaded files available to the computer's peers. When updates are downloaded, BITS caches them. When another peer caching-enabled computer tries to download the same update, BITS sends a multicast request to all peers. If peer computers respond to the request, BITS downloads the file from the first peer computer to respond. If the download from the peer computer fails or takes too long, BITS continues the download from the WSUS server or from Microsoft Update.

Peer caching can optimize bandwidth in the following ways:

-

Decreases the data that is transferred from the WSUS server to client computers because computers in the same subnet will usually download the updates from each other.

-

Decreases the data that is transferred across the WAN when some or all of the client computers of a WSUS server are located in different locations.

-

Decreases the data that is transferred across the Internet if WSUS client computers that are located in the same subnet are configured to download updates from Microsoft Update. [http://technet.microsoft.com/en-us/library/dd939927\(v=ws.10\).aspx](http://technet.microsoft.com/en-us/library/dd939927(v=ws.10).aspx)

QUESTION 4

Your network contains a server that has the Remote Desktop Session Host (RD Session Host) role service installed.

You need to increase the bandwidth that is allocated for printing and for file transfers between the RD Session Host server and the Remote Desktop clients.



What should you do?

- A. On the server, modify the RDP-Tcp settings.
- B. On the server, modify the FlowControlChannelBandwidth registry setting.
- C. On the clients, modify the FlowControlDisplayBandwidth registry setting.
- D. On the clients, modify the Local Resources settings of the Remote Desktop connections.

Correct Answer: B

Display data prioritization

Display data prioritization automatically controls virtual channel traffic so that display, keyboard, and mouse data is given a higher priority over other virtual channel traffic, such as printing or file transfers. This prioritization is designed to

ensure that your screen performance is not adversely affected by bandwidth intensive actions, such as large print jobs.

The default bandwidth ratio is 70:30. Display and input data will be allocated 70 percent of the bandwidth, and all other traffic, such as clipboard, file transfers, or print jobs, will be allocated 30 percent of the bandwidth.

You can adjust the display data prioritization settings by making changes to the registry of the terminal server.

You can change the value of the following entries under the

HKEY_LOCAL_MACHINE\SYSTEM\CurrentControlSet\Services\TermDDsubkey:

FlowControlDisable

FlowControlDisplayBandwidth

FlowControlChannelBandwidth

FlowControlChargePostCompression

If these entries do not appear, you can add them. To do this, right-click TermDD, point to New, and then click

DWORD (32-bit) Value.

You can disable display data prioritization by setting the value of FlowControlDisable to 1. If display data prioritization is disabled, all requests are handled on a first-in-first-out basis.

The default value for FlowControlDisable is 0.

You can set the relative bandwidth priority for display (and input data) by setting the FlowControlDisplayBandwidth value.

The default value is 70; the maximum value allowed is 255. You can set the relative bandwidth priority for other virtual channels (such as clipboard, file transfers, or print jobs) by setting the FlowControlChannelBandwidth value. The default

value is 30; the maximum value allowed is 255. The bandwidth ratio for display data prioritization is based on the values of FlowControlDisplayBandwidth and FlowControlChannelBandwidth. For example, if FlowControlDisplayBandwidth is

set to 150 and FlowControlChannelBandwidth is set to 50, the ratio is 150:50, so display and input data will be allocated 75 percent of the bandwidth.



Source: [http://technet.microsoft.com/en-us/library/cc772472\(WS.10\).aspx](http://technet.microsoft.com/en-us/library/cc772472(WS.10).aspx)

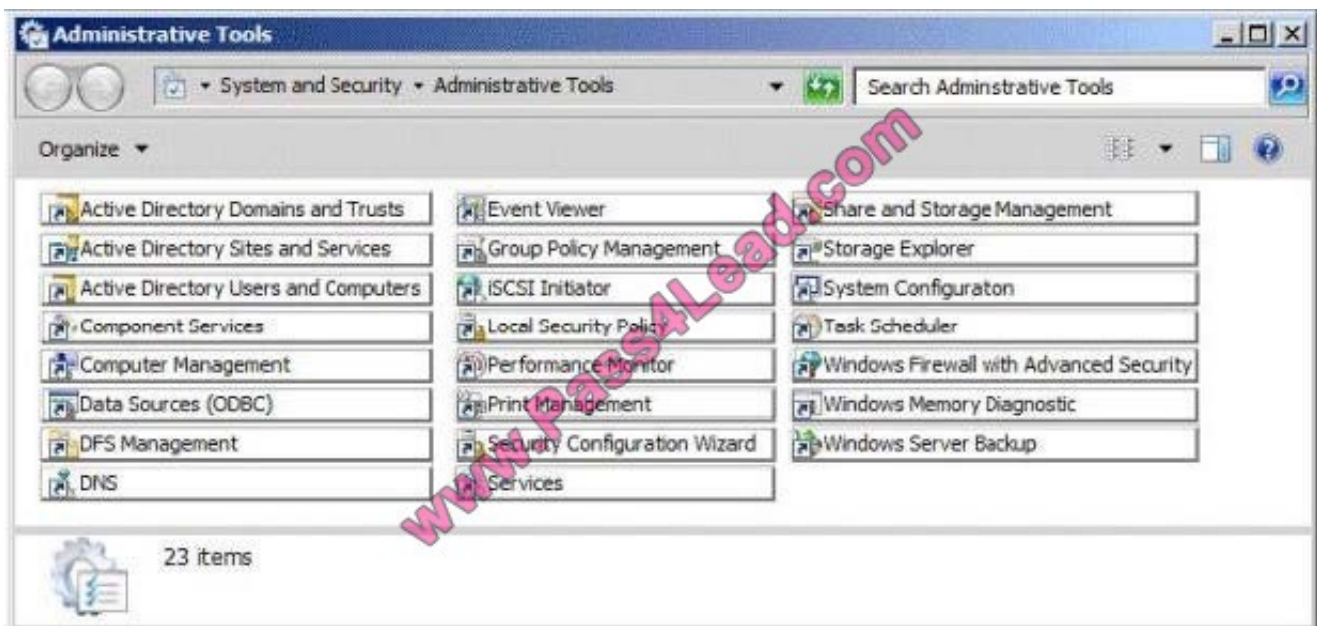
QUESTION 5

You need to modify the Password Replication Policy on a read-only domain controller (RODC).

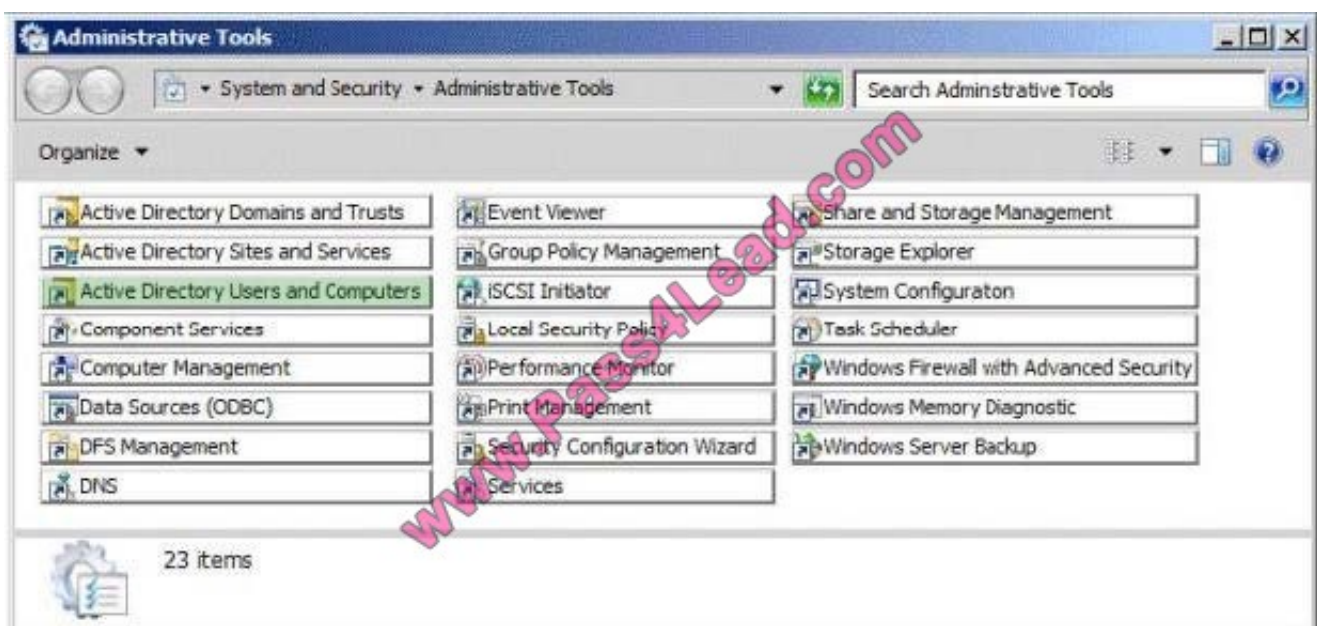
Which tool should you use?

To answer, select the appropriate tool in the answer area.

Hot Area:



Correct Answer:





VCE & PDF

Pass4Lead.com

<https://www.pass4lead.com/70-649.html>

2022 Latest pass4lead 70-649 PDF and VCE dumps Download

[Latest 70-649 Dumps](#)

[70-649 PDF Dumps](#)

[70-649 Practice Test](#)



To Read the [Whole Q&As](#), please purchase the [Complete Version](#) from [Our website](#).

Try our product !

100% Guaranteed Success

100% Money Back Guarantee

365 Days Free Update

Instant Download After Purchase

24x7 Customer Support

Average 99.9% Success Rate

More than 800,000 Satisfied Customers Worldwide

Multi-Platform capabilities - [Windows](#), [Mac](#), [Android](#), [iPhone](#), [iPod](#), [iPad](#), [Kindle](#)

We provide exam PDF and VCE of Cisco, Microsoft, IBM, CompTIA, Oracle and other IT Certifications. You can view Vendor list of All Certification Exams offered:

<https://www.pass4lead.com/allproducts>

Need Help

Please provide as much detail as possible so we can best assist you.

To update a previously submitted ticket:



| | | |
|---|---|--|
|  <p>One Year Free Update Free update is available within One Year after your purchase. After One Year, you will get 50% discounts for updating. And we are proud to boast a 24/7 efficient Customer Support system via Email.</p> |  <p>Money Back Guarantee To ensure that you are spending on quality products, we provide 100% money back guarantee for 30 days from the date of purchase.</p> |  <p>Security & Privacy We respect customer privacy. We use McAfee's security service to provide you with utmost security for your personal information & peace of mind.</p> |
|---|---|--|

Any charges made through this site will appear as Global Simulators Limited.

All trademarks are the property of their respective owners.

Copyright © pass4lead, All Rights Reserved.