



70-685^{Q&As}

Windows 7, Enterprise Desktop Support Technician

Pass Microsoft 70-685 Exam with 100% Guarantee

Free Download Real Questions & Answers **PDF** and **VCE** file from:

<https://www.pass4lead.com/70-685.html>

100% Passing Guarantee
100% Money Back Assurance

Following Questions and Answers are all new published by Microsoft
Official Exam Center

-  **Instant Download** After Purchase
-  **100% Money Back** Guarantee
-  **365 Days** Free Update
-  **800,000+** Satisfied Customers





QUESTION 1

A company has computers running Windows 7 Enterprise. All of the company's portable computers have been configured to use the Balanced power plan with the default plan settings.

The battery power of one user's portable computer drains much faster than other similar model portable computers.

You need to gather information from the user's portable computer to ascertain the cause of the battery power drain.

Which two actions should you perform in sequence?

(To answer, move the appropriate actions from the list of actions to the answer area and arrange them in the correct order.)

Select and Place:

Open an elevated command prompt.

Open a standard command prompt.

Run the **Power_Troubleshooter.ps1** script.

Run the **powercfg.ps1** script.

Run the **powercfg.exe - energy** command.

Run the **powercfg.exe - devicequery all_devices** command.

Correct Answer:

Open an elevated command prompt.

Run the **powercfg.exe - energy** command.



QUESTION 2

A company has computers running Windows 7 Enterprise. The company enforces AppLocker policies to prevent unwanted applications from running.

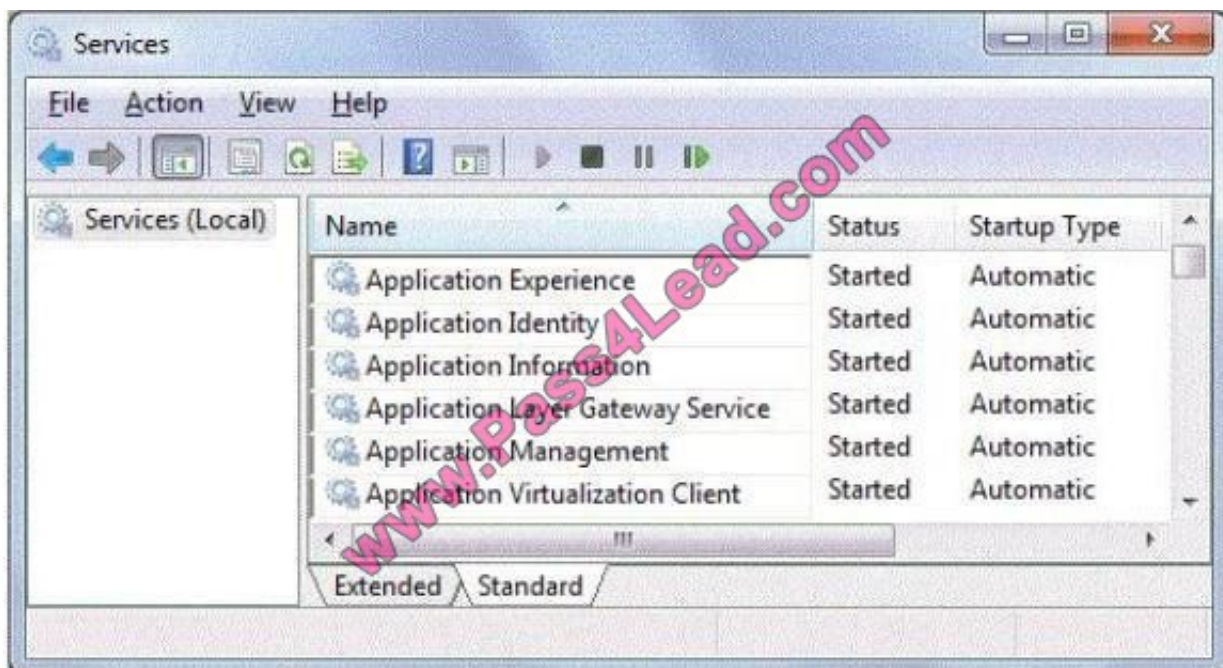
A user wants to evaluate an application, but is blocked by AppLocker policies.

You need to stop AppLocker policies from being enforced on the user's computer.

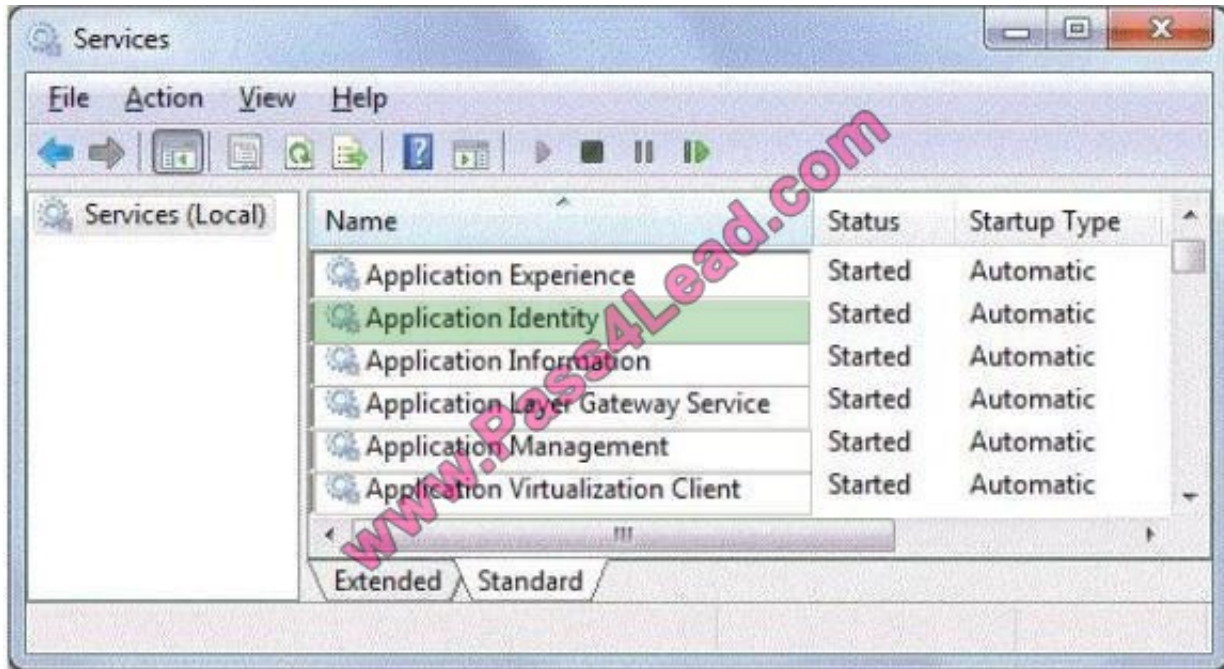
Which service should you disable to accomplish this goal?

To answer, select the appropriate service in the work area.

Point and Shoot:



Correct Answer:



QUESTION 3

All client computers on your company network run Windows 7. A computer is unable to connect to network resources. The configuration of the computer is as shown in the following table.

IP address	131.107.4.254
Subnet mask	255.255.240.0
Default gateway	131.107.15.255
Preferred DNS server	131.107.3.2

You need to ensure that the computer is able to connect to network resources. What should you do?

- A. Change the IP address to 131.107.3.254.
- B. Change the subnet mask to 255.255.248.0.
- C. Change the default gateway to 131.107.0.1.
- D. Change the preferred DNS server to 131.107.3.1.

Correct Answer: C

QUESTION 4

After you modify Corp GPO, users cannot log on to their computers.

You need to ensure that users can log on to their computers.



What should you do? (Choose all that apply.)

- A. Modify Corp GPO so that the default rules are created
- B. Log off the client computers and log back on
- C. Restart the client computers
- D. Modify Corp GPO so that all rules are deleted

Correct Answer: AC

Might be related to Exam B Question 12 Topic 13, Enterprise Company no sure about answer

QUESTION 5

A new client computer was joined recently to the company domain. However, it does not have the latest Windows updates installed.

You need to ensure that the client computer uses the company's enterprise update distribution servers to install the latest Windows updates immediately.

What should you do?

- A. Start the Windows Installer service.
- B. Run the wuauclt.exe /resetauthorization command.
- C. Run the wuauclt.exe /detectnow command.
- D. Run the net start TrustedInstaller command.

Correct Answer: C

[http://technet.microsoft.com/en-us/library/cc708617\(WS.10\).aspx](http://technet.microsoft.com/en-us/library/cc708617(WS.10).aspx)

[70-685 Study Guide](#)

[70-685 Exam Questions](#)

[70-685 Braindumps](#)



To Read the [Whole Q&As](#), please purchase the [Complete Version](#) from [Our website](#).

Try our product !

100% Guaranteed Success

100% Money Back Guarantee

365 Days Free Update

Instant Download After Purchase

24x7 Customer Support

Average 99.9% Success Rate

More than 800,000 Satisfied Customers Worldwide

Multi-Platform capabilities - [Windows](#), [Mac](#), [Android](#), [iPhone](#), [iPod](#), [iPad](#), [Kindle](#)

We provide exam PDF and VCE of Cisco, Microsoft, IBM, CompTIA, Oracle and other IT Certifications. You can view Vendor list of All Certification Exams offered:

<https://www.pass4lead.com/allproducts>

Need Help

Please provide as much detail as possible so we can best assist you.

To update a previously submitted ticket:



 <p>One Year Free Update Free update is available within One Year after your purchase. After One Year, you will get 50% discounts for updating. And we are proud to boast a 24/7 efficient Customer Support system via Email.</p>	 <p>Money Back Guarantee To ensure that you are spending on quality products, we provide 100% money back guarantee for 30 days from the date of purchase.</p>	 <p>Security & Privacy We respect customer privacy. We use McAfee's security service to provide you with utmost security for your personal information & peace of mind.</p>
---	---	--

Any charges made through this site will appear as Global Simulators Limited.

All trademarks are the property of their respective owners.

Copyright © pass4lead, All Rights Reserved.