



# 70-685<sup>Q&As</sup>

Windows 7, Enterprise Desktop Support Technician

## Pass Microsoft 70-685 Exam with 100% Guarantee

Free Download Real Questions & Answers **PDF** and **VCE** file from:

<https://www.pass4lead.com/70-685.html>

100% Passing Guarantee  
100% Money Back Assurance

Following Questions and Answers are all new published by Microsoft  
Official Exam Center

-  **Instant Download** After Purchase
-  **100% Money Back** Guarantee
-  **365 Days** Free Update
-  **800,000+** Satisfied Customers





### QUESTION 1

Users in branch office 1 report that they fail to access the company's intranet Web site located on Web1.

They also fail to access Web sites on the Internet. A desktop support technician restarts a desktop computer in branch office 1 and discovers the IP configuration shown in the following screenshot.

```
Ethernet adapter Local Area Connection:  
Connection-specific DNS Suffix . . . :  
Link-local IPv6 Address . . . . . : fe80::e0de:e445:f373:539c%11  
Autoconfiguration IPv4 Address. . . : 169.254.83.156  
Subnet Mask . . . . . : 255.255.0.0  
Default Gateway . . . . . :
```

You need to resolve the network connectivity issue. What are two possible ways to achieve this goal? (Each correct answer presents a complete solution. Choose two.)

- A. Instruct branch office 1 users to disable IPv6.
- B. Instruct branch office 1 users to run Ipconfig /Renew.
- C. Request that a network administrator configure the DHCP router option for branch office 1.
- D. Request that a network administrator verify DHCP broadcasts are being relayed to the main office.

Correct Answer: BD

Chapter 2 Lesson 1 p 68 Chapter 25 p 1218 Chapter 31 p 1562

### QUESTION 2

Your company has a branch office. The office has two 48-port network switches named Switch1 and Switch2. The company purchases several new computers that have identical hardware. The new computers run Windows 7.

The help desk reports that the new computers that connect to Switch1 are unable to connect to network resources and do not receive IP configurations from the DHCP server.

Existing computers that connect to Switch1 can access network resources. The new computers that connect to Switch2 can also access network resources.

You need to ensure that all computers can connect to network resources.

What should you do?

- A. Re-install the network card driver.
- B. Disable IPv6 on the network interface.
- C. Disable and then enable the network interface.
- D. Disable the AutoNegotiation setting on the network interface.

Correct Answer: D

**QUESTION 3**

Each day, 100 users in Office2 download a 5-MB product catalog file from a share on Server1.

The network administrator reports that the downloads cause an excessive load on the WAN link between Office1 and Office2.

You need to recommend a solution to minimize WAN utilization. The solution must not require that additional servers be deployed.

What should you recommend?

- A. BranchCache in distributed cache mode
- B. BranchCache in hosted cache mode
- C. Distributed File System Replication (DFSR)
- D. File Server Resource Management (FSRM)

Correct Answer: A

---

**QUESTION 4**

All client computers on your company network were recently migrated from Windows XP to Windows 7.

Your company uses a proprietary application that is currently not compatible with Windows 7. A shim has been created and applied to mitigate compatibility issues until a Windows 7-compatible version is developed.

A security update is made for this application. The update must be tested and then deployed as a new version of the application.

During testing you are unable to install the application.

You need to ensure that the application can be installed in the test environment before it can be deployed to the production environment.

What should you do?

- A. Disable UAC prompts.
- B. Run the .msi file from an elevated command prompt.
- C. Modify the shim to apply to all versions of the application.
- D. Modify the shim to apply only to the new version of the application.

Correct Answer: D

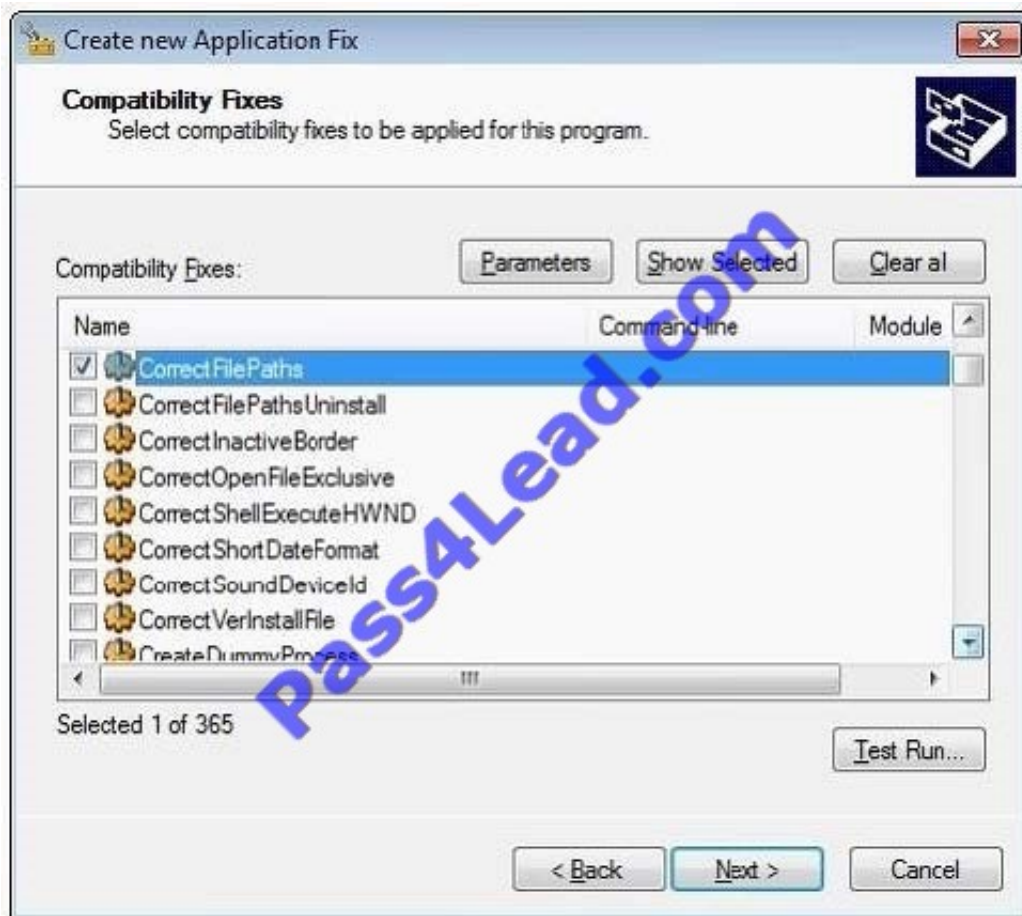
answer is D. Different software versions require different shims.

[http://blogs.msdn.com/b/chinmay\\_palei/archive/2011/01/16/windows-7-application-compatibility-issues-fixcentre.aspx](http://blogs.msdn.com/b/chinmay_palei/archive/2011/01/16/windows-7-application-compatibility-issues-fixcentre.aspx)

---



[http://technet.microsoft.com/en-us/library/dd837645\(v=ws.10\).aspx](http://technet.microsoft.com/en-us/library/dd837645(v=ws.10).aspx)



### QUESTION 5

All client computers on your company network run Windows 7 and are members of an Active Directory Domain Services domain.

AppLocker is configured to allow only approved applications to run.

Employees with standard user account permissions are able to run applications that install into the user profile folder.

You need to prevent standard users from running unauthorized applications.

What should you do?

- A. Create Executable Rules by selecting the Create Default Rules option.
- B. Create Windows Installer Rules by selecting the Create Default Rules option.
- C. Create the following Windows Installer Rule: Deny Everyone - %OSDRIVE%\Users\Downloads\\*
- D. Create the following Executable Rule: Deny - Everyone - %OSDRIVE%\Users\Documents\\*

Correct Answer: A



A. Create Executable Rules by selecting the Create Default Rules option. Many organizations are implementing standard user policies, which allow users to log on to their computers only as a standard user. With Windows Vista? this task became easier. However, more independent software vendors (ISVs) are creating per- user applications that do not require administrative rights to be installed and that are installed and run in the user profile folder. As a result, standard users can install many applications and circumvent the application lockdown policy. With AppLocker, you can prevent users from installing and running per-user applications. To prevent standard users from running per-user: To open the Local Security Policy MMC snap-in, click Start, type secpol.msc in the Search programs and files box, and then press ENTER. In the console tree, double-click Application Control Policies, and then double-click AppLocker. Right-click Executable Rules, and then click Create Default Rules. [http://technet.microsoft.com/en-us/library/dd723685\(WS.10\).aspx](http://technet.microsoft.com/en-us/library/dd723685(WS.10).aspx)

[70-685 PDF Dumps](#)

[70-685 Practice Test](#)

[70-685 Exam Questions](#)



To Read the [Whole Q&As](#), please purchase the [Complete Version](#) from [Our website](#).

## Try our product !

100% Guaranteed Success

100% Money Back Guarantee

365 Days Free Update

Instant Download After Purchase

24x7 Customer Support

Average 99.9% Success Rate

More than 800,000 Satisfied Customers Worldwide

Multi-Platform capabilities - [Windows](#), [Mac](#), [Android](#), [iPhone](#), [iPod](#), [iPad](#), [Kindle](#)

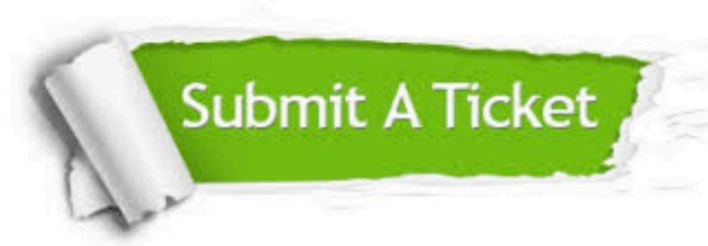
We provide exam PDF and VCE of Cisco, Microsoft, IBM, CompTIA, Oracle and other IT Certifications. You can view Vendor list of All Certification Exams offered:

<https://www.pass4lead.com/allproducts>

## Need Help

Please provide as much detail as possible so we can best assist you.

To update a previously submitted ticket:



 <p><b>One Year Free Update</b> Free update is available within One Year after your purchase. After One Year, you will get 50% discounts for updating. And we are proud to boast a 24/7 efficient Customer Support system via Email.</p>	 <p><b>Money Back Guarantee</b> To ensure that you are spending on quality products, we provide 100% money back guarantee for 30 days from the date of purchase.</p>	 <p><b>Security &amp; Privacy</b> We respect customer privacy. We use McAfee's security service to provide you with utmost security for your personal information &amp; peace of mind.</p>
---	---	--

Any charges made through this site will appear as Global Simulators Limited.

All trademarks are the property of their respective owners.

Copyright © pass4lead, All Rights Reserved.