



# 70-685<sup>Q&As</sup>

Windows 7, Enterprise Desktop Support Technician

## Pass Microsoft 70-685 Exam with 100% Guarantee

Free Download Real Questions & Answers **PDF** and **VCE** file from:

<https://www.pass4lead.com/70-685.html>

100% Passing Guarantee  
100% Money Back Assurance

Following Questions and Answers are all new published by Microsoft  
Official Exam Center

-  **Instant Download** After Purchase
-  **100% Money Back** Guarantee
-  **365 Days** Free Update
-  **800,000+** Satisfied Customers





### QUESTION 1

All client computers on your company network run Windows 7. An employee installs several new applications on a computer.

After the applications are installed, the computer takes longer to start.

You need to reduce the startup process time.

What should you do?

- A. Run the msconfig tool.
- B. Run the bcdedit command.
- C. Use the Services console to stop the applications.
- D. Use the Task Manager tool to stop the applications.

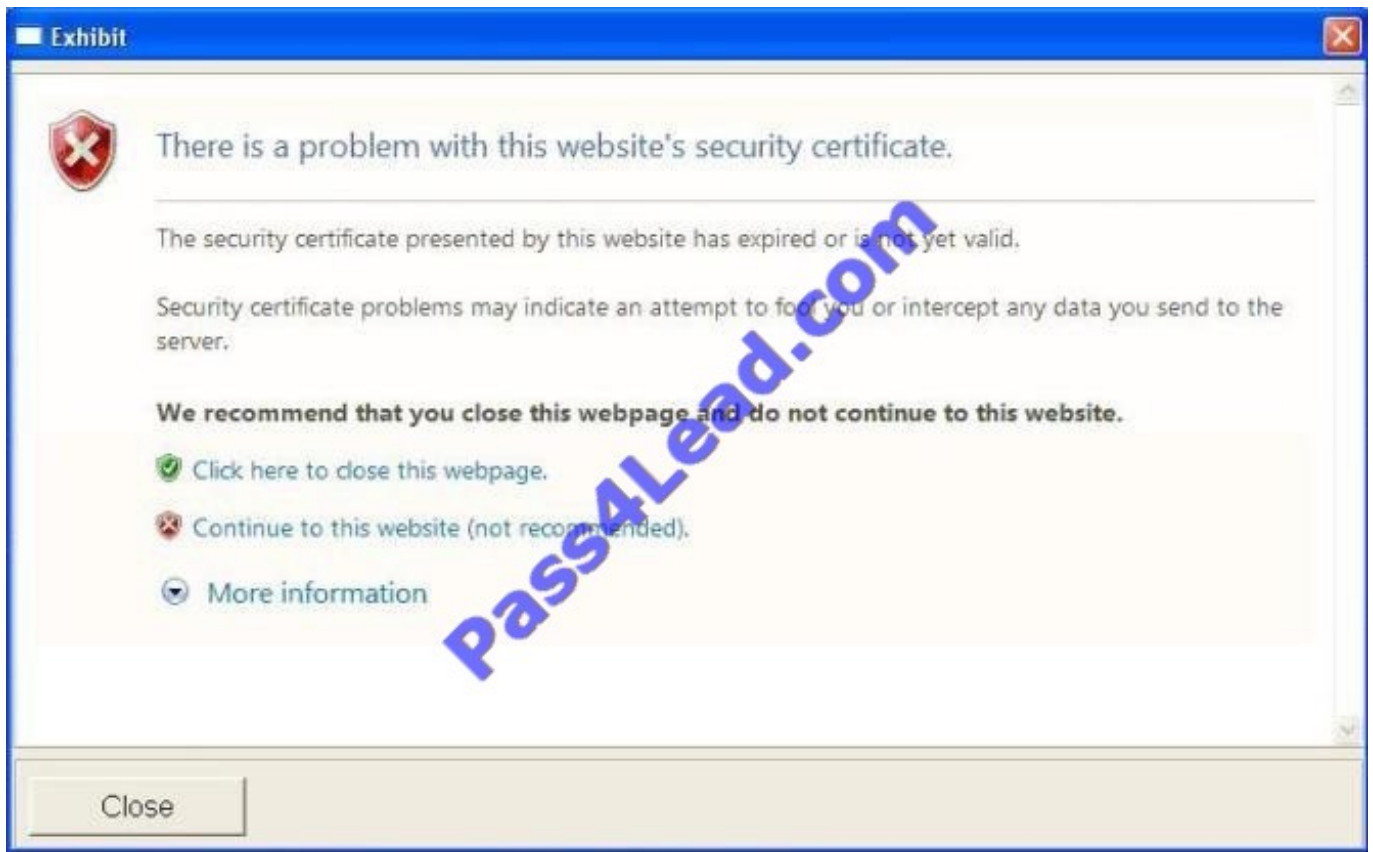
Correct Answer: A

<http://www.youtube.com/watch?v=Wm3TUTmXZcQ>



### QUESTION 2

The help desk reports that users receive a security warning message when they try to access the internal Web site shown in the exhibit. (Click the Exhibit button.)



The help desk confirms that users never received this security warning message before. You need to provide a solution to prevent users from receiving the security warning when they try to access the internal Web site.

What should you do?

- A. Instruct the users to download the certificate of the Web server.
- B. Instruct the users to download a new certificate revocation list (CRL).
- C. Request that a domain administrator renew the Web server SSL certificate.
- D. Request that a domain administrator renew the user authentication certificates for all users.

Correct Answer: C

### QUESTION 3

All client computers on your company network run Windows 7 and are members of an Active Directory Domain Services domain.

All portable computers connect only to the 802.1X-authenticated wireless network. Wireless settings are set through the domain's Group Policy. You discover that new portable computers cannot be joined to the domain.

You need to ensure that new portable computers can be joined to the domain.



What should you do?

- A. Connect the portable computers to the wireless network by using a Bootstrap Profile.
- B. Connect the portable computers to the wireless network by using a Non-Broadcast Profile.
- C. Connect the portable computers to the domain by using smart card authentication.
- D. Connect the portable computers to the domain by using network security key authentication.

Correct Answer: A

---

#### QUESTION 4

A company has new portable computers running Windows 7.

On one of the computers, the USB mouse cursor does not move. You connect the mouse to another computer, where it works correctly.

You need to recommend possible solutions to the problem. What should you recommend? (Choose all that apply.)

- A. Connect the mouse into a different USB port.
- B. Enable the USB controller in the BIOS.
- C. Disable the computer's trackpad.
- D. Disable Hot Keys on the computer.
- E. Turn on Mouse Keys.

Correct Answer: ABC

---

#### QUESTION 5

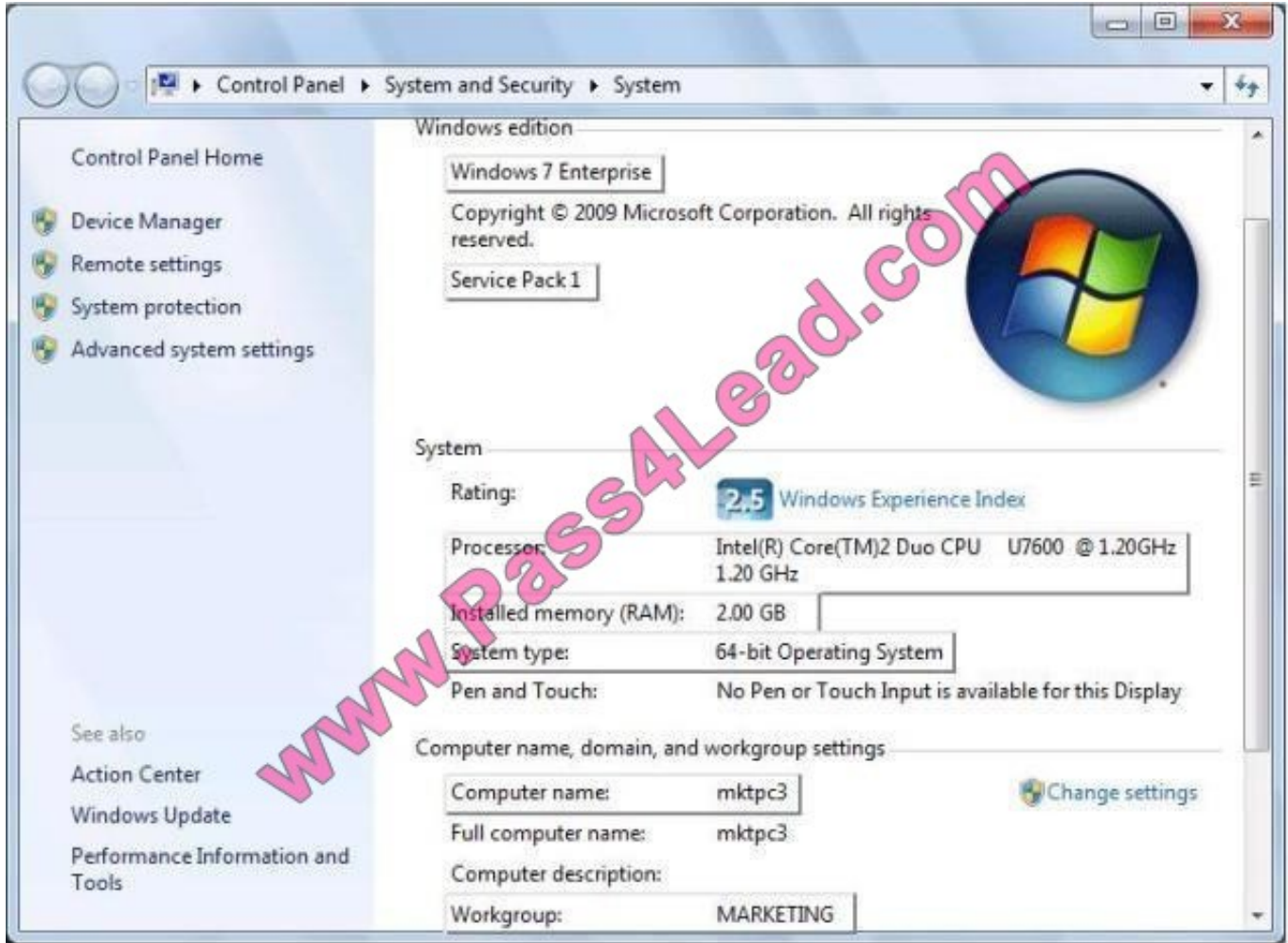
A company has client computers that run Windows 7 Enterprise. Servers run Windows Server 2008 R2 in an Active Directory Domain Services (AD DS) environment. A server runs the company's intranet site. Remote access is provided by using DirectAccess.

A user wants to access the intranet site remotely.

You need to ensure that the user's computer meets the requirements to use DirectAccess.

What should you upgrade or configure? To answer, select the appropriate area in the work area

Point and Shoot:



Correct Answer:



[70-685 PDF Dumps](#)

[70-685 VCE Dumps](#)

[70-685 Exam Questions](#)



To Read the [Whole Q&As](#), please purchase the [Complete Version](#) from [Our website](#).

## Try our product !

100% Guaranteed Success

100% Money Back Guarantee

365 Days Free Update

Instant Download After Purchase

24x7 Customer Support

Average 99.9% Success Rate

More than 800,000 Satisfied Customers Worldwide

Multi-Platform capabilities - [Windows](#), [Mac](#), [Android](#), [iPhone](#), [iPod](#), [iPad](#), [Kindle](#)

We provide exam PDF and VCE of Cisco, Microsoft, IBM, CompTIA, Oracle and other IT Certifications. You can view Vendor list of All Certification Exams offered:

<https://www.pass4lead.com/allproducts>

## Need Help

Please provide as much detail as possible so we can best assist you.

To update a previously submitted ticket:



 <p><b>One Year Free Update</b> Free update is available within One Year after your purchase. After One Year, you will get 50% discounts for updating. And we are proud to boast a 24/7 efficient Customer Support system via Email.</p>	 <p><b>Money Back Guarantee</b> To ensure that you are spending on quality products, we provide 100% money back guarantee for 30 days from the date of purchase.</p>	 <p><b>Security &amp; Privacy</b> We respect customer privacy. We use McAfee's security service to provide you with utmost security for your personal information &amp; peace of mind.</p>
---	---	--

Any charges made through this site will appear as Global Simulators Limited.

All trademarks are the property of their respective owners.

Copyright © pass4lead, All Rights Reserved.