



70-686^{Q&As}

Windows 7, Enterprise Desktop Administrator

Pass Microsoft 70-686 Exam with 100% Guarantee

Free Download Real Questions & Answers **PDF** and **VCE** file from:

<https://www.pass4lead.com/70-686.html>

100% Passing Guarantee
100% Money Back Assurance

Following Questions and Answers are all new published by Microsoft
Official Exam Center

-  **Instant Download** After Purchase
-  **100% Money Back** Guarantee
-  **365 Days** Free Update
-  **800,000+** Satisfied Customers





QUESTION 1

Your network has client computers that run Windows 7. A custom Web-based application requires specific security settings. You need to prevent users from permanently modifying their Internet Explorer browsers security settings. What should you do?

- A. Reset the Internet Explorer settings
- B. Restore the advanced settings in Internet Explorer
- C. Use Windows Internet Explorer Maintenance (IEM) extension settings in Preference mode
- D. Use Windows Internet Explorer Maintenance (IEM) extension settings in Normal mode

Correct Answer: D

Normal mode, you can configure IEM settings so that they are refreshed on users' computers on a periodic basis (or each time the users log in). However, users can temporarily change these settings between the times scheduled for their setting refresh. For this reason, these settings in Normal mode behave as "pseudo-policies." In Preference mode, you can configure IEM settings, but allow users to change these settings later by using the Internet Explorer 9 user interface. <http://technet.microsoft.com/en-us/library/gg699413.aspx>

QUESTION 2

A company network includes Windows 7 client computers and DirectAccess.

When using DirectAccess, users cannot connect to the company's internal resources.

You need to create a batch file that users can execute to trace all network traffic for DirectAccess from their home computers.

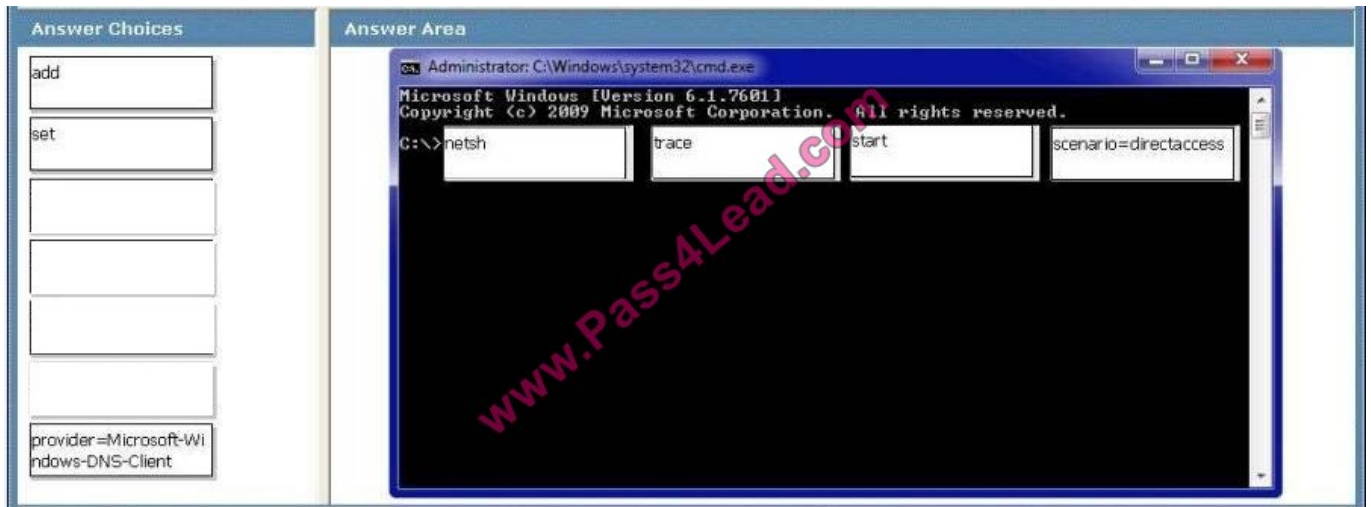
Which command should you use? To answer, drag the appropriate terms from the list of terms to the correct location or locations in the work area.

Select and Place:

The screenshot shows a drag-and-drop interface for a question. On the left, under "Answer Choices", there are seven text boxes containing the following text: "add", "set", "start", "trace", "netsh", "scenario=directaccess", and "provider=Microsoft-Windows-DNS-Client". On the right, under "Answer Area", there is a screenshot of a Windows command prompt window titled "Administrator: C:\Windows\system32\cmd.exe". The command prompt shows the text: "Microsoft Windows [Version 6.1.7601] Copyright (c) 2009 Microsoft Corporation. All rights reserved. C:\>". Below the command prompt, there are four empty rectangular boxes for placing the answer. A large red watermark "www.Pass4Lead.com" is overlaid diagonally across the command prompt area.



Correct Answer:



QUESTION 3

All client computers in your network run Windows 7 with default firewall settings. You have a server-based application that requires an agent to be installed on all client computers.

You need to use Group Policy to allow the application to initiate installation of the agent on all client computers.

What should you do?

- A. Create inbound program rules.
- B. Create inbound port rules.
- C. Create Windows service hardening rules.
- D. Create connection security rules.

Correct Answer: B

hints:

software haven't install, so unable to block program

QUESTION 4

You deploy Windows 7 Enterprise to 1,000 client computers by using an image file. You need to define an image update strategy to incorporate software updates. What should you do?

- A. Install the deployment image on a client computer. Run the update package on the client computer, run Sysprep, and then recapture the image.
- B. Append a disk volume that contains the update to the deployment image.



C. Mount the deployment image on a client computer that runs Windows 7. Run the update package on the client computer.

D. Install the deployment image on a client computer. Run the update package on the client computer, run BCDedit, and then recapture the image.

Correct Answer: A

hints: incorporate software updates = update image online Sysprep is needed before capture image.

QUESTION 5

You use Group Policy to standardize Internet Explorer settings on Windows 7 client computers. Users occasionally change the Internet Explorer settings on individual client computers. What should you do?

A. Use Group Policy to disable the Advanced tab of the Internet Explorer Properties dialog box.

B. Use the Group Policy Update utility to refresh Group Policy.

C. Enable Internet Explorer Maintenance Policy Processing in Group Policy.

D. Enable User Group Policy loopback processing mode.

Correct Answer: C

Internet Explorer Maintenance policy processing

This policy affects all policies that use the Internet Explorer Maintenance component of Group Policy, such as those in Windows Settings\Internet Explorer Maintenance. It overrides customized settings that the program implementing the

Internet Explorer Maintenance policy set when it was installed.

If you enable this policy, you can use the check boxes provided to change the options. Allow processing across a slow network connection updates the policies even when the update is being transmitted across a slow network connection,

such as a telephone line. Updates across slow connections can cause significant delays. Do not apply during periodic background processing prevents the system from updating affected policies in the background while the computer is in

use. Background updates can disrupt the user, cause a program to stop or operate abnormally, and, in rare cases, damage data.

Process even if the Group Policy objects have not changed updates and reapplies the policies even if the policies have not changed. Many policy implementations specify that they are updated only when changed.

However, you might want to update unchanged policies, such as reapplying a desired setting in case a user has changed it.

<http://technet.microsoft.com/en-us/library/cc978526.aspx>

[70-686 PDF Dumps](#)

[70-686 Practice Test](#)

[70-686 Braindumps](#)



To Read the [Whole Q&As](#), please purchase the [Complete Version](#) from [Our website](#).

Try our product !

100% Guaranteed Success

100% Money Back Guarantee

365 Days Free Update

Instant Download After Purchase

24x7 Customer Support

Average 99.9% Success Rate

More than 800,000 Satisfied Customers Worldwide

Multi-Platform capabilities - [Windows](#), [Mac](#), [Android](#), [iPhone](#), [iPod](#), [iPad](#), [Kindle](#)

We provide exam PDF and VCE of Cisco, Microsoft, IBM, CompTIA, Oracle and other IT Certifications. You can view Vendor list of All Certification Exams offered:

<https://www.pass4lead.com/allproducts>

Need Help

Please provide as much detail as possible so we can best assist you.

To update a previously submitted ticket:



 <p>One Year Free Update Free update is available within One Year after your purchase. After One Year, you will get 50% discounts for updating. And we are proud to boast a 24/7 efficient Customer Support system via Email.</p>	 <p>Money Back Guarantee To ensure that you are spending on quality products, we provide 100% money back guarantee for 30 days from the date of purchase.</p>	 <p>Security & Privacy We respect customer privacy. We use McAfee's security service to provide you with utmost security for your personal information & peace of mind.</p>
---	---	--

Any charges made through this site will appear as Global Simulators Limited.

All trademarks are the property of their respective owners.

Copyright © pass4lead, All Rights Reserved.