



# 70-688<sup>Q&As</sup>

Supporting Windows 8.1

## Pass Microsoft 70-688 Exam with 100% Guarantee

Free Download Real Questions & Answers **PDF** and **VCE** file from:

<https://www.pass4lead.com/70-688.html>

100% Passing Guarantee  
100% Money Back Assurance

Following Questions and Answers are all new published by Microsoft  
Official Exam Center

-  **Instant Download** After Purchase
-  **100% Money Back** Guarantee
-  **365 Days** Free Update
-  **800,000+** Satisfied Customers



**QUESTION 1**

You administer Windows 8.1 Enterprise computers in an Active Directory domain. Your company has purchased a subscription to Windows Intune. You are assigned as a Global Administrator for Intune.

You determine that a company employee who works at the help desk requires the following permissions:

Manage support tickets

Manage subscriptions

You need to assign the appropriate administrative role to the employee.

Which role should you assign to the help desk employee?

- A. User Management Administrator
- B. Password Administrator
- C. Billing Administrator
- D. Service Administrator

Correct Answer: D

Explanation: People with Intune administrator roles (including tenant administrators and service administrators) are the only ones in your organization who are authorized to access the Intune Administration console and to communicate directly with Microsoft about Intune service requests. Reference: Microsoft Intune support

---

**QUESTION 2**

You use a desktop computer and a laptop, both of which run Windows 8. You use a Microsoft account to log on to the desktop computer and a local user account to log on to the laptop. The desktop computer is joined to the HomeGroup and

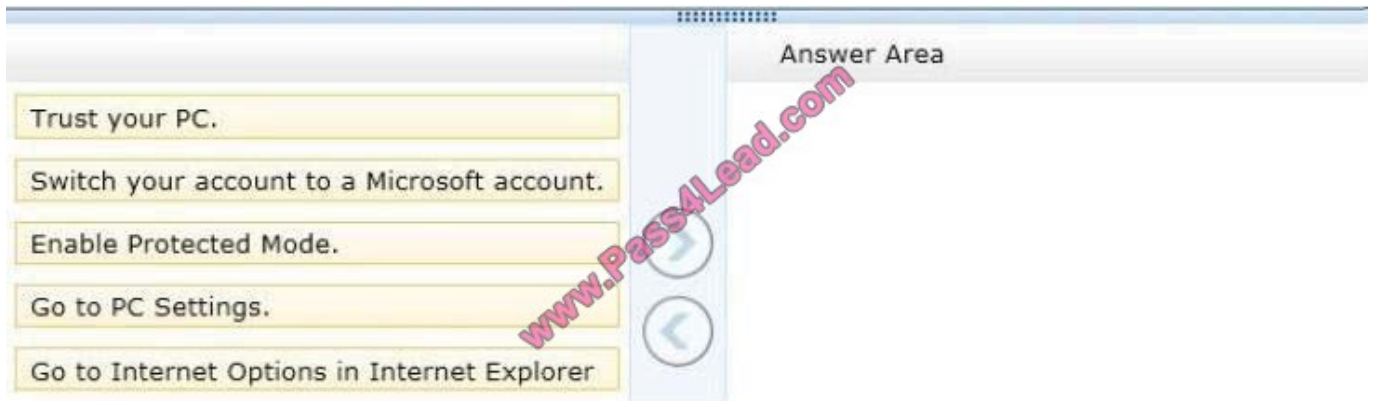
the laptop is a member of a workgroup.

When you access a frequently visited website from your laptop, Internet Explorer saves your password. When you visit the website from your desktop computer, you are prompted to enter your password.

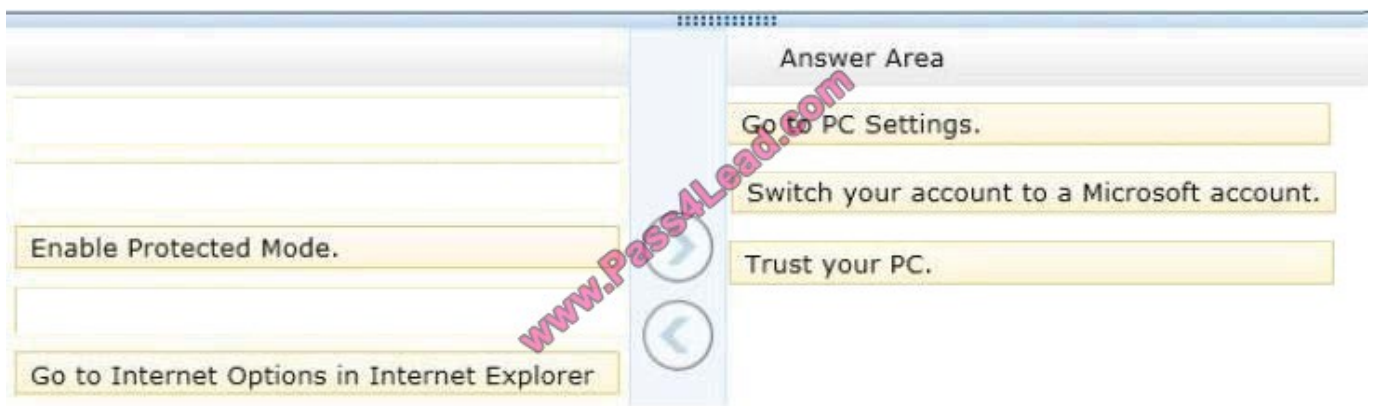
You need to sync your saved password from your laptop to your desktop computer.

Which three actions should you perform on the laptop in sequence? (To answer, move the appropriate actions from the list of actions to the answer area and arrange them in the correct order.)

Select and Place: Select and Place:



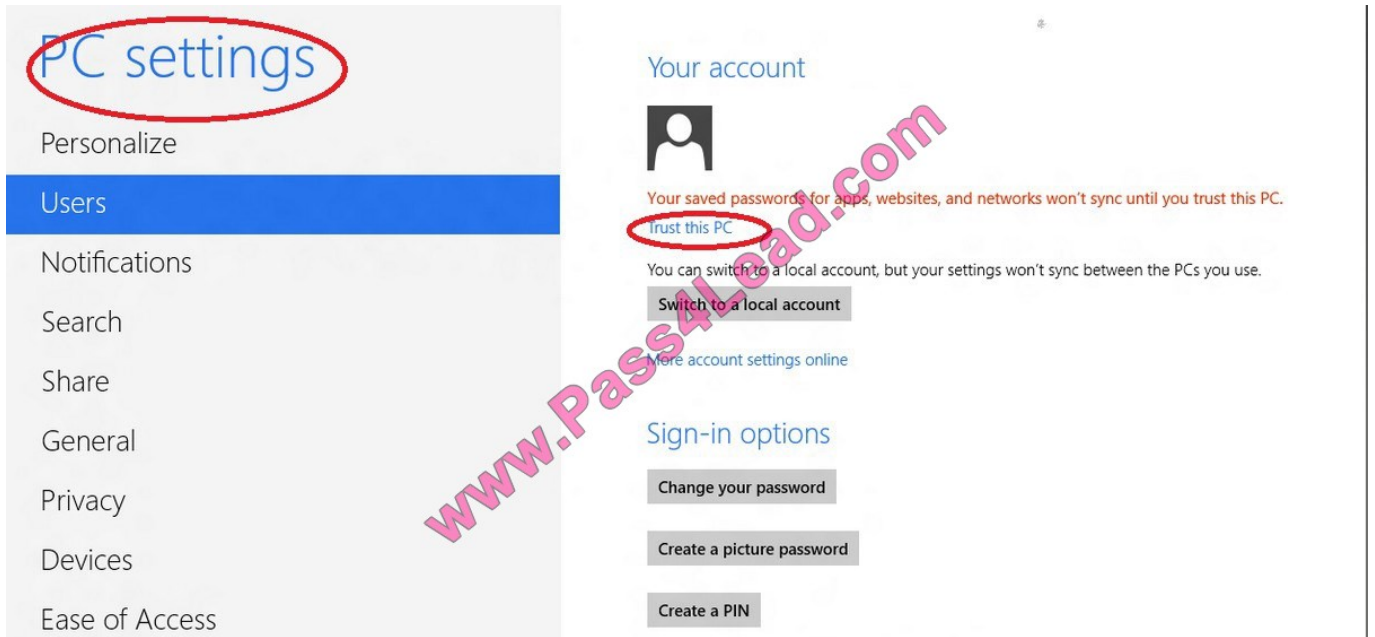
Correct Answer:



Note:

\* Microsoft has integrated its cloud computing features into much of Windows 8. The focal point of that integration is the soon to be re-branded Windows Live service—use a Windows Live account as your login, and you can synchronize much of the information associated with your account to all your Windows devices through the cloud. Or at least, that's the goal.

\* Setting up for synchronization starts when you configure your user account. At installation, Windows 8 prompts you for a Windows Live account. You can create a new Live account or use an existing one for your user credentials, or choose to bypass this and set up a local-only user account—but you won't be able to leverage the synchronization features if you do. You can also opt out later and switch to a local-only account through Windows 8's settings menu.



When you set up your user account—either at install time or from the PC settings menu afterward—you'll be prompted to either use an existing Live account email address or enter a new one

<http://technet.microsoft.com/en-us/windowsserver/bb250462%28v=vs.71%29.aspx>

### QUESTION 3

You support a computer that runs Windows 8 Enterprise.

You want to create a dual-boot configuration by using the native boot virtual hard disk (VHD) method.

You need to create an alternate Windows 8 installation.

Which three actions should you perform in sequence? (To answer, move the appropriate actions from the list of actions to the answer area and arrange them in the correct order.)

Select and Place:



	Answer Area
Update the system partition by using the Bootrec tool, and then modify the boot menu by using the BCDedit tool.	
Update the system partition by using the BCDedit tool, and then modify the boot menu by using the Bootrec tool.	
Install Windows 8 into a virtual hard disk (VHD) file.	
Edit the boot configuration by using the BCDedit tool on the virtual hard disk (VHD).	
Use the Computer Management console to create a virtual hard disk (VHD) file, and then create an active primary partition.	
Use Windows System Image Manager to create a virtual hard disk (VHD) file, and then create an active primary partition.	
Edit the boot configuration by using the BCDedit tool on the original Windows 8 installation.	

Correct Answer:

	Answer Area
Update the system partition by using the Bootrec tool, and then modify the boot menu by using the BCDedit tool.	Use Windows System Image Manager to create a virtual hard disk (VHD) file, and then create an active primary partition.
Update the system partition by using the BCDedit tool, and then modify the boot menu by using the Bootrec tool.	Install Windows 8 into a virtual hard disk (VHD) file.
	Edit the boot configuration by using the BCDedit tool on the original Windows 8 installation.
Edit the boot configuration by using the BCDedit tool on the virtual hard disk (VHD).	
Use the Computer Management console to create a virtual hard disk (VHD) file, and then create an active primary partition.	

<http://social.technet.microsoft.com/Forums/en-US/dc60933c-990b-45b1-943ea7cd11c48fc5/windows-7-and-windows-8-dual-boot-activation-problems?forum=w7itproinstall>

**QUESTION 4**





Your network contains an Active Directory domain. The domain contains 100 Windows 8.1 client computers. All of the computers secure all connections to computers on the internal network by using IPsec.

The network contains a server that runs a legacy application. The server does NOT support IPsec.

You need to ensure that some of the Windows 8 computers can connect to the legacy server. The solution must ensure that all other connections are secured by using IPsec.

What should you do?

- A. Modify the settings of the Domain Profile.
- B. Create a connection security rule.
- C. Create an inbound firewall rule.
- D. Modify the settings of the Private Profile,

Correct Answer: A

there are three profiles for Windows Firewall with Advanced Security:

Profile Description Domain Applied to a network adapter when it is connected to a network on which it can detect a domain controller of the domain to which the computer is joined. Private Applied to a network adapter when it is connected to a network that is identified by the user or administrator as a private network. A private network is one that is not connected directly to the Internet, but is behind some kind of security device, such as a network address translation (NAT) router or hardware firewall. For example, this could be a home network, or a business network that does not include a domain controller. The Private profile settings should be more restrictive than the Domain profile settings. Public Applied to a network adapter when it is connected to a public network such as those available in airports and coffee shops. When the profile is not set to Domain or Private, the default profile is Public. The Public profile settings should be the most restrictive because the computer is connected to a public network where the security cannot be controlled. For example, a program that accepts inbound connections from the Internet (like a file sharing program) may not work in the Public profile because the Windows Firewall default setting will block all inbound connections to programs that are not on the list of allowed programs. Each network adapter is assigned the firewall profile that matches the detected network type.

<http://technet.microsoft.com/en-us/library/getting-started-wfas-firewall-profiles-ipsec%28v=ws.10%29.aspx>

---

## QUESTION 5

Your network contains an Active Directory domain named contoso.com. All client computers run Windows 8.1 and Microsoft Office 2013. All of the computers are joined to the domain.

Your company purchases a subscription to Office 365. An administrator creates an Office 365 account for each user and deploys a federated solution for Office 365.

You need to prevent the users from being prompted for a user account and a password each time they access services from Office 365.

Which account should you instruct the users to use when they sign in to their computer?

- A. A contoso.com account
- B. A Microsoft account



C. An Office 365 account

D. A local user account

Correct Answer: B

Explanation: Office 2013 users can sign in by using either of two types of credentials:

Microsoft account, or Organization or School. The second type of credential is the user ID that is assigned by the organization or school for the purpose of accessing Office 365.

Reference: Configure user sign-in for Office 2013

[70-688 PDF Dumps](#)

[70-688 VCE Dumps](#)

[70-688 Practice Test](#)



To Read the [Whole Q&As](#), please purchase the [Complete Version](#) from [Our website](#).

## Try our product !

100% Guaranteed Success

100% Money Back Guarantee

365 Days Free Update

Instant Download After Purchase

24x7 Customer Support

Average 99.9% Success Rate

More than 800,000 Satisfied Customers Worldwide

Multi-Platform capabilities - [Windows](#), [Mac](#), [Android](#), [iPhone](#), [iPod](#), [iPad](#), [Kindle](#)

We provide exam PDF and VCE of Cisco, Microsoft, IBM, CompTIA, Oracle and other IT Certifications. You can view Vendor list of All Certification Exams offered:

<https://www.pass4lead.com/allproducts>

## Need Help

Please provide as much detail as possible so we can best assist you.

To update a previously submitted ticket:



 <p><b>One Year Free Update</b> Free update is available within One Year after your purchase. After One Year, you will get 50% discounts for updating. And we are proud to boast a 24/7 efficient Customer Support system via Email.</p>	 <p><b>Money Back Guarantee</b> To ensure that you are spending on quality products, we provide 100% money back guarantee for 30 days from the date of purchase.</p>	 <p><b>Security &amp; Privacy</b> We respect customer privacy. We use McAfee's security service to provide you with utmost security for your personal information &amp; peace of mind.</p>
---	---	--

Any charges made through this site will appear as Global Simulators Limited.

All trademarks are the property of their respective owners.

Copyright © pass4lead, All Rights Reserved.