



70-689^{Q&As}

Upgrading Your Skills to MCSA Windows 8

Pass Microsoft 70-689 Exam with 100% Guarantee

Free Download Real Questions & Answers **PDF** and **VCE** file from:

<https://www.pass4lead.com/70-689.html>

100% Passing Guarantee
100% Money Back Assurance

Following Questions and Answers are all new published by Microsoft
Official Exam Center

-  **Instant Download** After Purchase
-  **100% Money Back** Guarantee
-  **365 Days** Free Update
-  **800,000+** Satisfied Customers



**QUESTION 1**

You administer computers that run Windows 8 Enterprise and are members of an Active Directory domain.

Some volumes on the computers are encrypted with BitLocker. The BitLocker recovery passwords are stored in Active Directory. A user forgets the BitLocker password to local drive E: and is unable to access the protected volume.

You need to provide a BitLocker recovery key to unlock the protected volume.

Which two actions should you perform? (Each correct answer presents part of the solution. Choose two.)

- A. Ask the user for his or her logon name.
- B. Ask the user for a recovery key ID for the protected drive.
- C. Ask the user to run the `manage-bde -protectors -disable e:` command.
- D. Ask the user for his or her computer name.

Correct Answer: BD

QUESTION 2

You manage computers that run Windows 8. You plan to install a desktop app named MarketingApp on one of the client computers.

You need to display a progress bar to the user while installing the app.

Which command should you run?

- A. `msiexec /x marketingapp.msi /qn`
- B. `msiexec /i marketingapp.msi /qn`
- C. `msiexec /i marketingapp.msi /qb`
- D. `msiexec /x marketingapp.msi /qb`

Correct Answer: C

`/i` Installs or configures a product.

`/x` Uninstall a product,

`/qn` Displays no user interface.

`/qb` Displays a basic user interface.

[http://technet.microsoft.com/en-us/library/cc759262\(v=ws.10\).aspx](http://technet.microsoft.com/en-us/library/cc759262(v=ws.10).aspx)

QUESTION 3



A company has client computers that run Windows 8.

You install a new device on a client computer. The device installation includes an application that runs when the computer starts. You experience problems with the application.

You need to prevent the application from running when the computer starts, without affecting any other application.

What should you do?

- A. Configure the device by using Device Manager.
- B. Run the msconfig command.
- C. Run the bcdedit command.
- D. Configure the application by using Task Manager.

Correct Answer: D

it's a new feature of Windows 8 <http://pcworld.co.nz/pcworld/pcw.nsf/feature/20-essential-windows-8-tips-and-tricks>

QUESTION 4

An organization has client computers that run Windows 7. You upgrade the client computers to Windows 8 without migrating the local user profiles.

You install the Windows Assessment and Deployment Kit (ADK) in the environment.

You need to migrate the user profiles from the Windows 7 installation to the Windows 8 installation.

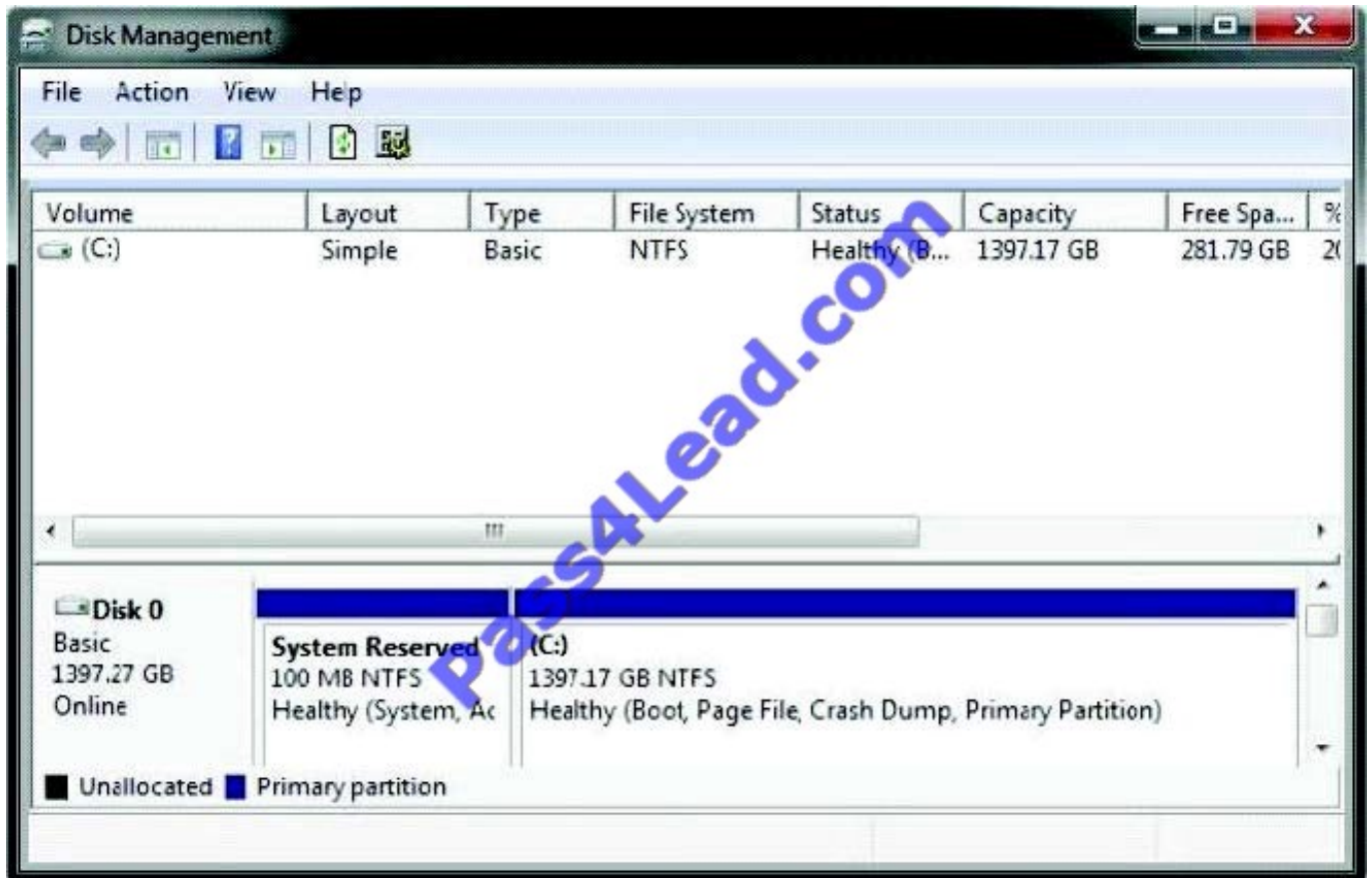
What should you do first on each client computer?

- A. Copy the Default Profile to a folder on drive C.
- B. Run Windows Easy Transfer and select the user profile to migrate.
- C. Run the scanstate command.
- D. Run the loadstate command.
- E. Run the ImageX command.

Correct Answer: C

QUESTION 5

A company has 10 client computers that run Windows 7. All client computers have the same hardware configuration. The hardware configuration includes custom hardware components manufactured by the company. The computer hard drives are configured as shown in the Disk Management window exhibit. (Click the Exhibit button.)



The company plans to upgrade the client computers to Windows 8.1.

You need to test hardware compatibility with Windows 8.1 on one client computer and leave the existing Windows 7 installation intact.

Which two actions should you perform? (Each correct answer presents part of the solution. Choose two.)

- A. Insert the Windows 8 installation media into the computer, and then run the Setup program.
- B. Shrink the current hard drive partition, and then create a new partition for the Windows 8 installation.
- C. Change the hard drive to a dynamic disk and create a new dynamic volume.
- D. Start the computer from the Windows 8 installation media and then select the Custom installation option.

Correct Answer: BD

[Latest 70-689 Dumps](#)

[70-689 VCE Dumps](#)

[70-689 Study Guide](#)



To Read the [Whole Q&As](#), please purchase the [Complete Version](#) from [Our website](#).

Try our product !

100% Guaranteed Success

100% Money Back Guarantee

365 Days Free Update

Instant Download After Purchase

24x7 Customer Support

Average 99.9% Success Rate

More than 800,000 Satisfied Customers Worldwide

Multi-Platform capabilities - [Windows](#), [Mac](#), [Android](#), [iPhone](#), [iPod](#), [iPad](#), [Kindle](#)

We provide exam PDF and VCE of Cisco, Microsoft, IBM, CompTIA, Oracle and other IT Certifications. You can view Vendor list of All Certification Exams offered:

<https://www.pass4lead.com/allproducts>

Need Help

Please provide as much detail as possible so we can best assist you.

To update a previously submitted ticket:



 <p>One Year Free Update Free update is available within One Year after your purchase. After One Year, you will get 50% discounts for updating. And we are proud to boast a 24/7 efficient Customer Support system via Email.</p>	 <p>Money Back Guarantee To ensure that you are spending on quality products, we provide 100% money back guarantee for 30 days from the date of purchase.</p>	 <p>Security & Privacy We respect customer privacy. We use McAfee's security service to provide you with utmost security for your personal information & peace of mind.</p>
---	---	--

Any charges made through this site will appear as Global Simulators Limited.

All trademarks are the property of their respective owners.

Copyright © pass4lead, All Rights Reserved.