



70-698^{Q&As}

Installing and Configuring Windows 10

Pass Microsoft 70-698 Exam with 100% Guarantee

Free Download Real Questions & Answers **PDF** and **VCE** file from:

<https://www.pass4lead.com/70-698.html>

100% Passing Guarantee
100% Money Back Assurance

Following Questions and Answers are all new published by Microsoft
Official Exam Center

-  **Instant Download** After Purchase
-  **100% Money Back** Guarantee
-  **365 Days** Free Update
-  **800,000+** Satisfied Customers





QUESTION 1

You have four computers configured as shown in the following table:

Computer name	Trusted Platform Module (TPM) version	Wi-Fi Direct support	Second Level Address Translation (SLAT)-capable processor support	Camera type
Computer1	None	No	Yes	Webcam and illuminated infrared camera
Computer2	1.2	Yes	Yes	illuminated infrared camera
Computer3	2.0	No	Yes	Webcam
Computer4	2.0	Yes	No	Webcam

You need to deploy Windows 10 Enterprise. The deployment must support Miracast, BitLocker Drive Encryption (BitLocker), and Windows Hello with facial recognition. On which computer should you install Windows 10?

- A. Computer1
- B. Computer2
- C. Computer3
- D. Computer4

Correct Answer: B

<https://www.microsoft.com/en-za/windows/windows-10-specifications#sysreqs>

QUESTION 2

You are reconfiguring storage on a computer running Windows 10.

You need to add an existing disk that is already installed in the computer to an existing storage pool.

Which Windows utility or Windows PowerShell cmdlet should you use?

- A. Set-StoragePool
- B. Diskpart
- C. Resize-StorageTier
- D. Add-PhysicalDisk

Correct Answer: D



You should use the Add-PhysicalDisk cmdlet.

The Add-PhysicalDisk cmdlet lets you add a physical disk to the specified storage pool. You should not use the Diskpart tool. This tool enables you to manage disk objects (disks, partitions, or volumes) by using scripts or direct input at a command prompt. However, it does not support the ability to add a hard disk to a storage pool.

You should not use the Set-StoragePool cmdlet. The Set-StoragePool cmdlet modifies the properties of a specified storage pool, but not the disks assigned to the storage pool.

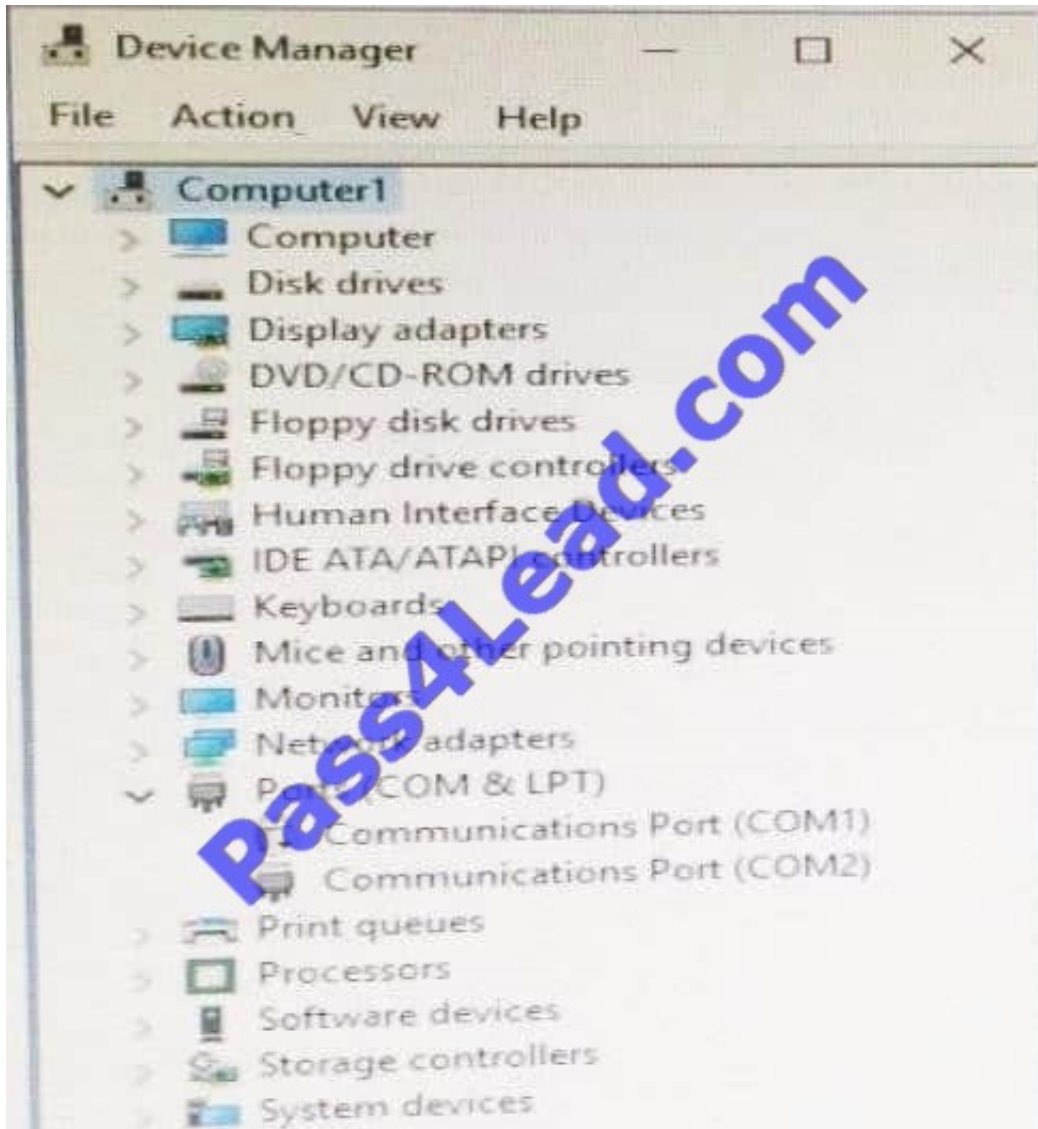
You should not use the Set-StorageTier cmdlet. This cmdlet is used to increase the size of a storage tier created from a storage pool. It does not let you modify the storage pool.

References:

<https://docs.microsoft.com/en-us/powershell/module/storage/add-physicaldisk?view=win10-ps>

QUESTION 3

You have a computer named Computer1 that runs Windows 10. Device Manager on Computer1 is configured as shown in the exhibit. (Click the Exhibit button.)



You need to ensure that you can use Communications Port (COM1). What should you do?

- A. Update the driver for Communications Port (COM1).
- B. Attach a device to Communications Port (COM1), and then click Scan for hardware changes.
- C. Enable Communications Port (COM1).
- D. Modify the IRQ and the I/O Range for Communications Port (COM1).

Correct Answer: C

<https://support.microsoft.com/en-us/help/819036/overview-of-the-comdisable-tool>

QUESTION 4

A user has a laptop named Computer 1 that runs Windows 10 and has a 64-bit application named App1 installed.



App1 fails to launch and generates an error message indicating that the application is not supported on this version of Windows.

You need to ensure that App1 can run successfully.

What should you do?

- A. Create a package that includes App1 by using the Windows Imaging and Configuration Designer (Windows ICD).
- B. Create a fix in the Compatibility Administrator.
- C. Run App1 in the Standard User Analyzer (SUA).
- D. Use the Application Compatibility Manager (ACM) to create an inventory package.

Correct Answer: B

[https://msdn.microsoft.com/en-us/library/windows/desktop/dd744763\(v=vs.85\).aspx](https://msdn.microsoft.com/en-us/library/windows/desktop/dd744763(v=vs.85).aspx)

QUESTION 5

You have a computer named Computer1 that runs Windows 10. Computer1 has a printer named Printer1 installed.

You need to configure the settings of Printer1 remotely from another computer.

Which tool should you use on the remote computer?

- A. Device Manager from Control Panel
- B. Print Management from Administrative Tools
- C. Printers and scanners from the Setting app
- D. Devices and Printers from Control Panel

Correct Answer: B

[https://technet.microsoft.com/en-us/library/cc753109\(v=ws.10\).aspx](https://technet.microsoft.com/en-us/library/cc753109(v=ws.10).aspx) <http://www.howto-connect.com/print-management-tool-in-windows-10/>

[Latest 70-698 Dumps](#)

[70-698 VCE Dumps](#)

[70-698 Exam Questions](#)



To Read the [Whole Q&As](#), please purchase the [Complete Version](#) from [Our website](#).

Try our product !

100% Guaranteed Success

100% Money Back Guarantee

365 Days Free Update

Instant Download After Purchase

24x7 Customer Support

Average 99.9% Success Rate

More than 800,000 Satisfied Customers Worldwide

Multi-Platform capabilities - [Windows](#), [Mac](#), [Android](#), [iPhone](#), [iPod](#), [iPad](#), [Kindle](#)

We provide exam PDF and VCE of Cisco, Microsoft, IBM, CompTIA, Oracle and other IT Certifications. You can view Vendor list of All Certification Exams offered:

<https://www.pass4lead.com/allproducts>

Need Help

Please provide as much detail as possible so we can best assist you.

To update a previously submitted ticket:



 <p>One Year Free Update Free update is available within One Year after your purchase. After One Year, you will get 50% discounts for updating. And we are proud to boast a 24/7 efficient Customer Support system via Email.</p>	 <p>Money Back Guarantee To ensure that you are spending on quality products, we provide 100% money back guarantee for 30 days from the date of purchase.</p>	 <p>Security & Privacy We respect customer privacy. We use McAfee's security service to provide you with utmost security for your personal information & peace of mind.</p>
---	---	--

Any charges made through this site will appear as Global Simulators Limited.

All trademarks are the property of their respective owners.

Copyright © pass4lead, All Rights Reserved.