



70-743^{Q&As}

Upgrading Your Skills to MCSA Windows Server 2016

Pass Microsoft 70-743 Exam with 100% Guarantee

Free Download Real Questions & Answers **PDF** and **VCE** file from:

<https://www.pass4lead.com/70-743.html>

100% Passing Guarantee
100% Money Back Assurance

Following Questions and Answers are all new published by Microsoft
Official Exam Center

-  **Instant Download** After Purchase
-  **100% Money Back** Guarantee
-  **365 Days** Free Update
-  **800,000+** Satisfied Customers





QUESTION 1

You have a server that runs Windows Server 2016. You install three additional disks named Disk1, Disk2, and Disk3. You plan to use these physical disks to store data.

You need to create a volume to store data. The solution must prevent data loss in the event of a single disk failure.

Which three actions should you perform in sequence? To answer, move the appropriate actions from the list of actions to the answer area and arrange them in the correct order.

Select and Place:

Actions

- Assign a Storage Tier to a virtual disk.
- Create a Storage Pool.
- Create a new Storage Tier.
- Create a Virtual Disk Clone.
- Create a Volume.
- Create a Virtual Disk.

Answer Area

⬅
➡

⬆
⬇

Correct Answer:

Actions

- Assign a Storage Tier to a virtual disk.
-
-
- Create a new Storage Tier.
- Create a Virtual Disk Clone.
-
-

Answer Area

⬅
➡

Create a Storage Pool.

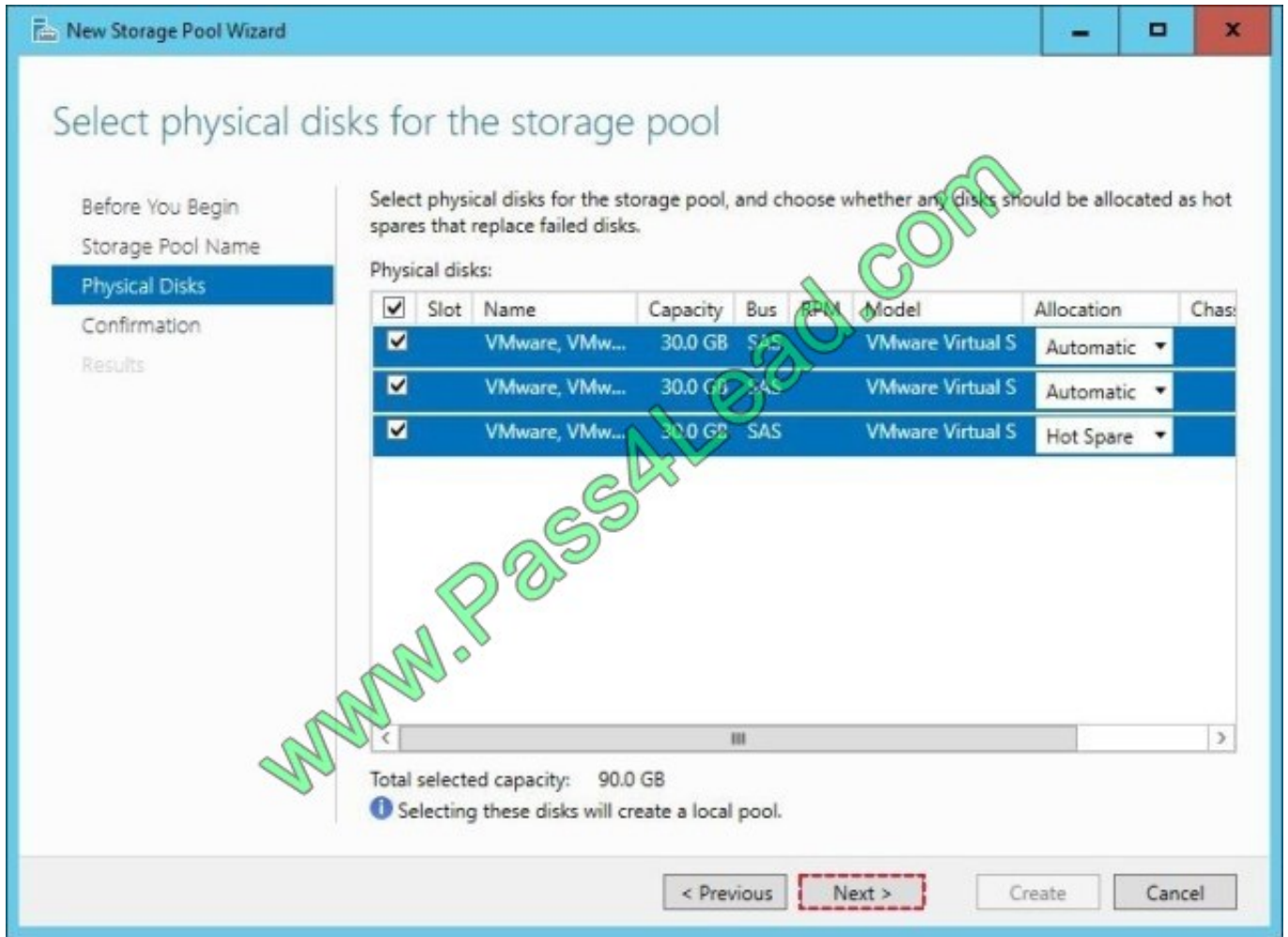
 Create a Virtual Disk.

 Create a Volume.

⬆
⬇

Step 1: Create a Storage Pool

First we create a Storage Pool. We specify which disks should be included in the storage pool.



Example:

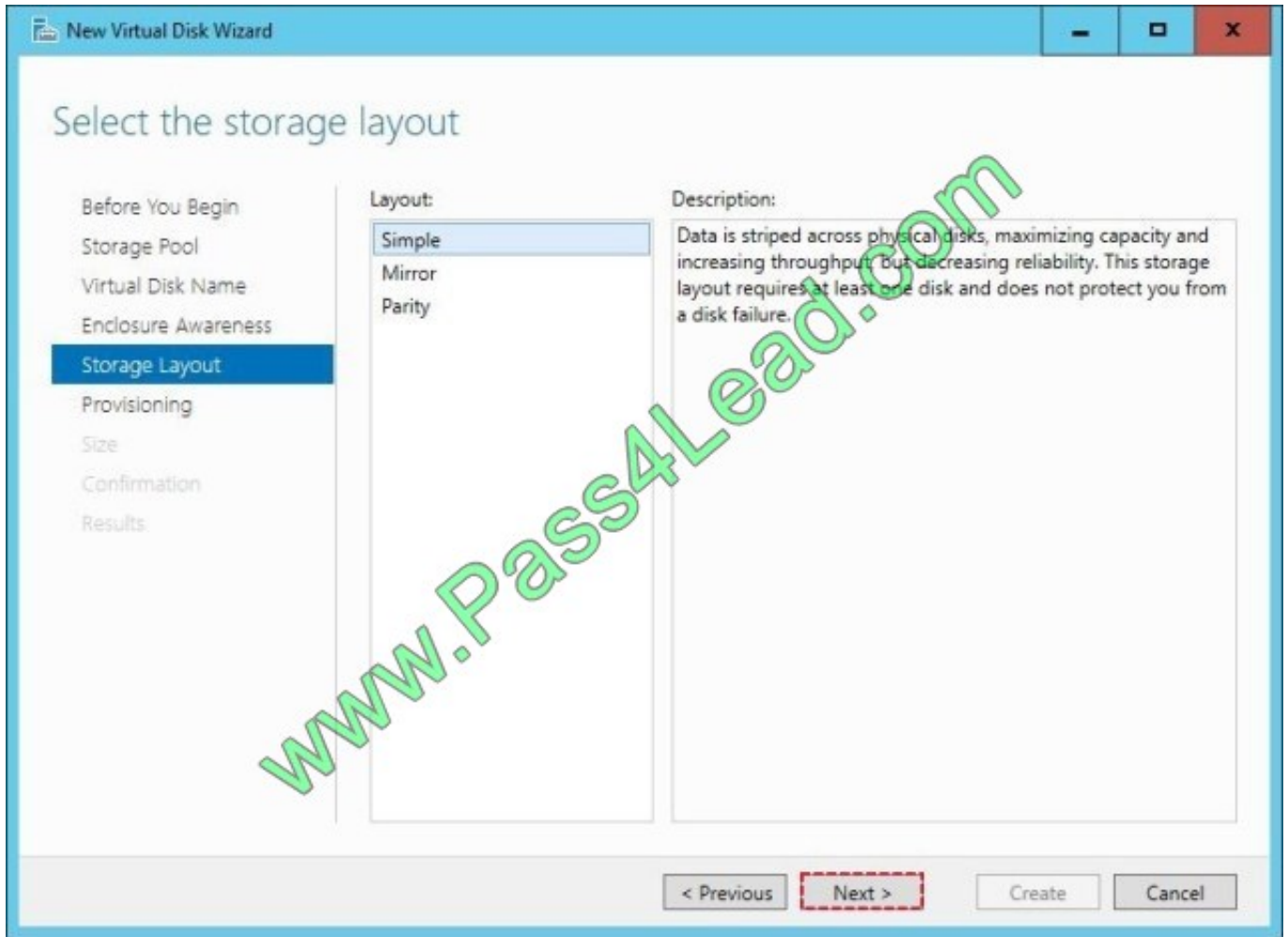
Step 2: Create a Virtual Disk

After creating the storage pool now start creating a virtual disk for the pool you had created.

When the storage pool wizard finishes, just mark the create a virtual disk option to create a virtual disk after this wizard.

Select the storage pool to create a virtual disk.

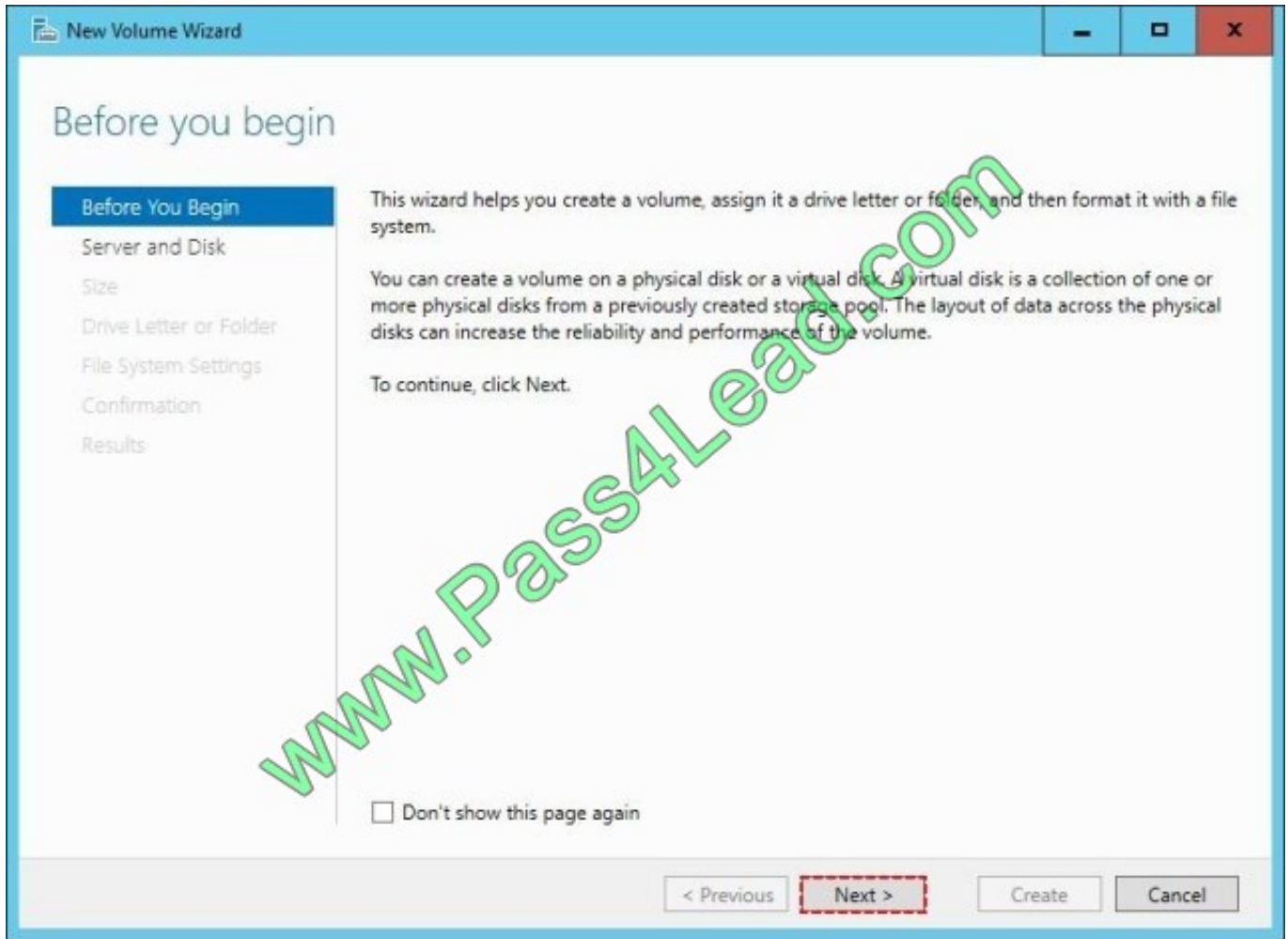
Later in the New Virtual Disk wizard you select the Storage Layout. Select Parity.



Step 3: Create a Volume

After creating the virtual disk, create a volume with the New Volume Wizard.

You create the volume on the Virtual Disk you created in Step 2.



References: <http://www.tactig.com/create-a-storage-pool-windows-server/>

QUESTION 2

Your network contains an Active Directory domain named contoso.com. The domain contains four servers named Server1, Server2, Server3, and Server4 that run Windows Server 2016.

Server1 has IP Address Management (IPAM) installed. Server2, Server3, and Server 4 have the DHCP Server role installed. IPAM manages Server2, Server3, and Server4.

A domain user named User1 is a member of the groups shown in the following table.



Server name	Group
Server1	IPAM Users
Server2	DHCP Administrators
Server3	DHCP Users
Server4	Users

Which actions can User1 perform? To answer, select the appropriate options in the answer area.

Hot Area:

Answer Area

Actions	Can be performed by User1	Cannot be performed by User1
Use the DHCP console on Server1 to create a DHCP scope on Server2.	<input type="radio"/>	<input type="radio"/>
Use the DHCP console on Server1 to create a DHCP scope on Server3.	<input type="radio"/>	<input type="radio"/>
Use the IPAM node of Server Manager on Server1 to create a DHCP scope on Server4.	<input type="radio"/>	<input type="radio"/>

Correct Answer:

Answer Area

Actions	Can be performed by User1	Cannot be performed by User1
Use the DHCP console on Server1 to create a DHCP scope on Server2.	<input checked="" type="radio"/>	<input type="radio"/>
Use the DHCP console on Server1 to create a DHCP scope on Server3.	<input type="radio"/>	<input checked="" type="radio"/>
Use the IPAM node of Server Manager on Server1 to create a DHCP scope on Server4.	<input type="radio"/>	<input checked="" type="radio"/>

Box 1: Can be performed by User1 DHCP Administrators can create DHCP scopes. Box 2: Cannot be performed by User1 DHCP Users cannot create scopes. Box 3: Cannot be performed by User1 IPAM users cannot creates copes. References: [https://technet.microsoft.com/en-us/library/dn741281\(v=ws.11\).aspx#create_access_scope](https://technet.microsoft.com/en-us/library/dn741281(v=ws.11).aspx#create_access_scope)



QUESTION 3

Refer to Exhibit:

Name	IP address	IP subnet mask
Server1	10.10.50.20	255.255.255.0
Server2	10.10.50.21	255.255.255.0
Container1	172.16.1.100	255.255.255.0
Container2	172.16.1.101	255.255.255.0

Container1 hosts a website on port 8080.

You create a port mapping between port 8080 on Container1 and port 80 on Server1.

Which URL can you use to access the website from Server1, Server2, and Container2? To answer, select the appropriate options in the answer area.

Hot Area:

Answer Area

Server1:

- http://10.10.50.20:80 only
- http://10.10.50.20:8080 only
- http://172.16.1.100:80 only
- http://172.16.1.100:8080 only
- http://10.10.50.20:80 and http://172.16.1.100:8080
- http://10.10.50.20:8080 and http://172.16.1.100:80

Server2:

- http://10.10.50.20:80 only
- http://10.10.50.20:8080 only
- http://172.16.1.100:80 only
- http://172.16.1.100:8080 only
- http://10.10.50.20:80 and http://172.16.1.100:8080
- http://10.10.50.20:8080 and http://172.16.1.100:80

Server3:

- http://10.10.50.20:80 only
- http://10.10.50.20:8080 only
- http://172.16.1.100:80 only
- http://172.16.1.100:8080 only
- http://10.10.50.20:80 and http://172.16.1.100:8080
- http://10.10.50.20:8080 and http://172.16.1.100:80

Correct Answer:



QUESTION 4

You have a Windows Server 2016 failover cluster that has a cluster network named ClusterNetwork1.

You need to ensure that ClusterNetwork1 is enabled for cluster communication only.

What command should you run? To answer, select the appropriate options in the answer area.

Hot Area:

Answer Area

(

Get-ClusterNetwork
Get-ClusterResource
Set-ClusterParameter
Update-ClusterIPResource

 ClusterNetwork1).

ID
Metric
Role
State

 =1

Correct Answer:



Answer Area



Box 1: Get-ClusterNetwork

Cluster network roles can be changed using PowerShell command, Get-ClusterNetwork.

For example:

`(Get-ClusterNetwork "Cluster Network 1"). Role =1`

Box 2: Role

Cluster Network Roles:

Cluster networks are automatically created for all logical subnets connected to all nodes in the Cluster. Each network adapter card connected to a common subnet will be listed in Failover Cluster Manager. Cluster networks can be configured

for different uses.

Three roles:

*

Disabled for Cluster Communication (value 0)

*

Enabled for Cluster Communication only (value 1)

*

Enabled for client and cluster communication (value 3)

References:

<https://blogs.technet.microsoft.com/askcore/2014/02/19/configuring-windows-failover-cluster-networks/>

QUESTION 5

You have a server named Server1 that runs Windows Server 2016.

Server1 has four SCSI disks and a storage pool named Pool1 that contains three disks.



You create a virtual disk named Disk 1 that uses a mirrored layout.

You create a partition named Partition1 that uses all of the available space on Disk 1.

You need to extend Partition1.

What should you do first?

- A. From Windows PowerShell, run the Resize-StorageTier cmdlet.
- B. From Windows PowerShell, run the Resize-VHD cmdlet.
- C. From Windows PowerShell, run the Resize-VirtualDisk cmdlet.
- D. From Disk Management, modify the properties of Partition1.

Correct Answer: C

[70-743 PDF Dumps](#)

[70-743 Study Guide](#)

[70-743 Exam Questions](#)



To Read the [Whole Q&As](#), please purchase the [Complete Version](#) from [Our website](#).

Try our product !

100% Guaranteed Success

100% Money Back Guarantee

365 Days Free Update

Instant Download After Purchase

24x7 Customer Support

Average 99.9% Success Rate

More than 800,000 Satisfied Customers Worldwide

Multi-Platform capabilities - [Windows](#), [Mac](#), [Android](#), [iPhone](#), [iPod](#), [iPad](#), [Kindle](#)

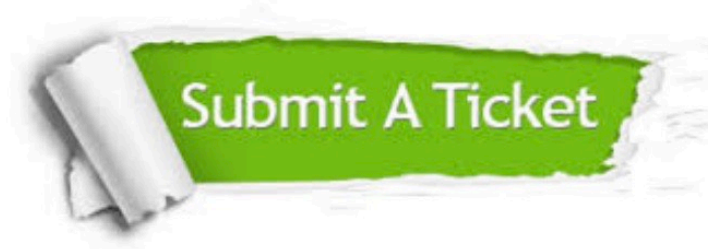
We provide exam PDF and VCE of Cisco, Microsoft, IBM, CompTIA, Oracle and other IT Certifications. You can view Vendor list of All Certification Exams offered:

<https://www.pass4lead.com/allproducts>

Need Help

Please provide as much detail as possible so we can best assist you.

To update a previously submitted ticket:



 <p>One Year Free Update Free update is available within One Year after your purchase. After One Year, you will get 50% discounts for updating. And we are proud to boast a 24/7 efficient Customer Support system via Email.</p>	 <p>Money Back Guarantee To ensure that you are spending on quality products, we provide 100% money back guarantee for 30 days from the date of purchase.</p>	 <p>Security & Privacy We respect customer privacy. We use McAfee's security service to provide you with utmost security for your personal information & peace of mind.</p>
---------------------------------------------------------------------------------------------------------------------------------------------------------------------------------------------------------------------------------------------------------------------------------------------------------------------------------	-------------------------------------------------------------------------------------------------------------------------------------------------------------------------------------------------------------------------------------------------------------	------------------------------------------------------------------------------------------------------------------------------------------------------------------------------------------------------------------------------------------------------------------------------------

Any charges made through this site will appear as Global Simulators Limited.

All trademarks are the property of their respective owners.

Copyright © pass4lead, All Rights Reserved.