



70-744^{Q&As}

Securing Windows Server 2016

Pass Microsoft 70-744 Exam with 100% Guarantee

Free Download Real Questions & Answers **PDF** and **VCE** file from:

<https://www.pass4lead.com/70-744.html>

100% Passing Guarantee
100% Money Back Assurance

Following Questions and Answers are all new published by Microsoft
Official Exam Center

-  **Instant Download** After Purchase
-  **100% Money Back** Guarantee
-  **365 Days** Free Update
-  **800,000+** Satisfied Customers





QUESTION 1

HOTSPOT

Your network contains two Active Directory forests named contoso.com and adatum.com. Contoso.com contains a Hyper-V host named Server1. Server1 is a member of a group named HyperHosts. Adatum.com contains a server named

Server2. Server1 and Server2 run Windows Server 2016.

Contoso.com trusts adatum.com.

You plan to deploy shielded virtual machines to Server1 and to configure Admin-trusted attestation on Server2.

Which component should you install and which cmdlet should you run on Server2? To answer, select the appropriate options in the answer area.

Hot Area:

Answer Area

Component to install:

	▼
The Active Directory Domain Services server role	
The Host Guardian Hyper-V Support feature	
The Host Guardian Service server role	

Cmdlet to run:

	▼
Add-HgsAttestationCIPolicy	
Add-HgsAttestationHostGroup	
Export-HgsGuardian	
Import-HgsGuardian	

Correct Answer:



Answer Area

Component to install:

	▼
The Active Directory Domain Services server role	
The Host Guardian Hyper-V Support feature	
The Host Guardian Service server role	

Cmdlet to run:

	▼
Add-HgsAttestationCIPolicy	
Add-HgsAttestationHostGroup	
Export-HgsGuardian	
Import-HgsGuardian	

<https://blogs.technet.microsoft.com/datacentersecurity/2016/03/16/windows-server-2016-and-host-guardian-service-for-shielded-vms/> <https://docs.microsoft.com/en-us/windows-server/virtualization/guarded-fabric-shielded-vm/guarded-fabric-admin-trusted-attestation-creating-a-security-group>

QUESTION 2

You have a server named Server1 that runs Windows Server 2016.

You need to identify whether any inbound rules on Server1 require that users be authenticated before they can connect to the server.

Which cmdlet should you use?

- A. Get-NetIPSecRule
- B. Get-NetFirewallRule
- C. Get-NetFirewallProfile
- D. Get-NetFirewallSetting
- E. Get-NetFirewallPortFilter
- F. Get-NetFirewallAddressFilter
- G. Get-NetFirewallApplicationFilter

Correct Answer: B

The complete cmdlet to perform the required action:



```
PS C:\> Get-NetFirewallRule -DisplayName TEST | Get-NetFirewallSecurityFilter

Authentication      : Required
Encryption          : NotRequired
OverrideBlockRules  : False
LocalUser           : Any
RemoteUser          : Any
RemoteMachine       : Any

PS C:\>
```

QUESTION 3

Note: This question is part of a series of questions that present the same scenario. Each question in the series contains a unique solution that might meet the stated goals. Some question sets might have more than one correct solution, while

others might not have a correct solution.

After you answer a question in this section, you will NOT be able to return to it. As a result, these questions will not appear in the review screen.

Your network contains an Active Directory domain named contoso.com. The domain contains a computer named Computer1 that runs Windows 10. Computer1 connects to a home network and a corporate network.

The corporate network uses the 172.16.0.0/24 address space internally.

Computer1 runs an application named App1 that listens to port 8080.

You need to prevent connections to App1 when Computer1 is connected to the home network.

Solution: From Group Policy Management, You create an AppLocker rule.

A. Yes

B. No

Correct Answer: B

AppLocker does not filter incoming network traffic, what you actually need is Windows Firewall Inbound Rule on the Private profile. [https://technet.microsoft.com/en-us/library/dd759068\(v=ws.11\).aspx](https://technet.microsoft.com/en-us/library/dd759068(v=ws.11).aspx)

QUESTION 4

Your network contains an Active Directory domain named contoso.com. The domain contains 100 servers.

You deploy the Local Administrator Password Solution (LAPS) to the network.

You discover that the members of a group named FinanceAdministrators can view the password of the local Administrator accounts on the servers in an organizational unit (OU) named FinanceServers.



You need to prevent the FinanceAdministrators members from viewing the local administrators' passwords on the servers in FinanceServers. Which permission should you remove from FinanceAdministrators?

- A. all extended rights
- B. read all properties
- C. read permissions
- D. list contents

Correct Answer: A

<https://4sysops.com/archives/set-up-microsoft-laps-local-administrator-password-solution-in-active-directory/>

QUESTION 5

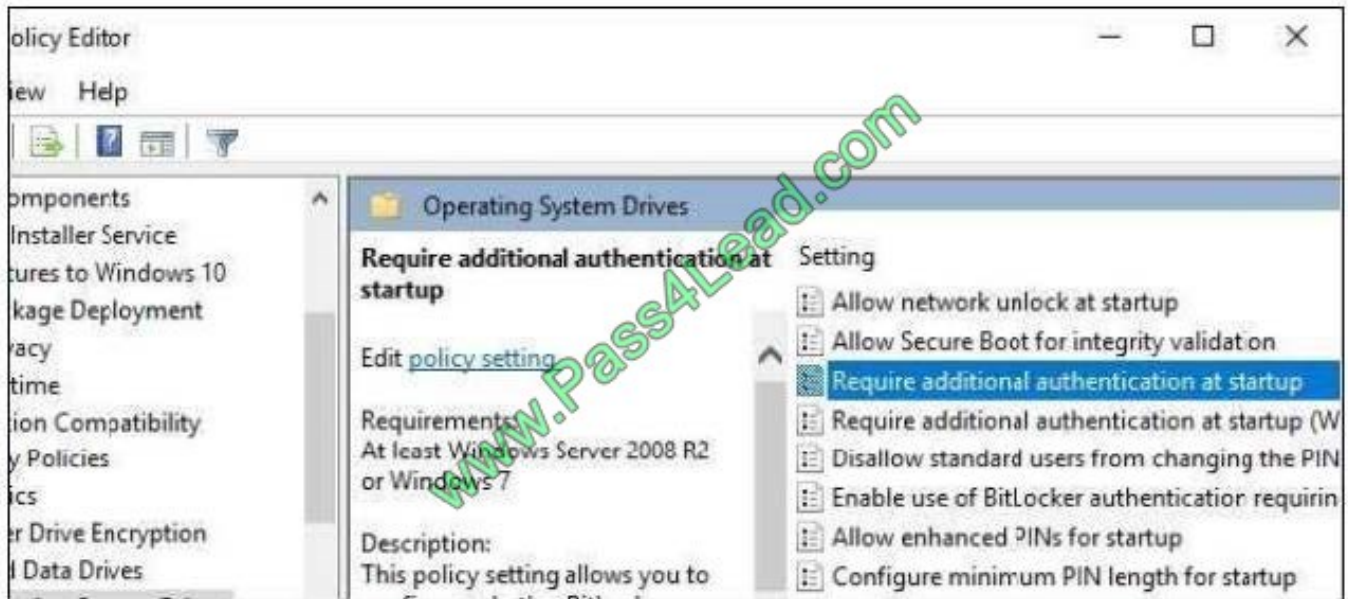
You have a Hyper-V host named Server1 that runs Windows Server 2016. Server1 has a generation 2 virtual machine named VM1 that runs Windows 10.

You need to ensure that you can turn on BitLocker Drive Encryption (BitLocker) for drive C: on VM1. What should you do?

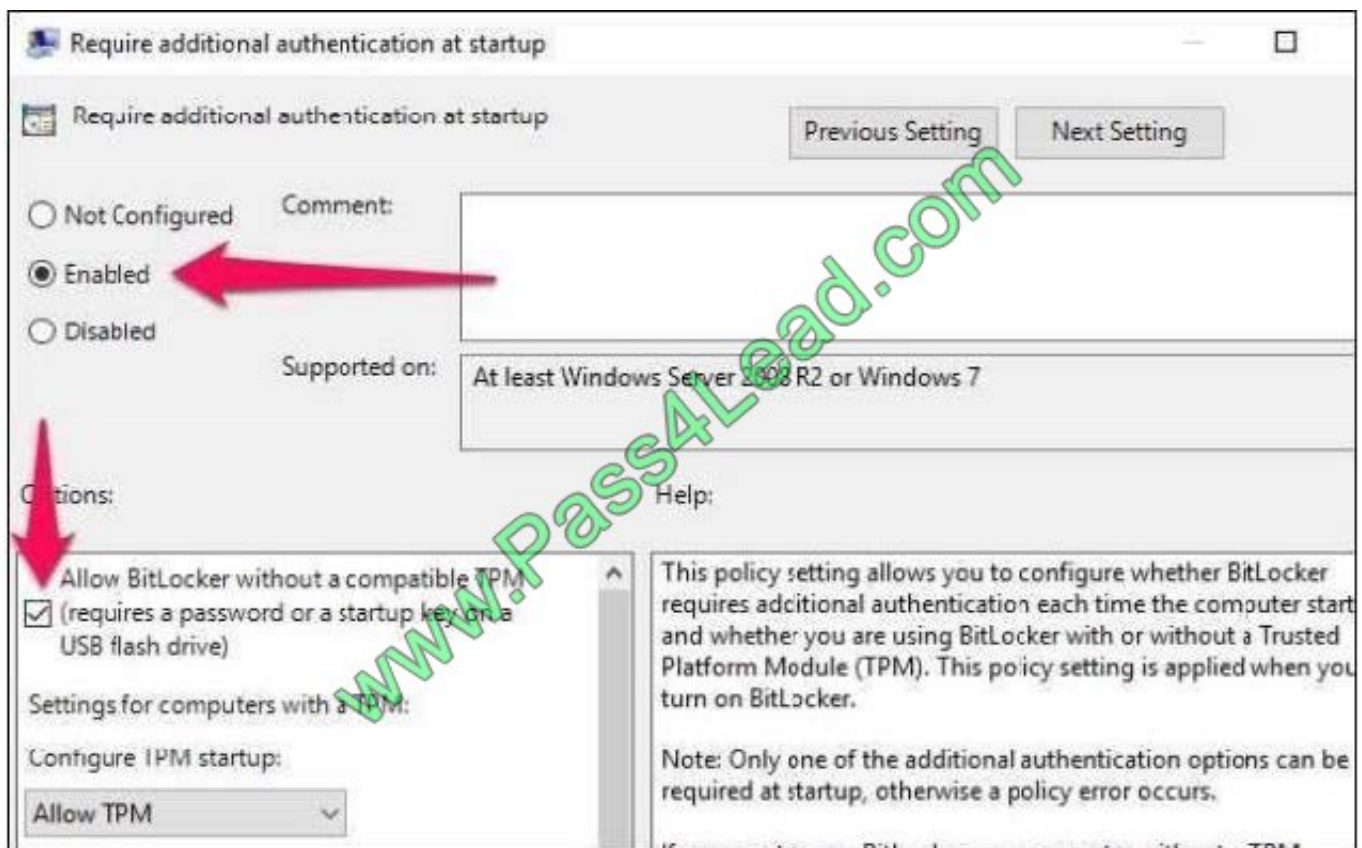
- A. From Server1, install the BitLocker feature.
- B. From Server1, enable nested virtualization for VM1.
- C. From VM1, configure the Require additional authentication at startup Group Policy setting.
- D. From VM1, configure the Enforce drive encryption type on fixed data drives Group Policy setting.

Correct Answer: C

<https://www.howtogeek.com/howto/6229/how-to-use-bitlocker-on-drives-without-tpm/>If you don't use TPM for protecting a drive, there is no such Virtual TPM or VM Generation, or VM Configuration version requirement, you can even use BitLocker without TPM Protector with earlier versions of Windows. How to Use BitLocker Without a TPM You can bypass this limitation through a Group Policy change. If your PC is joined to a business or school domain, you can't change the Group Policy setting yourself. Group policy is configured centrally by your network administrator. To open the Local Group Policy Editor, press Windows+R on your keyboard, type "gpedit.msc" into the Run dialog box, and press Enter. Navigate to Local Computer Policy > Computer Configuration > Administrative Templates > Windows Components > BitLocker Drive Encryption > Operating System Drives in the left pane.



Double-click the "Require additional authentication at startup" option in the right pane.



Select "Enabled" at the top of the window, and ensure the "Allow BitLocker without a compatible TPM (requires a password or a startup key on a USB flash drive)" checkbox is enabled here. Click "OK" to save your changes. You can now close the Group Policy Editor window. Your change takes effect immediately--you don't even need to reboot.



To Read the [Whole Q&As](#), please purchase the [Complete Version](#) from [Our website](#).

Try our product !

100% Guaranteed Success

100% Money Back Guarantee

365 Days Free Update

Instant Download After Purchase

24x7 Customer Support

Average 99.9% Success Rate

More than 800,000 Satisfied Customers Worldwide

Multi-Platform capabilities - [Windows](#), [Mac](#), [Android](#), [iPhone](#), [iPod](#), [iPad](#), [Kindle](#)

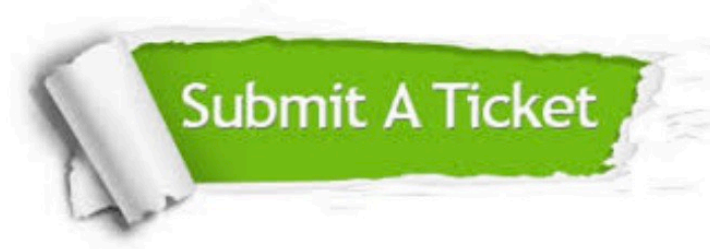
We provide exam PDF and VCE of Cisco, Microsoft, IBM, CompTIA, Oracle and other IT Certifications. You can view Vendor list of All Certification Exams offered:

<https://www.pass4lead.com/allproducts>

Need Help

Please provide as much detail as possible so we can best assist you.

To update a previously submitted ticket:



 <p>One Year Free Update Free update is available within One Year after your purchase. After One Year, you will get 50% discounts for updating. And we are proud to boast a 24/7 efficient Customer Support system via Email.</p>	 <p>Money Back Guarantee To ensure that you are spending on quality products, we provide 100% money back guarantee for 30 days from the date of purchase.</p>	 <p>Security & Privacy We respect customer privacy. We use McAfee's security service to provide you with utmost security for your personal information & peace of mind.</p>
---	---	--

Any charges made through this site will appear as Global Simulators Limited.

All trademarks are the property of their respective owners.

Copyright © pass4lead, All Rights Reserved.