



70-767^{Q&As}

Implementing a Data Warehouse using SQL

Pass Microsoft 70-767 Exam with 100% Guarantee

Free Download Real Questions & Answers **PDF** and **VCE** file from:

<https://www.pass4lead.com/70-767.html>

100% Passing Guarantee
100% Money Back Assurance

Following Questions and Answers are all new published by Microsoft
Official Exam Center

-  **Instant Download** After Purchase
-  **100% Money Back** Guarantee
-  **365 Days** Free Update
-  **800,000+** Satisfied Customers





QUESTION 1

You are creating a sales data warehouse. When a product exists in the product dimension, you update the product name. When a product does not exist, you insert a new record.

In the current implementation, the DimProduct table must be scanned twice, once for the insert and again for the update. As a result, inserts and updates to the DimProduct table take longer than expected.

You need to create a solution that uses a single command to perform an update and an insert.

How should you use a MERGE T-SQL statement to accomplish this goal? (To answer, drag the appropriate answer choice from the list of options to the correct location or locations in the answer area.)

You may need to drag the split bar between panes or scroll to view content.)

Select and Place:

Source
Target
Product
Inserted
MATCHED THEN
NOT MATCHED BY TARGET THEN
NOT MATCHED BY PRODUCT AND (Target.ProductID is NULL) THEN
MATCHED AND (Target.ProductID is NULL) THEN

```
MERGE dbo.DimProduct AS [ ]
USING (SELECT ProductID, ProductName, ProductColor, ProductCategory
FROM dbo.StagingProduct) AS [ ]
ON (Target.ProductID = Source.ProductID)
WHEN [ ]
UPDATE SET Target.ProductName = Source.ProductName
WHEN [ ]
INSERT (ProductID, ProductName, ProductColor, ProductCategory)
VALUES (Source.ProductID, Source.ProductName, Source.ProductColor, Source.ProductCategory)
OUTPUT $action, Inserted.*, Deleted.*;
```

Correct Answer:



```
Product
Inserted

NOT MATCHED BY PRODUCT AND (Target.ProductID is NULL) THEN
MATCHED AND (Target.ProductID is NULL) THEN

MERGE dbo.DimProduct AS Target
USING (SELECT ProductID, ProductName, ProductColor, ProductCategory
FROM dbo.StagingProduct) AS Source
ON (Target.ProductID = Source.ProductID)
WHEN MATCHED THEN
UPDATE SET Target.ProductName = Source.ProductName
WHEN NOT MATCHED BY TARGET THEN
INSERT (ProductID, ProductName, ProductColor, ProductCategory)
VALUES (Source.ProductID, Source.ProductName, Source.ProductColor, Source.ProductCategory)
OUTPUT $action, Inserted.*, Deleted.*;
```

QUESTION 2

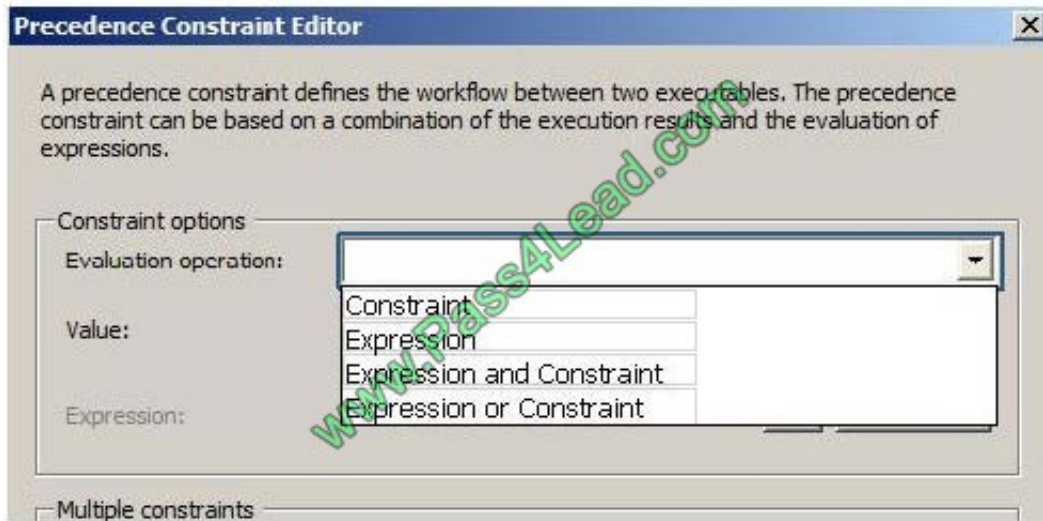
You are developing a SQL Server Integration Services (SSIS) package. An Execute SQL task in the package checks product stock levels and sets a package variable named InStock to TRUE or FALSE depending on the stock level found.

After the successful execution of the Execute SQL task, one of two data flow tasks must run, depending on the value of the InStock variable.

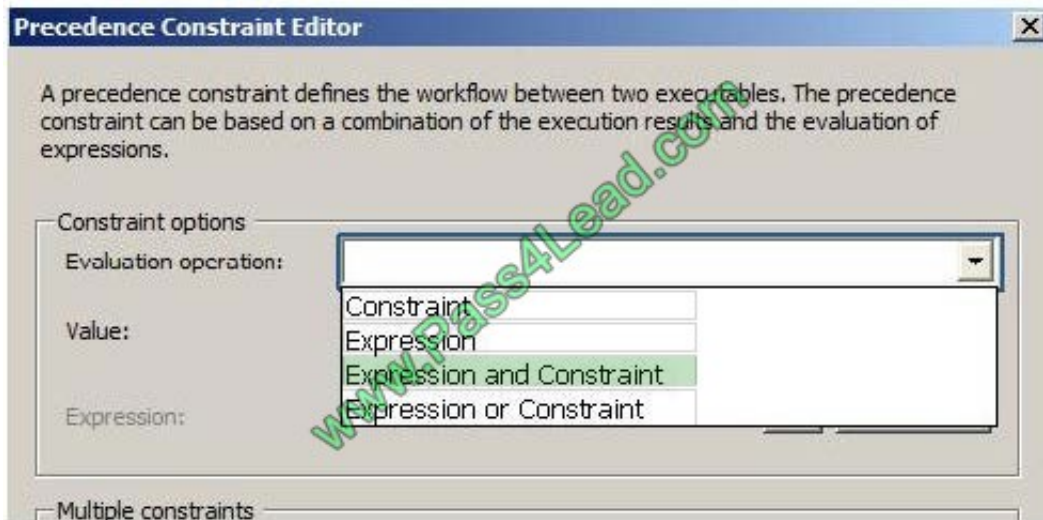
You need to set the precedence constraints.

Which value for the evaluation operation should you use? (To answer, select the appropriate option for the evaluation operation in the answer area.)

Hot Area:

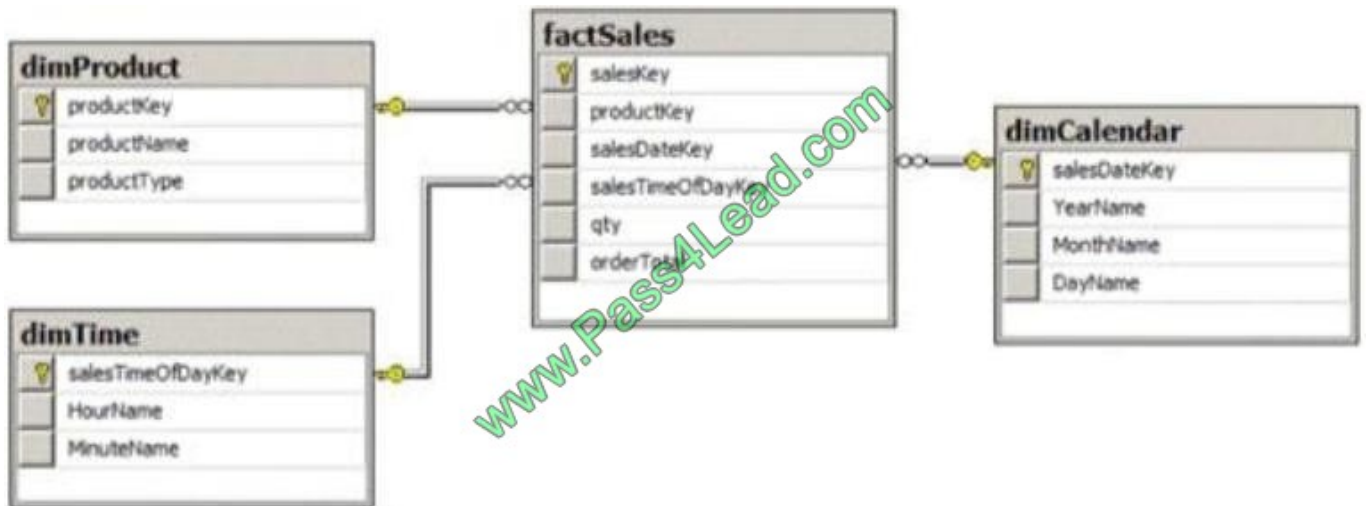


Correct Answer:



QUESTION 3

You are reviewing the design of an existing fact table named factSales, which is loaded from a SQL Azure database by a SQL Server Integration Services (SSIS) package each day. The fact table has approximately 1 billion rows and is dimensioned by product, sales date, and sales time of day.



The database administrator is concerned about the growth of the database. Users report poor reporting performance against this database. Reporting requirements have recently changed and the only remaining report that uses this fact table

reports sales by product name, sale month, and sale year. No other reports will be created against this table.

You need to reduce the report processing time and minimize the growth of the database.

What should you do?

- A. Partition the table by product type.
- B. Create a view over the fact table to aggregate sales by month.
- C. Change the granularity of the fact table to month.
- D. Create an indexed view over the fact table to aggregate sales by month.

Correct Answer: C

QUESTION 4

You are developing a Microsoft SQL Server Master Data Services (MDS) solution.

The model contains an entity named Product. The Product entity has three user-defined attributes named category, Subcategory, and Price, respectively.

You need to ensure that combinations of values stored in the category and subcategory attributes are unique.

What should you do?

- A. Create a derived hierarchy based on the category and subcategory attributes. Use the category attribute as the top level for the hierarchy.
- B. Publish two business rules, one for each of the Category and Subcategory attributes.
- C. Set the value of the Attribute Type property for the Category and Subcategory attributes to Domain-based.



D. Create a custom index that will be used by the Product entity.

Correct Answer: A

QUESTION 5

You have a series of analytic data models and reports that provide insights into the participation rates for sports at different schools. Users enter information about sports and

participants into a client application. The application stores this transactional data in a Microsoft SQL Server database. A SQL Server Integration Services (SSIS) package loads the data into the models.

When users enter data, they do not consistently apply the correct names for the sports.

Sport	Variations entered by users
baseball	baseball, ball, play ball
football	soccer, football

The following table shows examples of the data entry issues.

You need to improve the quality of the data.

Which four actions should you perform in sequence? To answer, move the appropriate actions from the list of actions to the answer area and arrange them in the correct order.

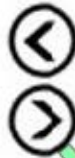
Select and Place:



Actions

- Add an external link from the Data Quality Service (DQS) knowledge base to the SQL Server table of replacement values.
- Publish the knowledge base and modify the ETL package to call it by using a .NET Script transformation.
- Create a Data Quality Service (DQS) knowledge base.
- Add a Lookup transformation to the ETL package to replace incorrect values
- Import the raw data from the users to perform discovery.
- Create a table to store a list of incorrect values and the correct values to which they should map.
- Publish the knowledge base and modify the ETL package to call it by using a Data Quality Service (DQS) Client transformation.
- Map alternative values for entries that have been indentified as being incorrectly entered.

Answer Area



Correct Answer:



Actions

Add an external link from the Data Quality Service (DQS) knowledge base to the SQL Server table of replacement values.

Publish the knowledge base and modify the ETL package to call it by using a .NET Script transformation.

Add a Lookup transformation to the ETL package to replace incorrect values

Create a table to store a list of incorrect values and the correct values to which they should map

Answer Area

Import the raw data from the users to perform discovery.

Map alternative values for entries that have been identified as being incorrectly entered.

Create a Data Quality Service (DQS) knowledge base.

Publish the knowledge base and modify the ETL package to call it by using a Data Quality Service (DQS) Client transformation.

References: <https://docs.microsoft.com/en-us/sql/data-quality-services/perform-knowledgediscovery>



To Read the [Whole Q&As](#), please purchase the [Complete Version](#) from [Our website](#).

Try our product !

100% Guaranteed Success

100% Money Back Guarantee

365 Days Free Update

Instant Download After Purchase

24x7 Customer Support

Average 99.9% Success Rate

More than 800,000 Satisfied Customers Worldwide

Multi-Platform capabilities - [Windows](#), [Mac](#), [Android](#), [iPhone](#), [iPod](#), [iPad](#), [Kindle](#)

We provide exam PDF and VCE of Cisco, Microsoft, IBM, CompTIA, Oracle and other IT Certifications. You can view Vendor list of All Certification Exams offered:

<https://www.pass4lead.com/allproducts>

Need Help

Please provide as much detail as possible so we can best assist you.

To update a previously submitted ticket:



 <p>One Year Free Update Free update is available within One Year after your purchase. After One Year, you will get 50% discounts for updating. And we are proud to boast a 24/7 efficient Customer Support system via Email.</p>	 <p>Money Back Guarantee To ensure that you are spending on quality products, we provide 100% money back guarantee for 30 days from the date of purchase.</p>	 <p>Security & Privacy We respect customer privacy. We use McAfee's security service to provide you with utmost security for your personal information & peace of mind.</p>
---	---	--

Any charges made through this site will appear as Global Simulators Limited.

All trademarks are the property of their respective owners.

Copyright © pass4lead, All Rights Reserved.