

# 75940X<sup>Q&As</sup>

Avaya Converged Platform Integration

## Pass Avaya 75940X Exam with 100% Guarantee

Free Download Real Questions & Answers **PDF** and **VCE** file from:

<https://www.pass2lead.com/75940x.html>

100% Passing Guarantee  
100% Money Back Assurance

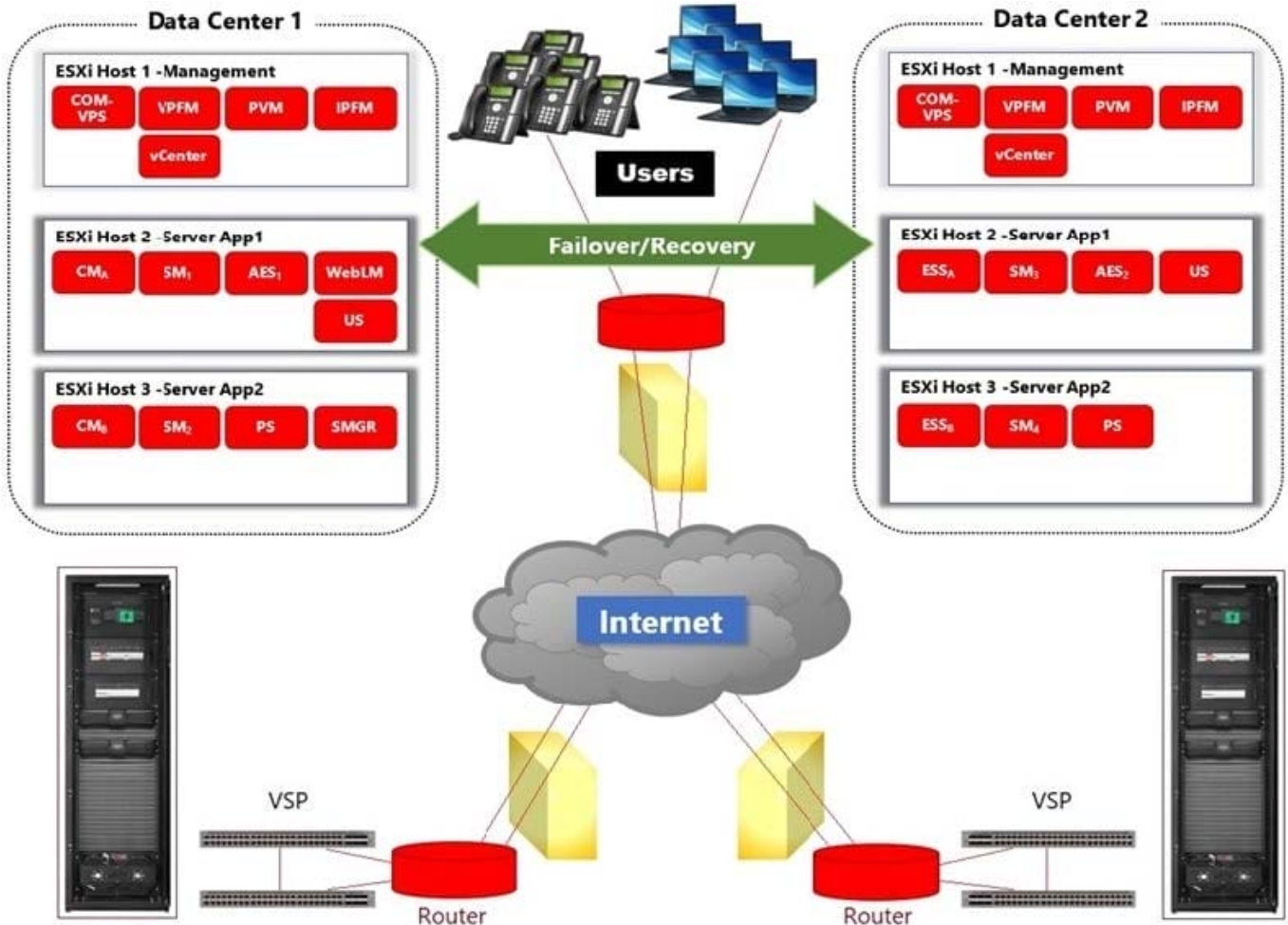
Following Questions and Answers are all new published by Avaya  
Official Exam Center

-  **Instant Download** After Purchase
-  **100% Money Back** Guarantee
-  **365 Days** Free Update
-  **800,000+** Satisfied Customers



**QUESTION 1**

Refer to the exhibit.



In the deployment shown in the exhibit, how is High Availability achieved across the two Data Centers?

- A. By ensuring that the L2 VLANs are extended across to both Data Centers.
- B. By managing both Data Centers using the same vCenter Server and using vMotion and DRS.
- C. By using Virtualization Provisioning Service (VPS) to automate the provisioning of the network hardware and vSwitches across the two Data Centers.
- D. By using Avaya Aura?Application High Availability features.

Correct Answer: C

Reference: <https://downloads.avaya.com/css/P8/documents/100182353>

**QUESTION 2**

Refer to the exhibit.

	A	B	C	D	E	F	G	H	I
2	Build Code	Assembled Units	From Device RMU/Port	Connects to Unit	To Switch RMU/Port				
1452	2D E3 S G/GS	Gateway - 1	E5	VSP4K1	P1	1 - P1	G4501 - E5	10	Gray
1454	2D E3 S G/GS	VSP 4800 - 2	P3	VSP4K1	P3	1 - P3	4k2 - P3	10	Gray
1455	2D E3 S G/GS	VSP 4800 - 2	P4	VSP4K1	P4	1 - P4	4k2 - P4	10	Gray
1456	2D E3 S G/GS	VSP 4800 - 2	P5	VSP4K1	P5	1 - P5	4k2 - P5	10	Gray
1457	2D E3 S G/GS	VSP 4800 - 2	P6	VSP4K1	P6	1 - P6	4k2 - P6	10	Gray
1458	2D E3 S G/GS	VSP 4800 - 2	P7	VSP4K1	P7	1 - P7	4k2 - P7	10	Gray
1459	2D E3 S G/GS	VSP 4800 - 2	P8	VSP4K1	P8	1 - P8	4k2 - P8	10	Gray
1460	2D E3 S G/GS	VSP 4800 - 2	P6	VSP4K1	P9	1 - P9	4k2 - P9	10	Gray
1461	2D E3 S G/GS	VSP 4800 - 2	P10	VSP4K1	P10	1 - P10	4k2 - P10	10	Gray
1462	2D E3 S G/GS	Server ACR - 1	N2	VSP4K1	P18	1 - P18	SVR01 - N2	15	Gray
1463	2D E3 S G/GS	Server ACR - 2	N2	VSP4K1	P19	1 - P19	SVR02 - N2	15	Gray
1469	2D E3 S G/GS	Server ACR - 1	N0	VSP4K1	P26	1 - P26	SVR01 - N0	15	Black
1470	2D E3 S G/GS	Server ACR - 2	N0	VSP4K1	P27	1 - P27	SVR02 - N0	15	Black
1476	2D E3 S G/GS	Server ACR - 1	IMM	VSP4K1	P35	1 - P35	SVR01 - IMM	15	Black
1482	2D E3 S G/GS	EMC Storage	SPA LAN	VSP4K1	P43	1 - P43	VNX - SPA LAN	15	Black
1485	2D E3 S G/GS	EMC Storage	SPA P0	VSP4K1	P50	1 - P50	VNX - SPA P0	5M	Aqua
1486	2D E3 S G/GS	Gateway - 1	E6	VSP4K2	P1	2 - P1	G4501 - E6	10	Gray
1488	2D E3 S G/GS	VSP 4800 - 1	P3	VSP4K2	P3	2 - P3	4k1 - P3	10	Gray
1489	2D E3 S G/GS	VSP 4800 - 1	P4	VSP4K2	P4	2 - P4	4k1 - P4	10	Gray
<div style="display: flex; justify-content: space-between; align-items: center;"> <span>◀ ▶ ...</span> <span style="border: 1px solid green; padding: 2px;">Switch Wiring</span> <span>Power Cord Wiring</span> <span>Serial Numbers</span> <span>Software Versions</span> <span>Licenses</span> <span>Calc</span> <span>Customer Questionnaire</span> <span>Network Data</span> </div>									

An Administrator notices that a Service Status Warning is being received by Avaya Orchestrator indicating that port 27 on VSP 4850-1 is down.

Based on the contents of the Customer and Network Lifecycle Workbook in the exhibit, which equipment is connected to this port?

- A. VSP4K1, port 27
- B. Server/ACR-2, Interface NO
- C. Server/ACR-1, Interface NO
- D. VSP4K1, Port 26

Correct Answer: A

**QUESTION 3**

How can the administrator check the status of all services being monitored by Avaya Orchestrator?

- A. It is not possible. Services are displayed on a per-Host basis only.

- B. By navigating to Quick View-All Service Problems.
- C. By navigating to Details-Service Status.
- D. By navigating to ACP 4200 Configuration Wizard-Service.

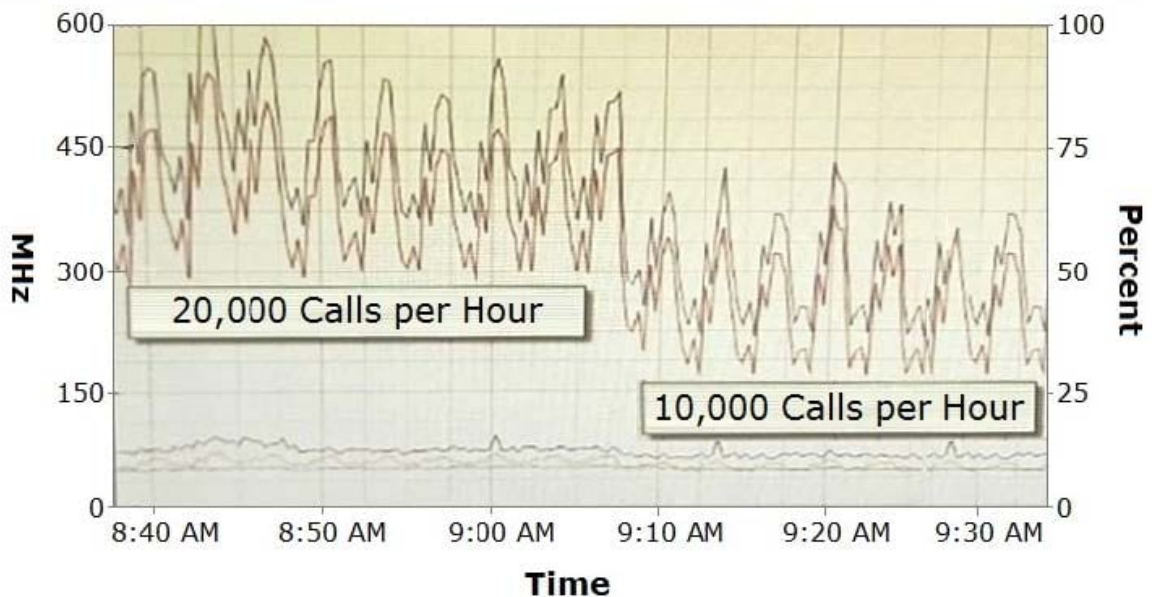
Correct Answer: B

Reference: <https://downloads.avaya.com/css/P8/documents/101061680>

**QUESTION 4**

Refer to the exhibit.

**CPU/Real-time, 2/15/2013 8:37:49 AM - 2/15/2013 9:37:49 AM - cpodCM1**



**Performance Chart Legend**

Key	Object	Measurement	Rollup	Units
<span style="color: blue;">■</span>	0	Usage in MHz	average	MHz
<span style="color: red;">■</span>	1	Usage in MHz	average	MHz
<span style="color: yellow;">■</span>	cpodCM1	Usage	average	Percent
<span style="color: lightblue;">■</span>	cpodCM1	Usage in MHz	average	MHz
<span style="color: green;">■</span>	2	Usage in MHz	average	MHz

The CPU performance of Communication Manager (CM) shows a significant difference depending on the call rates.

Which statement about making configuration changes is true?

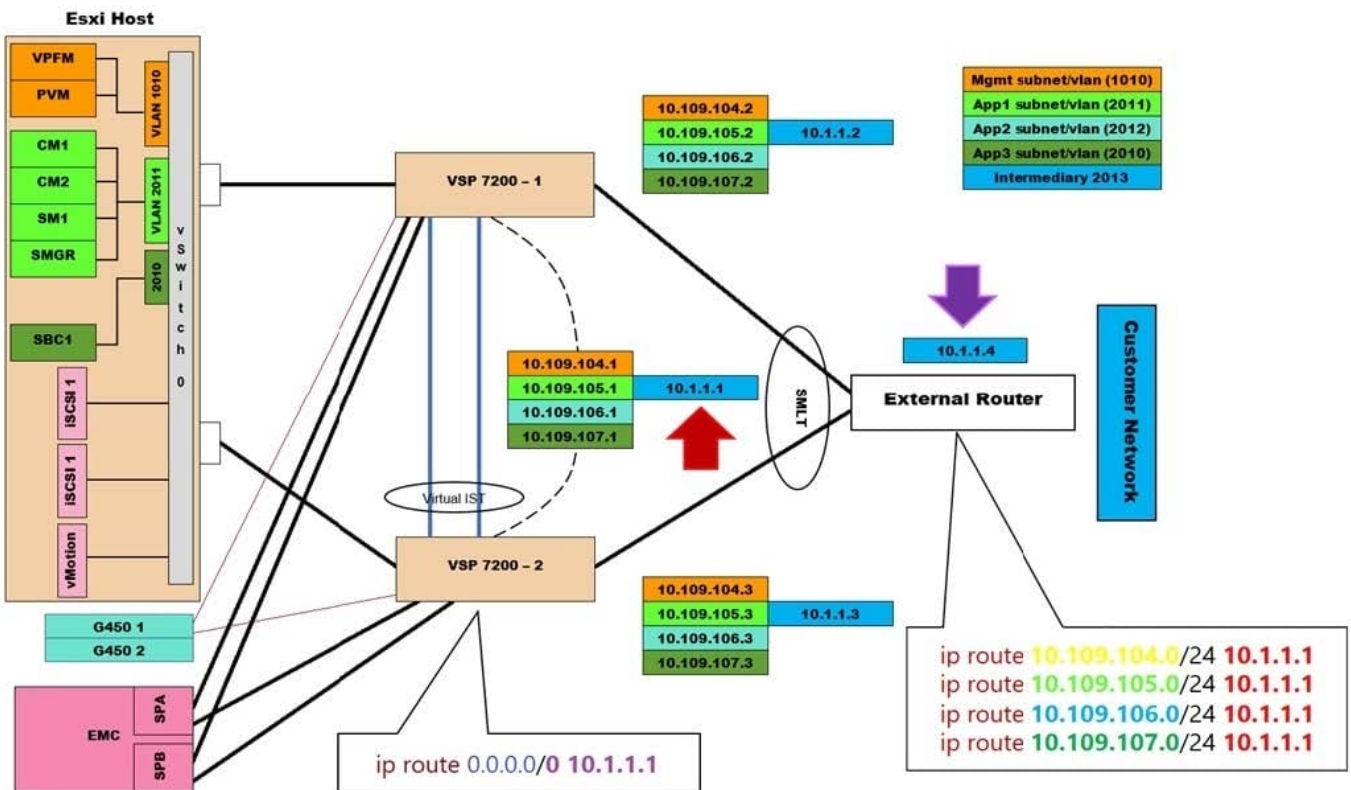
- A. Increasing the number of Virtual CPUs allocated to CM might help to reduce this difference.

- B. Ensuring that a secondary CM is available to allow for load-balancing might help to reduce this difference.
- C. Migrating the CM Virtual Machine to another ESXi host that is less busy might help to reduce this difference.
- D. Reducing this difference is not necessary because this is expected behavior.

Correct Answer: B

**QUESTION 5**

Refer to the exhibit.



What does the IP address 10.1.1.1 represent?

- A. The IP address of the EMC storage
- B. The SMLT IP address of the two VSP 7200 switches
- C. The Virtual IST IP address of the two VSP 7200 switches
- D. The VRRP IP address of the two VSP 7200 switches

Correct Answer: D