

830-01^{Q&As}

RCPE Certified Professional WAN Optimization

Pass Riverbed 830-01 Exam with 100% Guarantee

Free Download Real Questions & Answers **PDF** and **VCE** file from:

<https://www.pass2lead.com/830-01.html>

100% Passing Guarantee
100% Money Back Assurance

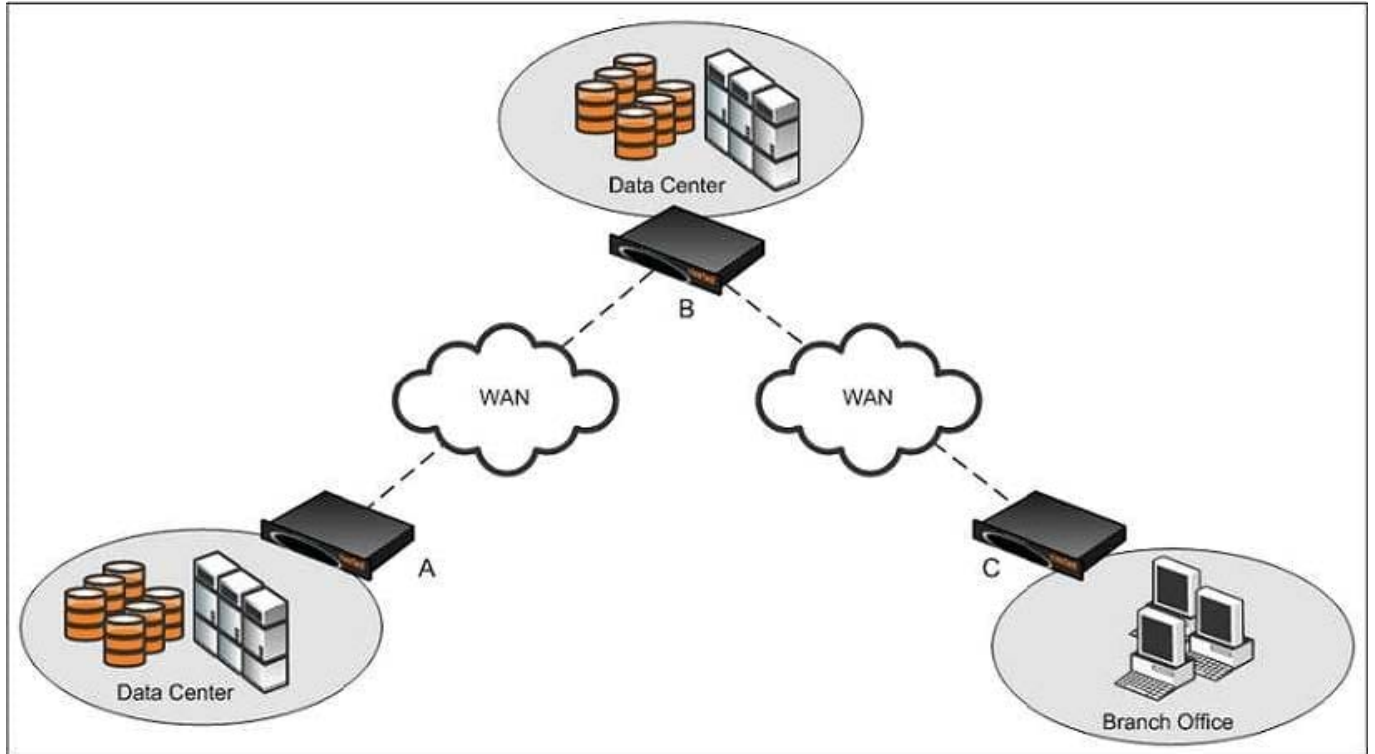
Following Questions and Answers are all new published by Riverbed
Official Exam Center

- ⚙️ **Instant Download** After Purchase
- ⚙️ **100% Money Back** Guarantee
- ⚙️ **365 Days** Free Update
- ⚙️ **800,000+** Satisfied Customers



QUESTION 1

Refer to the exhibit.



In order to achieve optimization using auto-discovery for traffic coming from site C and destined to site A in the exhibit, which configuration below would be required?

- A. In-path fixed-target rule on site B Steelhead appliance pointing to Site A Steelhead appliance
- B. Peering rule on site B Steelhead appliance passing through probes from site C
- C. Peering rule on site B Steelhead appliance passing through probe responses from site A
- D. Both A and C
- E. Both B and C

Correct Answer: B

QUESTION 2

Which of the following reports are available on the CMC appliance? (Select 4)

- A. Optimized Throughput
- B. Traffic Summary
- C. Current Connections

- D. Connection History
- E. Data Store Hit Rate

Correct Answer: ABDE

QUESTION 3

Two Steelhead appliances deployed in-path at different offices cannot auto-discover each other. What technique can be used to "force" the two Steelhead appliances to optimize traffic between each other?

- A. Change the TCP port the Steelhead appliances use for their in-path connections to 7810
- B. Disable the auto-discovery feature on the Steelhead appliances
- C. Create auto-discovery rules that map to each Steelhead appliance's in-path IP address
- D. Create fixed-target rules on each Steelhead appliance using the in-path IP address of the other Steelhead appliance, and use port 7800
- E. Use the "enable probe" command from the CLI

Correct Answer: D

QUESTION 4

After upgrading the Steelhead Mobile Controller to the latest software release, it requires a reboot. During the reboot, what would happen to the users connected to the Steelhead Mobile Controller via the Steelhead Mobile client?

- A. All optimization ceases to function
- B. Existing connections are reset, but subsequent connections will be optimized
- C. The Steelhead Mobile client informs the user to reboot their computer
- D. No disruption to the end user
- E. Only Layer 7 optimization is affected; all other optimization remain unaffected

Correct Answer: D

QUESTION 5

Connection pooling feature on RiOS pre-establishes:

- A. 25 inner channel connections between each pair of Steelhead appliances.
- B. 20 inner channel connections between data center and branch Steelhead appliances.
- C. 20 inner channel connections between each pair of Steelhead appliances.

D. 15 inner channel connections between each pair of Steelhead appliances.

E. 20 outer channel connections between server and server-side Steelhead appliances.

Correct Answer: C

[830-01 PDF Dumps](#)

[830-01 Study Guide](#)

[830-01 Braindumps](#)