

9A0-142^{Q&As}

Adobe InDesign CS5 ACE Exam

Pass Adobe 9A0-142 Exam with 100% Guarantee

Free Download Real Questions & Answers **PDF** and **VCE** file from:

<https://www.pass2lead.com/9a0-142.html>

100% Passing Guarantee
100% Money Back Assurance

Following Questions and Answers are all new published by Adobe
Official Exam Center

-  **Instant Download** After Purchase
-  **100% Money Back** Guarantee
-  **365 Days** Free Update
-  **800,000+** Satisfied Customers



QUESTION 1

Which of the following formats are NOT supported by InDesign? Each correct answer represents a complete solution. Choose all that apply.

- A. AutoCAD Document Exchange Format (DXF)
- B. Computer Graphics Metafile (CGM)
- C. CorelDraw
- D. DrawCorel

Correct Answer: ABC

The following formats are not supported by InDesign:

- 1.AutoCAD Document Exchange Format (DXF)
 - 2.Computer Graphics Metafile (CGM)
 - 3.CorelDraw
 - 4.Eastman Kodak\'\'s Photo CD
 - 5.Scalable Vector Graphics (SVG)
-

QUESTION 2

You have created a table in your InDesign document. You want to paste a graphic in a cell of the table. To accomplish this task you have selected the cell by pressing Esc key and then pasted the graphic.

What will happen?

- A. The cell will be eliminated from the table.
- B. The graphic will be pasted in the more than one cell in the table.
- C. The graphic will not be pasted in the cell.
- D. The graphic will be pasted in the cell.

Correct Answer: C

You should place a graphic in a table cell in exactly the same way as you insert a graphic in text. Click the Type tool in a cell, or select some text inside a cell, then place a file or paste a graphic that you copied to the Clipboard. You must select text or have an active text insertion point because selecting the cell itself will not get the graphic into the cell. In the above scenario you selected only the cell and not the text inside the cell; this is why graphic is not pasted in the table cell.

QUESTION 3

Which of the following options will you use to prevent selected text from breaking across a line?

- A. Nonbreaking space
- B. No Break
- C. Hyphenation Settings
- D. Discretionary hyphens

Correct Answer: B

Choose No Break option from the Character panel menu to prevent selected text from breaking across a line.

Answer: D is incorrect. Discretionary hyphens option prevents the common typographic problem of hyphenated words.

Answer: A is incorrect. Nonbreaking space option is used between words you want to keep together.

Answer: C is incorrect. Hyphenation Settings can be chosen from the Paragraph panel menu to change hyphenation settings.

QUESTION 4

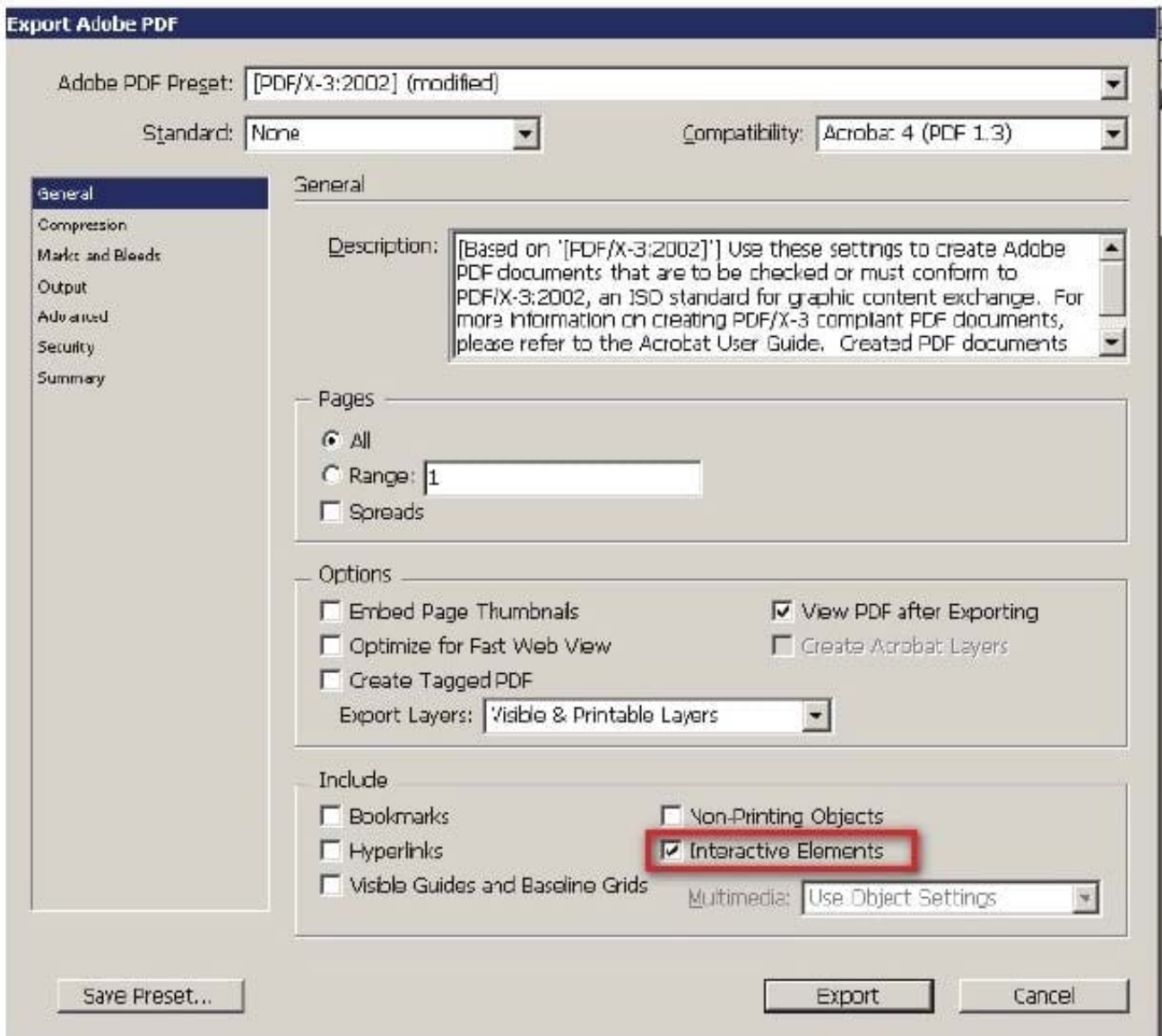
You are creating a newsletter in InDesign. You have applied page transitions on several pages of this document.

What will you do to include page transitions when you export the PDF document?

- A. Select the Bookmarks option in the Export PDF dialog box.
- B. Select the Non-Printing Objects option in the Export PDF dialog box.
- C. Select the Interactive Elements option in the Export PDF dialog box.
- D. Select the Embed Page Thumbnails option in the Export PDF dialog box.

Correct Answer: C

To include page transitions when you export the PDF document, you have to select the Interactive Elements option in the Export PDF dialog box. The following diagram shows the Interactive Elements option in the Export PDF dialog box.



Answer: D is incorrect. Select this option to create a thumbnail preview for each page being exported. Adding thumbnails increases the PDF file size.

Answer: A is incorrect. Select this option to create bookmarks for table of contents entries, preserving the TOC levels. Bookmarks are created from the information specified in the Bookmarks panel.

Answer: B is incorrect. Select this option to export objects to which you have applied the Non- Printing option in the Attributes panel.

QUESTION 5

Fill in the blank with the appropriate feature of InDesign CS5. allows search and replace operations that are based on regular expressions and not on the literal text in InDesign CS5.

Correct Answer: GREP

GREP stands for General Regular Expression Parser. GREP allows search and replace operations that are based on

regular expression (regular expression means describing pattern or conditions within text, need not necessarily include one word or character of actual text) not on literal text. To open GREP, Choose Edit >Find/Change, and then click the GREP tab. On the GREP tab of the Find/Change dialog box, GREP expressions can be constructed to find alphanumeric strings and patterns in long documents or many open documents. GREP searches are case-sensitive by default.

[9A0-142 VCE Dumps](#)

[9A0-142 Practice Test](#)

[9A0-142 Exam Questions](#)