

9L0-422^{Q&As}

OS X Support Essentials 10.10

Pass Apple 9L0-422 Exam with 100% Guarantee

Free Download Real Questions & Answers **PDF** and **VCE** file from:

<https://www.pass2lead.com/9l0-422.html>

100% Passing Guarantee
100% Money Back Assurance

Following Questions and Answers are all new published by Apple
Official Exam Center

-  **Instant Download** After Purchase
-  **100% Money Back** Guarantee
-  **365 Days** Free Update
-  **800,000+** Satisfied Customers



QUESTION 1

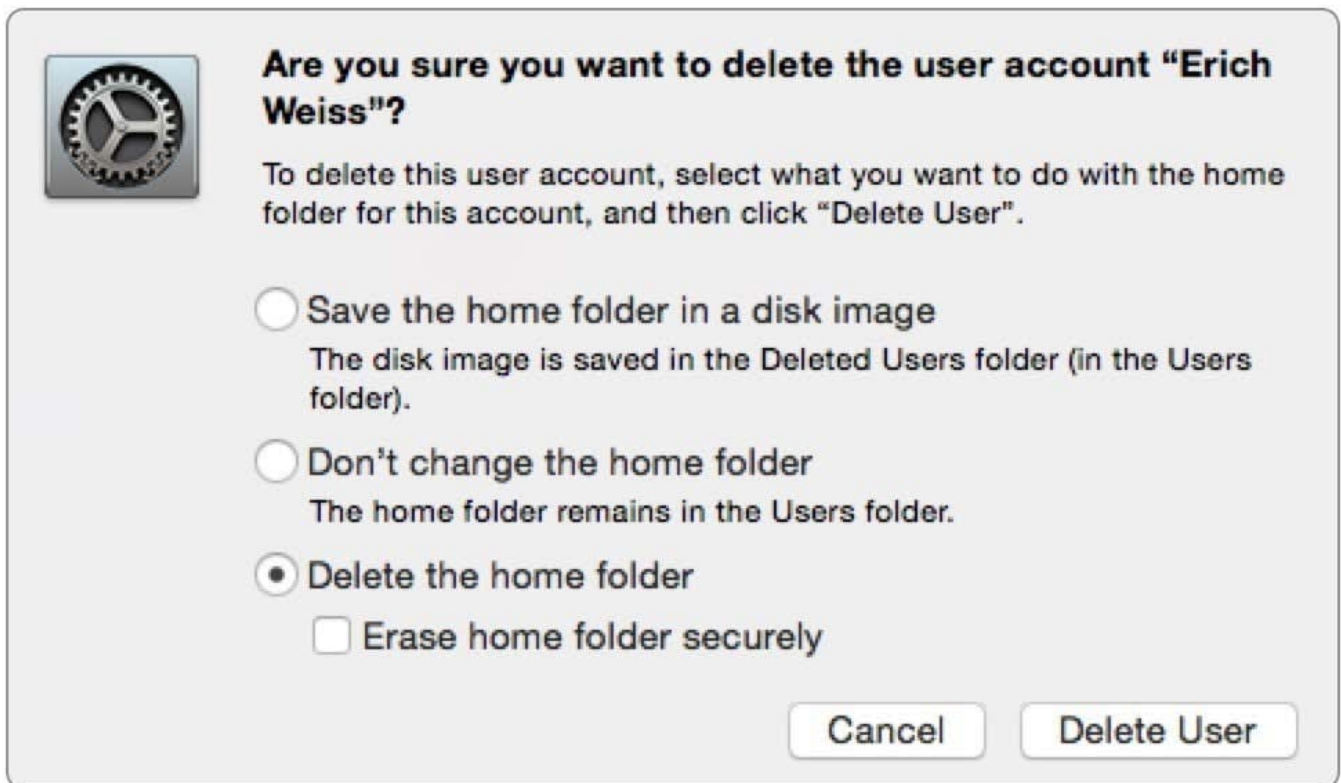
Which process can you use to start up a Mac in target disk mode?

- A. Start up from the OS X Recovery partition, choose Target Disk Mode from the Startup Disk menu, then restart the Mac.
- B. Hold down the S key as the Mac starts up, then enter the command shutdown -r -target.
- C. Restart your Mac, then hold down the T key as the Mac starts up.
- D. Hold down the Option key as the Mac starts up, until a dialog appears, then select Target Disk Mode from the dialog.

Correct Answer: C

QUESTION 2

Review the screenshot, then answer the question below.



If you click Delete User in the dialog shown above, what will happen to Erich's home folder?

- A. It will be renamed Deleted compressed and encrypted, and archived in Time Machine.
- B. It will be moved to the Trash.
- C. It will be deleted immediately, without being moved to the Trash.

D. It will be renamed Deleted, and the folder's permissions will be changed to allow administrator user access only.

Correct Answer: C

QUESTION 3

You're logged in to a Mac as a standard user.

How can you display the OS X Yosemite build number?

- A. Choose About This Mac from the Apple menu, then click the OS X version number to reveal the build number.
- B. In the General pane of System Preferences, click the Info disclosure triangle to reveal the build number.
- C. Type build number in Spotlight, then scroll through the results until the build number appears.
- D. Choose Software Update from the Apple menu, then choose Build Number from the Update menu.

Correct Answer: A

QUESTION 4

Which statement is true of ALL THREE buses: USB, FireWire, and Thunderbolt?

- A. The bus can host at least 64 peripherals.
- B. The bus can operate at speeds of at least 4 Gbps.
- C. An Intel-based Mac can use the bus to start up in target disk mode.
- D. An Intel-based Mac can use the bus to start up from a disk.

Correct Answer: D

QUESTION 5

Review the screenshot, then answer the question below.



You connect a Mac OS Extended (Journaled)-formatted FireWire disk to a Mac configured as shown in the screenshot. What will happen the next time a standard user attempts to mount the hard disk?

- A. The disk will mount, and the user will be able to read, modify, and delete any file on the disk.
- B. The disk will mount, and the user will be able to read any file on the disk. The user will be required to enter an administrator password to modify or delete files on the disk.
- C. The user will be required to enter an administrator password to mount the disk. After the disk is mounted, the user will be able to read, modify, and delete any file on the disk.
- D. The user will be required to enter an administrator password to mount the disk. After the disk is mounted, the user will be able to read any file on the disk but be required to reenter an administrator password to modify or delete files.

Correct Answer: A

[9L0-422 Practice Test](#)

[9L0-422 Study Guide](#)

[9L0-422 Braindumps](#)