

A30-327^{Q&As}

AccessData Certified Examiner

Pass AccessData A30-327 Exam with 100% Guarantee

Free Download Real Questions & Answers **PDF** and **VCE** file from:

<https://www.pass2lead.com/a30-327.html>

100% Passing Guarantee
100% Money Back Assurance

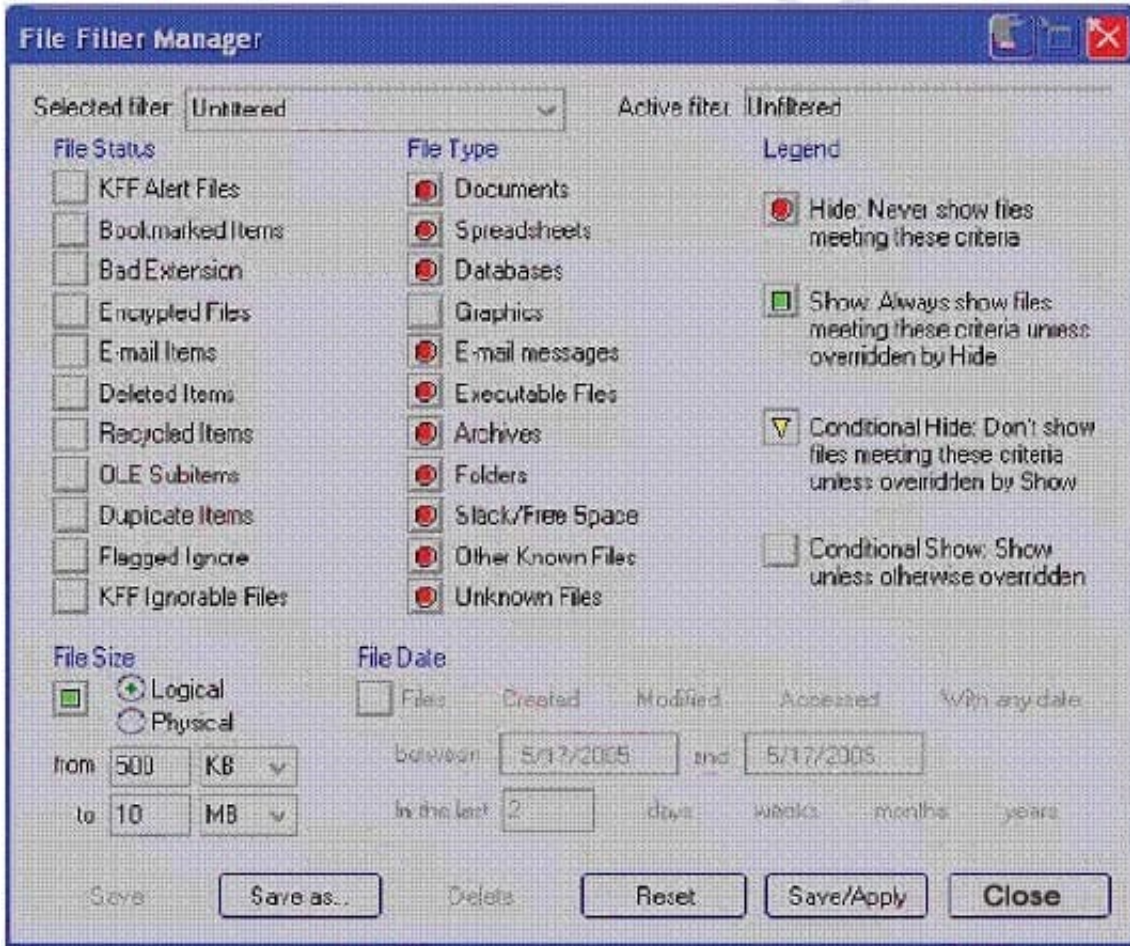
Following Questions and Answers are all new published by AccessData
Official Exam Center

- ⚙️ **Instant Download** After Purchase
- ⚙️ **100% Money Back** Guarantee
- ⚙️ **365 Days** Free Update
- ⚙️ **800,000+** Satisfied Customers



QUESTION 1

Click the Exhibit button.



What change do you make to the file filter shown in the exhibit in order to show only graphics with a logical size between 500 kilobytes and 10 megabytes?

- A. You change all file status items to a red circle.
- B. You change all file status items to a yellow triangle.
- C. You make no change. The filter is correct as shown.
- D. You change Graphics in the File Type column to a yellow triangle.

Correct Answer: D

QUESTION 2

When previewing a physical drive on a local machine with FTK Imager, which statement is true?

- A. FTK Imager can block calls to interrupt 13h and prevent writes to suspect media.
- B. FTK Imager can operate from a USB drive, thus preventing writes to suspect media.
- C. FTK Imager can operate via a DOS boot disk, thus preventing writes to suspect media.
- D. FTK Imager should always be used in conjunction with a hardware write protect device to prevent writes to suspect media.

Correct Answer: D

QUESTION 3

While analyzing unallocated space, you locate what appears to be a 64-bit Windows date and time. Which FTK Imager feature allows you display the information as a date and time?

- A. INFO2 Filter
- B. Base Converter
- C. Metadata Parser
- D. Hex Value Interpreter

Correct Answer: D

QUESTION 4

You view a registry file in Registry Viewer. You want to create a report, which includes items that you have marked "Add to Report." Which Registry Viewer option accomplishes this task?

- A. Common Areas
- B. Generate Report
- C. Define Summary Report
- D. Manage Summary Reports

Correct Answer: B

QUESTION 5

Which statement is true about Processes to Perform in FTK?

- A. Processing options can be chosen only when adding evidence.
- B. Processing options can be chosen during or after adding evidence.
- C. Processing options can be chosen only after evidence has been added.
- D. If processing is not performed while adding evidence, the case must be started again.

Correct Answer: B

[Latest A30-327 Dumps](#)

[A30-327 VCE Dumps](#)

[A30-327 Study Guide](#)