

A30-327^{Q&As}

AccessData Certified Examiner

Pass AccessData A30-327 Exam with 100% Guarantee

Free Download Real Questions & Answers **PDF** and **VCE** file from:

<https://www.pass2lead.com/a30-327.html>

100% Passing Guarantee
100% Money Back Assurance

Following Questions and Answers are all new published by AccessData Official Exam Center

- ⚙️ **Instant Download** After Purchase
- ⚙️ **100% Money Back** Guarantee
- ⚙️ **365 Days** Free Update
- ⚙️ **800,000+** Satisfied Customers



QUESTION 1

What is the most effective method to facilitate successful password recovery?

- A. Art of War
- B. Entropy Test
- C. Advanced EFS Attack
- D. Primary Dictionary Attack

Correct Answer: A

QUESTION 2

You create two evidence images from the suspect's drive: suspect.E01 and suspect.001.

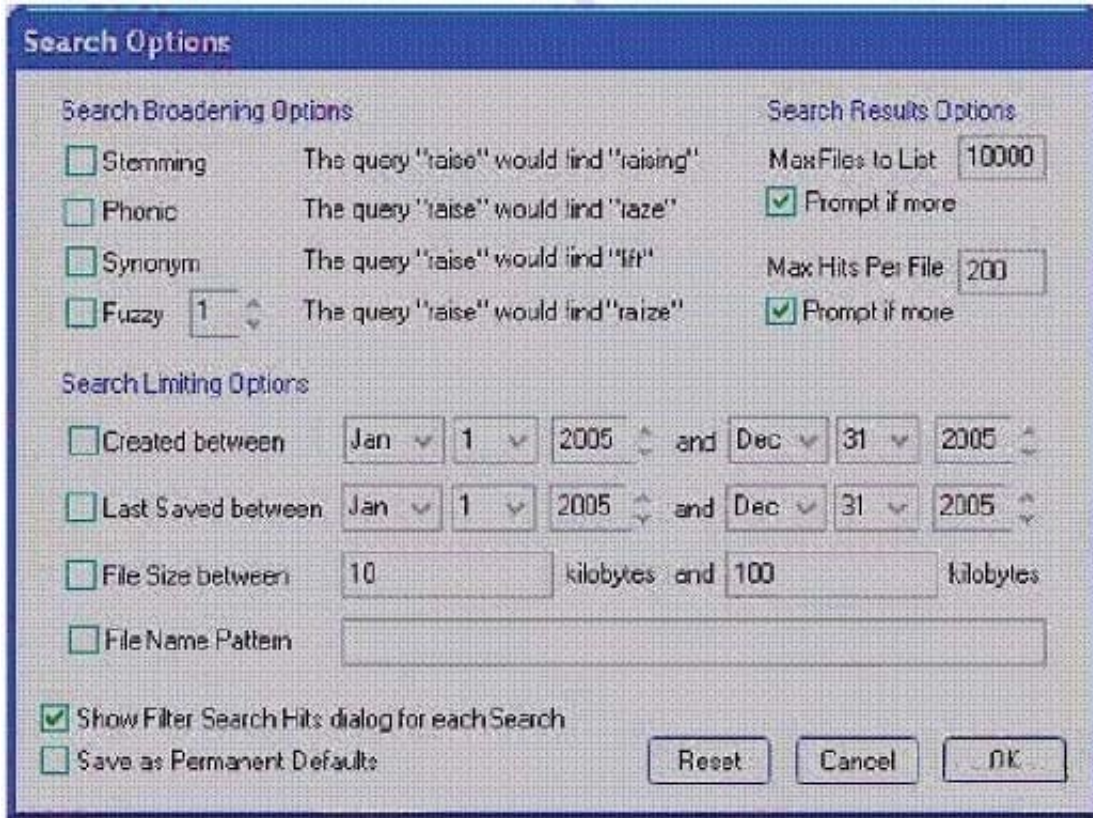
You want to be able to verify that the image hash values are the same for suspect.E01 and suspect.001 image files. Which file has the hash value for the Raw (dd) image?

- A. suspect.001.txt
- B. suspect.E01.txt
- C. suspect.001.csv
- D. suspect.E01.csv

Correct Answer: A

QUESTION 3

Click the Exhibit button.



You need to search for specific data that are located in a Microsoft Word document. You do not know the exact spelling of this data. Using the Index Search Options as displayed in the exhibit, which changes do you make in the Broadening Options and Search Limiting Options containers?

- A. check the Fuzzy box; check the File Name Pattern box; type *.doc in the pattern container
- B. check the Stemming box; check the File Name Pattern box; type *.doc in the pattern container
- C. check the Synonym box; check the File Name Pattern box; type *.doc in the pattern container
- D. check the Stemming box; check the File Name Pattern box; type %.doc in the pattern container

Correct Answer: A

QUESTION 4

You used FTK Imager to create several hash list files. You view the location where the files were exported. What is the file extension type for these files?

- A. .txt = ASCII Text File
- B. .dif = Data Interchange Format
- C. .prn = Formatted Text Delimited
- D. .csv = Comma Separated Values

Correct Answer: D

QUESTION 5

Which two image formats contain an embedded hash value for file verification? (Choose two.)

- A. E01
- B. S01
- C. ISO
- D. CUE
- E. 001 (dd)

Correct Answer: AB

[A30-327 VCE Dumps](#)

[A30-327 Practice Test](#)

[A30-327 Study Guide](#)