

A30-327^{Q&As}

AccessData Certified Examiner

Pass AccessData A30-327 Exam with 100% Guarantee

Free Download Real Questions & Answers **PDF** and **VCE** file from:

<https://www.pass2lead.com/a30-327.html>

100% Passing Guarantee
100% Money Back Assurance

Following Questions and Answers are all new published by AccessData Official Exam Center

- ⚙️ **Instant Download** After Purchase
- ⚙️ **100% Money Back** Guarantee
- ⚙️ **365 Days** Free Update
- ⚙️ **800,000+** Satisfied Customers



QUESTION 1

How can you use FTK Imager to obtain registry files from a live system?

- A. You use the Export Files option.
- B. You use the Advanced Recovery option.
- C. Registry files cannot be exported from a live system.
- D. You use the Protected Storage System Provider option.

Correct Answer: A

QUESTION 2

Which two statements are true? (Choose two.)

- A. PRTK can recover Windows logon passwords.
- B. PRTK must run in conjunction with DNA workers to decrypt EFS files.
- C. PRTK and FTK must be installed on the same machine to decrypt EFS files.
- D. EFS files must be exported from a case and provided to PRTK for decryption.

Correct Answer: AC

QUESTION 3

Which statement is true about using FTK Imager to simultaneously create multiple images of a single source?

- A. In the Image Creation Wizard, you should select the Add Additional Drives option.
- B. You should use the Create Multiple Images option to create server image objects.
- C. You should note the evidence item source signature and add it to the Image View pane.
- D. In the Image Creation Wizard, you should add multiple destination jobs from the same source prior To beginning image creation.

Correct Answer: D

QUESTION 4

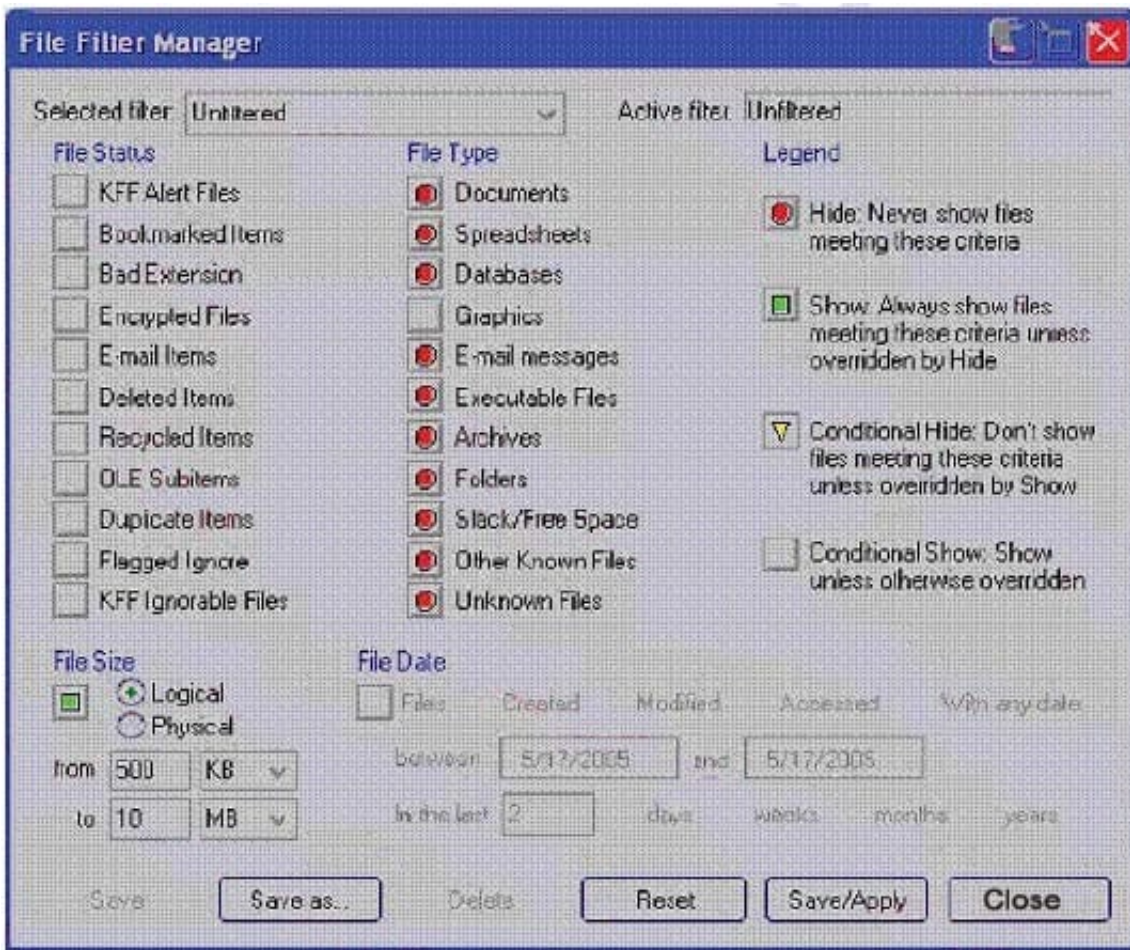
You used FTK Imager to create several hash list files. You view the location where the files were exported. What is the file extension type for these files?

- A. .txt = ASCII Text File
- B. .dif = Data Interchange Format
- C. .prn = Formatted Text Delimited
- D. .csv = Comma Separated Values

Correct Answer: D

QUESTION 5

Click the Exhibit button.



What change do you make to the file filter shown in the exhibit in order to show only graphics with a logical size between 500 kilobytes and 10 megabytes?

- A. You change all file status items to a red circle.
- B. You change all file status items to a yellow triangle.
- C. You make no change. The filter is correct as shown.
- D. You change Graphics in the File Type column to a yellow triangle.

Correct Answer: D

[Latest A30-327 Dumps](#)

[A30-327 Study Guide](#)

[A30-327 Braindumps](#)