

BH0-013^{Q&As}

Foundation Certificate in Business Analysis

Pass ISEB BH0-013 Exam with 100% Guarantee

Free Download Real Questions & Answers **PDF** and **VCE** file from:

<https://www.pass2lead.com/bh0-013.html>

100% Passing Guarantee
100% Money Back Assurance

Following Questions and Answers are all new published by ISEB
Official Exam Center

-  **Instant Download** After Purchase
-  **100% Money Back** Guarantee
-  **365 Days** Free Update
-  **800,000+** Satisfied Customers



QUESTION 1

A business analyst has identified that one of the use cases on a use case diagram contains a large amount of optional processing. This optional processing is so large that he has decided to remove it to a separate use case which can be called by the original use case if required. How should the original use case be linked to the new use case?

- A. By a broken, arrowed line stereotyped with the word .
- B. By a broken, arrowed line stereotyped with the word .
- C. By a solid line with no arrowhead or stereotype.
- D. By a broken, arrowed line stereotyped with the word .

Correct Answer: D

QUESTION 2

Which of the following diagrams explicitly shows the sequence of tasks?

- A. A swim-lane diagram.
- B. A use case diagram.
- C. A business activity model.
- D. A class model.

Correct Answer: A

QUESTION 3

Which of the following only includes explicit corporate knowledge?

- A. Skills, values, communities of practice.
- B. Job descriptions, tasks, targets.
- C. Culture, norms, historical data.
- D. Style guides, procedures, processes.

Correct Answer: D

QUESTION 4

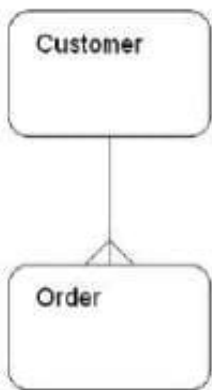
What does the O\\' stand for in the CATVVOE analysis?

- A. The objectives of the business system under review.
- B. The opportunities for change in the business system under review.
- C. The organisation of the business system under review.
- D. The owner of the business system under review.

Correct Answer: D

QUESTION 5

The entity relationship model below shows the relationship between Customer and Order. Which of the following business rules is correct?



- A. An order may be placed by many customers.
- B. A customer may place many orders.
- C. A customer may never place an order.
- D. An order need not be placed by a customer.

Correct Answer: B