



C2020-625^{Q&As}

IBM Cognos 10 BI Data Warehouse Developer

Pass IBM C2020-625 Exam with 100% Guarantee

Free Download Real Questions & Answers **PDF** and **VCE** file from:

<https://www.pass4lead.com/C2020-625.html>

100% Passing Guarantee
100% Money Back Assurance

Following Questions and Answers are all new published by IBM Official Exam Center

-  **Instant Download** After Purchase
-  **100% Money Back** Guarantee
-  **365 Days** Free Update
-  **800,000+** Satisfied Customers





QUESTION 1

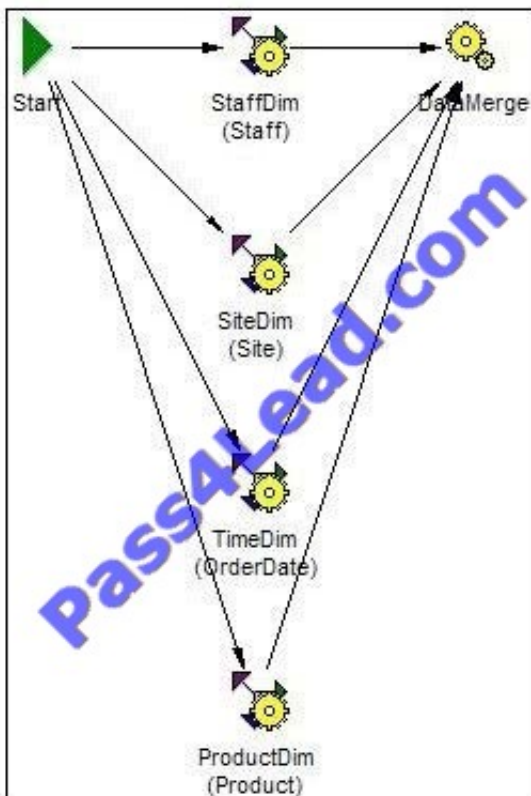
When executed, what will the following command line string do?"c:\program files\cognos\c8\bin\rundsjob.exe" -P "ODBC" "DSN=DS_Advanced;DBMS=(other)" "Inventory_Fact_Data" VTRACE_VALUES=PROGRESS,DETAIL,INTERNAL,SQL,EXECUTEDSQL,USER,VARIABLE

- A. Execute a fact build called Inventory_Fact_Data.
- B. Add tables (such as INTERNAL) to the Inventory_Fact_Data database.
- C. Execute a JobStream called Inventory_Fact_Data.
- D. Create a database called Inventory_Fact_Data and add a connection to it.

Correct Answer: C

QUESTION 2

In this JobStream, the action on failure setting for the SiteDim node has been set to TERMINATE.



What will happen if this node fails while the JobStream is executing?

- A. Data Manager will immediately stop processing the remaining dimension build nodes, and process the fact build node instead.

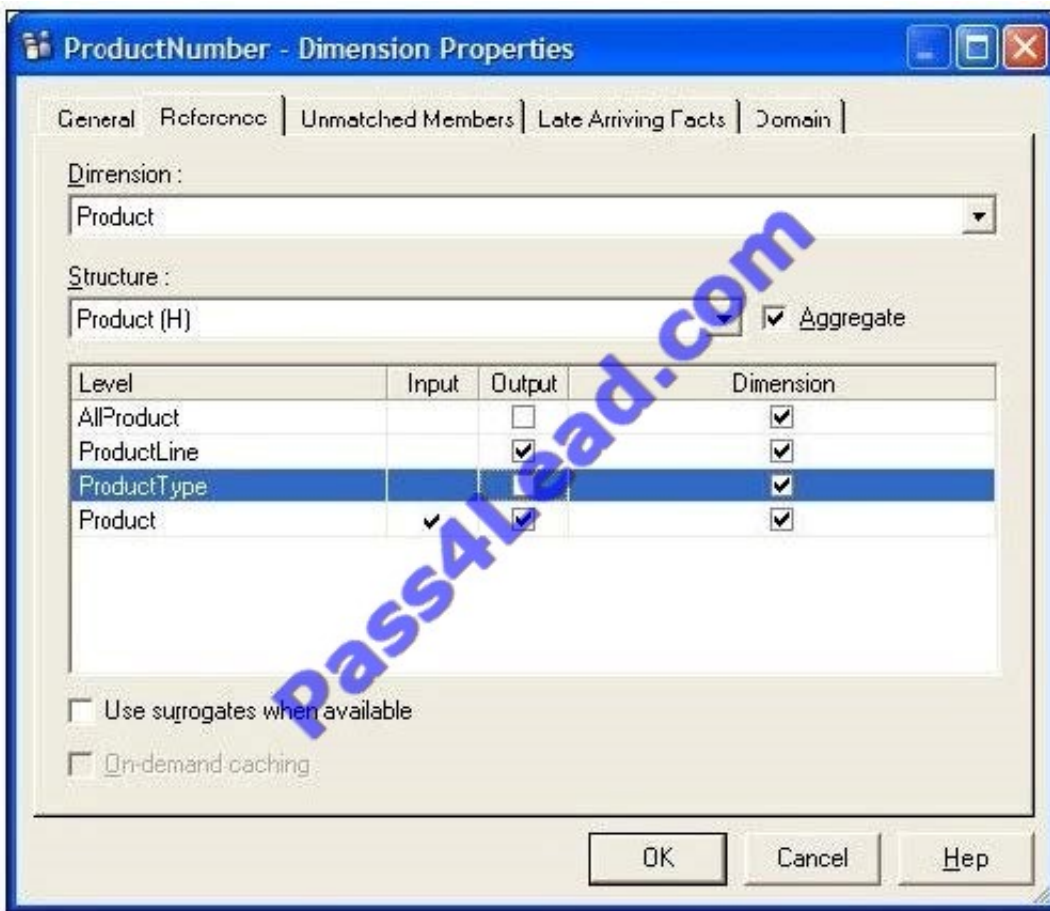


- B. Data Manager will stop processing the SiteDim node, but will continue to process the remaining dimension build nodes.
- C. Data Manager will stop all processing of all nodes in the JobStream, even if they are currently running.
- D. Data Manager will remove the SiteDim node from the JobStream and restart the execution process.

Correct Answer: B

QUESTION 3

Why has the developer selected the Output box for the ProductLine row?



- A. To create summary level rows.
- B. To merge duplicate rows of incoming data at the ProductLine level.
- C. To create detail level rows.
- D. To allow duplicate rows of incoming data at the ProductLine level.

Correct Answer: A



QUESTION 4

A fact build has been created that includes a Product Code dimension element. Each incoming product code must match a corresponding row in the Product dimension. What should the developer do?

- A. Create a second dimension element in the transformation model that will check for valid product codes.
- B. Create a lookup to the dimension and reference the lookup in the Product Code element.
- C. Create an attribute element in the transformation model that will check for valid product codes.
- D. Create a template and reference the template in the Product Code element.
- E. Create an output filter and reference the output filter in the Product Code element.

Correct Answer: B

QUESTION 5

A developer wants to move a selection of components from a development environment to a production environment. What should the developer do?

- A. Create a catalog backup file (.ctg).
- B. Create a JobStream to transfer the components..
- C. Create a package file (.pkg).
- D. Create a SQL script to transfer the components.

Correct Answer: C

[Latest C2020-625 Dumps](#)

[C2020-625 Practice Test](#)

[C2020-625 Braindumps](#)



To Read the [Whole Q&As](#), please purchase the [Complete Version](#) from [Our website](#).

Try our product !

100% Guaranteed Success

100% Money Back Guarantee

365 Days Free Update

Instant Download After Purchase

24x7 Customer Support

Average 99.9% Success Rate

More than 800,000 Satisfied Customers Worldwide

Multi-Platform capabilities - [Windows](#), [Mac](#), [Android](#), [iPhone](#), [iPod](#), [iPad](#), [Kindle](#)

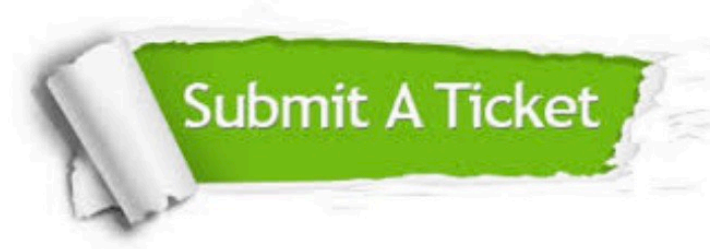
We provide exam PDF and VCE of Cisco, Microsoft, IBM, CompTIA, Oracle and other IT Certifications. You can view Vendor list of All Certification Exams offered:

<https://www.pass4lead.com/allproducts>

Need Help

Please provide as much detail as possible so we can best assist you.

To update a previously submitted ticket:



 <p>One Year Free Update Free update is available within One Year after your purchase. After One Year, you will get 50% discounts for updating. And we are proud to boast a 24/7 efficient Customer Support system via Email.</p>	 <p>Money Back Guarantee To ensure that you are spending on quality products, we provide 100% money back guarantee for 30 days from the date of purchase.</p>	 <p>Security & Privacy We respect customer privacy. We use McAfee's security service to provide you with utmost security for your personal information & peace of mind.</p>
---	---	--

Any charges made through this site will appear as Global Simulators Limited.

All trademarks are the property of their respective owners.

Copyright © pass4lead, All Rights Reserved.