



C2020-632^{Q&As}

IBM Cognos 10 BI Metadata Model Developer

Pass IBM C2020-632 Exam with 100% Guarantee

Free Download Real Questions & Answers **PDF** and **VCE** file from:

<https://www.pass4lead.com/C2020-632.html>

100% Passing Guarantee
100% Money Back Assurance

Following Questions and Answers are all new published by IBM Official Exam Center

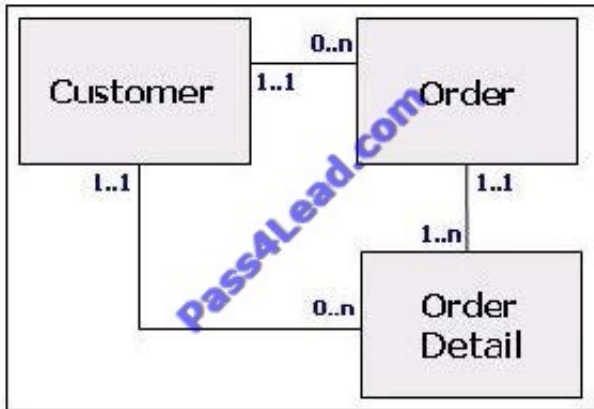
-  **Instant Download** After Purchase
-  **100% Money Back** Guarantee
-  **365 Days** Free Update
-  **800,000+** Satisfied Customers





QUESTION 1

In a transitive relationship scenario, what problems exist when reporting from the tables below?



- A. The Order table must be included in each query.
- B. The Order Detail table has conflicting cardinalities.
- C. The priority path must be defined.
- D. There is more than one possible path between the tables.

Correct Answer: D

QUESTION 2

In Framework Manager, which of the following is true about verifying your model?

- A. The entire model must be verified, individual objects cannot be verified.
- B. The model can only be verified through the Publish Packages wizard.
- C. The model can be verified from Cognos Connection or through the Publish Packages wizard.
- D. It is possible to select to automatically repair certain issues that have been detected.

Correct Answer: D

QUESTION 3

Which of the following is true for 0..n cardinality?

- A. The cardinality is optional and a union will be performed.
- B. The cardinality is optional and an inner join will be performed.



- C. The cardinality is optional and an outer join will be performed.
- D. The cardinality is required and an outer join will be performed.

Correct Answer: C

QUESTION 4

What technique can Framework Manager modelers use to implement a time dimension for models that lack a time dimension?

- A. Create relationships from date fields in one dimension to date fields in another dimension.
- B. Use parameter maps to map date values in one query subject to date values in another query subject.
- C. Use the Time Dimension wizard to generate a time dimension and create the appropriate relationships.
- D. Identify a time dimension table source, import into the model and create relationships to fact query subjects.

Correct Answer: D

QUESTION 5

Although modelers can use model query subjects to create entire business views, it is recommended to use them to do which of the following?

- A. Resolve conflicting keys and indexes and generate minimized SQL.
- B. Combine facts and dimensions for intuitive ad hoc business views.
- C. Resolve reporting traps and simplify snowflake tables through consolidation.
- D. Provide dimensional information through the use of determinants.

Correct Answer: C

[Latest C2020-632 Dumps](#)

[C2020-632 VCE Dumps](#)

[C2020-632 Study Guide](#)



To Read the [Whole Q&As](#), please purchase the [Complete Version](#) from [Our website](#).

Try our product !

100% Guaranteed Success

100% Money Back Guarantee

365 Days Free Update

Instant Download After Purchase

24x7 Customer Support

Average 99.9% Success Rate

More than 800,000 Satisfied Customers Worldwide

Multi-Platform capabilities - [Windows](#), [Mac](#), [Android](#), [iPhone](#), [iPod](#), [iPad](#), [Kindle](#)

We provide exam PDF and VCE of Cisco, Microsoft, IBM, CompTIA, Oracle and other IT Certifications. You can view Vendor list of All Certification Exams offered:

<https://www.pass4lead.com/allproducts>

Need Help

Please provide as much detail as possible so we can best assist you.

To update a previously submitted ticket:



 <p>One Year Free Update Free update is available within One Year after your purchase. After One Year, you will get 50% discounts for updating. And we are proud to boast a 24/7 efficient Customer Support system via Email.</p>	 <p>Money Back Guarantee To ensure that you are spending on quality products, we provide 100% money back guarantee for 30 days from the date of purchase.</p>	 <p>Security & Privacy We respect customer privacy. We use McAfee's security service to provide you with utmost security for your personal information & peace of mind.</p>
---	---	--

Any charges made through this site will appear as Global Simulators Limited.

All trademarks are the property of their respective owners.

Copyright © pass4lead, All Rights Reserved.