

E20-370^{Q&As}

Networked Storage - CAS Implementation





Pass EMC E20-370 Exam with 100% Guarantee

Free Download Real Questions & Answers **PDF** and **VCE** file from:

<https://www.pass2lead.com/e20-370.html>

100% Passing Guarantee
100% Money Back Assurance

Following Questions and Answers are all new published by EMC
Official Exam Center

-  **Instant Download** After Purchase
-  **100% Money Back** Guarantee
-  **365 Days** Free Update
-  **800,000+** Satisfied Customers



QUESTION 1

If a drive comes back online while a regeneration task is running there may be three copies of some data. What happens to the third copy?

- A. Placed in the regeneration buffer
- B. Remains as additional protection
- C. Removed by garbage collection
- D. Removed by organic regeneration

Correct Answer: D

QUESTION 2

A customer has a firewall between EMC Centera and the EMC Centera Console Server. EMC Centera is running 3.1.3 CentraStar code and is on CE+ mode. Which port must be opened for the Console Server to connect to the EMC Centera?

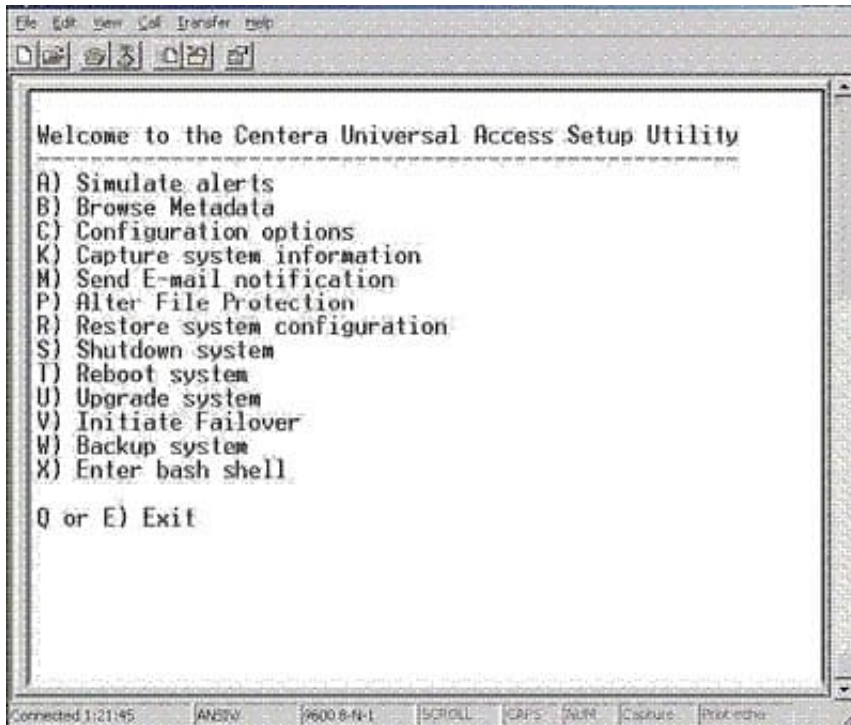
- A. A CE+ box cannot be remotely managed from a customer LAN
- B. Port 3218
- C. Port 3682
- D. Port 8080

Correct Answer: C

QUESTION 3

Click the Exhibit button.

Which menu choice will provide diagnostic data for EMC Support?



- A. Backup system
- B. Browse metadata
- C. Capture System Information
- D. Send E-mail notification

Correct Answer: C

QUESTION 4

What is the purpose of Centera Universal Access (CUA)?

- A. Interfaces non-native applications with Centera
- B. Provides an alternative data replication option for DR
- C. Provides optional encryption / decryption for objects stored on Centera
- D. Provides a centralized server for Centera management tools

Correct Answer: D

QUESTION 5

Which method does CUA use to write files 74 KB in size or less to EMC Centera?

- A. Bundled

B. CDF, BLOB

C. Containerized

D. Embedded BLOBs

Correct Answer: D

[Latest E20-370 Dumps](#)

[E20-370 VCE Dumps](#)

[E20-370 Exam Questions](#)