

E20-545^{Q&As}

VNX Solutions Specialist Exam for Technology Architects

Pass EMC E20-545 Exam with 100% Guarantee

Free Download Real Questions & Answers **PDF** and **VCE** file from:

<https://www.pass2lead.com/e20-545.html>

100% Passing Guarantee
100% Money Back Assurance

Following Questions and Answers are all new published by EMC
Official Exam Center

- ⚙️ **Instant Download** After Purchase
- ⚙️ **100% Money Back** Guarantee
- ⚙️ **365 Days** Free Update
- ⚙️ **800,000+** Satisfied Customers



QUESTION 1

A customer is planning to move VDM between Data Movers.

What needs to be verified on the destination Data Mover before the action is taken?

- A. The Data Mover contains no CIFS servers with same name as source
- B. The network device is identical to the source
- C. The file system sizes are identical to the source
- D. The network ports are identical to the source

Correct Answer: A

QUESTION 2

Which statement is a characteristic of tree quotas?

- A. A tree quota root directory cannot be a part of another tree quota.
- B. Tree quotas can be set on existing directories.
- C. A maximum of 16 tree quotas can be created on a single file system.
- D. Even root users are restricted by tree quotas.

Correct Answer: A

QUESTION 3

A VNX is configured with a primary and a standby Data Mover. What happens to the file systems exported from the primary Data Mover if the connected network fails?

- A. The VNX file systems are unavailable.
- B. The VNX file systems remain available with degraded performance.
- C. The standby Data Mover takes over operation. After network connection is re-established, operation fails back.
- D. The standby Data Mover takes over operation. After network connection is re-established, operation will not fail back.

Correct Answer: A

QUESTION 4

An NFS user currently has 30 MB of data stored in a personal directory on a VNX. Their quota allocation allows up to 100 MB. However, they are unable to store additional data in this personal directory.

The user deleted two of their largest files in an attempt to free up additional space, but was unable to save all new files to the VNX. The user called the VNX administrator, who confirmed that the file system has additional storage capacity.

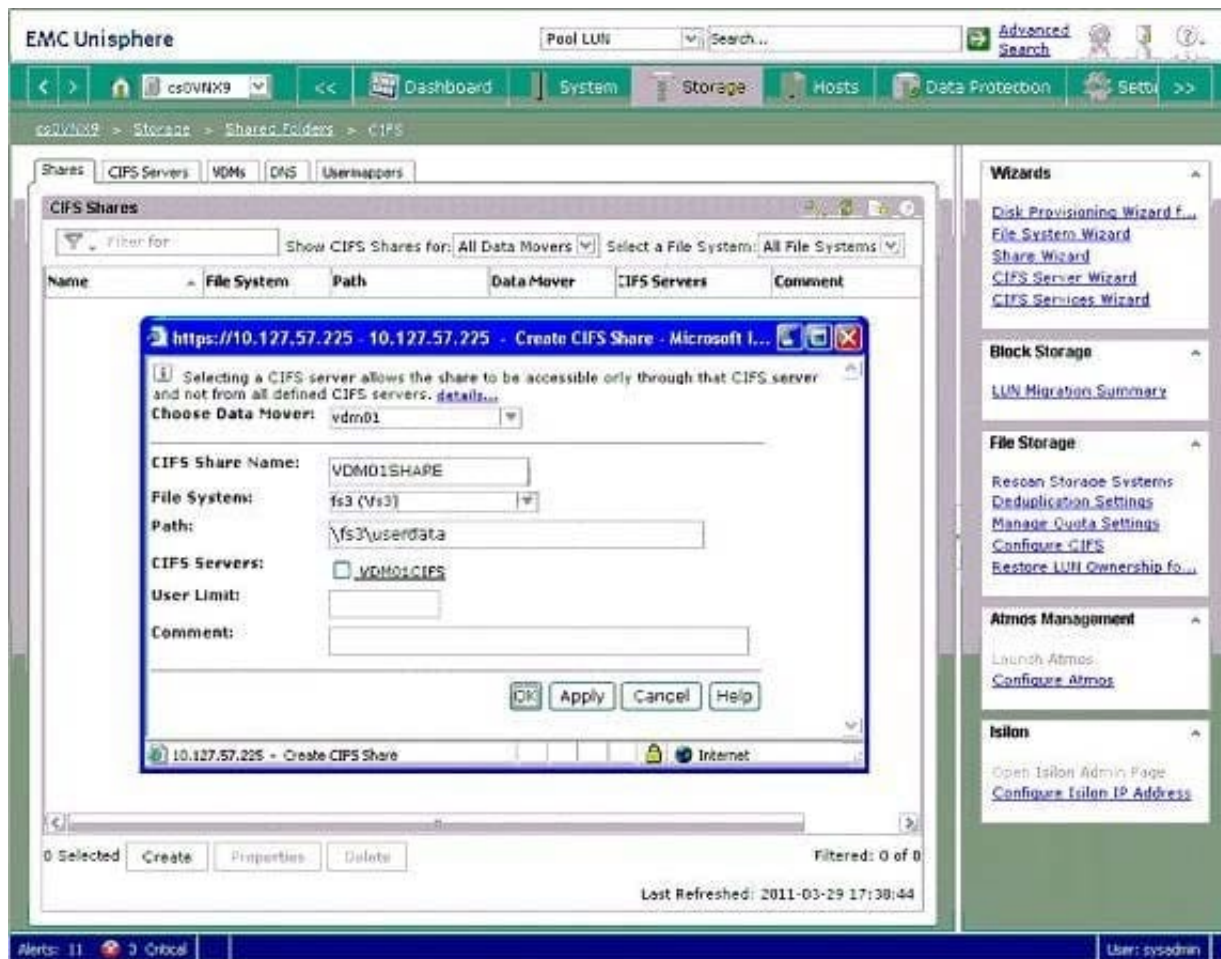
What could be the problem?

- A. The file system is mounted as read only.
- B. Transmission errors occurred when the user's data was sent over the network.
- C. The user has insufficient permissions to write new data to the desired location.
- D. A quota was set for the maximum number of files allowed.

Correct Answer: D

QUESTION 5

Refer to the exhibit.



Once you commit to create the share, what is the expected outcome?

- A. A local share on the VDM is created.
- B. A global share on the VDM is created.

C. A user share on the VDM is created.

D. A share is not created.

Correct Answer: B

[Latest E20-545 Dumps](#)

[E20-545 Practice Test](#)

[E20-545 Exam Questions](#)