

E20-598^{Q&As}

Backup and Recovery - Avamar Specialist Exam for Storage Administrators

Pass EMC E20-598 Exam with 100% Guarantee

Free Download Real Questions & Answers **PDF** and **VCE** file from:

<https://www.pass2lead.com/e20-598.html>

100% Passing Guarantee
100% Money Back Assurance

Following Questions and Answers are all new published by EMC
Official Exam Center

- ⚙️ **Instant Download** After Purchase
- ⚙️ **100% Money Back** Guarantee
- ⚙️ **365 Days** Free Update
- ⚙️ **800,000+** Satisfied Customers



QUESTION 1

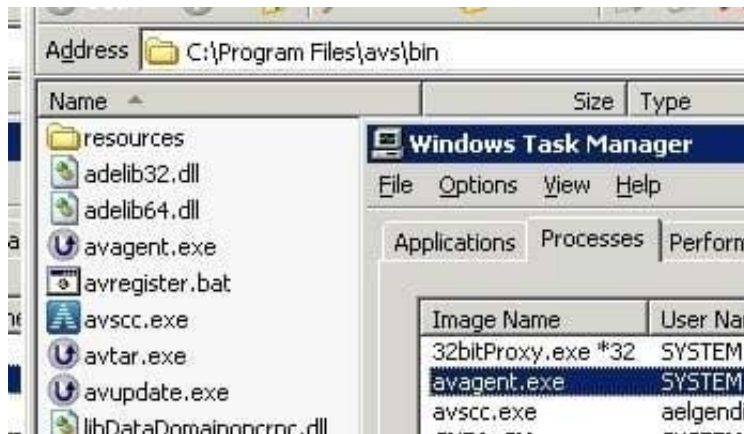
An EMC customer has a backup environment with the following characteristics: Multi node Avamar Data Store version 7.0 Image-level backups for VMs with VADP Integration with EMC Data Domain File system backups stored in Avamar Database and VM images backed up to Data Domain with Avamar

What benefit does the customer have with this setup?

- A. Database restores can be run from VM Image Backups
- B. VMs can be booted without restoring from backups
- C. File level restores from Data Domain are possible for all client OS
- D. Avamar checkpoints can be stored to a Data Domain

Correct Answer: B

QUESTION 2



Which administrative tasks can be performed using the EMC Avamar Enterprise Manager?

- A. Configure replication, run reports, and view operational status
- B. Configure backups, view operational status, and run reports
- C. Run reports, configure backups, and configure replication
- D. View operational status, configure replication, and configure backups

Correct Answer: A

Explanation/Reference:

	Avamar Enterprise Manager	Backup & Recovery Manager
Software host	Avamar utility node	VMware vSphere™ client
At-a-glance dashboard	Status view of Avamar systems	Select between consolidated and individual status views of: <ul style="list-style-type: none"> • Avamar systems • NetWorker servers • Data Domain backup targets
Detailed backup and capacity information for Avamar systems	Yes	Yes
Replication management	Yes	Yes
Launch other management applications	<ul style="list-style-type: none"> • Avamar Administrator • Avamar Client Manager • Avamar Installation Manager embedded in System Maintenance 	<ul style="list-style-type: none"> • Avamar Administrator • Avamar Enterprise Manager • Avamar Client Manager • Avamar Installation Manager • AvInstaller service
Display warnings, errors, and system alerts	Yes	Yes, in a quick-look graphical display and in detailed text. Filter the view by product, system, and category.
Management reports: select, view, and export	<ul style="list-style-type: none"> • Backup • System 	<ul style="list-style-type: none"> • Backup • System • Configuration

Backup and Recovery Manager is a separate tool that can be used to monitor Avamar NetWorker, and Data Domain systems.

Avamar Enterprise Manager provides centralized access to the Avamar Administrator for each Avamar system in an enterprise, as well as dashboard, reporting and search capabilities. With Enterprise Manager, backup administrators can monitor and manage all Avamar systems in a distributed environment. Client Manager is a tool within Enterprise Manager used to add and update backup clients to the Avamar system.

QUESTION 3

What is used to qualify a virtual environment for running an EMC AVE solution?

- A. iperf

- B. EBSS
- C. Performance Assurance Tool
- D. Procedure Generator

Correct Answer: C

Iperf

Use the iperf utility to test the network bandwidth

For the most comprehensive results, run the `iperf` utility in server mode on the Avamar server and in client mode on the Data Domain system. Then run the `iperf` utility in server mode on the Data Domain system and in client mode on the Avamar server. Run the `iperf` utility several times to verify the consistency of the results.

EBSS While there are several products that can be used to size an EMC deduplication system for Avamar or Data Domain, only the EMC Backup System Sizer (EBSS) is an official EMC product. It runs on Adobe Air and there for runs on Windows or Mac, and EMC recommends you always download the latest version. It will come in a zip file which includes supplements and a client questionnaire. Performance Assurance Tool

Pre-sales performance analysis

Pre-sales performance analysis for AVE is required. It is performed by EMC-trained personnel. Server hardware and the virtual environment must meet resource capability benchmarks according to results from the AVE Performance Assurance Tool (PAT). This tool also simulates the load imposed on the ESX/ESXi Server so that the customer can gauge the potential impact on the targeted ESX/ESXi Server. After the PAT is complete, the instructions contain information on how to analyze the data collected and determine if the ESX/ESXi Server is a good candidate for AVE.

QUESTION 4

Which type of database does EMC Avamar use to store information about backups?

- A. PostgreSQL
- B. Oracle
- C. MySQL
- D. SQL

Correct Answer: A

QUESTION 5

What is a potential impact of having an undersized hash cache on an EMC Avamar client?

- A. More queries to the Avamar server
- B. Decreased memory swapping
- C. More backup data sent to the Avamar server
- D. More chunks are compressed

Correct Answer: A

[E20-598 PDF Dumps](#)

[E20-598 VCE Dumps](#)

[E20-598 Practice Test](#)