



HP2-T25^{Q&As}

Servicing HP Rack-Tower Server Solutions

Pass HP HP2-T25 Exam with 100% Guarantee

Free Download Real Questions & Answers **PDF** and **VCE** file from:

<https://www.pass4lead.com/HP2-T25.html>

100% Passing Guarantee
100% Money Back Assurance

Following Questions and Answers are all new published by HP Official Exam Center

-  **Instant Download** After Purchase
-  **100% Money Back** Guarantee
-  **365 Days** Free Update
-  **800,000+** Satisfied Customers



**QUESTION 1**

What is required by iLO to support Agentless management? (Select two.)

- A. System Location
- B. SNMP Alert Destination
- C. Read Community
- D. Write Community
- E. Trap Community

Correct Answer: BC

Configuring HP Agentless Management manually

For HP SIM 7.0 to manage a ProLiant Gen8 server using HP Agentless Management, you need to configure certain SNMP parameters on the server. To configure SNMP, select Management from the iLO 4 GUI Administration browser menu.

Figure 5 shows the Management screen and the SNMP parameters that you need to configure.

To configure SNMP on the ProLiant Gen8 server, complete the following steps:

1.

Enable Agentless Management.

2.

(C) Enter a common Read Community string for HP SIM 7.0 and the ProLiant Gen8 server.

3.

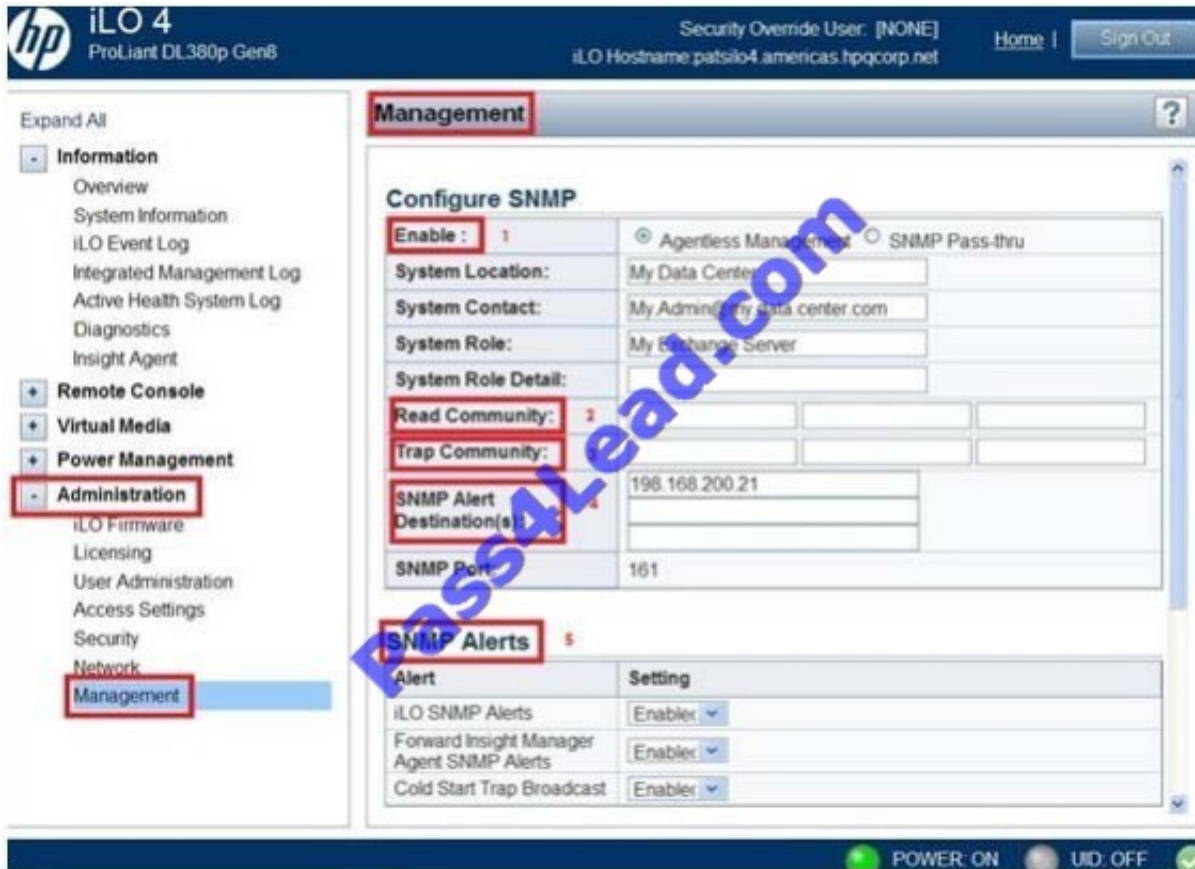
Optionally, enter a common Trap Community string for HP SIM 7.0 and the ProLiant Gen8 server.

4.

(B) Enter the IP address or DNS name for the HP SIM 7.0 IP address in the SNMP Alert Destinations(s) field.

5.

Enable all of the SNMP Alerts: iLO SNMP Alerts, Forward Insight Manager SNMP Alerts (if the SNMP agent is installed in the OS), and Cold Start Trap Broadcast.



QUESTION 2

What is the first step when creating a NIC team using NCU?

- A. Select team members.
- B. Configure the team IP address.
- C. Set IP of each NIC to be used in the team.
- D. Choose team type.

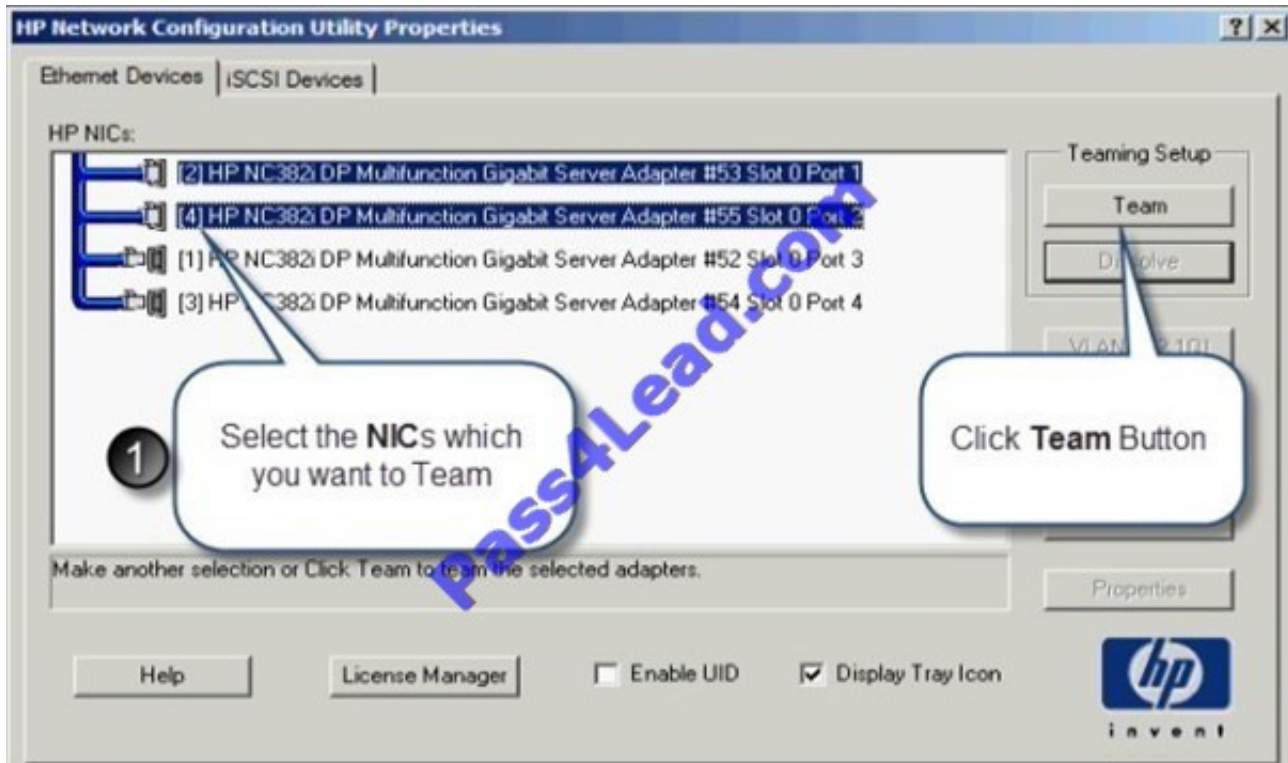
Correct Answer: A

1.

The HP Network Configuration Utility Properties window will look like the one provided below.

2.

Select 2 NICs by clicking on it and then click Team button.



Note:

*

NIC Teaming (Network Teaming) means you are grouping two or more physical NICs and it will act as a single NIC. You may call it as a Virtual NIC. Minimum number of NICs which can be grouped (Teamed) is Two and the maximum number of NICs which you can group is Eight.

*

To create NIC Teaming in Windows 2008/2003 Operating System, we need to use the HP Network Configuration Utility (NCU).

QUESTION 3

Which statements are correct about SIM 7.0 Agentless Management? (Select two.)

- A. HP SIM communicates with the CPU and collects essential data for the OS.
- B. Agentless Management Service runs on the host to provide software information directly to the iLO Management Engine.
- C. HP SIM communicates with the iLO Management Engine to collect hardware data.
- D. Agentless Management is provided by the CPU.

Correct Answer: BC

Overview of HP Agentless Management ProLiant Gen8 servers include the iLO Management Engine, which provides HP Agentless Management. HP Agentless Management runs independently from the OS and collects data on core



server components. You can view the data that the iLO Management Engine collects through either the web-based iLO 4 Graphical User Interface (GUI), the iLO XML scripting interface or through a remote management application, like HP SIM 7.0.

To provide the complete HP Agentless Management solution, you can add the optional HP Agentless Management Service. The HP Agentless Management Service runs on the OS and gathers information that the iLO Management Engine does not obtain when an OS is running. The HP Agentless Management Service is a lightweight service that only communicates with the iLO Management Engine. It does not require an SNMP stack to be running on the host OS and it does not have an external interface. The HP Agentless Management Service provides the information it gathers to the iLO Management Engine. You can view the data that the HP Agentless Management Service and the iLO Management Engine collect through the iLO 4 GUI or HP SIM 7.0,

QUESTION 4

What is achieved on ProLiant Gen8 Servers by including temperature sensors on stand-up components within the server (3D Sea of Sensors)?

- A. Cooling fans on stand-up components only run at 50% utilization.
- B. It provides more precise and more efficient cooling.
- C. It requires half the number of fans than in previous server models.
- D. Dedicated cooling fans are included on all stand-up components.

Correct Answer: B

HP Sea of Sensors 3D Introduced with ProLiant G6 servers, HP Sea of Sensors provides the data to precisely control the server fans and directly cool specific components, while not overcooling other components. This can reduce fan power consumption up to dozens of watts per server. HP Sea of Sensors 3D in ProLiant Gen8 servers extends the use of sensors to select PCI Express option cards, FlexibleNetwork Adapters, and FlexFabric Adapters to get a three-dimensional temperature profile in the server. This additional data enables more precise and efficient cooling of ProLiant Gen8 servers. The data is included in the always-on diagnostic information of the HP Active Health System.

QUESTION 5

Which statements are correct about the ProLiant warranty service level agreement? (Select two.)

- A. A travel and labor charge applies when customers decline to replace an optional CSR part.
- B. A travel and labor charge does not apply when customers decline to replace an optional CSR part.
- C. A travel and labor charge applies when customers decline to replace a mandatory CSR part.
- D. A travel and labor charge does not apply when customers decline to replace a mandatory CSR part.

Correct Answer: BC

Server Warranty includes 3-Year Parts, 3-Year Labor, 3-Year Onsite support with next business day response. Warranty repairs may be accomplished through the use of Customer Self Repair (CSR) parts.

These parts fall into two categories:



- 1) Mandatory CSR parts are designed for easy replacement. A travel and labor charge will result when customers decline to replace a Mandatory CSR part (C);
- 2) Optional CSR parts are also designed for easy replacement but may involve added complexity. Customers may choose to have HP replace Optional CSR parts at no charge (B)

[Latest HP2-T25 Dumps](#)

[HP2-T25 PDF Dumps](#)

[HP2-T25 Practice Test](#)



To Read the [Whole Q&As](#), please purchase the [Complete Version](#) from [Our website](#).

Try our product !

100% Guaranteed Success

100% Money Back Guarantee

365 Days Free Update

Instant Download After Purchase

24x7 Customer Support

Average 99.9% Success Rate

More than 800,000 Satisfied Customers Worldwide

Multi-Platform capabilities - [Windows](#), [Mac](#), [Android](#), [iPhone](#), [iPod](#), [iPad](#), [Kindle](#)

We provide exam PDF and VCE of Cisco, Microsoft, IBM, CompTIA, Oracle and other IT Certifications. You can view Vendor list of All Certification Exams offered:

<https://www.pass4lead.com/allproducts>

Need Help

Please provide as much detail as possible so we can best assist you.

To update a previously submitted ticket:



| | | |
|---|---|--|
|  <p>One Year Free Update Free update is available within One Year after your purchase. After One Year, you will get 50% discounts for updating. And we are proud to boast a 24/7 efficient Customer Support system via Email.</p> |  <p>Money Back Guarantee To ensure that you are spending on quality products, we provide 100% money back guarantee for 30 days from the date of purchase.</p> |  <p>Security & Privacy We respect customer privacy. We use McAfee's security service to provide you with utmost security for your personal information & peace of mind.</p> |
|---|---|--|

Any charges made through this site will appear as Global Simulators Limited.

All trademarks are the property of their respective owners.

Copyright © pass4lead, All Rights Reserved.