

# JN0-660<sup>Q&As</sup>

Service Provider Routing and Switching, Professional

## Pass Juniper JN0-660 Exam with 100% Guarantee

Free Download Real Questions & Answers **PDF** and **VCE** file from:

<https://www.pass2lead.com/jn0-660.html>

100% Passing Guarantee  
100% Money Back Assurance

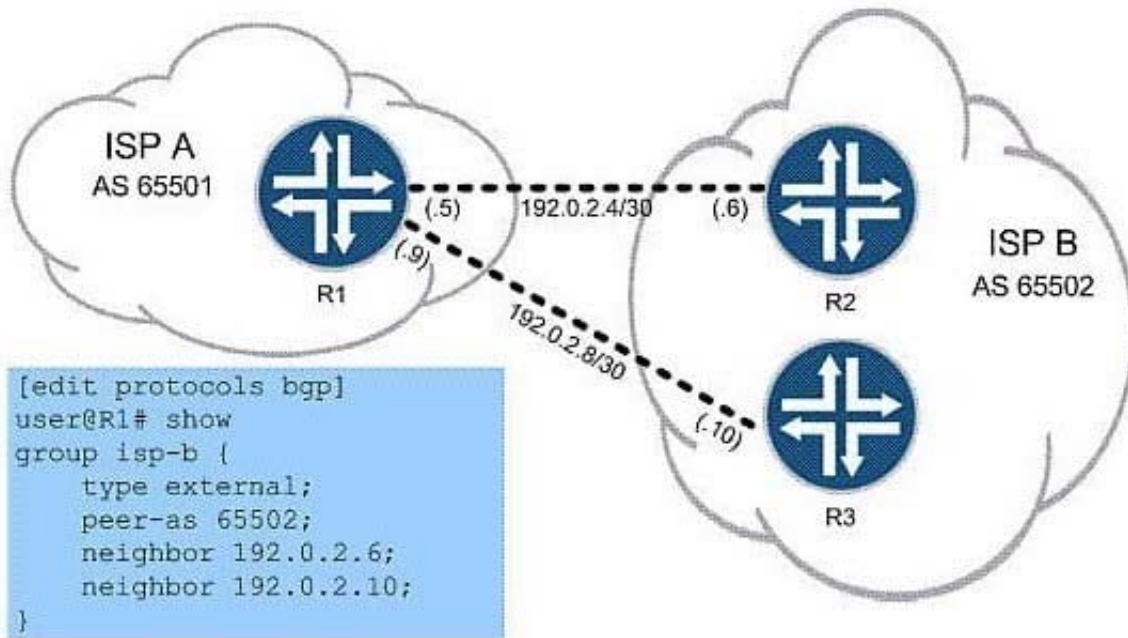
Following Questions and Answers are all new published by Juniper  
Official Exam Center

-  **Instant Download** After Purchase
-  **100% Money Back** Guarantee
-  **365 Days** Free Update
-  **800,000+** Satisfied Customers



**QUESTION 1**

Click the Exhibit button.



Referring to the exhibit, you work for ISP A and are asked to configure R1 to forward traffic for all routes across both available links, to both routers in ISP B's network. Which three configuration commands do you use? (Choose three.)

- A. set protocols bgp group isp-b multipath
- B. set policy-options policy-statement load-balance then load-balance per-packet
- C. set routing-options forwarding-table import load-balance
- D. set protocols bgp group isp-b multipath
- E. set routing-options forwarding-table export load-balance

Correct Answer: BDE

**QUESTION 2**

You are asked to design a Layer 2 VPN service for a service provider network that supports Ethernet and ATM transport. Which two Layer 2 VPN technologies will meet this requirement? (Choose two.)

- A. LDP-signaled VPLS, using draft martini encapsulation
- B. BGP-signaled VPLS, using the RFC 4448 Layer 2 frame format
- C. LDP Layer 2 circuit, using the RFC 4448 Layer 2 frame format

D. BGP Layer 2 VPN, using draft-Martini encapsulation

Correct Answer: CD

**QUESTION 3**

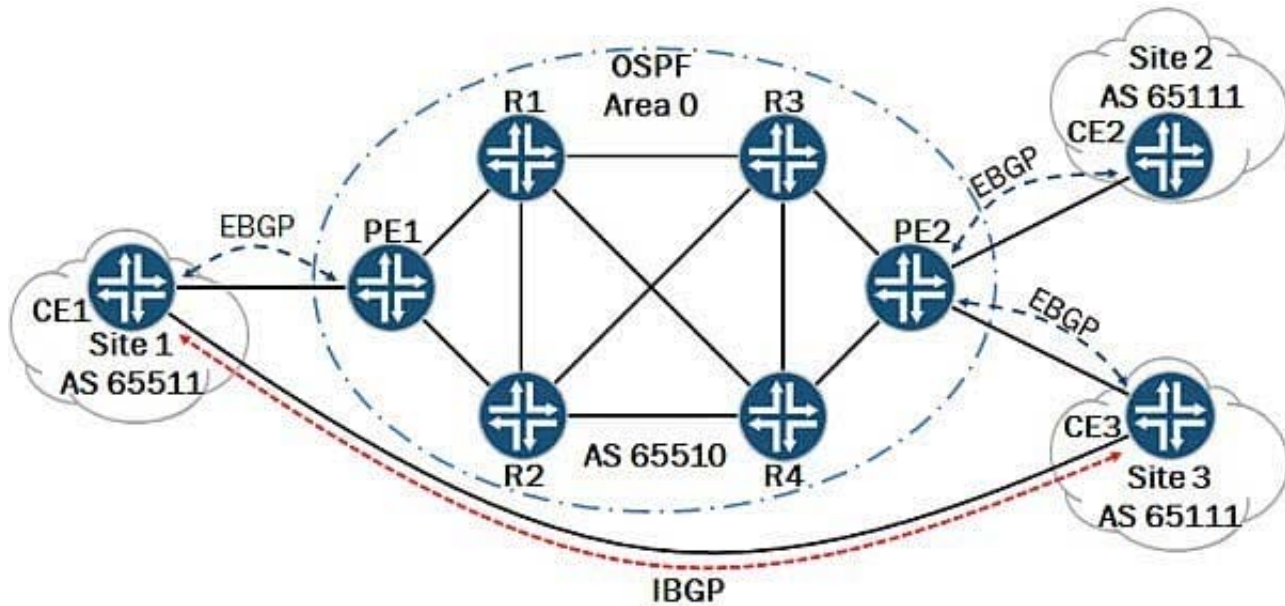
You have assigned target:65432:100 as the route target for Customer A's BGP Layer 2 VPN. The PE1 router VRF is configured with vrf-target export target:65432:100. Which configuration on PE2 correctly assigned Customer A's routes to their VRF?

- A. vrf-target target:65432:100
- B. route-target target:65432:100
- C. vrf-target export target:65432:100
- D. route-target export target:65432:100

Correct Answer: A

**QUESTION 4**

-- Exhibit



-- Exhibit -Click the Exhibit button.

Referring to the exhibit, You have a Layer 3 VPN connecting Site 1, Site 2, and Site 3. Site 1 and Site 3 have a backdoor IBGP connection. You must meet these requirements:

1.

Ensure that PE2 does not advertise the routes learned from PE1 to CE3.

2.

Ensure that PE1 does not advertise the routes learned from PE2 that originated from CE3.

3.

All routes must be present in Site 2.

Which two statements meet these requirements? (Choose two.)

A. Use a unique origin community on each PE and tag the appropriate BGP routes when importing them from the local CE devices.

B. Use a unique origin community on each PE and tag the appropriate BGP routes when exporting them to the connected CE devices.

C. Use an export policy that matches routes with the remote origin community and blocks these routes from being advertised to the connected CE devices.

D. Use a VRF import policy that matches the routes with the remote origin community and blocks these routes from being accepted.

Correct Answer: AC

---

#### QUESTION 5

In an interdomain multicast deployment scenario, RP1 is in AS1 and RP2 is in AS2. MSDP is configured between RP1 and RP2. A source in AS1 and a receiver in AS2 have just become active. What initially triggers RP1 to send source-active messages (SAs) to RP2?

A. A join-to-RP message is sent from RP2 to RP1.

B. A join-to-source message is sent from RP2 to RP1.

C. A register message is received on RP1.

D. A register message is received on RP2.

Correct Answer: C

[Latest JN0-660 Dumps](#)

[JN0-660 VCE Dumps](#)

[JN0-660 Exam Questions](#)