

# JN0-660<sup>Q&As</sup>

Service Provider Routing and Switching, Professional

## Pass Juniper JN0-660 Exam with 100% Guarantee

Free Download Real Questions & Answers **PDF** and **VCE** file from:

<https://www.pass2lead.com/jn0-660.html>

100% Passing Guarantee  
100% Money Back Assurance

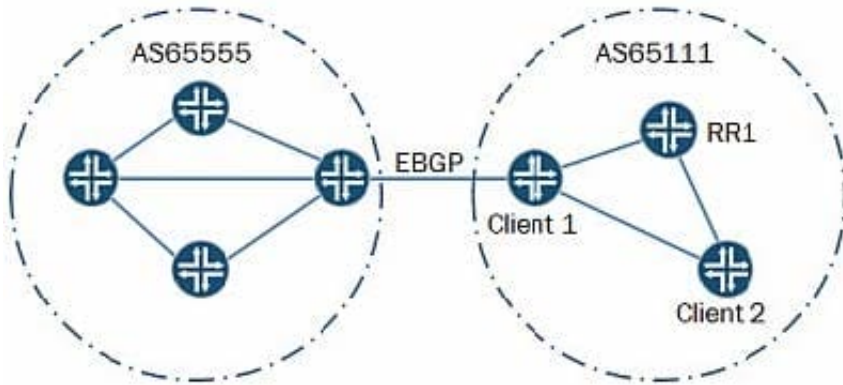
Following Questions and Answers are all new published by Juniper  
Official Exam Center

- ⚙️ **Instant Download** After Purchase
- ⚙️ **100% Money Back** Guarantee
- ⚙️ **365 Days** Free Update
- ⚙️ **800,000+** Satisfied Customers



**QUESTION 1**

-- Exhibit -- Exhibit -Click the Exhibit button. The Client 1 router forwards a route learned from its EBGP peer to the route reflector RR1. The route



reflector forwards the route to the Client 2 router. However, the Client 2 router uses suboptimal routing to reach the EBGP route destination.

What would cause this behavior?

- A. The route reflector becomes the default forwarding path for packets sent from Client 2 towards the EBGP route destination.
- B. The route reflector is using the no-client-reflect parameter.
- C. The route reflector has a next-hop self policy for EBGP-learned routes.
- D. The route reflector is applying the originator ID attribute to the route.

Correct Answer: C

**QUESTION 2**

You are deploying OSPFv2 and OSPFv3 in your network. You must enable authentication to secure OSPF communication.

Which authentication method is supported?

- A. MD5
- B. Simple
- C. IPsec
- D. RSA

Correct Answer: C

**QUESTION 3**

Your router is receiving four BGP route advertisements for the 192.168.100.0/24 network. By default, which route becomes active?

- A. Route A, which is learned through EBGP with an AS path of 8001 and a MED of 175.
- B. Route B, which is learned through IBGP with an AS path of 9900, a MED of 150, and an IGP cost of 15.
- C. Route C, which is learned through IBGP with an AS path of 8001, a MED of 100, and an IGP cost of 10
- D. Route D, which is learned through EBGP with an AS path of 9900 and a MED of 200.

Correct Answer: C

---

**QUESTION 4**

Which two statements describe the benefits of using point-to-multipoint LSPs in an environment with MVPNs? (Choose two.)

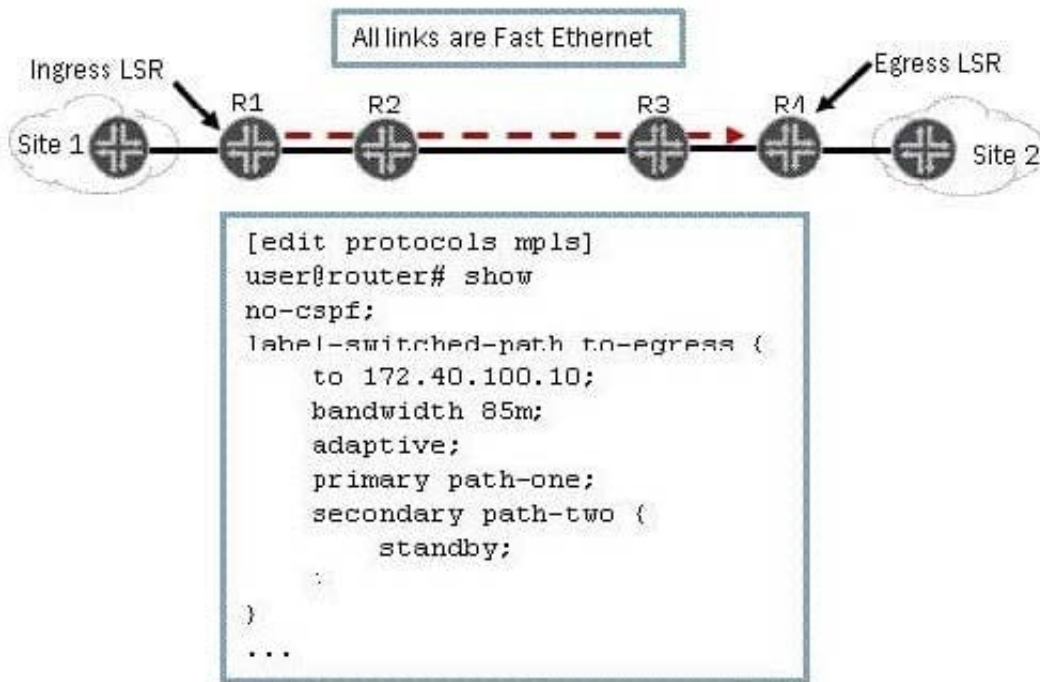
- A. Performance levels within the LSPs can be guaranteed, regardless of the signaling protocol used.
- B. A service provider network does not need to run PIM to support multicast routing.
- C. Data replication can be done by downstream LSRs and not just by the ingress PE router.
- D. Multicast traffic can be protected, regardless of the signaling protocol used.

Correct Answer: BC

---

**QUESTION 5**

Click the Exhibit button.



As shown in the exhibit, you have an adaptive LSP that requires 85 Mbps. The LSP is configured with a primary path and a secondary path in standby mode. All connections in the MPLS network are Fast Ethernet. Which statement is correct?

- A. The primary and secondary paths are in an up state and operational.
- B. The primary and secondary paths are in a down state and not operational.
- C. The secondary path is in a down state and not operational.
- D. The primary path is in a down state and not operational.

Correct Answer: A

[Latest JN0-660 Dumps](#)

[JN0-660 Study Guide](#)

[JN0-660 Braindumps](#)