

# JN0-692<sup>Q&As</sup>

Service Provider Routing and Switching Support, Professional

## Pass Juniper JN0-692 Exam with 100% Guarantee

Free Download Real Questions & Answers **PDF** and **VCE** file from:

<https://www.pass2lead.com/jn0-692.html>

100% Passing Guarantee  
100% Money Back Assurance

Following Questions and Answers are all new published by Juniper  
Official Exam Center

- ⚙️ **Instant Download** After Purchase
- ⚙️ **100% Money Back** Guarantee
- ⚙️ **365 Days** Free Update
- ⚙️ **800,000+** Satisfied Customers



### QUESTION 1

IS-IS is configured to support both IPv4 and IPv6 routing. Which statement is true?

- A. Separate IPv4 and IPv6 hellos will be sent.
- B. IPv6 will have a separate link-state database.
- C. IS-IS v6 support must be enabled under protocols isis.
- D. IS-IS sends IPv6 topology information as new TLVs in existing LSPs.

Correct Answer: D

---

### QUESTION 2

Click the Exhibit button.

```
[edit firewall three-color-policer policerA]
user@router# show
two-rate {
    color-aware;
    committed-information-rate 1m;
    committed-burst-size 500k;
    peak-information-rate 5m;
    peak-burst-size 1m;
}
```

Traffic is flowing through the policer as shown in the exhibit. The traffic has a throughput rate of 3 Mbps, and the burst size counter is at 1.5 MB. How is traffic affected?

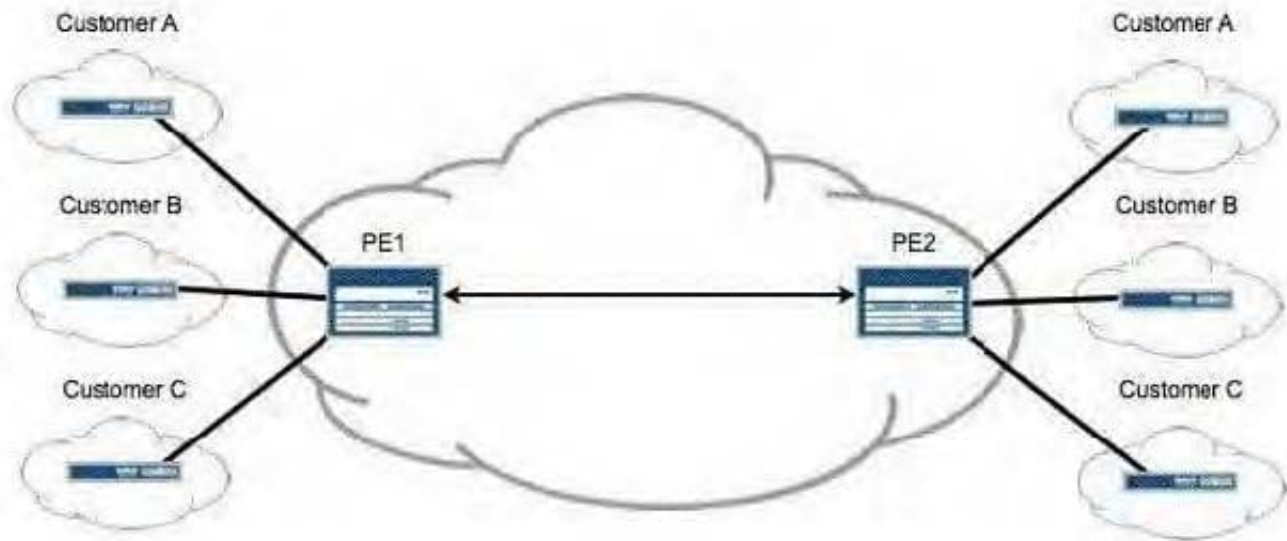
- A. Traffic has its PLP set to low.
- B. Traffic has its PLP set to medium-low.
- C. Traffic has its PLP set to medium-high.
- D. Traffic has its PLP set to high.

Correct Answer: C

---

### QUESTION 3

Click the Exhibit button.



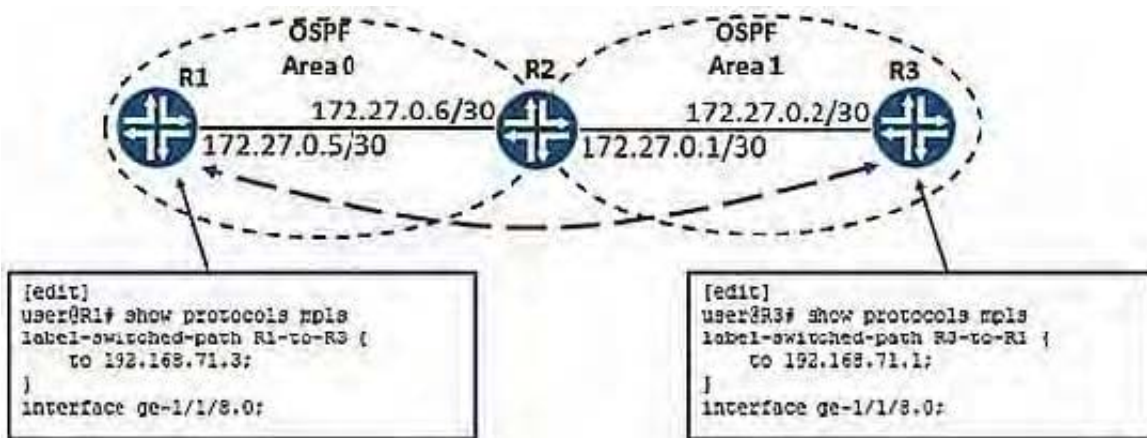
After adding Customer C to your Layer 3 VPN, you must validate that PE2 is receiving VPN routes for all customers attached to PE1, as shown in the exhibit. Which operational command displays this information?

- A. show route instance
- B. show route summary
- C. show route table bgp.l3vpn.0
- D. show route table customer-c.inet.0

Correct Answer: C

**QUESTION 4**

You have configured bidirectional LSPs between R1 and R3. You notice that the LSPs are not coming up.



Referring to the exhibit, which statement is correct?

- A. You must disable CSPF for the LSPs.

- B. You must enable CSPF for the LSPs.
- C. You must ensure type 5 LSAs are allowed in area 1.
- D. You must ensure OSPF traffic engineering is configured.

Correct Answer: A

**QUESTION 5**

Click the Exhibit button.

```
[edit]
root@R4# run show isis database
IS-IS level 1 link-state database:
LSP ID                Sequence Checksum Lifetime Attributes
R4.00-00              0x4    0xe888    1154  L1 L2
R3.00-00              0x3    0x2ce1    1150  L1 L2
R3.02-00              0x2    0x46c7    1150  L1 L2
  3 LSPs

IS-IS level 2 link-state database:
LSP ID                Sequence Checksum Lifetime Attributes
R4.00-00              0x5    0xee7d    1154  L1 L2
R3.00-00              0x4    0xed1f    1150  L1 L2
R3.02-00              0x3    0x44c8    1151  L1 L2
  3 LSPs

[edit]
root@R4#
```

Based on the output in the exhibit, which statement is correct?

- A. R4 has been configured with an IS-IS export policy and is announcing external routing information.
- B. R3 and R4 have an adjacency at both level 1 and level 2.
- C. R3 has been configured so that it is not used for transit traffic.
- D. R3 and R4 have only a level 2 adjacency.

Correct Answer: B