

OMG-OCUP-200^{Q&As}

OMG-Certified UML Professional Intermediate Exam

**Pass OMG OMG-OCUP-200 Exam with 100%
Guarantee**

Free Download Real Questions & Answers **PDF** and **VCE** file from:

<https://www.pass2lead.com/omg-ocup-200.html>

100% Passing Guarantee
100% Money Back Assurance

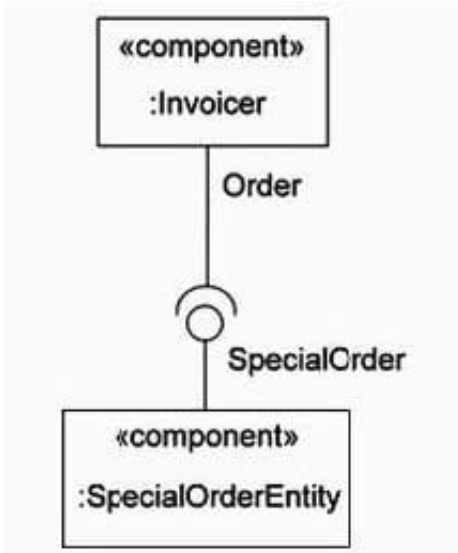
Following Questions and Answers are all new published by OMG
Official Exam Center

- ⚙️ **Instant Download** After Purchase
- ⚙️ **100% Money Back** Guarantee
- ⚙️ **365 Days** Free Update
- ⚙️ **800,000+** Satisfied Customers



QUESTION 1

Which relationships would make the model in the exhibit ill-formed?



- A. SpecialOrder is a subtype of Order.
- B. Order is a subtype of SpecialOrder.
- C. SpecialOrder and Order are related to each other via a dependency.
- D. SpecialOrder and Order are related to each other via an association.

Correct Answer: B

QUESTION 2

What can return a result on an output pin?

- A. SendObjectAction
- B. CallBehaviorAction
- C. DestroyObjectAction
- D. AddVariableValueAction
- E. BroadcastSignalOperation

Correct Answer: B

QUESTION 3

What determines whether a clause executes?

- A. guards
- B. classes
- C. behaviors
- D. test nodes
- E. parameters

Correct Answer: D

QUESTION 4

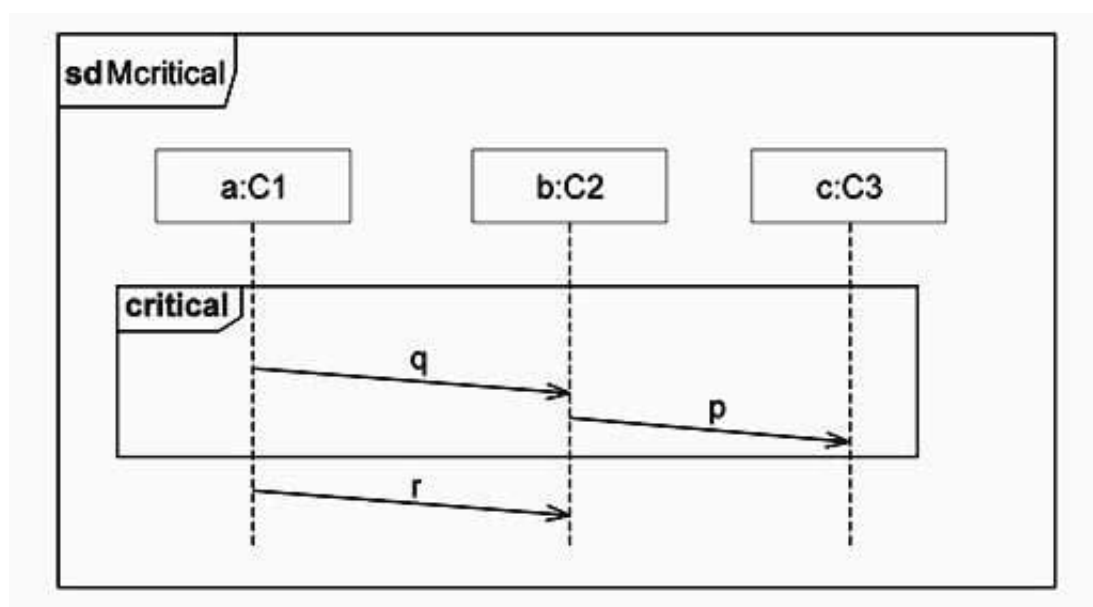
For what does an interaction operator define semantics?

- A. a particular message
- B. a particular interaction
- C. a particular combined fragment
- D. a particular interaction fragment

Correct Answer: C

QUESTION 5

In the exhibit, what is true for Mcritical?



- A. r can be sent whenever p has been sent.

- B. The reception of p must precede sending of r.
- C. Whenever q and p have been sent, r can be sent.
- D. There are legal traces according to Mcritical where r is absent.

Correct Answer: B

[OMG-OCUP-200 PDF Dumps](#)

[OMG-OCUP-200 VCE Dumps](#)

[OMG-OCUP-200 Practice Test](#)