

# OMG-OCUP-200<sup>Q&As</sup>

OMG-Certified UML Professional Intermediate Exam

**Pass OMG OMG-OCUP-200 Exam with 100%  
Guarantee**

Free Download Real Questions & Answers **PDF** and **VCE** file from:

<https://www.pass2lead.com/omg-ocup-200.html>

100% Passing Guarantee  
100% Money Back Assurance

Following Questions and Answers are all new published by OMG  
Official Exam Center

-  **Instant Download** After Purchase
-  **100% Money Back** Guarantee
-  **365 Days** Free Update
-  **800,000+** Satisfied Customers



**QUESTION 1**

What interface restrictions does a port have?

- A. multiple required interfaces or multiple provided interfaces
- B. multiple provided interfaces and multiple required interfaces
- C. equal numbers of provided interfaces and required interfaces
- D. exactly one provided interface or exactly one required interface
- E. exactly one required interface and exactly one provided interface

Correct Answer: B

---

**QUESTION 2**

What situation results from an ApplyFunctionAction?

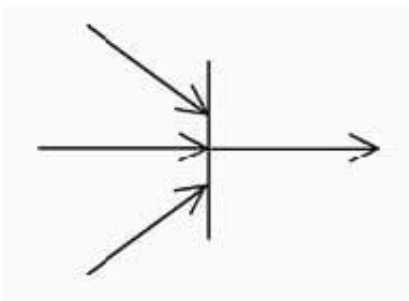
- A. produces output values
- B. performs any set of UML actions
- C. reads objects and produces output values
- D. writes objects and produces output values
- E. reads objects, write objects, and produces output values

Correct Answer: A

---

**QUESTION 3**

In the exhibit, how many of the arrows must provide values for the outgoing arrow to be given a value?



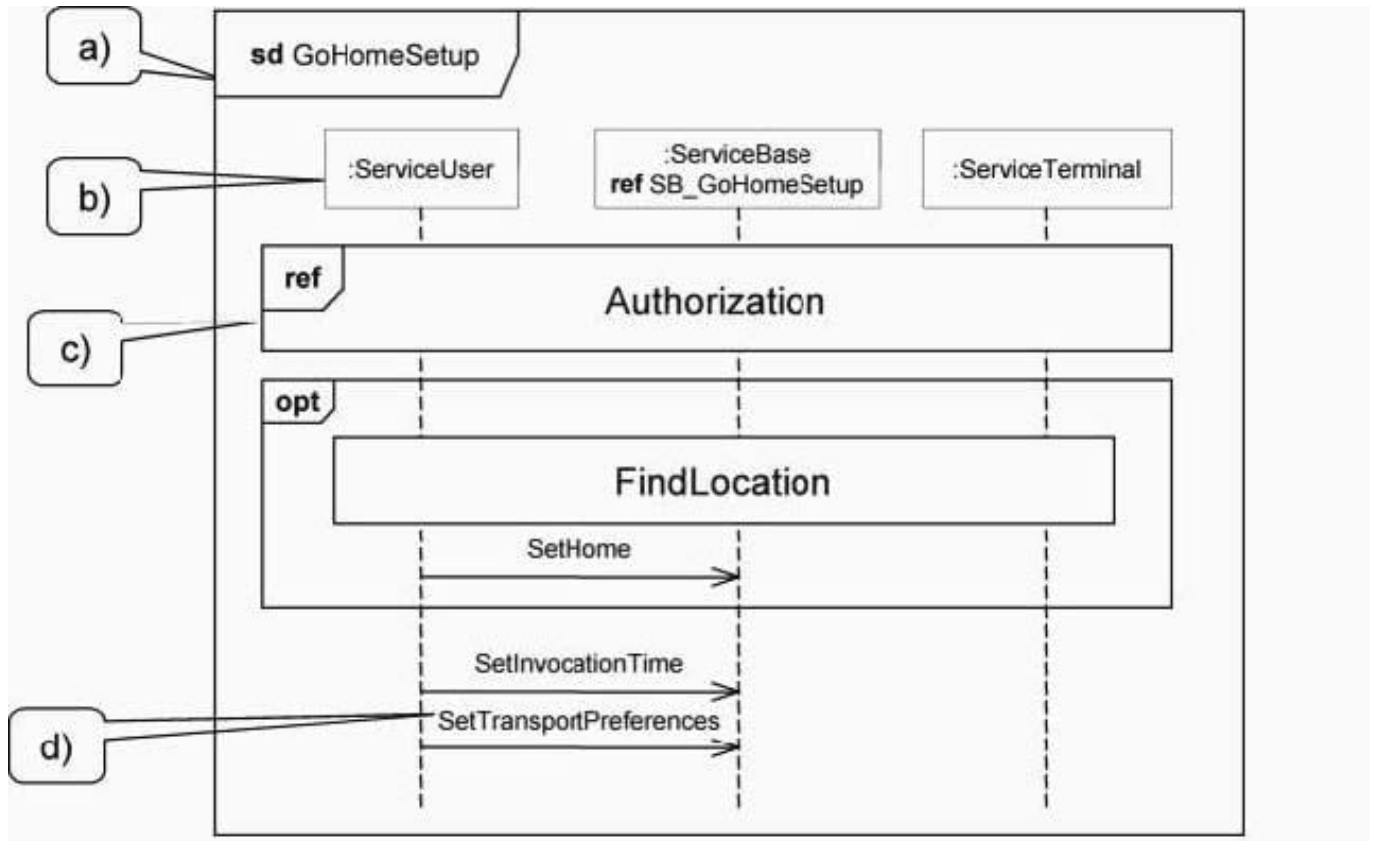
- A. none
- B. one

- C. two
- D. three

Correct Answer: D

**QUESTION 4**

In the exhibit, what represents an interaction occurrence?



- A. a
- B. b
- C. c
- D. d

Correct Answer: C

**QUESTION 5**

What is the meaning of a required extension?

- A. The extension must be applied at least once in a model.

- B. This extension has a higher priority than the other defined in the same profile.
- C. An instance of the extending stereotype must never be linked to an instance of the extended metaclass.
- D. An instance of the extending stereotype must always be linked to an instance of the extended metaclass.

Correct Answer: D

[OMG-OCUP-200 VCE  
Dumps](#)

[OMG-OCUP-200 Exam  
Questions](#)

[OMG-OCUP-200  
Braindumps](#)