

QV_DEVELOPER_01^{Q&As}

QlikView 11 Developer Certification Examination

**Pass QlikView QV_DEVELOPER_01 Exam with 100%
Guarantee**

Free Download Real Questions & Answers **PDF** and **VCE** file from:

https://www.pass2lead.com/qv_developer_01.html

100% Passing Guarantee
100% Money Back Assurance

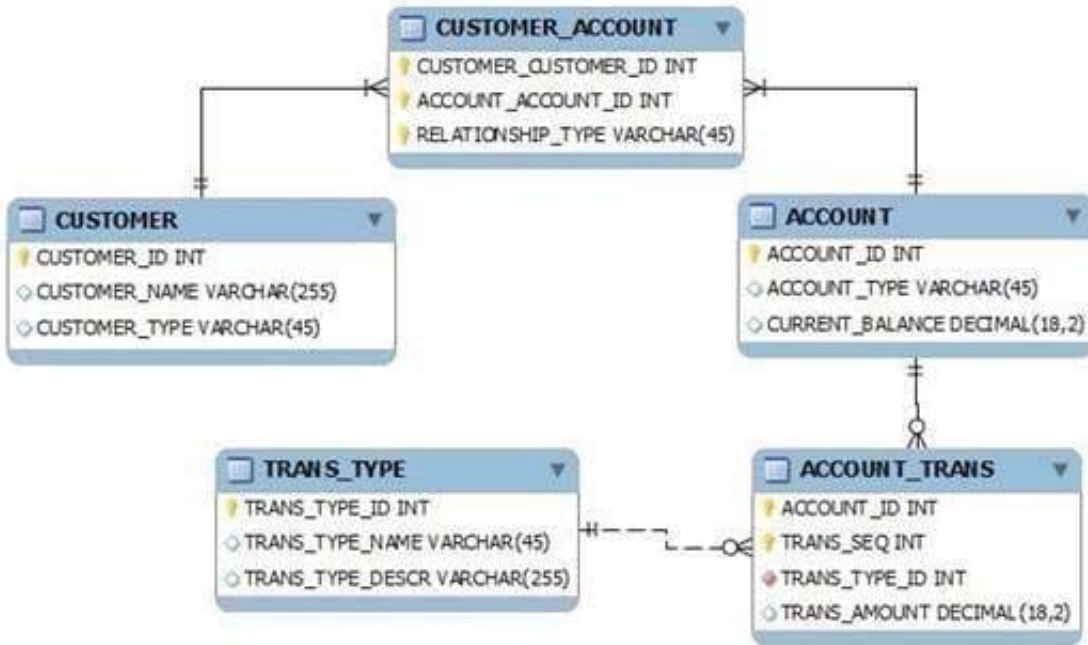
Following Questions and Answers are all new published by QlikView
Official Exam Center

-  **Instant Download** After Purchase
-  **100% Money Back** Guarantee
-  **365 Days** Free Update
-  **800,000+** Satisfied Customers



QUESTION 1

Refer to the exhibit to the right.



What is the primary key of ACCOUNT_TRANS?

- A. ACCOUNT_ID
- B. TRANS_SEQ
- C. ACCOUNT_ID and TRANS_SEQ
- D. ACCOUNT_ID, TRANS_SEQ, and TRANS_TYPE

Correct Answer: C

QUESTION 2

A developer has a Container Object with multiple charts and each chart has many different expressions.

The developer needs to provide users with a method to easily obtain information related to each chart and

the expressions within.

How can the developer fulfill this requirement?

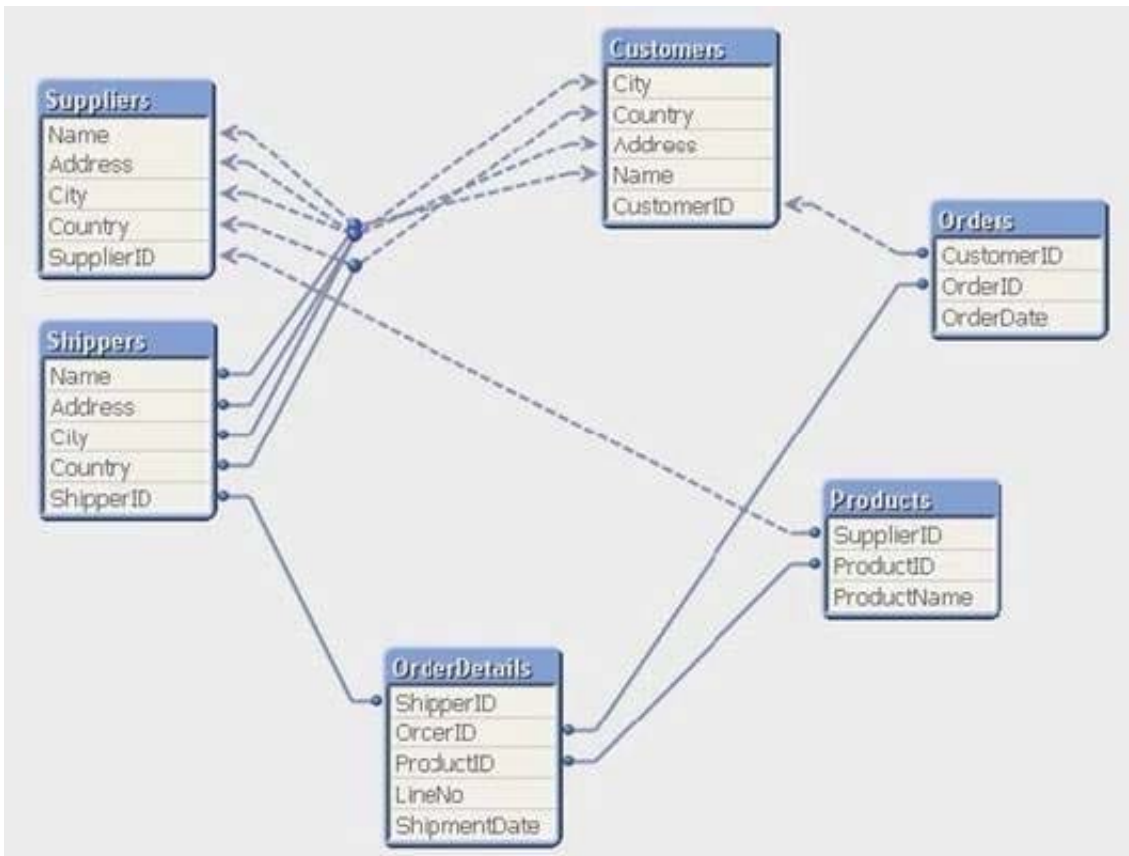
- A. design a help graphic for each chart and set it as the caption background
- B. create a Text Object containing help information for each chart and link each Chart Object to its corresponding Text Object using QlikView's Linked Objects feature

- C. enter a thorough description of each chart and its expressions in the Text in Chart property on the Layout tab
- D. enter a thorough description of each chart and its expressions in the Help Text property on the Caption tab

Correct Answer: D

QUESTION 3

A customer has an Actual sales fact table aggregated at the transactional level and a Budgeted sales fact table aggregated at the monthly level. The tables share many of the same dimensional fields.



How can a developer form the data model?

- A. qualify both tables and Unqualify all shared fields
- B. left join the Budgeted sales table onto the fact table using Month as the key
- C. concatenate Load the Budgeted sales table into the Actual sales table loading shared fields as NULL
- D. create a link table containing the dimensional fields then link each fact table using a concatenated key

Correct Answer: D

QUESTION 4

Which QlikView script should a developer add to a Load script to output the resulting number of rows from a joining Load statement to the script Execution Progress window and the script log file?

- A. LET vNumRows = NoOfRows(\\'TableName\\'); ECHO \\'Resulting Rows = \$(vNumRows)\\';
- B. SET vNumRows = NoOfRows(\\'TableName\\'); ECHO \\'Resulting Rows = \$(vNumRows)\\';
- C. LET vNumRows = NoOfRows(\\'TableName\\'); PRINT \\'Resulting Rows = \$(vNumRows)\\';
- D. SET vNumRows = NoOfRows(\\'TableName\\'); Response.Write \\'Resulting Rows = \$(vNumRows)\\';
- E. LET vNumRows = NoOfRows(\\'TableName\\'); TRACE \\'Resulting Rows = \$(vNumRows)\\';

Correct Answer: E

QUESTION 5

A global sales organization needs sales figures in both the local currencies and the corporate standard of \$USD.

How can a developer achieve this goal and enable users to only consume a single Document CAL?

- A. create a separate QVW containing values in the data model for both the local and \$USD currency amounts
- B. create a single QVW and add a table containing currency multipliers while using \$USD as a baseline currency
- C. create a separate QVW for each currency (\$USD is considered its own currency) and document chain them all together
- D. create a single QVW with duplicate tables for each currency in data islands and associate each data island to each user or group

Correct Answer: B

[Latest QV_DEVELOPER_01 Dumps](#)

[QV_DEVELOPER_01 Exam Questions](#)

[QV_DEVELOPER_01 Braindumps](#)