

# VCP-550<sup>Q&As</sup>

VMware Certified Professional - Data Center Virtualization

## Pass VMware VCP-550 Exam with 100% Guarantee

Free Download Real Questions & Answers **PDF** and **VCE** file from:

<https://www.pass2lead.com/vcp-550.html>

100% Passing Guarantee  
100% Money Back Assurance

Following Questions and Answers are all new published by VMware  
Official Exam Center

- ⚙️ **Instant Download** After Purchase
- ⚙️ **100% Money Back** Guarantee
- ⚙️ **365 Days** Free Update
- ⚙️ **800,000+** Satisfied Customers



### QUESTION 1

An administrator is planning a new vSphere deployment using shared storage. The solution must support:

vMotion

Storage vMotion

Fault Tolerant virtual machines

VAAI primitives

RDM disks

Which storage type will meet these requirements?

A.

CIFS

B.

iSCSI

C.

NFS

D.

vSAN

Correct Answer: B

---

### QUESTION 2

Which configuration will block communication between two virtual machines on the same DMZ network?

A. An isolated Private VLAN configured on a distributed switch and the two DMZ server virtual machines connected to the same port group

B. Two different port groups created on a distributed switch and 1 DMZ server virtual machine connected to each port group

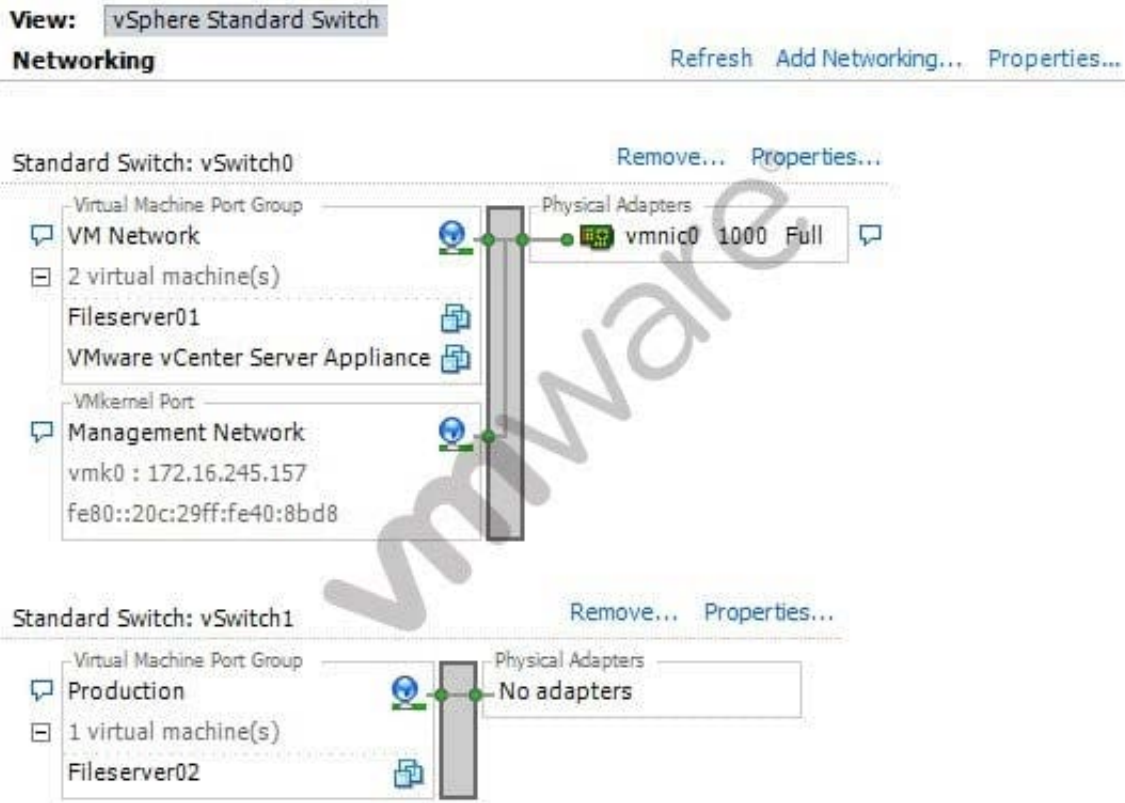
C. Two different port groups created on a standard switch and 1 DMZ server virtual machine connected to each port group

D. The security policy exception set to Reject for the switch to which the two DMZ server virtual machines will be connected

Correct Answer: A

**QUESTION 3**

-- Exhibit -



-- Exhibit -The vSphere administrator needs to remove the Production virtual machine port group from an ESXi host. The ESXi host's Networking Configuration tab is shown in the exhibit.

After disconnecting the Fileserver02 VM, what step does the administrator need to take, assuming that vSwitch1 will still be needed for further configuration?

- A. Remove the Production port group by accessing the properties for the port group.
- B. Remove the Production port group by accessing the properties for vSwitch1.
- C. Remove the Production port group by accessing the properties for the Network.
- D. Remove the Production port group by removing vSwitch1.

Correct Answer: B

**QUESTION 4**

A vSphere administrator needs to configure the environment to send a notification to a monitored email address every time a vSphere alarm is triggered. Which procedure should the administrator use to accomplish the task?

- A. Use the vSphere web client to configure the vCenter Server SMTP settings. Edit the alarm action to send a notification email.
- B. Use the vSphere web client to configure the vCenter Server SNMP settings. Edit the alarm action to send a notification email.
- C. Use the vSphere web client to create a vCenter Server scheduled task that will send a notification email when an alarm is triggered.
- D. Use the vSphere web client to create a vCenter Orchestrator workflow that will send a notification email when an alarm is triggered.

Correct Answer: A

---

#### QUESTION 5

A new LUN has been created on an iSCSI array and assigned to an ESXi 5.x server .

However, when the administrator logs in to the vSphere Web Client the LUN is not visible.

Other LUNs on the iSCSI array are visible.

What should the administrator do to resolve this issue?

- A. Rescan for the new storage device
- B. Ensure the LUN is zoned correctly
- C. Add the new LUN to the Static Discovery list
- D. Ensure the CHAP settings are correctly configured

Correct Answer: A