

VCP-550^{Q&As}

VMware Certified Professional - Data Center Virtualization

Pass VMware VCP-550 Exam with 100% Guarantee

Free Download Real Questions & Answers **PDF** and **VCE** file from:

<https://www.pass2lead.com/vcp-550.html>

100% Passing Guarantee
100% Money Back Assurance

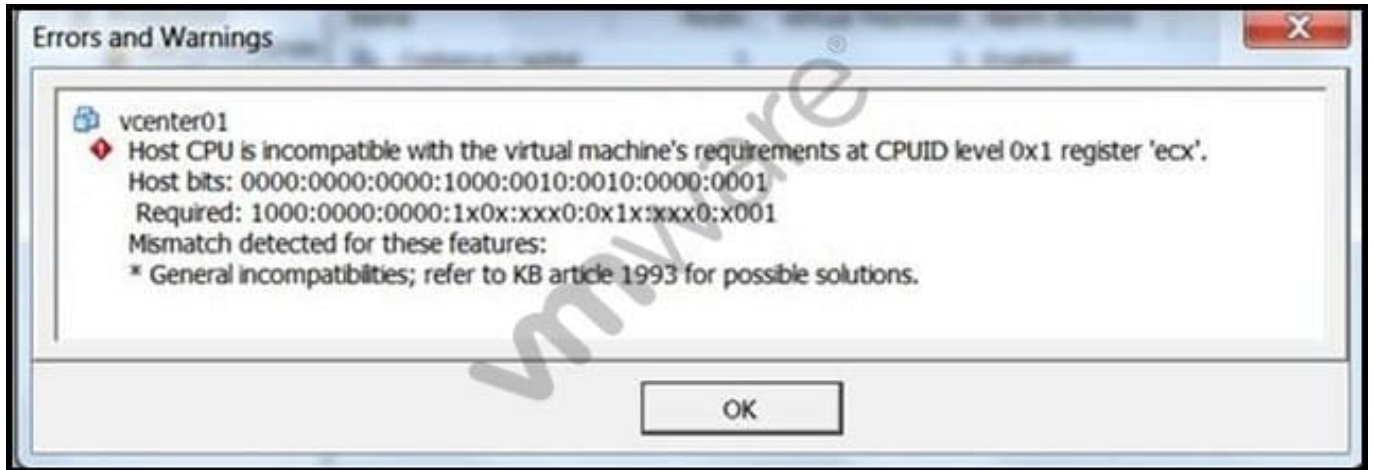
Following Questions and Answers are all new published by VMware
Official Exam Center

-  **Instant Download** After Purchase
-  **100% Money Back** Guarantee
-  **365 Days** Free Update
-  **800,000+** Satisfied Customers



QUESTION 1

A vSphere administrator has a 4 host DRS cluster with plans to grow to 8 hosts. During a vMotion migration, the following error is displayed: -- Exhibit -



-- Exhibit -What action could be taken to resolve the issue?

- A. Ensure all hosts in the cluster contain only Intel or AMD CPUs
- B. Choose Reset all to Default in the CPU Identification Mask of the VM
- C. Verify and correct the vmkernel port settings for the vMotion network
- D. Configure the DRS Migration Threshold to the most conservative setting

Correct Answer: B

QUESTION 2

A vSphere administrator needs to place an ESXi host in maintenance mode to replace a hardware component. This host is a member of a Virtual SAN cluster that uses Automatic Mode Disk Groups. Availability of virtual machines running on this host is critical. HA and DRS are enabled on the Virtual SAN Cluster. Otherwise, the Virtual SAN cluster uses default values.

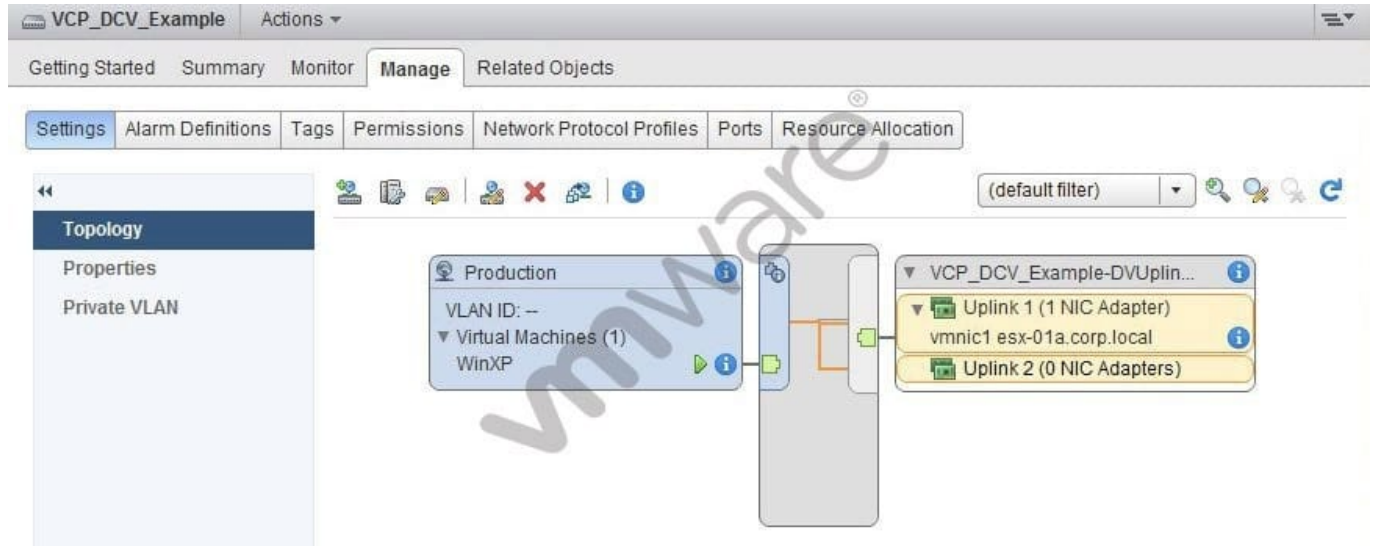
Which action should the administrator take to automatically guarantee availability of virtual machines with the fastest migration time?

- A. Select Enter Maintenance Mode and accept the default values
- B. Select Enter Maintenance Mode and select Full Data Migration option
- C. Select Enter Maintenance Mode and select No Data Migration option
- D. Migrate the virtual machines to another host and datastore then select Enter Maintenance Mode

Correct Answer: A

QUESTION 3

-- Exhibit -



-- Exhibit -Users accessing the WinXP virtual machine shown in the exhibit report intermittent connectivity to the corporate network.

The configuration is as follows:

This virtual machine runs in a DRS/HA cluster of two ESXi hosts.

The VCP_DCV_Example vSphere Distributed Switch was recently created.

The WinXP virtual machine was recently migrated from another vSphere Distributed Switch.

The WinXP virtual machine was able to connect prior to migration to this switch.

No changes to the VCP_DCV_Example switch have been made since creation.

Which step should the administrator take to resolve the WinXP virtual machine's intermittent connectivity to the corporate network?

- A. Add the ESXi host to the switch where the virtual machine is currently running
- B. Disable Port Blocking on the VCP_DCV_Example switch
- C. Disable Port Blocking on the Production port group
- D. Enable Network I/O Control on the switch to better balance I/O

Correct Answer: A

QUESTION 4

A user has submitted a trouble ticket complaining that the email server VM has become very sluggish. After looking at the logs, the vSphere administrator suspects the iSCSI network is experiencing congestion. What esxtop statistic should the administrator examine in order to validate that the guest OS is experiencing performance degradation?

- A. GAVG/wr
- B. %ACTV
- C. PATH
- D. PKTRXMUL/s

Correct Answer: A

QUESTION 5

An administrator needs to manage a virtual machine that cannot be accessed directly from an external network. Which solution should the administrator choose?

- A. Power off the virtual machine and use the vSphere Web Client to open a console to the virtual machine.
- B. Install the Client Integration Plug-in in the Web browser and open a console to the running virtual machine.
- C. Install the DCUI plug-in in the Web browser and open a console to the running virtual machine.
- D. Power off the virtual machine, install the Client Integration plug-in, and open a console to the virtual machine.

Correct Answer: B

[Latest VCP-550 Dumps](#)

[VCP-550 PDF Dumps](#)

[VCP-550 Study Guide](#)