

# VCP550<sup>Q&As</sup>

VMware Certified Professional - Data Center Virtualization

## Pass VMware VCP550 Exam with 100% Guarantee

Free Download Real Questions & Answers **PDF** and **VCE** file from:

<https://www.pass2lead.com/vcp550.html>

100% Passing Guarantee  
100% Money Back Assurance

Following Questions and Answers are all new published by VMware  
Official Exam Center

- ⚙️ **Instant Download** After Purchase
- ⚙️ **100% Money Back** Guarantee
- ⚙️ **365 Days** Free Update
- ⚙️ **800,000+** Satisfied Customers



**QUESTION 1**

How is changed block tracking (CBT) used in a vSphere implementation?

- A. CBT is used by the VMkernel to reduce time needed for virtual machine copy operations.
- B. CBT is used by VMware Data Protection (VDP) to reduce time needed for backup jobs.
- C. CBT is used by vCenter Server to reduce the size of snapshots.
- D. CBT is used by vSphere Replication for synchronous replication operations.

Correct Answer: B

---

**QUESTION 2**

An application team is implementing a new solution in the virtualized environment. The application vendor states the application is memory intensive. The application is very unstable when operating without adequate on-demand access to physical memory. The application's virtual machines are assigned to the Mission Critical resource pool.

Which resource pool setting will help ensure the application has adequate access to memory?

- A. Memory reservation
- B. High memory share value
- C. Unlimited memory
- D. Expandable reservation

Correct Answer: A

---

**QUESTION 3**

An administrator is deploying a virtual machine from a template.

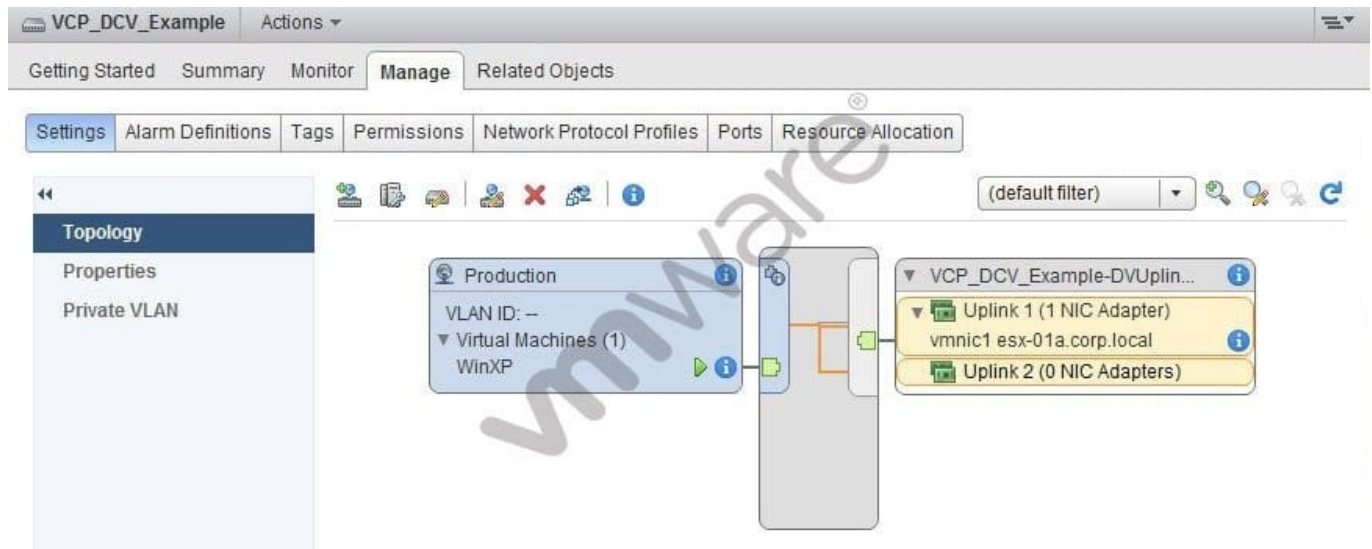
Assuming all of the inventory objects below exist in the implementation, what is the highest level in the vCenter Server hierarchy to which a virtual machine can be deployed?

- A. Datacenter
- B. Cluster
- C. Resource Pool
- D. Host

Correct Answer: B

**QUESTION 4**

-- Exhibit -



-- Exhibit -Users accessing the WinXP virtual machine shown in the exhibit report intermittent connectivity to the corporate network.

The configuration is as follows:

This virtual machine runs in a DRS/HA cluster of two ESXi hosts.

The VCP\_DCV\_Example vSphere Distributed Switch was recently created.

The WinXP virtual machine was recently migrated from another vSphere Distributed Switch.

The WinXP virtual machine was able to connect prior to migration to this switch.

No changes to the VCP\_DCV\_Example switch have been made since creation.

Which step should the administrator take to resolve the WinXP virtual machine's intermittent connectivity to the corporate network?

- A. Add the ESXi host to the switch where the virtual machine is currently running
- B. Disable Port Blocking on the VCP\_DCV\_Example switch
- C. Disable Port Blocking on the Production port group
- D. Enable Network I/O Control on the switch to better balance I/O

Correct Answer: A

**QUESTION 5**

A vSphere administrator needs to add a CPU to a virtual machine, but upon editing the VM settings the option is grayed out. What would explain this behavior?

- A. The virtual machine is running
- B. The virtual machine has been configured with a CPU limit
- C. CPU Hot-add has not been enabled on the virtual machine
- D. The virtual machine is in a resource pool with no available CPU resources

Correct Answer: AC

[VCP550 PDF Dumps](#)

[VCP550 Practice Test](#)

[VCP550 Study Guide](#)