

ASCP-MLT^{Q&As}

MEDICAL LABORATORY TECHNICIAN - MLT(ASCP)

Pass ASCP ASCP-MLT Exam with 100% Guarantee

Free Download Real Questions & Answers **PDF** and **VCE** file from:

<https://www.pass2lead.com/ascp-mlt.html>

100% Passing Guarantee
100% Money Back Assurance

Following Questions and Answers are all new published by ASCP
Official Exam Center

- ⚙️ **Instant Download** After Purchase
- ⚙️ **100% Money Back** Guarantee
- ⚙️ **365 Days** Free Update
- ⚙️ **800,000+** Satisfied Customers



QUESTION 1

Refrigerated temperatures, those close to 4 °C, are recommended for the preservation of enzyme activity in a patient sample.

Chemistry

The recommended storage temperature for the preservation of activity for MOST enzymes is:

- A. 0 °C
- B. 4 °C
- C. 25 °C
- D. 37 °C

Correct Answer: B

QUESTION 2

Hemoglobin F has a high affinity for oxygen. When Hb F is elevated, cells containing Hb S are more oxygenated and do not sickle as readily as they would if Hb F were not present or present in small quantities. Which hemoglobin, when elevated, acts as a protection against sickling in patients with HbS?

- A. Hemoglobin A2
- B. Hemoglobin C
- C. Hemoglobin F
- D. Hemoglobin G

Correct Answer: B

QUESTION 3

A laboratory scientist is preparing a chemical reagent for testing and accidentally spills the chemical on the counter. How is this contamination taken care of?

- A. The laboratory scientist must consult with their supervisor on the proper way to clean the spill.
- B. The laboratory scientist can ask a co-worker to assist in the cleanup of the spill.
- C. The laboratory scientist can just wipe the spill with saline and throw the towel in the garbage.
- D. The laboratory scientist needs to consult with the safety data sheets (SDSs).

Correct Answer: D

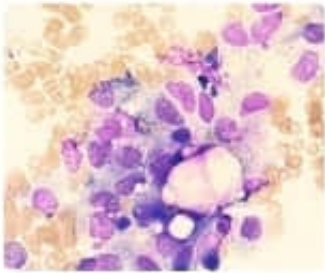
QUESTION 4

- A. 3.79 liters
- B. 1 liter
- C. 2.5 liters
- D. 4.2 liters

Correct Answer: A

QUESTION 5

Identify the following cell types by matching them with their respective image.



- A. Stromal Cells
- B. Osteoblast
- C. Macrophage with hemophagocytosis
- D. Megakaryocyte
- E. Osteoclast

Correct Answer: A

[ASCP-MLT PDF Dumps](#)

[ASCP-MLT VCE Dumps](#)

[ASCP-MLT Study Guide](#)