



AZ-103^{Q&As}

Microsoft Azure Administrator

Pass Microsoft AZ-103 Exam with 100% Guarantee

Free Download Real Questions & Answers **PDF** and **VCE** file from:

<https://www.pass4lead.com/az-103.html>

100% Passing Guarantee
100% Money Back Assurance

Following Questions and Answers are all new published by Microsoft
Official Exam Center

-  **Instant Download** After Purchase
-  **100% Money Back** Guarantee
-  **365 Days** Free Update
-  **800,000+** Satisfied Customers





QUESTION 1

You have five Azure virtual machines that run Windows Server 2016. The virtual machines are configured as web servers.

You have an Azure load balancer named LB1 that provides load balancing services for the virtual machines.

You need to ensure that visitors are serviced by the same web server for each request.

What should you configure?

- A. Protocol to UDP
- B. Session persistence to None
- C. Session persistence to Client IP
- D. Idle Time-out (minutes) to 20

Correct Answer: C

You can set the sticky session in load balancer rules with setting the session persistence as the client IP.

References: <https://cloudopszone.com/configure-azure-load-balancer-for-sticky-sessions/>

QUESTION 2

Your network contains an Active Directory domain named contoso.com that is synced to an Azure Active Directory (Azure AD) tenant named contoso.onmicrosoft.com. The tenant contains only default domain names. The domain contains the users shown in the following table.

Name	Distinguished name
User1	CN=User1, DC=Contoso, DC=com
User2	CN=User2, DC=Contoso, DC=com
User3	CN=User3, DC=Contoso, DC=com

The users have value sets for their user account as shown in the following table.

Name	Telephone number	Home phone	Mobile phone
User1	222-555-1234	222-555-1235	222-555-2222
User2	null	null	null
User3	222-555-1234	222-555-1236	222-555-2223

You plan to enable Azure Multi-Factor Authentication (MFA) by using the following bulk update file named File1.



Username, MFA Status

CN=User1,DC=Contoso,DC=onmicrosoft,DC=com, Enabled

User2@Contoso.com, Enabled

User3@Contoso.com, Enabled

For each of the following statements, select Yes if the statement is true. Otherwise, select No.

NOTE: Each correct selection is worth one point.

Hot Area:

Answer Area

Statements	Yes	No
To successfully enable Azure MFA for User1, you must change the second line of File1 to:User1@contoso.com, Enabled	<input type="radio"/>	<input type="radio"/>
To successfully enable Azure MFA for User2, you must add a mobile phone number to the user account of User2.	<input type="radio"/>	<input type="radio"/>
To successfully enable Azure MFA for User3, you must change the fourth line of File1 to:User3@contoso.onmicrosoft.com, Enabled	<input type="radio"/>	<input type="radio"/>

Correct Answer:

Answer Area

Statements	Yes	No
To successfully enable Azure MFA for User1, you must change the second line of File1 to:User1@contoso.com, Enabled	<input checked="" type="radio"/>	<input type="radio"/>
To successfully enable Azure MFA for User2, you must add a mobile phone number to the user account of User2.	<input checked="" type="radio"/>	<input type="radio"/>
To successfully enable Azure MFA for User3, you must change the fourth line of File1 to:User3@contoso.onmicrosoft.com, Enabled	<input type="radio"/>	<input checked="" type="radio"/>

Box 1: Yes

Box 2: Yes



Phone number is required for MFA.

Box 3: No

Phone number for User3 is already available.

Reference:

<https://docs.microsoft.com/en-us/office365/admin/security-and-compliance/set-up-multi-factor-authentication>

QUESTION 3

SIMULATION

Please wait while the virtual machine loads. Once loaded, you may proceed to the lab section. This may take a few minutes, and the wait time will not be deducted from your overall test time.

When the Next button is available, click it to access the lab section. In this section, you will perform a set of tasks in a live environment. While most functionality will be available to you as it would be in a live environment, some functionality

(e.g, copy and paste, ability to navigate to external websites) will not be possible by design.

Scoring is based on the outcome of performing the tasks stated in the lab. In other words, it doesn't matter how you accomplish the task, if you successfully perform it, you will earn credit for that task.

Labs are not timed separately, and this exam may have more than one lab that you must complete. You can use as much time as you would like to complete each lab. But, you should manage your time appropriately to ensure that you are

able to complete the lab(s) and all other sections of the exam in the time provided.

Please note that once you submit your work by clicking the Next button within a lab, you will NOT be able to return to the lab.

You may now click next to proceed to the lab.

Use the following login credentials as needed:

Azure Username: XXXXXXXX

Azure Password: XXXXXXXX The following information is for technical support purposes only: Lab Instance: 9172796



Task 5

You plan to configure VM1 to be accessible from the Internet.

You need to add a public IP address to the network interface used by VM1.

What should you do from the Azure portal?

A. See solution below

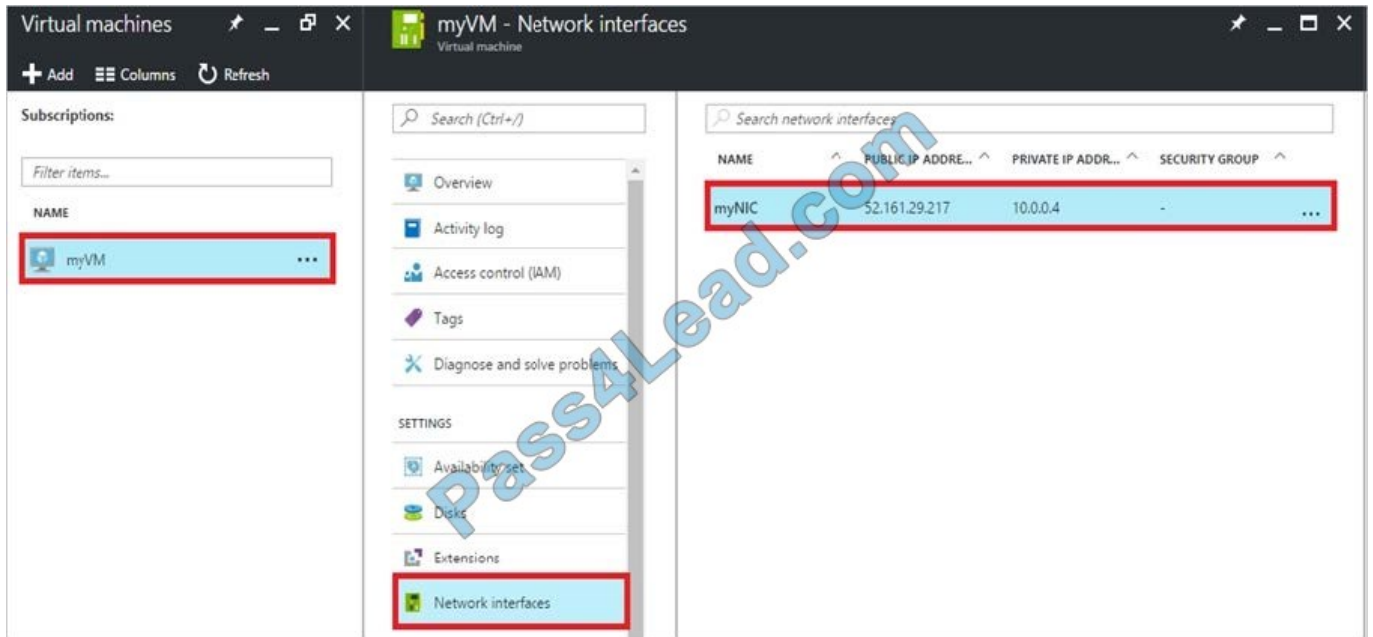
Correct Answer: A

You can add private and public IP addresses to an Azure network interface by completing the steps that follow.

Step 1: In Azure portal, click More services > type virtual machines in the filter box, and then click Virtual machines.

Step 2: In the Virtual machines pane, click the VM you want to add IP addresses to. Click Network interfaces in the virtual machine pane that appears, and then select the network interface you want to add the IP addresses to. In the example

shown in the following picture, the NIC named myNIC from the VM named myVM is selected:



Step 3: In the pane that appears for the NIC you selected, click IP configurations.



Create public IP address

* Name
myPublicIp3 ✓

* IP address assignment
Dynamic **Static**

* Idle timeout (minutes) ⓘ
4

DNS name label ⓘ
[Empty]

.westcentralus.cloudapp.azure.com

* Subscription
[Subscription name] ▼

* Resource group ⓘ
 Create new Use existing
myResourceGroup ▼

* Location
West Central US ▼

Pin to dashboard

Create Automation options

Step 4: Click Create public IP address.

Step 5: In the Create public IP address pane that appears, enter a Name, select an IP address assignment type, a Subscription, a Resource group, and a Location, then click Create, as shown in the following picture:

References: <https://docs.microsoft.com/en-us/azure/virtual-network/virtual-network-multiple-ip-addresses-portal>

**QUESTION 4****SIMULATION**

Please wait while the virtual machine loads. Once loaded, you may proceed to the lab section. This may take a few minutes, and the wait time will not be deducted from your overall test time.

When the Next button is available, click it to access the lab section. In this section, you will perform a set of tasks in a live environment. While most functionality will be available to you as it would be in a live environment, some functionality

(e.g, copy and paste, ability to navigate to external websites) will not be possible by design.

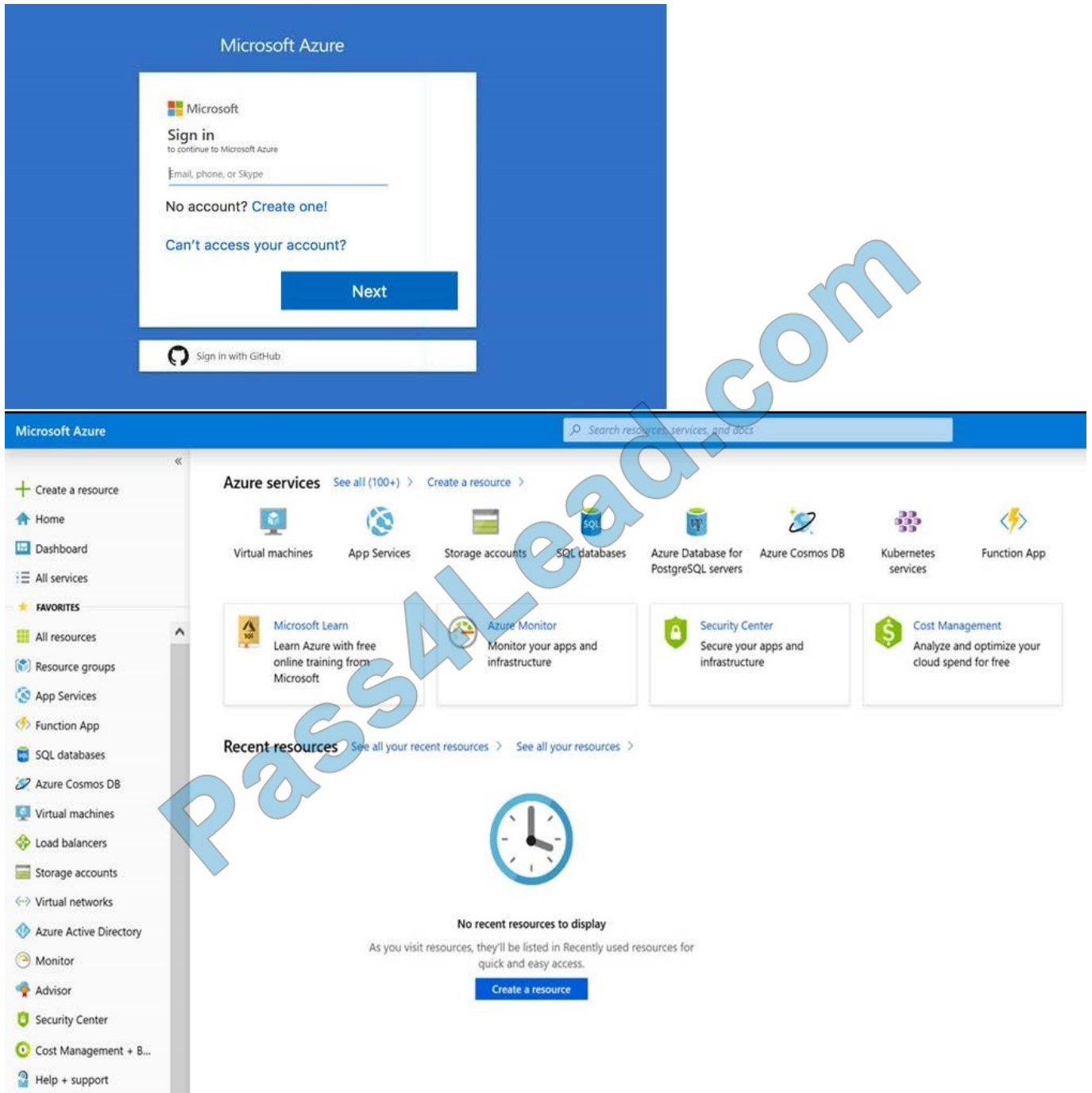
Scoring is based on the outcome of performing the tasks stated in the lab. In other words, it doesn't matter how you accomplish the task, if you successfully perform it, you will earn credit for that task.

Labs are not timed separately, and this exam may have more than one lab that you must complete. You can use as much time as you would like to complete each lab. But, you should manage your time appropriately to ensure that you are

able to complete the lab(s) and all other sections of the exam in the time provided.

Please note that once you submit your work by clicking the Next button within a lab, you will NOT be able to return to the lab.

You may now click next to proceed to the lab.



Task 1

You plan to migrate a large amount of corporate data to Azure Storage and to back up files stored on old hardware to Azure Storage.

You need to create a storage account named `corpdata9172795n1` in the `corpdata1od9172795` resource group. The solution must meet the following requirements:

`Corpdata9172795n1` must be able to host the virtual disk files for Azure virtual machines.

The cost of accessing the files must be minimized.

Replication costs must be minimized.



What should you do from the Azure portal?

A. See solution below.

Correct Answer: A

Step 1: In the Azure portal, click All services. In the list of resources, type Storage Accounts. As you begin typing, the list filters based on your input. Select Storage Accounts.

Step 2: On the Storage Accounts window that appears, choose Add.

Step 3: Select the subscription in which to create the storage account.

Step 4: Under the Resource group field, select corpdatalod9172795.



Home > Create storage account

Create storage account

Basics **Advanced** Tags Review + create

Azure Storage is a Microsoft-managed service providing cloud storage that is highly available, secure, durable, scalable, and redundant. Azure Storage includes Azure Blobs (objects), Azure Data Lake Storage Gen2, Azure Files, Azure Queues, and Azure Tables. The cost of your storage account depends on the usage and the options you choose below. [Learn more](#)

PROJECT DETAILS

Select the subscription to manage deployed resources and costs. Use resource groups like folders to organize and manage all your resources.

* Subscription: <your-subscription>

* Resource group: sample-resource-group
[Create new](#)

INSTANCE DETAILS

The default deployment model is Resource Manager. You can also use the classic deployment model instead. [Choose classic](#)

* Storage account name: your-storage-account

* Location: West US

Performance: Standard

Account kind: StorageV2 (general purpose v2)

Replication: Locally-redundant storage (LRS)

Access tier (default): Cool Hot

[Review + create](#) [Previous](#) [Next : Advanced >](#)

A resource group is a container that holds related resources for an Azure solution.

* Name: your-resource-group

[OK](#) [Cancel](#)

Step 5: Enter a name for your storage account: corpdata9172795n1

Step 6: For Account kind select: General-purpose v2 accounts (recommended for most scenarios)

General-purpose v2 accounts is recommended for most scenarios. . General-purpose v2 accounts deliver the lowest per-gigabyte capacity prices for Azure Storage, as well as industry-competitive transaction prices.

Step 7: For replication select: Read-access geo-redundant storage (RA-GRS)

Read-access geo-redundant storage (RA-GRS) maximizes availability for your storage account. RA-GRS provides read-only access to the data in the secondary location, in addition to geo-replication across two regions.

**References:**

<https://docs.microsoft.com/en-us/azure/storage/common/storage-quickstart-create-account>

<https://docs.microsoft.com/en-us/azure/storage/common/storage-account-overview>

QUESTION 5

SIMULATION Please wait while the virtual machine loads. Once loaded, you may proceed to the lab section. This may take a few minutes, and the wait time will not be deducted from your overall test time. When the Next button is available, click it to access the lab section. In this section, you will perform a set of tasks in a live environment. While most functionality will be available to you as it would be in a live environment, some functionality

(e.g, copy and paste, ability to navigate to external websites) will not be possible by design.

Scoring is based on the outcome of performing the tasks stated in the lab. In other words, it doesn't matter how you accomplish the task, if you successfully perform it, you will earn credit for that task.

Labs are not timed separately, and this exam may have more than one lab that you must complete. You can use as much time as you would like to complete each lab. But, you should manage your time appropriately to ensure that you are

able to complete the lab(s) and all other sections of the exam in the time provided.

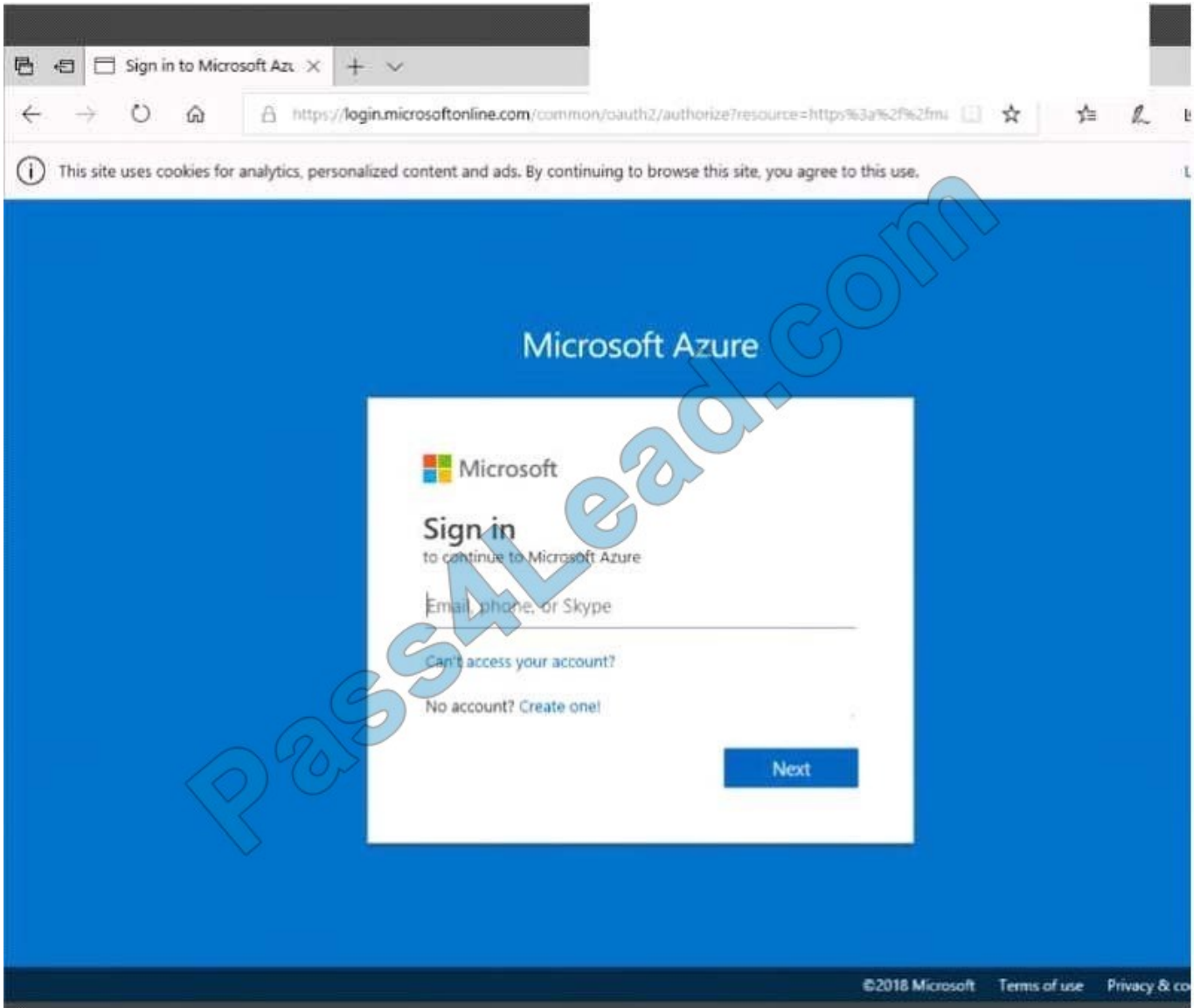
Please note that once you submit your work by clicking the Next button within a lab, you will NOT be able to return to the lab.

You may now click next to proceed to the lab.

Use the following login credentials as needed:

Azure Username: XXXXXXXX

Azure Password: XXXXXXXX The following information is for technical support purposes only: Lab Instance: 9172796



- Instructions
- Comments
- Controls Available
- Keyboard Shortcuts Available

Tasks

Click to expand each objective

- Configure servers
 - Add the "Print and Document Services" role to server LON-SVR1, installing any required management features and enabling both Print and LPD Services.
- + Configure file and share access

Task 3



You plan to protect on-premises virtual machines and Azure virtual machines by using Azure Backup.

You need to prepare the backup infrastructure in Azure. The solution must minimize the cost of storing the backups in Azure.

What should you do from the Azure portal?

A. Answer: See solution below.

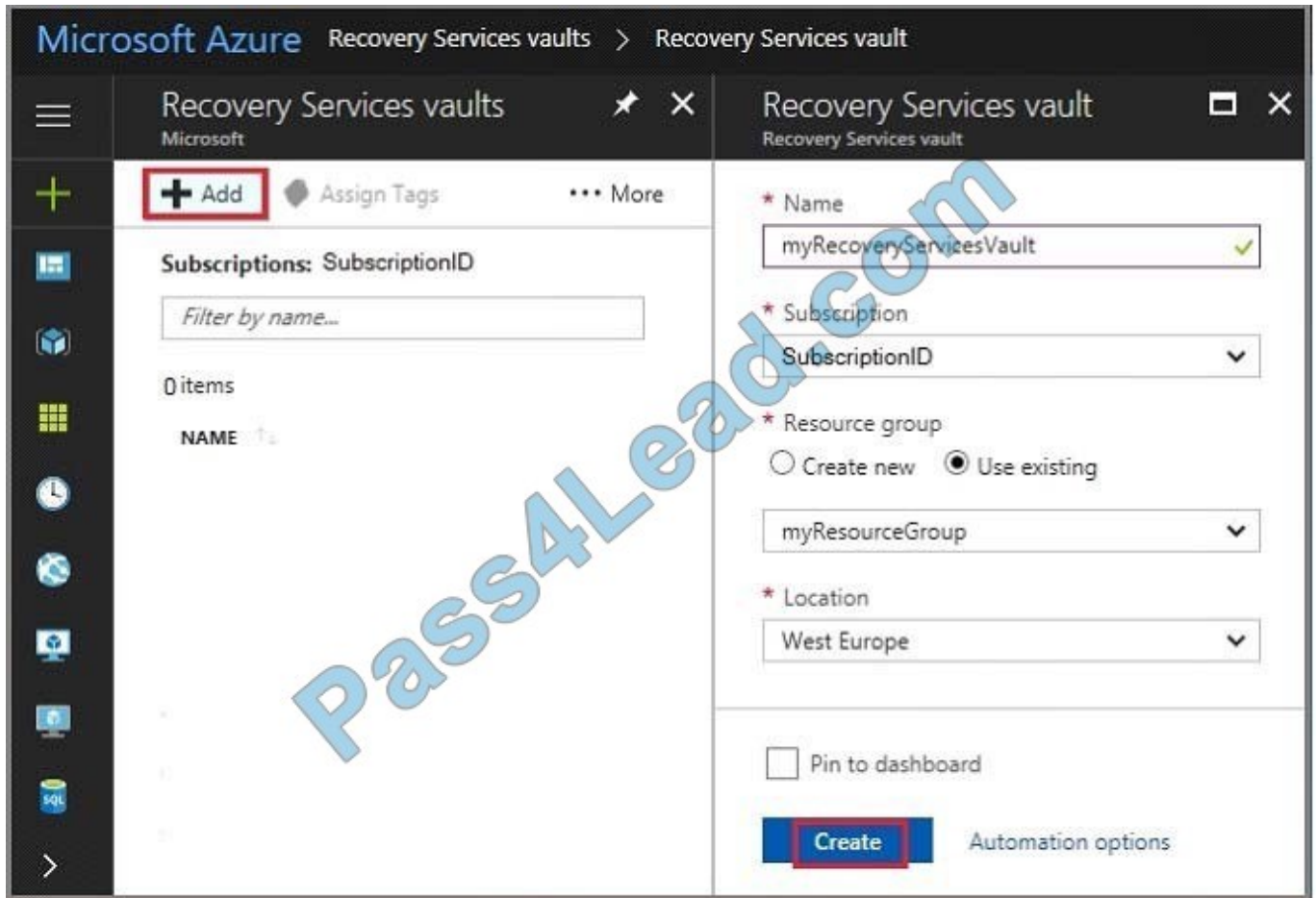
Correct Answer: A

First, create Recovery Services vault.

Step 1: On the left-hand menu, select All services and in the services list, type Recovery Services. As you type, the list of resources filters. When you see Recovery Services vaults in the list, select it to open the Recovery Services vaults menu.



Step 2: In the Recovery Services vaults menu, click Add to open the Recovery Services vault menu.



Step 3: In the Recovery Services vault menu, for example,

Type myRecoveryServicesVault in Name.

The current subscription ID appears in Subscription. If you have additional subscriptions, you could choose another subscription for the new vault.

For Resource group select Use existing and choose myResourceGroup. If myResourceGroup doesn't exist, select Create new and type myResourceGroup.

From the Location drop-down menu, choose West Europe.

Click Create to create your Recovery Services vault.

References: <https://docs.microsoft.com/en-us/azure/backup/tutorial-backup-vm-at-scale>

[AZ-103 VCE Dumps](#)

[AZ-103 Study Guide](#)

[AZ-103 Exam Questions](#)



To Read the [Whole Q&As](#), please purchase the [Complete Version](#) from [Our website](#).

Try our product !

100% Guaranteed Success

100% Money Back Guarantee

365 Days Free Update

Instant Download After Purchase

24x7 Customer Support

Average 99.9% Success Rate

More than 800,000 Satisfied Customers Worldwide

Multi-Platform capabilities - [Windows](#), [Mac](#), [Android](#), [iPhone](#), [iPod](#), [iPad](#), [Kindle](#)

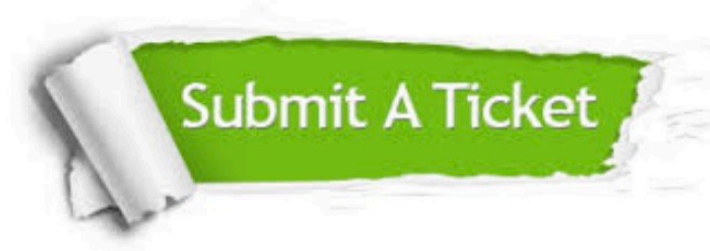
We provide exam PDF and VCE of Cisco, Microsoft, IBM, CompTIA, Oracle and other IT Certifications. You can view Vendor list of All Certification Exams offered:

<https://www.pass4lead.com/allproducts>

Need Help

Please provide as much detail as possible so we can best assist you.

To update a previously submitted ticket:



 <p>One Year Free Update Free update is available within One Year after your purchase. After One Year, you will get 50% discounts for updating. And we are proud to boast a 24/7 efficient Customer Support system via Email.</p>	 <p>Money Back Guarantee To ensure that you are spending on quality products, we provide 100% money back guarantee for 30 days from the date of purchase.</p>	 <p>Security & Privacy We respect customer privacy. We use McAfee's security service to provide you with utmost security for your personal information & peace of mind.</p>
---	---	--

Any charges made through this site will appear as Global Simulators Limited.

All trademarks are the property of their respective owners.

Copyright © pass4lead, All Rights Reserved.