



AZ-103^{Q&As}

Microsoft Azure Administrator

Pass Microsoft AZ-103 Exam with 100% Guarantee

Free Download Real Questions & Answers **PDF** and **VCE** file from:

<https://www.pass4lead.com/az-103.html>

100% Passing Guarantee
100% Money Back Assurance

Following Questions and Answers are all new published by Microsoft
Official Exam Center

-  **Instant Download** After Purchase
-  **100% Money Back** Guarantee
-  **365 Days** Free Update
-  **800,000+** Satisfied Customers





QUESTION 1

You need to implement Role1.

Which command should you run before you create Role1? To answer, select the appropriate options in the answer area.

NOTE: Each correct selection is worth one point.

Hot Area:

Answer Area

	▼	-Name "Reader"		▼
Find-RoleCapability			ConvertFrom-Json	
Get-AzureADDirectoryRole			ConvertFrom-String	
Get-AzureRmRoleAssignment			ConvertTo-Json	
Get-AzureRmRoleDefinition			ConvertTo-Xml	

Correct Answer:

Answer Area

	▼	-Name "Reader"		▼
Find-RoleCapability			ConvertFrom-Json	
Get-AzureADDirectoryRole			ConvertFrom-String	
Get-AzureRmRoleAssignment			ConvertTo-Json	
Get-AzureRmRoleDefinition			ConvertTo-Xml	

QUESTION 2

SIMULATION

Please wait while the virtual machine loads. Once loaded, you may proceed to the lab section. This may take a few minutes, and the wait time will not be deducted from your overall test time.

When the Next button is available, click it to access the lab section. In this section, you will perform a set of tasks in a live environment. While most functionality will be available to you as it would be in a live environment, some functionality

(e.g, copy and paste, ability to navigate to external websites) will not be possible by design.

Scoring is based on the outcome of performing the tasks stated in the lab. In other words, it doesn't matter how you accomplish the task, if you successfully perform it, you will earn credit for that task.

Labs are not timed separately, and this exam may have more than one lab that you must complete. You can use as



much time as you would like to complete each lab. But, you should manage your time appropriately to ensure that you are

able to complete the lab(s) and all other sections of the exam in the time provided.

Please note that once you submit your work by clicking the Next button within a lab, you will NOT be able to return to the lab.

You may now click next to proceed to the lab.

Use the following login credentials as needed:

Azure Username: XXXXXXXX

Azure Password: XXXXXXXX

The following information is for technical support purposes only:

Lab Instance: 9172796



Task 3

You plan to protect on-premises virtual machines and Azure virtual machines by using Azure Backup.

You need to prepare the backup infrastructure in Azure. The solution must minimize the cost of storing the backups in Azure.

What should you do from the Azure portal?

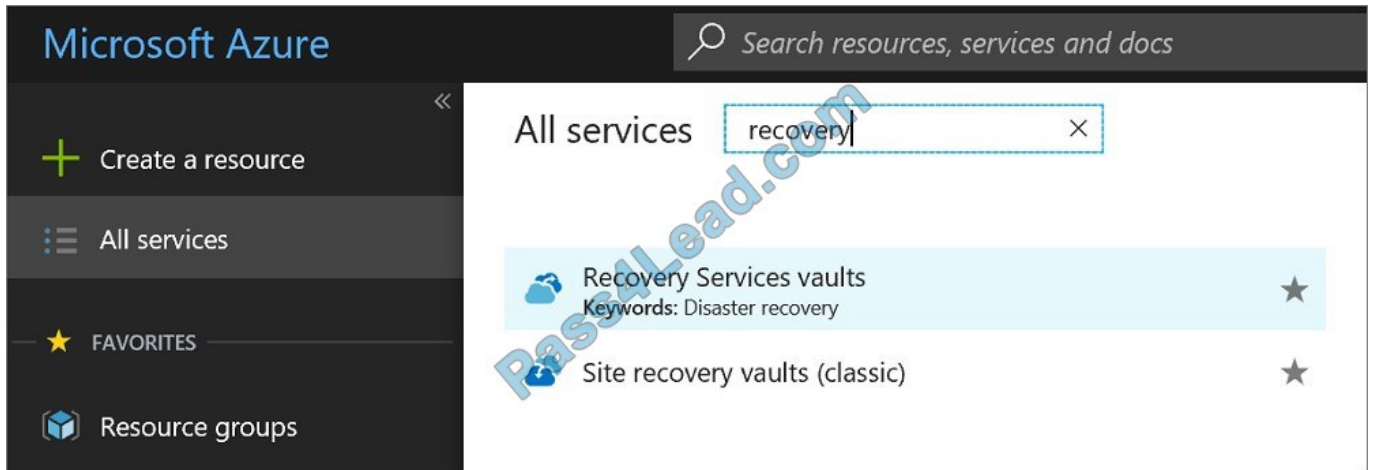
A. See solution below.



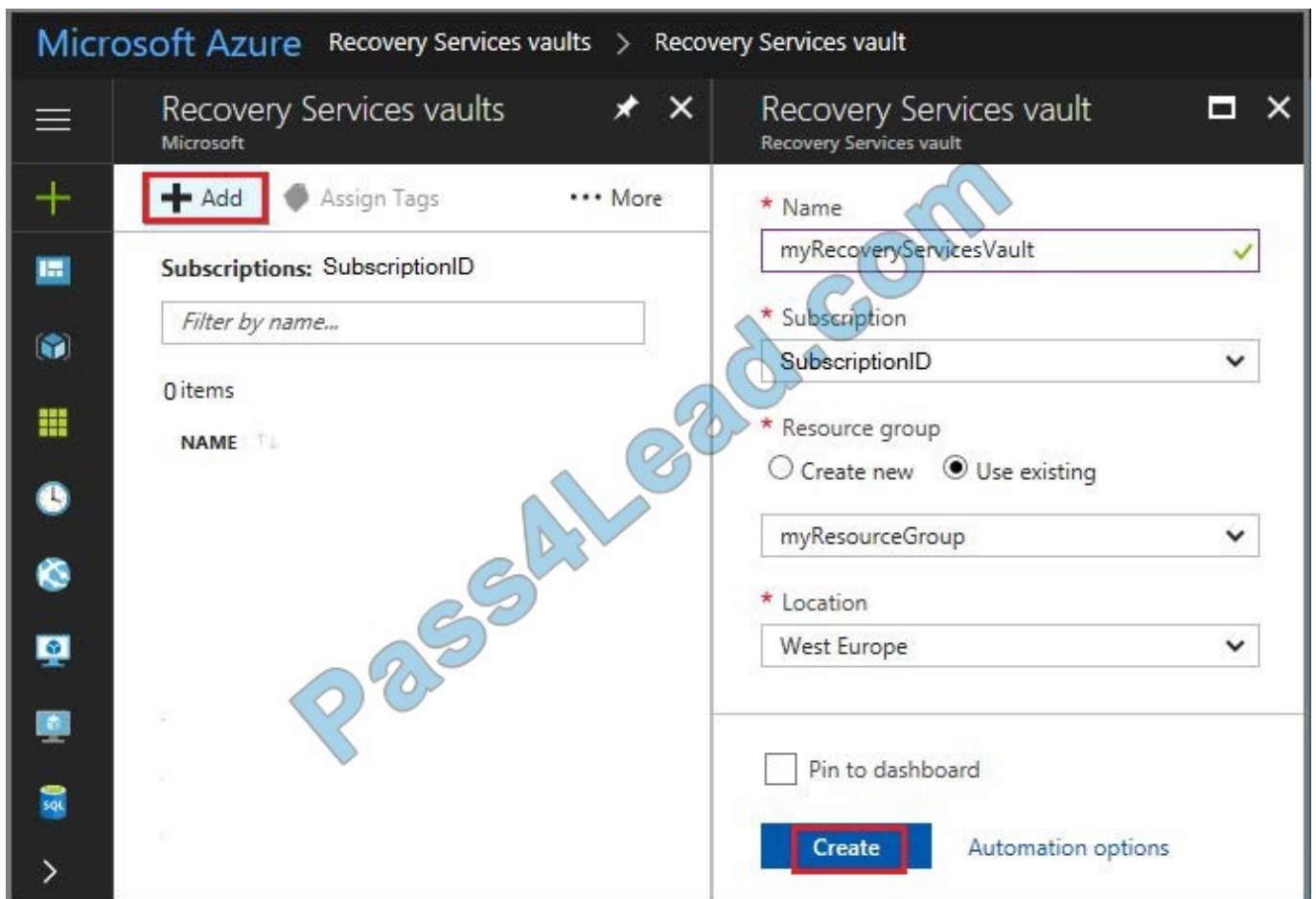
Correct Answer: A

First, create Recovery Services vault.

Step 1: On the left-hand menu, select All services and in the services list, type Recovery Services. As you type, the list of resources filters. When you see Recovery Services vaults in the list, select it to open the Recovery Services vaults menu.



Step 2: In the Recovery Services vaults menu, click Add to open the Recovery Services vault menu.





Step 3: In the Recovery Services vault menu, for example,

Type myRecoveryServicesVault in Name.

The current subscription ID appears in Subscription. If you have additional subscriptions, you could choose another subscription for the new vault.

For Resource group select Use existing and choose myResourceGroup. If myResourceGroup doesn't exist, select Create new and type myResourceGroup.

From the Location drop-down menu, choose West Europe.

Click Create to create your Recovery Services vault.

References:

<https://docs.microsoft.com/en-us/azure/backup/tutorial-backup-vm-at-scale>

QUESTION 3

You have an Azure App Service plan that hosts an Azure App Service named App1. You configure one production slot and four staging slots for App1. You need to allocate 10 percent of the traffic to each staging slot and 60 percent of the traffic to the production slot.

What should you add to App1?

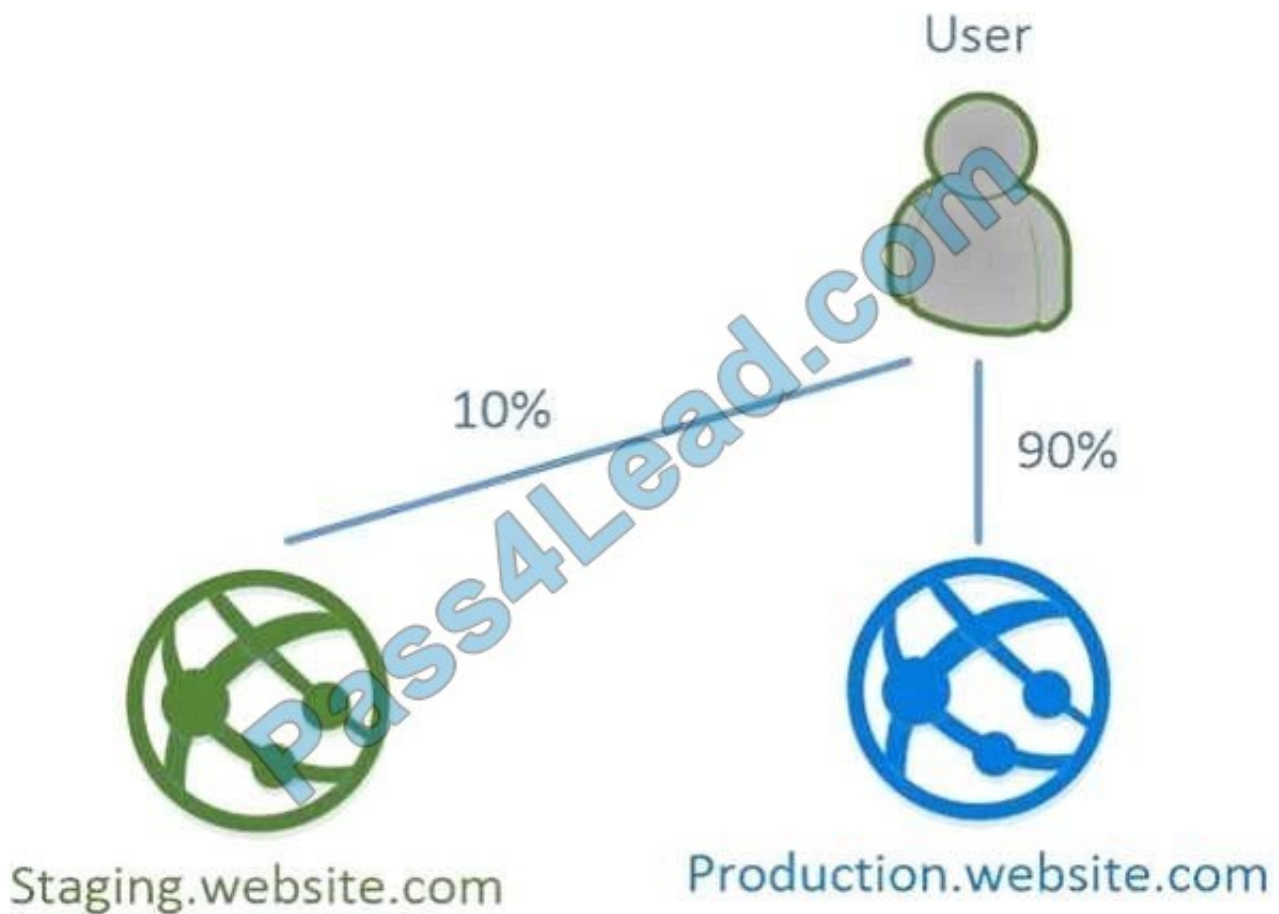
- A. slots to the Testing in production blade
- B. a performance test
- C. a WebJob
- D. templates to the Automation script blade

Correct Answer: A

Besides swapping, deployment slots offer another killer feature: testing in production. Just like the name suggests, using this, you can actually test in production. This means that you can route a specific percentage of user traffic to one or

more of your deployment slots.

Example:



References: <https://stackify.com/azure-deployment-slots/>

QUESTION 4

Note: This question is part of a series of questions that present the same scenario. Each question in the series contains a unique solution that might meet the stated goals. Some question sets might have more than one correct solution, while

others might not have a correct solution.

After you answer a question in this section, you will NOT be able to return to it. As a result, these questions will not appear in the review screen.

You have an Azure subscription that contains the following resources:

1.

A virtual network that has a subnet named Subnet1

2.

Two network security groups (NSGs) named NSG-VM1 and NSG-Subnet1



3.

A virtual machine named VM1 that has the required Windows Server configurations to allow Remote Desktop connections

NSG-Subnet1 has the default inbound security rules only.

NSG-VM1 has the default inbound security rules and the following custom inbound security rule:

1.

Priority: 100

2.

Source: Any

3.

Source port range: *

4.

Destination: *

5.

Destination port range: 3389

6.

Protocol: UDP

7.

Action: Allow

VM1 connects to Subnet1. NSG1-VM1 is associated to the network interface of VM1. NSG-Subnet1 is associated to Subnet1.

You need to be able to establish Remote Desktop connections from the internet to VM1.

Solution: You add an inbound security rule to NSG-Subnet1 that allows connections from the Any source to the * destination for port range 3389 and uses the TCP protocol. You remove NSG-VM1 from the network interface of VM1.

Does this meet the goal?

A. Yes

B. No

Correct Answer: B

The default port for RDP is TCP port 3389. A rule to permit RDP traffic must be created automatically when you create your VM.

Note on NSG-Subnet1: Azure routes network traffic between all subnets in a virtual network, by default.



References:

<https://docs.microsoft.com/en-us/azure/virtual-machines/troubleshooting/troubleshoot-rdp-connection>

QUESTION 5

You have a computer named Computer1 that has a point-to-site VPN connection to an Azure virtual network named VNet1. The point-to-site connection uses a self-signed certificate. From Azure, you download and install the VPN client configuration package on a computer named Computer2.

You need to ensure that you can establish a point-to-site VPN connection to VNet1 from Computer2. Solution: You join Computer2 to Azure Active Directory (Azure AD).

Does this meet this goal?

A. Yes

B. No

Correct Answer: B

[AZ-103 VCE Dumps](#)

[AZ-103 Practice Test](#)

[AZ-103 Braindumps](#)



To Read the [Whole Q&As](#), please purchase the [Complete Version](#) from [Our website](#).

Try our product !

100% Guaranteed Success

100% Money Back Guarantee

365 Days Free Update

Instant Download After Purchase

24x7 Customer Support

Average 99.9% Success Rate

More than 800,000 Satisfied Customers Worldwide

Multi-Platform capabilities - [Windows](#), [Mac](#), [Android](#), [iPhone](#), [iPod](#), [iPad](#), [Kindle](#)

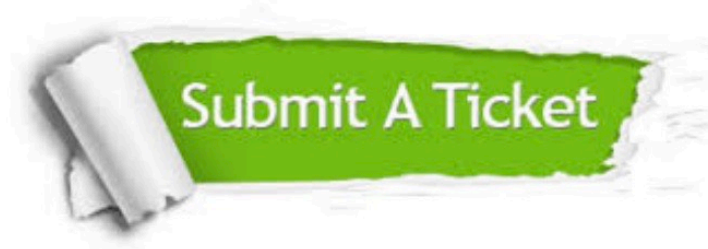
We provide exam PDF and VCE of Cisco, Microsoft, IBM, CompTIA, Oracle and other IT Certifications. You can view Vendor list of All Certification Exams offered:

<https://www.pass4lead.com/allproducts>

Need Help

Please provide as much detail as possible so we can best assist you.

To update a previously submitted ticket:



 <p>One Year Free Update Free update is available within One Year after your purchase. After One Year, you will get 50% discounts for updating. And we are proud to boast a 24/7 efficient Customer Support system via Email.</p>	 <p>Money Back Guarantee To ensure that you are spending on quality products, we provide 100% money back guarantee for 30 days from the date of purchase.</p>	 <p>Security & Privacy We respect customer privacy. We use McAfee's security service to provide you with utmost security for your personal information & peace of mind.</p>
---	---	--

Any charges made through this site will appear as Global Simulators Limited.

All trademarks are the property of their respective owners.

Copyright © pass4lead, All Rights Reserved.